



NUMBER: 23-034-14 REV. A

GROUP: Body

DATE: December 16, 2014

This bulletin is supplied as technical information only and is not an authorization for repair. No part of this publication may be reproduced, stored in a retrieval system, or transmitted, in any form or by any means, electronic, mechanical, photocopying, or otherwise, without written permission of Chrysler Group LLC.

THIS BULLETIN SUPERSEDES SERVICE BULLETIN 23-034-14, DATED NOVEMBER 08, 2014, WHICH SHOULD BE REMOVED FROM YOUR FILES. ALL REVISIONS ARE HIGHLIGHTED WITH **ASTERISKS**** AND INCLUDE STUD CLIP PART NUMBER.**

SUBJECT:

Cowl Trim Panel Fastener Water Leak

OVERVIEW:

This bulletin involves modifying or replacing the cowl trim panel fasteners to correct a water leak condition.

MODELS:

2007 - 2014 (JK) Jeep Wrangler

SYMPTOM/CONDITION:

The customer may describe a water accumulation condition on the vehicle floor front foot well area.

DIAGNOSIS:

If the customer describes the symptom, perform the Repair Procedure.

PARTS REQUIRED:

Qty.	Part No.	Description
1 (AR)	05019058AA	Tape, Foam
(AR)	**68253175AA**	Clip, Stud
1 (AR)	5VK54DX9AA	COVER, Wiring Protector, Cowl Trim Panel, Right Side (Left Hand Drive)
1 (AR)	5VK55DX9AA	COVER, Wiring Protector, Cowl Trim Panel, Right Side (Right Hand Drive)
1 (AR)	5VK56DX9AA	COVER, Wiring Protector, Cowl Trim Panel, Left Side (Left and Right Hand Drive)

NOTE: Each piece of Foam Tape will service 2 cowl trim panels.

REPAIR PROCEDURE:

1. Determine if water in the front floor foot well is coming from the cowl side trim panel fir tree fasteners. Refer to water leak diagnosis within the detailed service procedures available in DealerCONNECT> TechCONNECT under: Service Info> 23 - Body> Diagnosis and Testing (Fig. 1).
2. Was a water leak coming from the cowl side trim panel fir tree fasteners?
 - a. YES>>> Continue with the Repair Procedure [Step #3](#).
 - b. NO>>> This Bulletin does not apply. Further diagnosis is required.

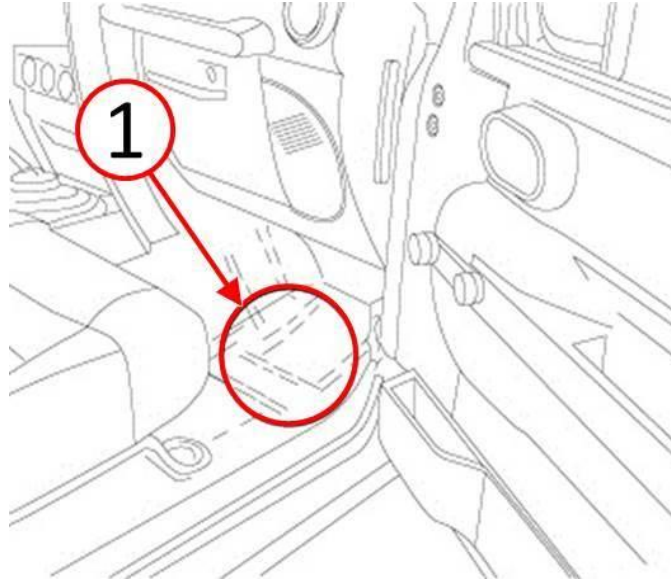


Fig. 1 Water In Foot Well

1 - Foot Well Area

-
3. Remove the cowl trim panel (1) ([Fig. 2](#)). Refer to the detailed service procedures available in DealerCONNECT> TechCONNECT under: Service Info> 23 - Body> Interior> PANEL, Cowl Trim> Removal.
 4. Is the cowl trim panel (1) reusable and are the fir tree fasteners (2) present and in reusable condition ([Fig. 2](#))?
 - a. YES>>> Cowl trim panel and fasteners can be reused. Continue with [Step #5](#).
 - b. NO>>> Cowl trim panel and/or fasteners must be replaced. Proceed to [Step #14](#).



Fig. 2 Remove Cowl Trim Panel

- 1 - Cowl Trim Panel
- 2 - Fir Tree Fasteners With Foam Seal
- 3 - Cowl Trim Panel Fastener Holes

-
5. Obtain one piece of foam tape (3) specified in the Parts Required section of this bulletin ([Fig. 3](#)).
 6. Remove the foam seal (2) from the fir tree fastener (1) ([Fig. 3](#)).
 7. Place the foam seal (2) on the foam tape (3) and cut a piece of the foam tape approximately the same size as the original round foam seal 32 mm (1.25 in.) ([Fig. 3](#)).

NOTE: Created foam piece can be square or round. Shape is not important as long as the overall dimension is approximately the same and not less than the original seal.

8. Pierce a **small** hole (4) through the center of the created foam seal ([Fig. 3](#)).

NOTE: Do not create a large hole. Piercing the hole with a sharp object is the preferred method to create a small hole.

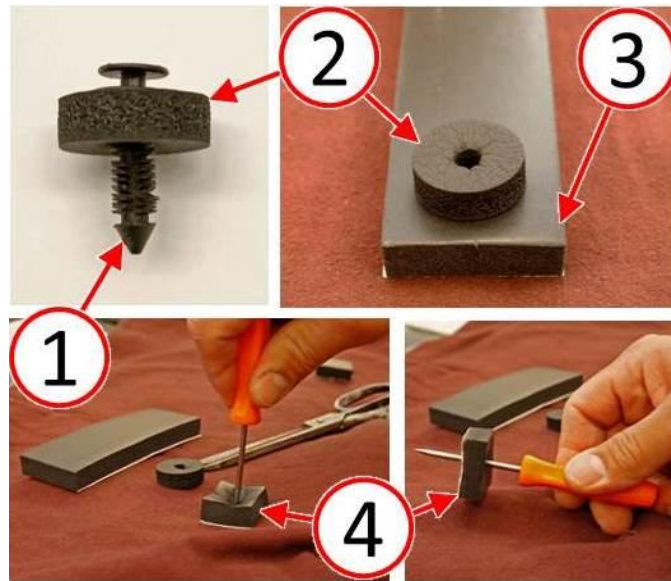


Fig. 3 Create Foam Seal

- 1 - Fir Tree Fastener
- 2 - Original Foam Seal
- 3 - Foam Material
- 4 - Created Foam Seal

9. Install the created foam seal (1) onto the fir tree fastener (2) **with the sticky side facing toward the fir tree fastener head** (Fig. 4).

NOTE: Sticky side of the foam seal MUST face toward the fir tree fastener head. If reversed, it may create a water leak.

10. Install both fir tree fasteners with foam seal (3) onto the cowl trim panel (4) (Fig. 4).

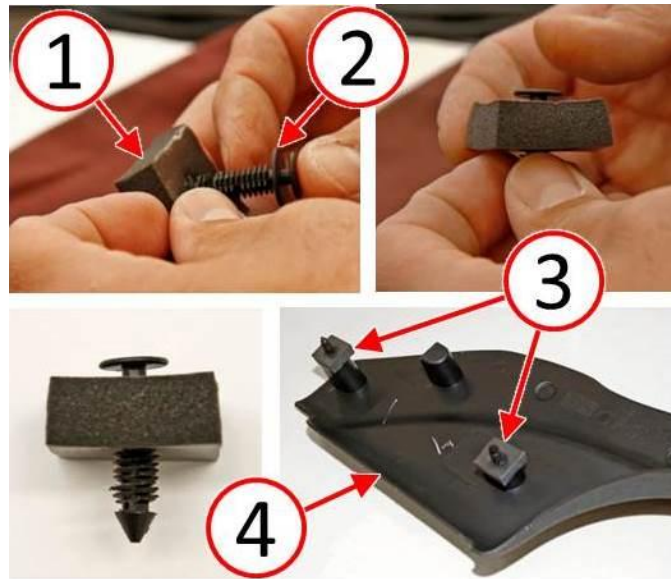


Fig. 4 Install Foam Seal

- 1 - Created Foam Seal
- 2 - Fir Tree Fastener
- 3 - Cowl Trim Panel
- 4 - Fir Tree Fasteners With Foam Seals

-
11. Install the cowl trim panel to the vehicle being very careful to align the fir tree fasteners with the fastener holes in the cowl. Misaligned fir tree fasteners will allow water to leak into the vehicle foot well. Refer to the detailed service procedures available in DealerCONNECT> TechCONNECT under: Service Info> 23 - Body> Interior> PANEL, Cowl Trim> Installation.
 12. Repeat the seal creation process for the opposite side if necessary.
 13. Verify that the water leak from the cowl side trim panel fir tree fasteners has been resolved. This completes the Repair Procedure. Do not perform the remaining steps in this procedure.
 14. Obtain a NEW cowl trim panel wiring protector cover and 2 stud clips per cowl trim panel being replaced, specified in the Parts Required section of this bulletin.
 15. Install the two stud clips (2) into the cowl trim panel fastener holes (1) (Fig. 5).

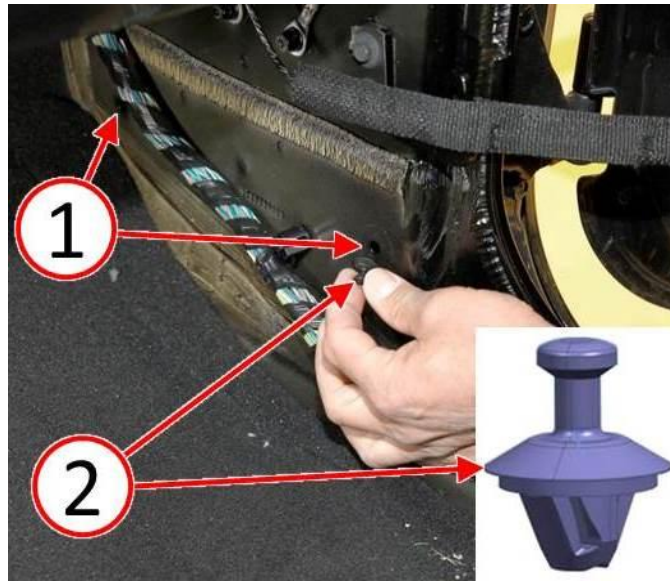


Fig. 5 Install T-Studs

- 1 - Cowl Trim Panel Fastener Holes
- 2 - Stud Clip

16. Install the NEW cowl trim panel (1) to the stud clips (Fig. 6). Refer to the detailed service procedures available in DealerCONNECT> TechCONNECT under: Service Info> 23 - Body> Interior> PANEL, Cowl Trim> Installation.

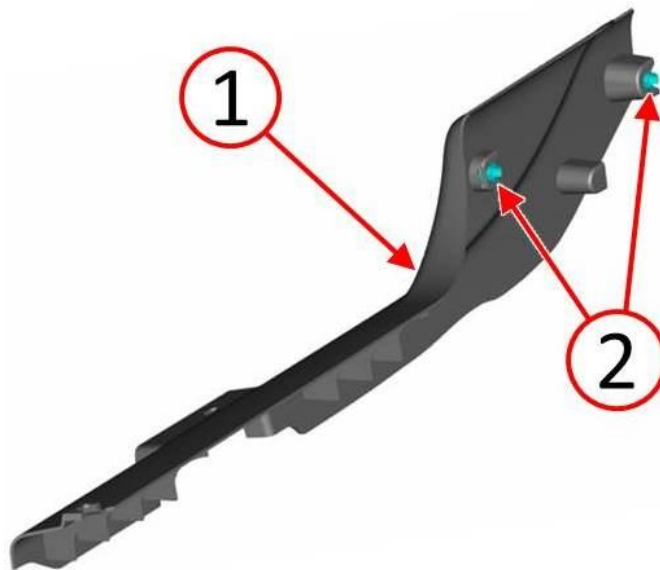


Fig. 6 Install Cowl Trim Panel

- 1 - New Cowl Trim Panel
 - 2 - Cowl Trim Panel Retainers
-

17. Verify that the water leak from the cowl side trim panel has been resolved.

POLICY:

Reimbursable within the provisions of the warranty.

TIME ALLOWANCE:

Labor Operation No:	Description	Skill Category	Amount
23-50-01-9D	Inspect For Source Of Water Leak (1 - Semi-Skilled)	6 - Electrical and Body Systems	0.2 Hrs.
23-50-01-9E	Inspect And Repair Water Leak at Cowl Trim Panel - One Side (1 - Semi-Skilled)	6 - Electrical and Body Systems	0.4 Hrs.
23-50-01-9F	Inspect And Repair Water Leak at Cowl Trim Panel - Both Sides (1 - Semi-Skilled)	6 - Electrical and Body Systems	0.5 Hrs.

FAILURE CODE:

ZZ	Service Action
----	----------------

PART REIMBURSEMENT DETAIL:

Part No:	Description
NPN	1/2 Of Foam Tape

NOTE: This part number is for reimbursement only and will need to be claimed for 1/2 of Dealer Net of Part No. 05019058AA for each cowl trim panel serviced or it will be rejected.