



NUMBER: 23-001-14 REV. A

GROUP: Body

DATE: April 09, 2014

This bulletin is supplied as technical information only and is not an authorization for repair. No part of this publication may be reproduced, stored in a retrieval system, or transmitted, in any form or by any means, electronic, mechanical, photocopying, or otherwise, without written permission of Chrysler Group LLC.

THIS SERVICE BULLETIN IS ALSO BEING RELEASED AS RAPID RESPONSE TRANSMITTAL (RRT) 14-001. ALL APPLICABLE UN-SOLD RRT VIN's HAVE BEEN LOADED. TO VERIFY THAT THIS RRT SERVICE ACTION IS APPLICABLE TO THE UN-SOLD VEHICLE, USE VIP OR PERFORM A VIN SEARCH IN TECHCONNECT. FOR VEHICLES NOT INCLUDED IN THE RRT VIN LIST, APPLICATION OF THIS SERVICE BULLETIN TO SOLD UNITS IS BASED UPON THE CUSTOMER EXPERIENCING THE SYMPTOM/CONDITIONS. ALL REPAIRS ARE REIMBURSABLE WITHIN THE PROVISIONS OF WARRANTY.

THIS BULLETIN SUPERSEDES SERVICE BULLETIN 23-001-14, DATED January 03, 2014, WHICH SHOULD BE REMOVED FROM YOUR FILES. ALL REVISIONS ARE HIGHLIGHTED WITH **ASTERISKS**** AND INCLUDE EXTENSION OF BUILD DATE APPLICABILITY AND PART NUMBER CHANGE.**

SUBJECT:

Wind Noise Left Front Door

OVERVIEW:

This bulletin involves installing foam at the upper rear corner of the left front door window run channel.

MODELS:

2013 - 2014 (JS) Avenger

NOTE: This bulletin applies to vehicles built on or after May 1, 2013 (MDH 0501XX) and on or before **October 31, 2013 (MDH 1031XX)****.**

SYMPTOM/CONDITION:

The customer may note wind noise coming from the left front door.

DIAGNOSIS:

If a customer's VIN is listed in VIP or your RRT VIN list, perform the repair. For all other customers that describe the symptom/condition, perform the Repair Procedure.

PARTS REQUIRED:

Qty.	Part No.	Description
1(AR)	**05019058AA**	Foam Tape

NOTE: One piece of foam tape will service 2 vehicles.

REPAIR PROCEDURE:

1. Lower the left front door window.
2. Remove the window run channel seal from of the upper B-pillar corner of the left front door window run channel (Fig. 1).



Fig. 1 Remove Window Run Channel Seal

1 - Window Run Channel Seal

-
3. Cut the foam piece in half (1). Trim one half of the foam piece (2) to match the contour (3) of the upper window run channel corner (Fig. 2).

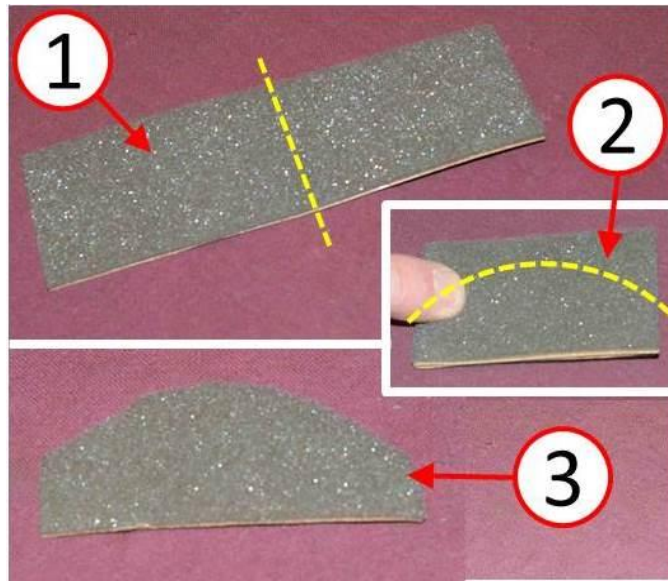


Fig. 2 Cut Foam Piece

- 1 - Full Foam Piece
- 2 - Half Foam Piece
- 3 - Contoured Foam Piece

-
4. Install the contoured foam piece in the upper B-pillar corner of the left front door window run channel. The foam piece curved contoured edge should not extend beyond the area covered by the window run channel seal ([Fig. 3](#)).



Fig. 3 Foam Piece Installed

- 1 - Contoured Foam Piece
-

5. As viewed from the outside of the door, the foam piece should extend beyond the corner by approximately 13 mm (0.5 In.) ([Fig. 4](#)).

NOTE: Do NOT trim or remove this excess foam tape, it will compress upon installation of window run channel seal.

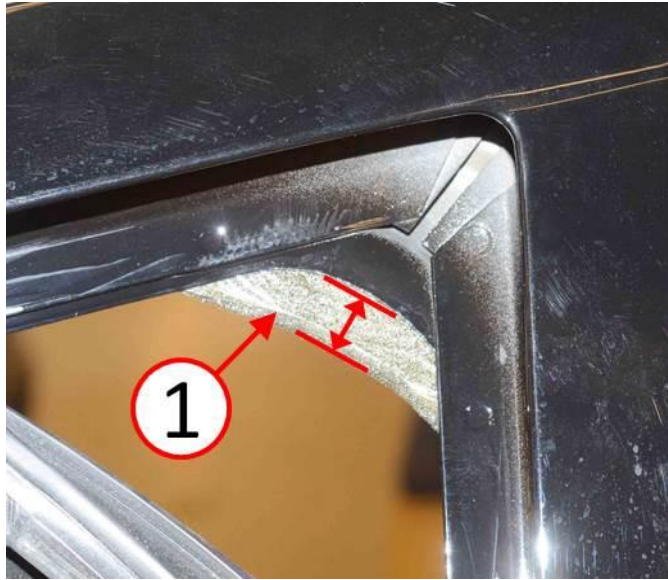


Fig. 4 Foam Piece Overlap

1 - Foam Piece Overhang

6. Reinstall the window run channel seal to the door window run channel ([Fig. 5](#)).



Fig. 5 Install Run Channel Seal

1 - Window Run Channel Seal

7. Ensure the customer's wind noise concern has been resolved.

POLICY:

Reimbursable within the provisions of the warranty.

TIME ALLOWANCE:

Labor Operation No:	Description	Skill Category	Amount
23-33-20-9F	Install Foam Tape To Window Run Channel (1 - Semi-Skilled)	6 - Electrical And Body Systems	0.3 Hrs.

FAILURE CODE:

ZZ	Service Action
----	----------------

PART REIMBURSEMENT DETAIL:

Part No:	Description
NPN	1/2 Of Foam Tape

NOTE: This part number is for reimbursement only and will need to be claimed for 1/2 of Dealer Net of Part No. **05019058AA or it will be rejected.**