



NUMBER: 23-011-14 REV. A

GROUP: Body

DATE: July 22, 2014

This bulletin is supplied as technical information only and is not an authorization for repair. No part of this publication may be reproduced, stored in a retrieval system, or transmitted, in any form or by any means, electronic, mechanical, photocopying, or otherwise, without written permission of Chrysler Group LLC.

THIS BULLETIN SUPERSEDES SERVICE BULLETIN 23-011-14, DATED MAY 16, 2014, WHICH SHOULD BE REMOVED FROM YOUR FILES. ALL REVISIONS ARE HIGHLIGHTED WITH **ASTERISKS**** AND INCLUDE ADDING INSPECTION STEP AND INSPECTION LABOR OPERATION NUMBER.**

THIS SERVICE BULLETIN IS ALSO BEING RELEASED AS RAPID RESPONSE TRANSMITTAL (RRT) 14-041. ALL APPLICABLE SOLD AND UN-SOLD RRT VIN'S HAVE BEEN LOADED. TO VERIFY THAT THIS RRT SERVICE ACTION IS APPLICABLE TO THE VEHICLE, USE VIP OR PERFORM A VIN SEARCH IN TECHCONNECT. ALL REPAIRS ARE REIMBURSABLE WITHIN THE PROVISIONS OF WARRANTY.

SUBJECT:

Left Rear Sliding Door Weatherstrip Seal Sticks Out At Bottom Of C-Pillar Door Opening

OVERVIEW:

This bulletin involves replacing the left rear C-pillar cut line sliding door seal.

MODELS:

2014 RT Caravan / Town & Country

NOTE: This bulletin applies to vehicles built on or after March 5, 2014 (MDH 0305XX) and on or before March 11, 2014 (MDH 0311XX).

SYMPTOM/CONDITION:

Some vehicles may have a left rear sliding door weatherstrip seal that sticks out along the C-pillar side of the door opening as shown in (Fig. 1).

DIAGNOSIS:

If a customer's VIN is listed in VIP or your RRT VIN list, perform the repair. For all other customers that describe the symptom/condition, perform the Repair Procedure.

PARTS REQUIRED:

Qty.	Part No.	Description
1	68078281AC	SEAL, Rear Door, C-Pillar Cut Line, Left

REPAIR PROCEDURE:

1. ****Is the left rear sliding door weatherstrip seal sticking out along the C-pillar side of the door opening as shown in (Fig. 1)?**
 - a. YES >>> Continue with **Step #2**.
 - b. No >>> No further action is required. This bulletin does not apply.**

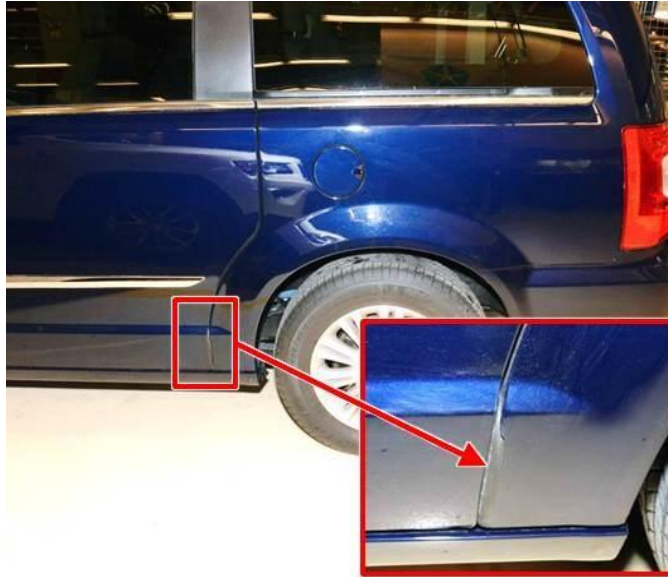


Fig. 1 Symptom Condition Area Of Concern

2. Replace the weatherstrip seal on the left rear sliding door with the seal specified in the **PARTS REQUIRED** section of this bulletin (Fig. 2).

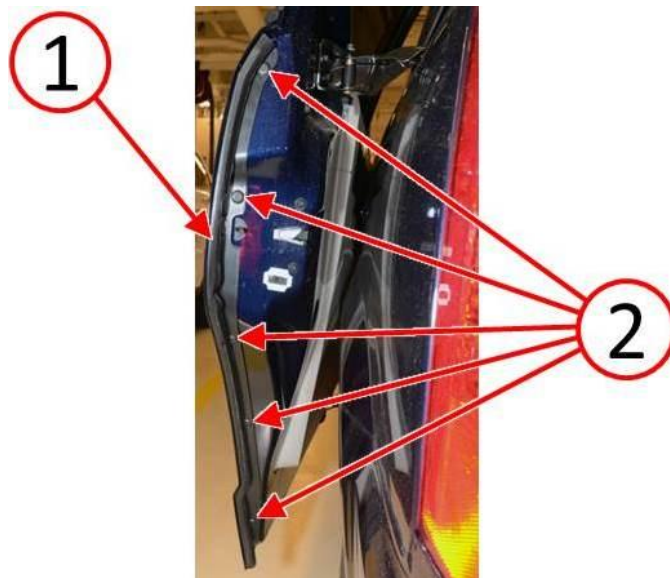


Fig. 2 Door Weatherstrip Seal Replacement

1 - Weatherstrip Seal

2 - Fir-Tree Fasteners

3. Verify that the symptom/condition has been corrected as shown in (Fig. 3).

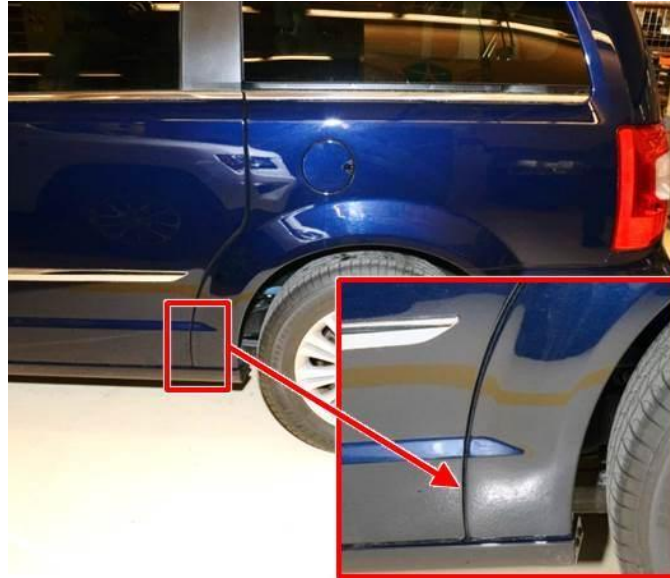


Fig. 3 Symptom Condition Corrected

POLICY:

Reimbursable within the provisions of the warranty.

TIME ALLOWANCE:

Labor Operation No:	Description	Skill Category	Amount
23-51-37-91	**Inspect Weatherstrip/Seal, Sliding Door C-Pillar Cut Line (1 - Semi-Skilled)**	**6 - Electrical and Body Systems**	**0.2 Hrs.**
23-51-37-90	Weatherstrip/Seal, Sliding Door C-Pillar Cut Line - Replace Left Side (1 - Semi-Skilled)	6 - Electrical and Body Systems	0.2 Hrs.

FAILURE CODE:

ZZ	Service Action
----	----------------