

TECHNICAL BULLETIN
LTB00507NAS2
14 MAR 2014



© Jaguar Land Rover North America, LLC

NOTE: The information in Technical Bulletins is intended for use by trained, professional Technicians with the knowledge, tools, and equipment required to do the job properly and safely. It informs these Technicians of conditions that may occur on some vehicles, or provides information that could assist in proper vehicle service. The procedures should not be performed by 'do-it-yourselfers'. If you are not a Retailer, do not assume that a condition described affects your vehicle. Contact an authorized Land Rover service facility to determine whether this bulletin applies to a specific vehicle.

This reissue replaces all previous versions. Please destroy all previous versions. Only refer to the electronic version of this Technical Bulletin in TOPIx.

Changes are highlighted in gray

SECTION: 501-05

Loadspace Cover-To-Tailgate Contact Repair

AFFECTED VEHICLE RANGE:

Range Rover Evoque (LV)

Model Year: 2012-2013

VIN: CH000447-DH856579

MARKETS:

NAS

CONDITION SUMMARY:

Situation: The loadspace cover may contact the tailgate inner trim, resulting in wear to both parts.

Cause: This may be caused when the loadspace cover is held above its design location.

Action: In the event of a customer concern of the above, refer to the Repair Procedure outlined below.

PARTS:



NOTE: Should any of the parts be unavailable, raise a EPQR to request an alternative repair process.

LR046330	Alston loadspace cover	Quantity: 1
LR046932	Decal - RH	Quantity: 1
LR046933	Decal - LH	Quantity: 1
LR046936	Spray paint - Aerosol	Quantity: 1
LR057384	Loadspace cover	Quantity: 1

TOOLS:

No Tools Required

WARRANTY:



NOTE: Repair procedures are under constant review, and therefore times are subject to change; those quoted here must be taken as guidance only. Always refer to TOPIx to obtain the latest repair time.



NOTE: DDW requires the use of causal part numbers. Labor only claims must show the causal part number with a quantity of zero.

DESCRIPTION	SRO	TIME (HOURS)	CONDITION CODE	CAUSAL PART

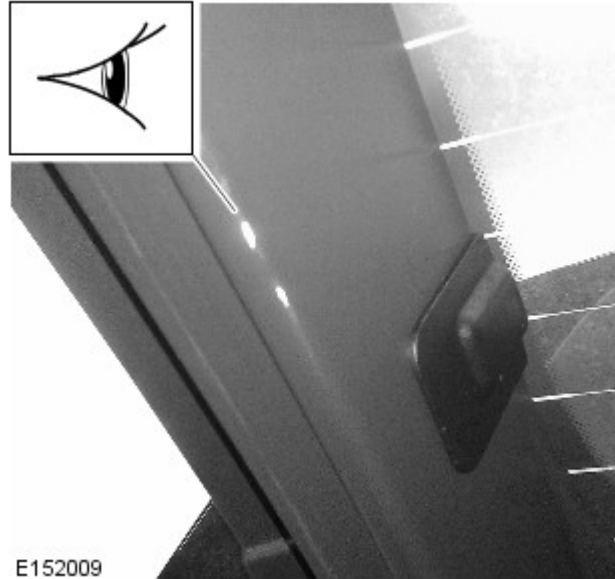
Tailgate Inner Paint Repair	76.28.89.61	0.30	30	LR039108
Loadspace cover - Renew	76.19.45	0.1	30	LR039108



NOTE: Normal Warranty policies and procedures apply.

REPAIR PROCEDURE:

1. Identify damaged area.



2. Flat the area and prepare area for painting.

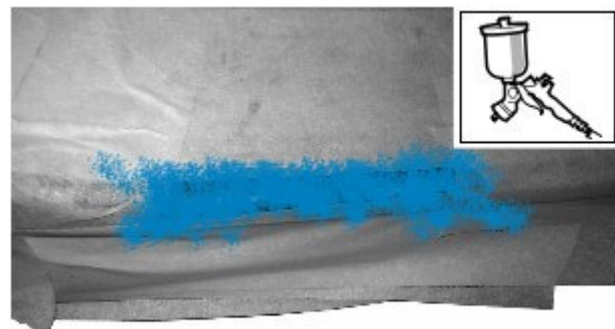
3. Mask any exposed painted areas, including the tailgate lift strut and lower area of the spoiler.

- Mask off painted areas to expose only the affected area.



4. Apply paint over damaged area.

- Dust spray 2/3 very light applications; allow to touch dry.
- Damaged area should still be visible.

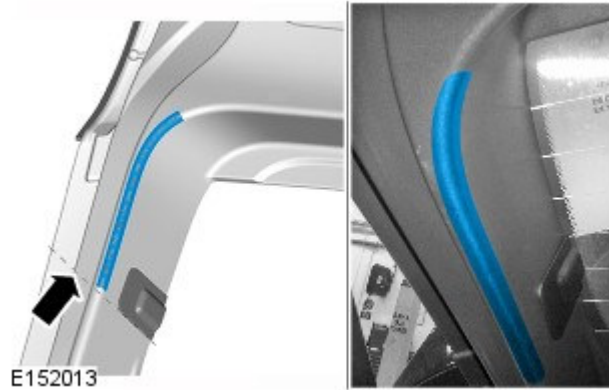


5. Carry out a second paint application; allow to touch dry.
- If damaged area is still visible, repeat the paint procedure.
 - Once dry, ensure the area is clean and prepared for decal fitment.
6. Check for any paint overspray onto adjacent body panels including spoiler.
- Clean off any observed overspray before progressing.

7.  **NOTE: Care must be taken to ensure the decal tape covers evenly around the tail lift seam.**

Apply tailgate decal.

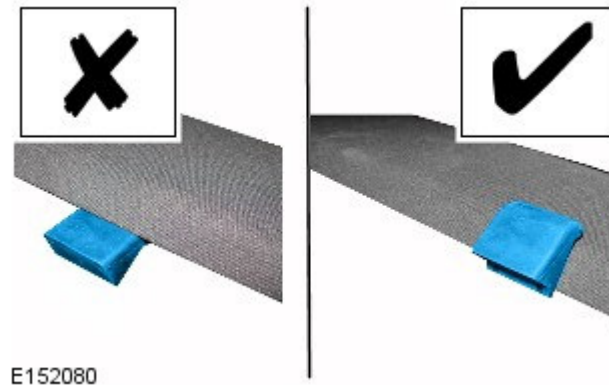
- Use the top of the heated tailgate electrical connector cover as datum point.
- Apply with finger tips by dabbing into place.




8. Repeat steps 1-7 to the other side of the tailgate trim.
9. Install the new Alston loadspace cover.

10.  **NOTE: The tangs shown are those which are part of the tailgate.**

Loadspace cover in the possible foul condition ('X') and also in the correct position ('tick').



11.  **NOTE: The loadspace cover may become incorrectly seated if the loadspace area is overloaded. Should this occur, advise the owner about the loadspace cover stow position shown. Refer to Owner's Handbook for further information.**

Loadspace cover shown in stowed position.

