

Classification: RS14-006	Reference: ITB14-025	Date: June 2, 2014
------------------------------------	--------------------------------	------------------------------

2014 QX60; FRONT SEAT BELTS SUDDENLY TIGHTEN DURING FIRST SLOW ACCELERATION AFTER A COLD SOAK

APPLIED VEHICLE: 2014 QX60 (L50)
2014 QX60 Hybrid (L50)

IF YOU CONFIRM:

The front Pre-Crash Seat Belt System suddenly cinches down the front seat belts (only belts that are buckled) for a few seconds and then releases them while moving forward in drive under the following conditions:

- After the vehicle has been cold soaked overnight.
And
- After the vehicle has been placed in reverse and briefly backed and then placed in drive.
And
- During the first initial slow acceleration after being shifted into drive.
And
- No DTCs are set.
And
- The Brake Pedal Stroke Sensor signal is not between 1.0V and 1.3V.

ACTION

Adjust the Brake Pedal Stroke Sensor with service procedure starting on page 2.

IMPORTANT: The purpose of "ACTION" (above) is to give you a quick idea of the work you will be performing. You **MUST** closely follow the entire Service Procedure as it contains information that is essential to successfully completing the repair.

Infiniti Bulletins are intended for use by qualified technicians, not 'do-it-yourselfers'. Qualified technicians are properly trained individuals who have the equipment, tools, safety instruction, and know-how to do a job properly and safely. NOTE: If you believe that a described condition may apply to a particular vehicle, DO NOT assume that it does. See your Infiniti dealer to determine if this applies to your vehicle.

SERVICE PROCEDURE

1. Connect the plus VI to the vehicle.
2. Connect the AC adapter to the CONSULT PC.
3. Turn on the CONSULT PC, and then open C-III plus.
4. Press the vehicle's power ("ignition") switch twice without depressing the brake pedal.
 - The meter and gauges will illuminate.

CAUTION: Do Not start the vehicle.

NOTE: Make sure all accessories are turned off.

5. After the plus VI is recognized, select **Diagnosis (One System)**.

NOTE: Make sure all applications other than C-III plus are closed.

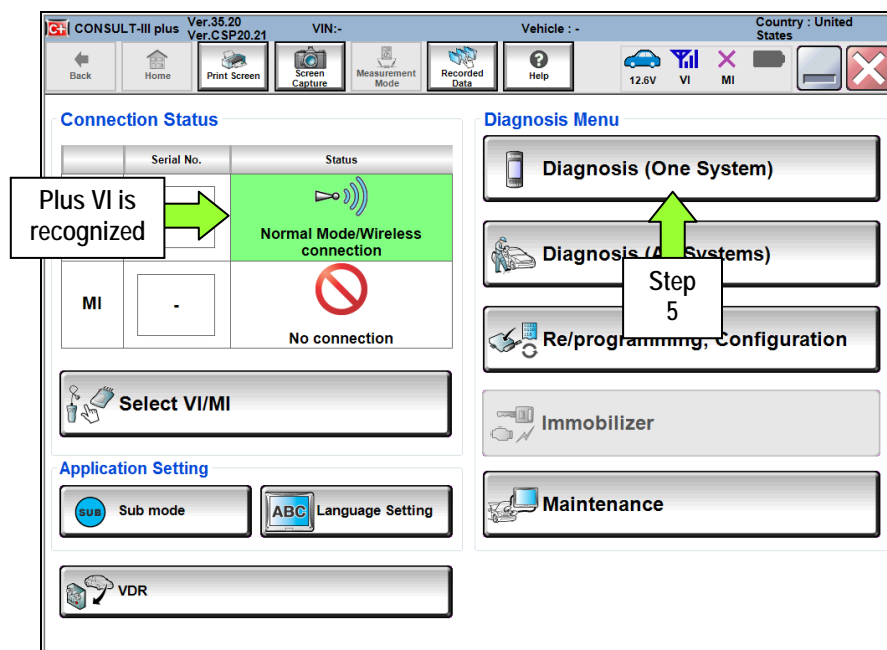


Figure 1

6. Select PRECRASH SEATBELT.

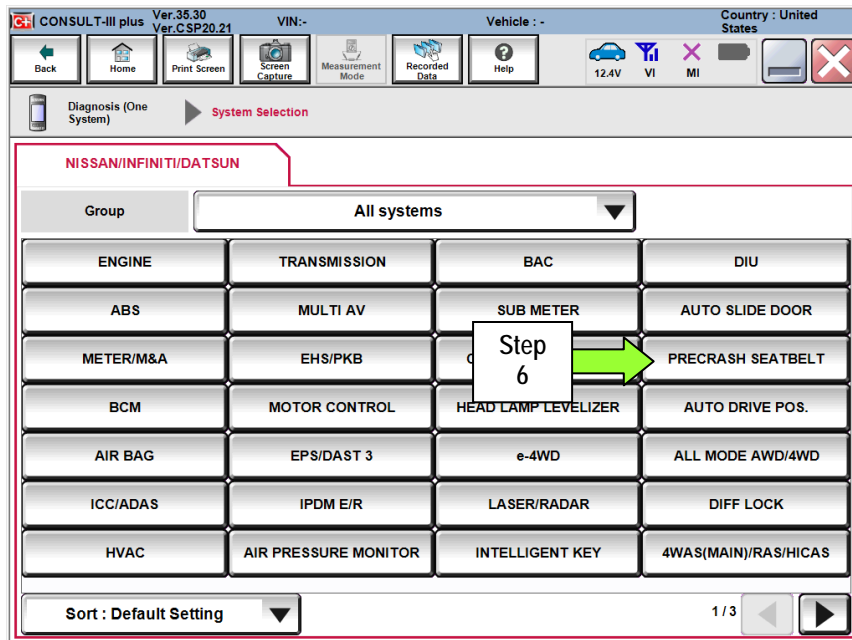


Figure 2

7. Select Data Monitor.

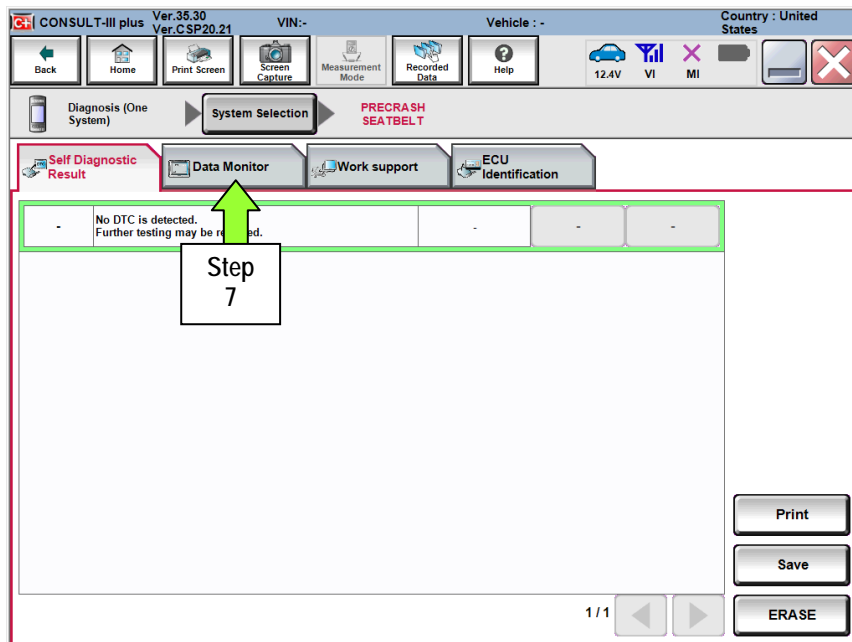


Figure 3

8. Select **Clear Monitor Item** and then **BRK PEDAL SNSR1**.

9. Select **START**.

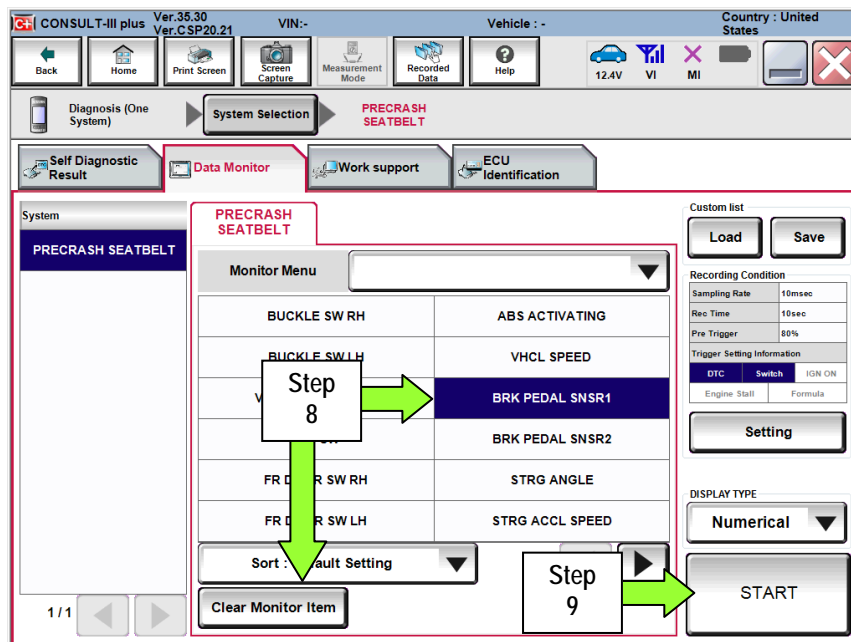


Figure 4

10. Check the resting voltage (no pressure on the brake pedal) of the **BRK PEDAL SNSR1** (Brake Pedal Stroke Sensor).

Is the voltage between 1.0V – 1.3V?

- Yes: This bulletin does not apply.
 - Refer to the Electronic Service Manual (ESM) for further diagnostics.
- No: Proceed to step 11 and adjust the Brake Pedal Stroke Sensor voltage.

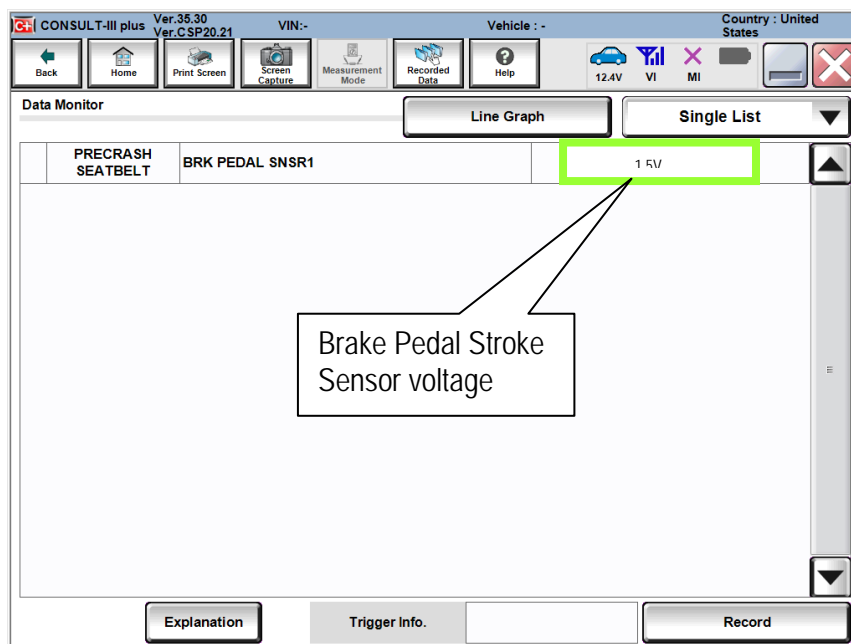


Figure 5

11. Loosen the two 10mm nuts that are retaining the Brake Pedal Stroke Sensor.

NOTE: loosen the rear nut only enough to allow the adjustment.

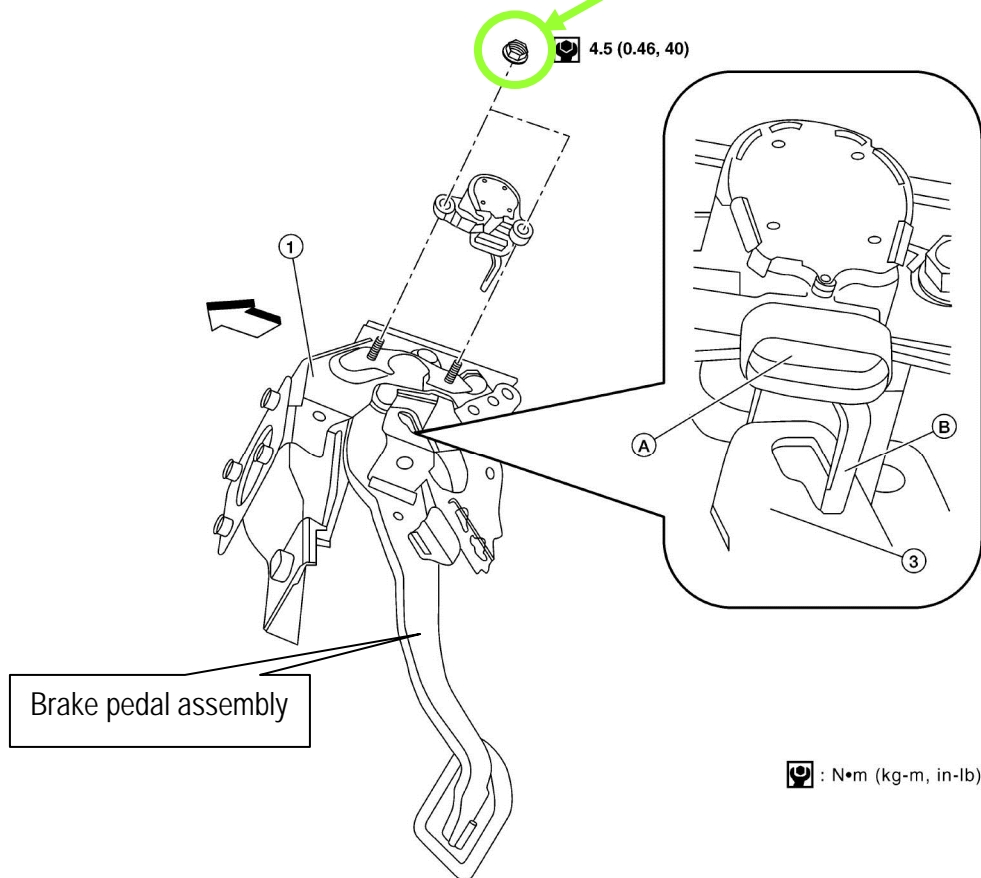
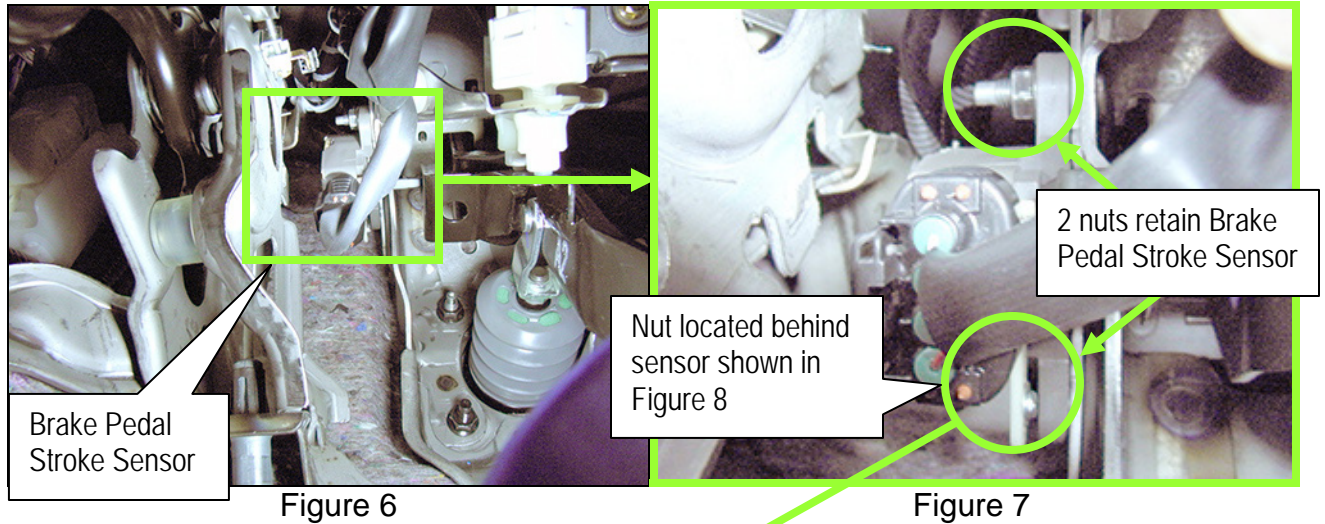


Figure 8

12. Adjust BRK PEDAL SNSR1 to between 1.0V – 1.3V.

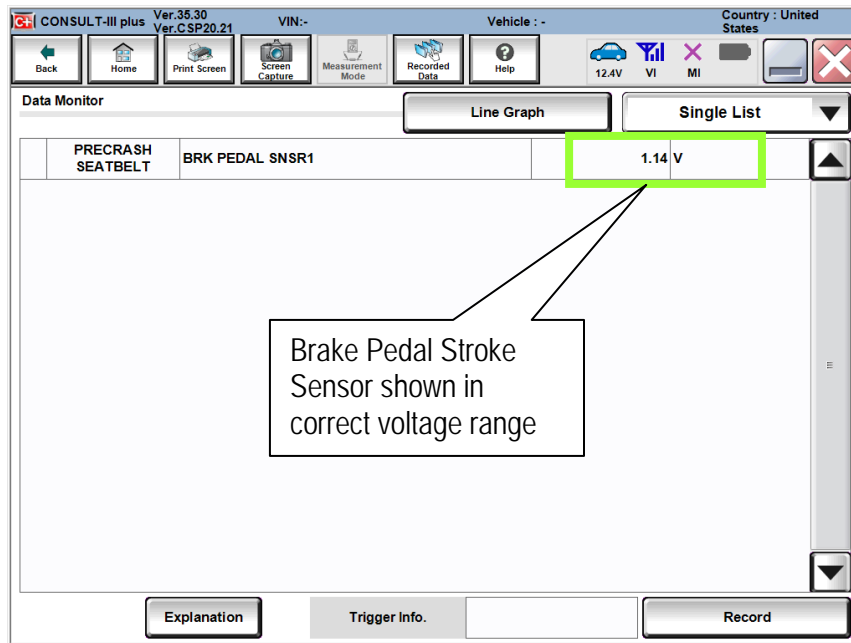


Figure 9

13. Tighten the front nut first and confirm that the voltage is still in the correct range.

14. Tighten rear nut and again confirm that the voltage is still within the 1.0 to 1.3 volt range.

CLAIMS INFORMATION

Submit a Primary Failed (PP) type line claim using the following claims coding:

DESCRIPTION	PFP	OP CODE	SYM	DIA	FRT
Adjust Brake Pedal Stroke Sensor	(1)	PX71AA	ZE	32	0.3

(1) Refer to the electronic parts catalog (FAST) and use the Brake Pedal Stroke Sensor part number (47920-xxxxx) as the Primary Failed Part (PFP).

