



SERVICE BULLETIN

Classification:

EC13-008b

Reference:

NTB13-058b

Date:

January 27, 2014

SENTRA; INTERMITTENT LOW ENGINE RPM AT IDLE OR STOPS RUNNING COMING TO A STOP

This bulletin has been amended to **APPLIED VEHICLES**. ECM part numbers have been added to Table A. Discard all previous versions of this bulletin.

APPLIED VEHICLE: 2013 and 2014 Sentra (B17)

IF YOU CONFIRM:

The engine RPM intermittently drops very low while stopped (idling) or the engine stops running while coming to a stop.

NOTE: These symptoms can occur under the following conditions:

- Low engine RPM at idle while the A/C is off and without any electrical load from the alternator
- The engine speed (RPM) becomes low while coming to a stop with the A/C on
- The engine stops running when coming to a stop

ACTION:

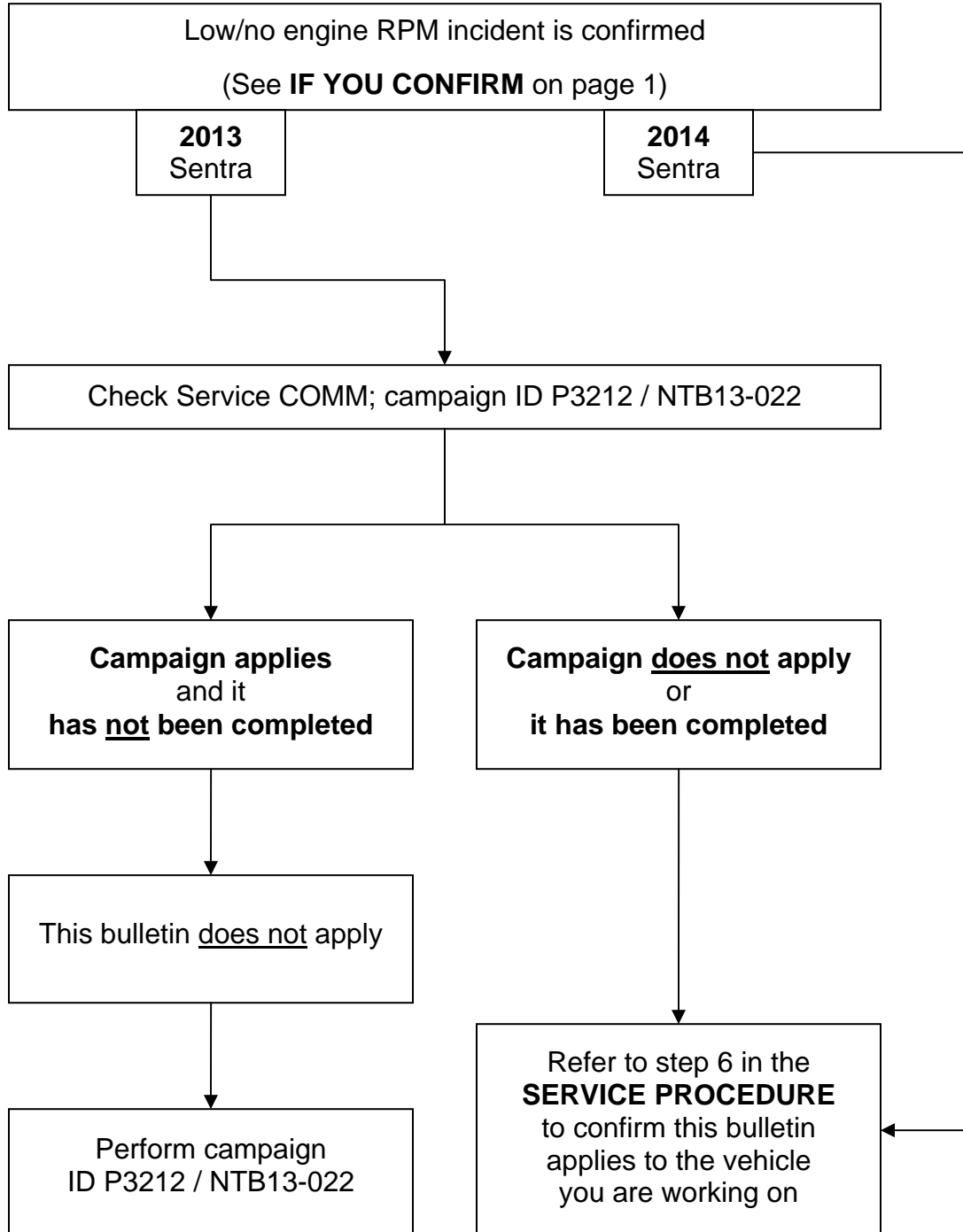
1. Refer to the **Repair Overview** on page 2 to determine if this bulletin applies.

NOTE: On certain specific 2013 Sentra vehicles campaign ID P3212 / NTB13-022 may apply. Make sure to use the **Repair Overview** to determine if the campaign bulletin or this bulletin applies, or neither apply.

IMPORTANT: The purpose of **ACTION** (above) is to give you a quick idea of the work you will be performing. You **MUST** closely follow the entire **SERVICE PROCEDURE** as it contains information that is essential to successfully completing this repair.

Nissan Bulletins are intended for use by qualified technicians, not 'do-it-yourselfers'. Qualified technicians are properly trained individuals who have the equipment, tools, safety instruction, and know-how to do a job properly and safely. **NOTE:** If you believe that a described condition may apply to a particular vehicle, **DO NOT** assume that it does. See your Nissan dealer to determine if this applies to your vehicle.

Repair Overview



SERVICE PROCEDURE

NOTE:

- Most instructions for reprogramming with CONSULT-III plus (C-III plus) are displayed on the CONSULT PC screen.
- If you are not familiar with the reprogramming procedure, [click here](#). This will link you to the "CONSULT- III plus (C-III plus) Reprogramming" general procedure.
- Take the vehicle for a 10 minute drive in order to meet the following Idle Air Volume Learn (IAVL) conditions:
 - Engine coolant temperature: 70 -100°C (158 -212°F)
 - Battery voltage: More than 12.9V (At idle)
 - Transmission: Warmed up



Figure A

- After reprogramming is complete, you will be required to perform Throttle Valve Closed Position, Idle Air Volume Learn, Accelerator Closed Position, and DTC erase.

CAUTION:

- Connect the GR8 to the vehicle 12 volt battery and set to ECM power supply mode. If the vehicle battery voltage drops below 12.0V or rises above 13.5V during reprogramming, the ECM may be damaged.
- Be sure to turn OFF all vehicle electrical loads. If a vehicle electrical load remains ON, the ECM may be damaged.
- Be sure to connect the AC Adapter. If the CONSULT PC battery voltage drops during reprogramming, the process will be interrupted and the ECM may be damaged.
- Turn off all external Bluetooth® devices (e.g., cell phones, printers, etc.) within range of the CONSULT PC and the VI. If Bluetooth® signal waves are within range of the CONSULT PC during reprogramming, reprogramming may be interrupted and the ECM may be damaged.

1. Connect the CONSULT PC to the vehicle to begin the reprogramming procedure.
2. Open C-III plus.
3. Wait for the plus VI to be recognized.
 - Serial number will display when the plus VI is recognized.
4. Select **Re/programming, Configuration**.

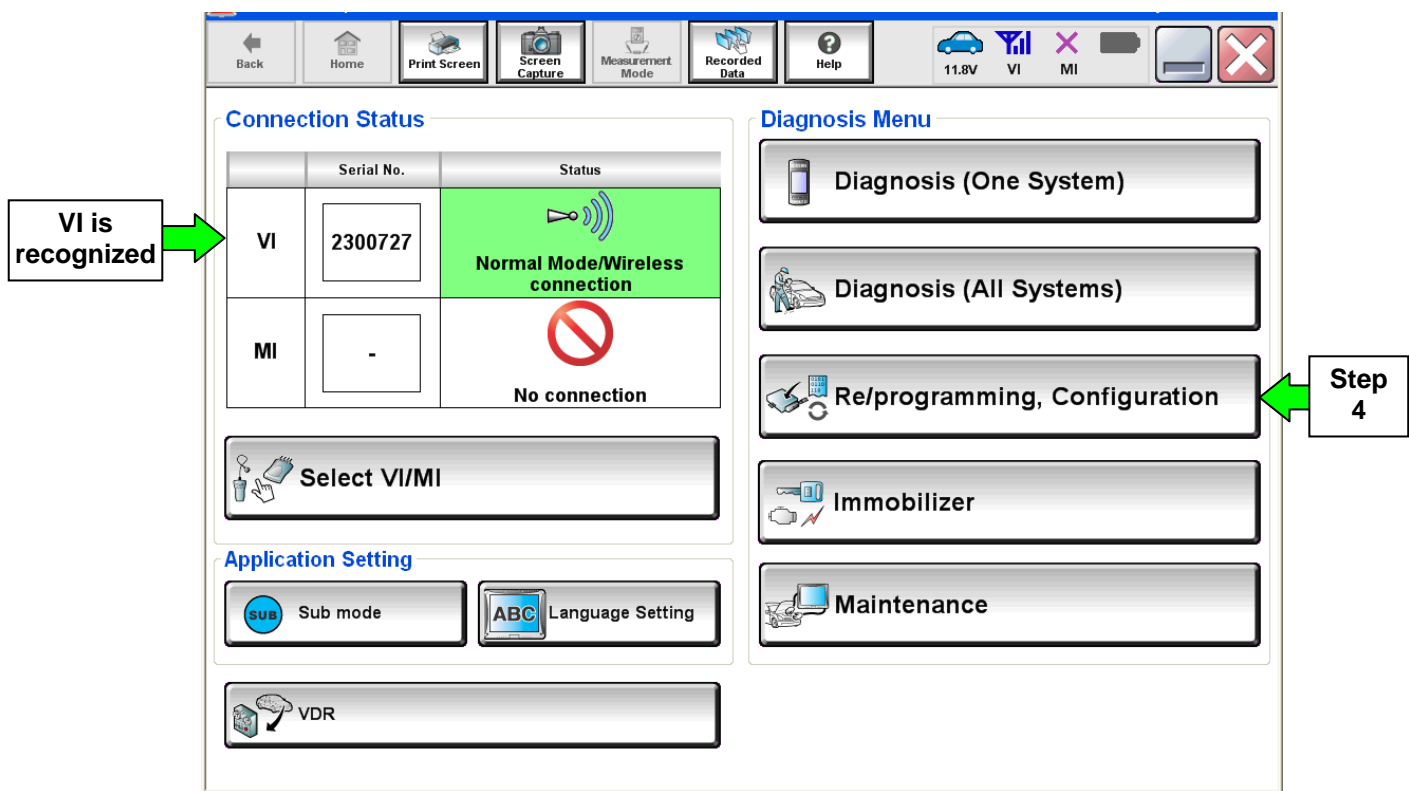


Figure 1

5. Follow the on-screen instructions and navigate the C-III plus to the screen shown in Figure 2 on the next page.

6. When you get to the screen shown in Figure 2, confirm this bulletin applies as follows.

A. Find the ECM **Part Number** and write it on the repair order.

NOTE: This is the current ECM Part Number (P/N).

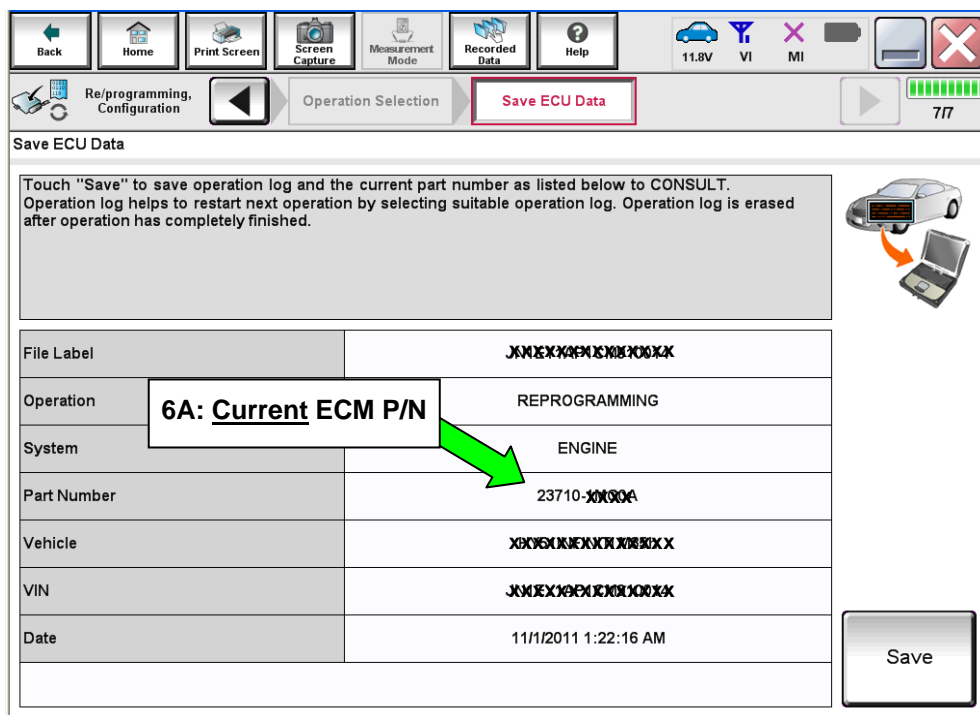


Figure 2

B. Compare the P/N you wrote down to the numbers in the **Current ECM Part Number** column in **Table A** below.

- If there is a match, this bulletin applies. Continue with the reprogramming procedure.
- If there is not a match, this bulletin does not apply:
 - a. For 2013 Sentra vehicles only: Check Service COMM; campaign ID P3212 / NTB13-022 may apply.
 - b. Close C-III plus and refer to ASIST for further diagnostic information.

Table A

MODEL	CURRENT <u>ECM</u> PART NUMBER: 23710-
2013 Sentra	3SA0B, 3SA6B
	3SA0C, 3SA6C
	3SA0D, 3SA2D, 3SA4D, 3SA5D, 3SA6D
	3SA2E, 3SA4E, 3SA5E
	3SB0B, 3SB0C
	3SG2B, 3SG2C
	3SG3A, 3SG3D, 3SG3E
2014 Sentra	9AM0A, 9AM1A, 9AM2A, 9AM3A, 9AM4A, 9AM5A

7. Follow the on-screen instructions to navigate C-III plus and reprogram the ECM.

NOTE:

- In some cases, more than one new P/N for reprogramming is available.
 - In this case, the screen in Figure 3 displays.
 - Select and use the reprogramming option that **does not** have the message “Caution! Use ONLY with NTBXX-XXX”.
- If you get this screen and it is blank (no reprogramming listed), it means there is no reprogramming available for this vehicle. Close C-III plus and refer back to ASIST for further diagnosis.

The screenshot shows the 'Select Program Data' screen in the C-III plus software. The top navigation bar includes buttons for Back, Home, Print Screen, Screen Capture, Measurement Mode, Recorded Data, and Help. On the right, it displays vehicle status: 11.8V, VI, MI, and a battery level indicator. Below the navigation bar, a sequence of steps is shown: Re/programming, Configuration, Precaution, **Select Program Data** (highlighted with a red arrow), Confirm Vehicle Condition, and a final step with a play button. The main area contains a text box with instructions: 'Touch and select the reprog/programming data listed below. In case no reprog/programming data is listed below, confirm the vehicle selection, VIN and reprog/programming data in CONSULT.' To the right of this text is a large yellow warning triangle with a black exclamation mark. Below the text is a table with three columns: 'Current Part Number', 'Part Number After Repro/programming', and 'Other Information'. The table has two rows of placeholder text 'XXXXX-XXXXX' and 'XXXXXXXXXXXXXXXXXXXXXXXXX'. At the bottom right, there is a 'Next' button and a '0/0' indicator.

System	ENGINE	
Current Part Number	Part Number After Repro/programming	Other Information
XXXXX-XXXXX	XXXXX-XXXXX	XXXXXXXXXXXXXXXXXXXXXXXXX
XXXXX-XXXXX	XXXXX-XXXXX	XXXXXXXXXXXXXXXXXXXXXXXXX

Figure 3

8. When the screen in Figure 4 displays, reprogramming is complete.

NOTE: If the screen in Figure 4 does not display (reprogramming does not complete), refer to the information on the next page.

9. Disconnect the battery charger from the vehicle.

10. Select **Next**.

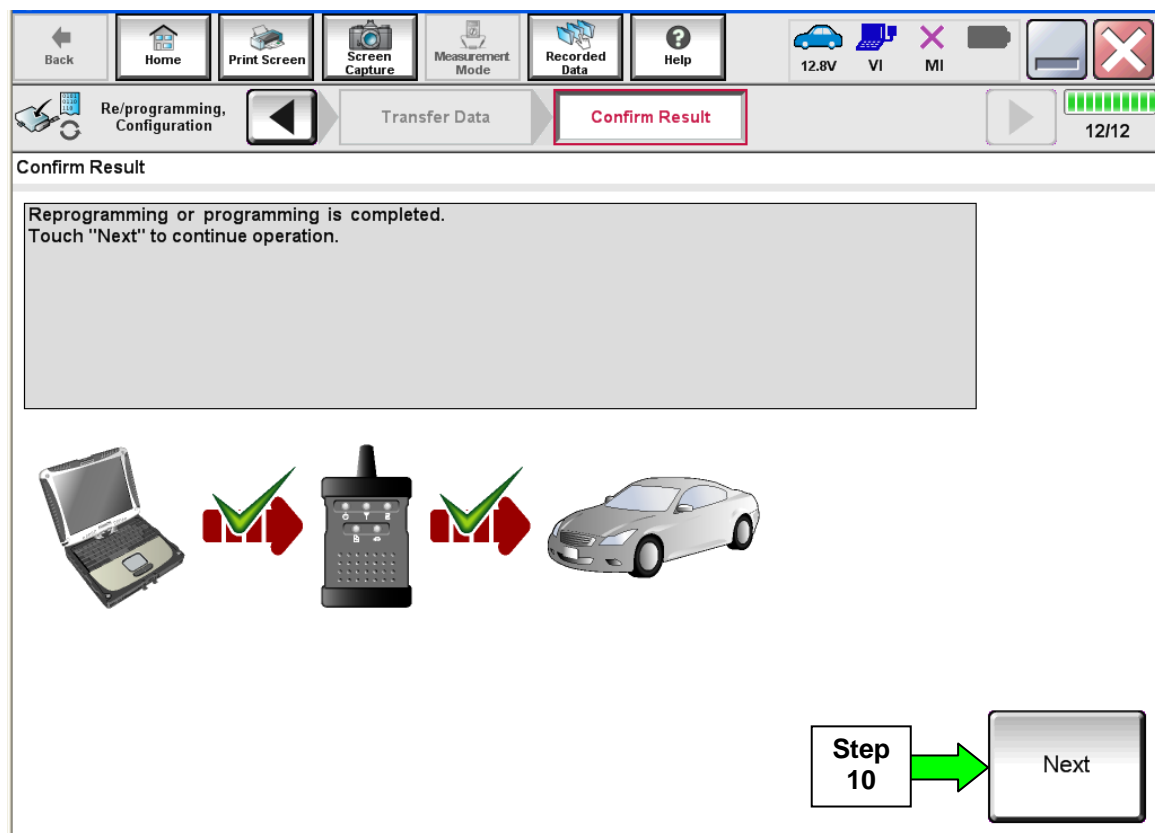


Figure 4

NOTE:

- In the next steps (page 9), you will perform Throttle Valve Closed Position, Idle Air Volume Learn, Accelerator Closed Position, and DTC erase.
- These operations are required before C-III plus will provide the final reprogramming confirmation report.

ECM Recovery

Do not disconnect plus VI or shut down C-III plus if reprogramming does not complete.

If reprogramming does not complete and the “!?” icon displays as shown in Figure 5:

- Check battery voltage (12.0–15.5 V).
- Ignition is ON, engine OFF.
- External Bluetooth® devices are OFF.
- All electrical loads are OFF.
- **Select retry and follow the on screen instructions.**
- “Retry” may not go through on first attempt and can be selected more than once.

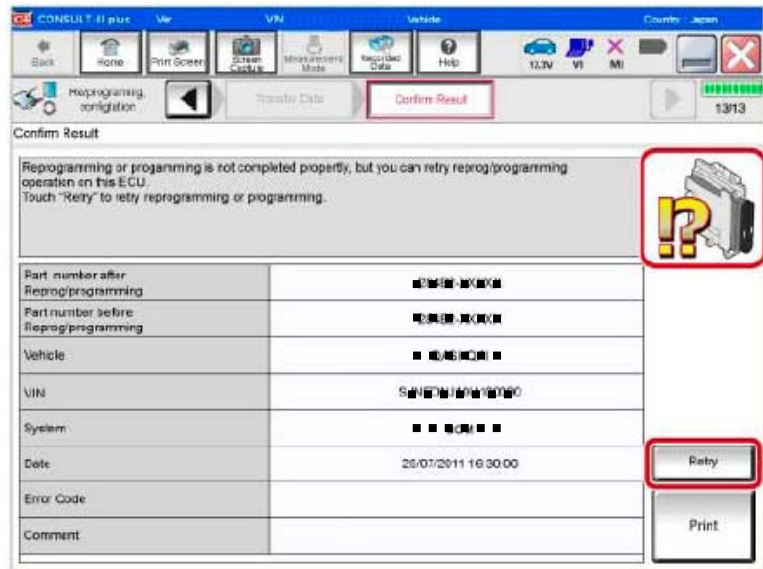


Figure 5

If reprogramming does not complete and the “X” icon displays as shown in Figure 6:

- Check battery voltage (12.0 – 15.5 V).
- CONSULT A/C adapter is plugged in.
- Ignition is ON, engine OFF.
- Transmission is in Park.
- All C-III plus / VI cables are securely connected.
- All C-III plus updates are installed.
- **Select Home, and restart the reprogram procedure from the beginning.**

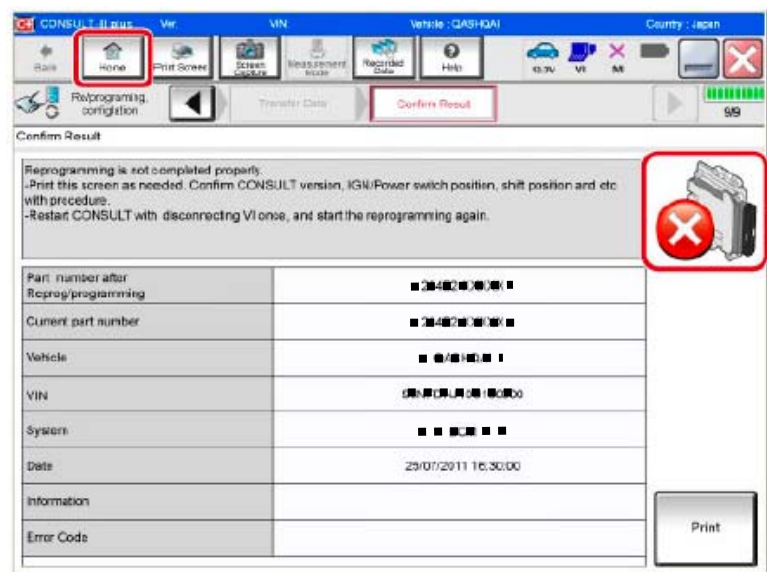


Figure 6

11. Follow the on-screen instructions to perform the following:

- **Throttle Valve Closed Position**
- **Idle Air Volume Learn (IAVL)**

NOTE:

- **Listed below are common conditions required for IAVL to complete.**
- **If IAVL does not complete within a few minutes, a condition may be out of range.**
- **Refer to the appropriate Electronic Service Manual (ESM) for specific conditions required for the vehicle you are working on.**
 - Engine coolant temperature: 70 -100° C (158 -212°F)
 - Battery voltage: More than 12.9V (At idle)
 - Selector lever: P or N
 - Electric load switch: OFF (Air conditioner, headlamp, rear window defogger)
 - Steering wheel: Neutral (Straight-ahead position)
 - Vehicle speed: Stopped
 - Transmission: Warmed up
- **Accelerator Pedal Close Position Learning**
- **Erase DTCs**

Continue to the next page.

12. When the entire reprogramming process is complete, the screen in Figure 7 will display.
13. Verify the before and after part numbers are different.
14. Print a copy of this screen (Figure 7) and attach it to the repair order for warranty documentation.
15. Select **Confirm**.

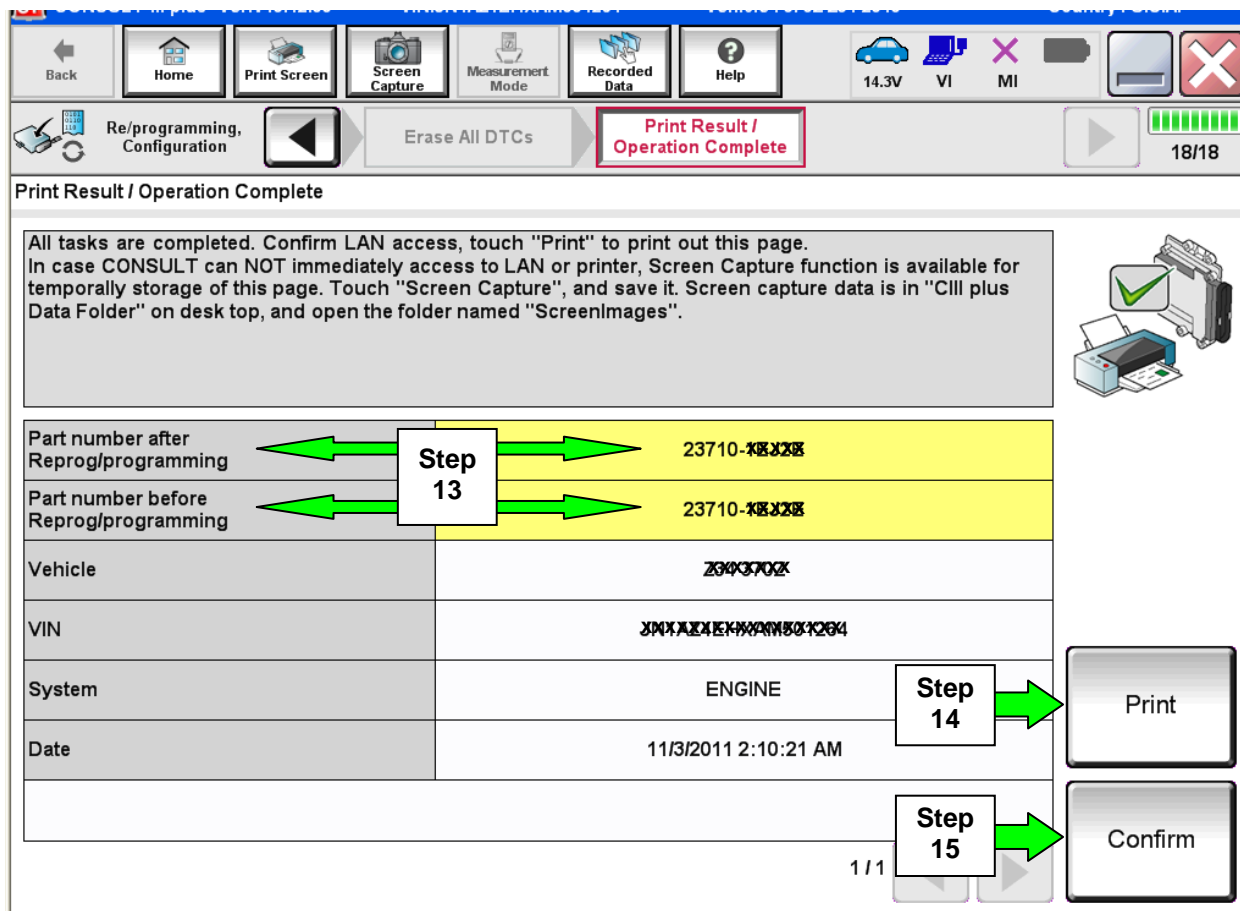


Figure 7

16. Close C-III plus.
17. Turn the ignition OFF.
18. Disconnect the plus VI from the vehicle.
19. Make sure the vehicle operates correctly and the MIL is OFF.
 - If the MIL comes ON, go back to ASIST for further diagnostic information.
 - Diagnosis and repairs beyond ECM reprogramming are not covered by this bulletin.

CLAIMS INFORMATION

Submit a Primary Part (PP) type line claim using the following claims coding:

DESCRIPTION	PFP	OP CODE	SYM	DIA	FRT
Reprogram ECM	(1)	DE97AA	HD	32	(2)

- (1) Reference the Repair Order and use the current ECM P/N written down in step 6 of the Service Procedure as the PFP.
- (2) Reference the current Nissan Warranty Flat Rate Manual and use the indicated FRT.

