

Supplier:

Shell Rotella

Supplier Information

For over 40 years, Shell Rotella® heavy duty engine oils have delivered unrivaled protection and performance. From wear, deposits and emissions protection of Shell Rotella® T Triple Protection®, or the improved fuel economy of Shell Rotella® T5 Synthetic Blend Technology, to the excellent high/low temperature protection of Shell Rotella® T6 Full Synthetic, there is a Shell Rotella® motor oil engineered to handle your needs. Also offering products such as Antifreeze / coolants, Shell Spirax Transmission Fluid, Shell Gadus Greases, Shell Tellus Hydraulic Fluids, Shell Turbo Turbine Oil & more.

Hino Parts Support Phone: 866-372-4466

Hino Parts Support Email: helpdesk@hino.com

Hino Parts Support Fax: 662-342-3939

Customer Service & Technical Support

Shell Phone: 1-800-332-6457 Technical Questions 800-237-8645, option 3

Shell Email: lubricantsinquiries-us@shell.com; lubricantsorders-us@shell.com

Shell Website: <http://www.shell.com/rotella.html>

Shell Fax: 877-536-7859 (inquiries) | 877-536-7714 (orders)

Order Procedures:

All orders are to be placed through the Hino Dealer Connect System (DCS). For special orders or for customer support contact supplier directly via phone number.

Stock Orders Enter orders in DCS Screen DC202 under Sales Type "S". All direct ship (DS Orders) items will be shipped from a local supplier PDC.

Emergency Orders Emergency orders (EM) may be entered into DCS screen DC202 as a Sales Type "E" or "V". All emergency orders will be processed with a "rush" order. Additional freight and Handling fees will be identified on the Hino invoice.

Minimum Order Quantity There is a 55 Gallon Package requirement and a 165 Gallon Bulk minimum order requirement on emergency or stock orders.

Freight Policy:

Orders not meeting the above MOQ will not be accepted by Shell. Shipments within the Continental United States are Free Freight for all orders over the above mentioned MOQ. All orders will be shipped via the most efficient method.

Free Freight Policy:

All stock orders meeting the above MOQ will include prepaid free freight to the dealership.

Order Fulfillment Policy:

The standard order processing time is 2 business days from date of order placement. Delivery is 7 business days or less after order is processed. Trailer Load / Bulk is typically 7-11 days.

FAQ

How many jugs of oil come on a pallet? 75 cases per pallet, 3 gallon jugs per case.

How much coolant is in a trailer Load? Half TL is 10 Pallets, Full TL is 20 Pallets (1 pallet = 4 drums or 42 5 gal pails or 36 Cases (6 gallons per case)). How many qts are on a full pallet? 1008 qts (12 qts per case, 84 cases per pallet) How many 5 gal pails / pallet? 42

Part Number Pricing:

Pricing will be available on-line in the Hino DCS system. In addition, the prices will be forwarded to your service bureaus within two weeks of each pricing update.

Format:

Standard Part numbers are directly carried over with a prefix of "SO-".

Mega Fleet:

All-Makes parts are not included in the Hino Mega Fleet pricing file but should be sold to Mega Fleet customers and filed as Miscellaneous Items in Corcentric when submitting for reimbursement.

Warranty:

Please view supplier warranty documents as warranty varies based on item. Contact supplier directly.

Returns:

Contact supplier directly to obtain a Return Goods Authorization. There are no returns on Bulk Products.

Shipping Inspection and Damaged Product:

All merchandise should be inspected upon arrival and carrier damage claims should be filed with the carrier immediately. We are not responsible for, nor are we in a position to make a claim after the freight carrier accepts the shipment from us. For excess stock returns, contact the supplier directly.

Supplier Cross Reference Web Site:

www.shell.com/rotella

Conclusion:

You need to know your oil will protect your engine under all conditions. No matter how hot, cold, steep, dusty, muddy or extended operations. Demand protection, demand Shell Rotella.

SHELL OIL COOLANTS | Hino Trucks | BULK Purchase Pricing | Order Must Be Received By November 30, 2016

Product	Color	Concentration	Package	Material #	Hino PN	Description	CPA Sale Gal Price Half-Trailer Load	CPA Sale Gal Price Trailer Load
Shellzone	Green	Concentrate	6/1 Gal Case	9401006021	SO-9401006021	Shellzone_6*1ugl	\$6.24	\$5.76
Shellzone	Green	Concentrate	55 Gal Drum	9401000055	SO-9401000055	Shellzone_1*55ugl	\$5.67	\$5.19
Shellzone	Green	50-50	6/1 Gal Case	9406706021	SO-9406706021	Shellzone AF/C 50/50_6*1ugl	\$4.71	\$4.25
Shellzone	Green	50-50	55 Gal Drum	550022525	SO-550022525	Shellzone AF/C 50/50_1*55ugl	\$4.14	\$3.69
Rotella Fully Form	Purple	Concentrate	6/1 Gal Case	550027616	SO-550027616	Full Form AF SCA_6*1ugl	\$6.78	\$6.29
Rotella Fully Form	Purple	Concentrate	55 Gal Drum	550027618	SO-550027618	Full Form AF SCA_1*55ugl_A011	\$6.46	\$5.97
Rotella Fully Form	Purple	50-50	6/1 Gal Case	550027617	SO-550027617	Full Form SCA 50-50_6*1ugl	\$5.23	\$4.76
Rotella Fully Form	Purple	50-50	55 Gal Drum	550027619	SO-550027619	Full Form SCA 50-50_1*55ugl	\$4.90	\$4.44
Rotella ELC	Red	Concentrate	6/1 Gal Case	9404106021	SO-9404106021	Rotella ELC Concentr_6*1ugl	\$9.03	\$8.49
Rotella ELC	Red	Concentrate	55 Gal Drum	550022521	SO-550022521	Rotella ELC Concentr_1*55ugl	\$8.60	\$8.07
Rotella ELC	Red	50-50	6/1 Gal Case	9404206021	SO-9404206021	Rotella ELC Pre-dilu_6*1ugl	\$7.03	\$6.53
Rotella ELC	Red	50-50	55 Gal Drum	550022522	SO-550022522	Rotella ELC Pre-dilu_1*55ugl	\$6.60	\$6.11
Rotella ELC NF	Red	Concentrate	6/1 Gal Case	550041812	SO-550041812	Rotella ELC NF Conc_6*1ugl_A0II	\$9.19	\$8.65
Rotella ELC NF	Red	Concentrate	55 Gal Drum	550041813	SO-550041813	Rotella ELC NF Conc_1*55ugl_A0II	\$8.76	\$8.23
Rotella ELC NF	Red	50-50	6/1 Gal Case	550041810	SO-550041810	Rotella ELC NF 50/50_6*1ugl_A0II	\$7.14	\$6.64
Rotella ELC NF	Red	50-50	55 Gal Drum	550041811	SO-550041811	Rotella ELC NF 50/50_1*55ugl_A0II	\$6.71	\$6.21
Rotella ELC Ultra	Yellow	Concentrate	6/1 Gal Case	550024730	SO-550024730	RotellaUltraELC Conc_6*1ugl	\$11.25	\$10.67
Rotella ELC Ultra	Yellow	Concentrate	55 Gal Drum	550022381	SO-550022381	RotellaUltraELC Conc_1*55ugl	\$10.82	\$10.25
Rotella ELC Ultra	Yellow	50-50	6/1 Gal Case	550026252	SO-550026252	Rotella Ultra ELC 50_6*1ugl	\$8.28	\$7.76
Rotella ELC Ultra	Yellow	50-50	55 Gal Drum	550022382	SO-550022382	Rotella Ultra ELC 50_1*55ugl	\$7.85	\$7.34

Notes:

***Hino dealer must contact their Hino District Parts Manager to request a CPA prior to making an order. Once the CPA is approved, dealer may make their order(s) for the month.**

***Gallon jugs are sold by the gallon price & 55 gal drums are sold by the each.**

***Half TL is 10 Pallets, Full TL is 20 Pallets (1 pallet = 4 drums or 36 Cases).**

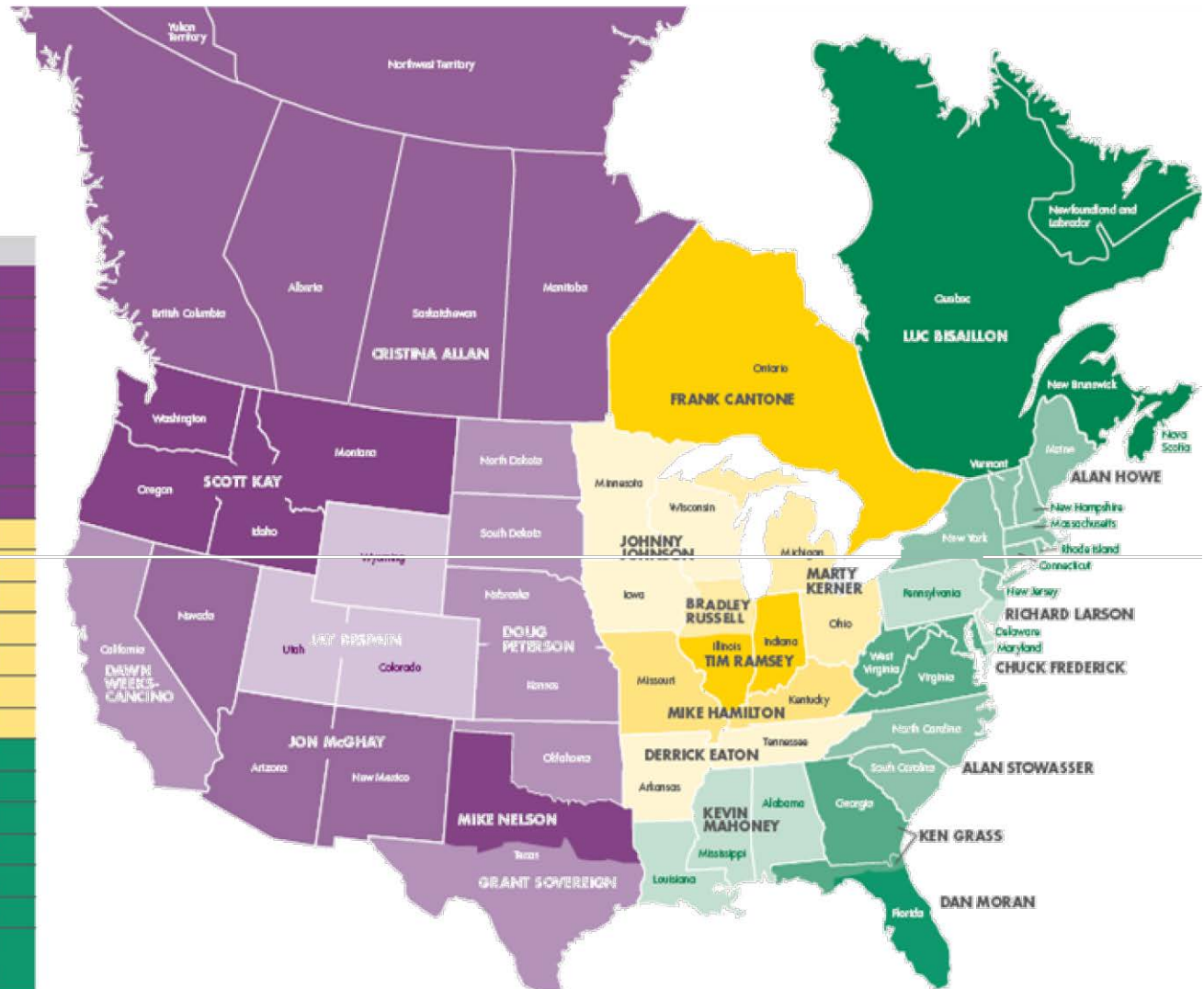
***Prices are based on full or half truckloads direct from AF plant locations.**

***Prices are subject to change without notice based on ethylene glycol and freight cost movements.**

**Added Rewards
2.5%**

NA SALES COVERAGE MAP

REGIONAL SALES CONTACT	PHONE
Scott Kay	(503) 530-0092
Dawn Weeks-Cancino	(714) 394-9192
Jay Despain	(801) 243-8125
Jon McGray	(602) 418-5823
Grant Sovereign	(713) 858-5242
Mike Nelson	(214) 906-2893
Doug Peterson	(816) 560-0563
Cristina Allan	(587) 899-0604
Johnny Johnson	(615) 481-9908
Bradley Russell	(630) 544-9504
Tim Ramsey	(334) 524-4630
Mike Hamilton	(606) 242-7347
Derrick Eaton	(423) 619-1694
Marty Kerner	(248) 760-7606
Frank Cantone	(905) 978-3265
Alan Howe	(413) 519-7812
Richard Larson	(302) 383-9474
Chuck Frederick	(704) 906-5648
Alan Stowasser	(803) 984-9547
Ken Grass	(404) 925-7433
Dan Moran	(561) 779-6900
Luc Bisailion	(613) 297-8022
Kevin Mahoney	(601) 529-7244



Full Portfolio of Products that Protect



#1 SELLING HEAVY DUTY ENGINE OIL IN NORTH AMERICA



Shell Rotella® T6 Full Synthetic

Save up to \$1,064 per truck: annually²

• Fuel economy savings up to 1.5%



Shell Rotella® TS Synthetic Blend

Save up to \$1,134 per truck annually²

• Fuel economy savings up to 1.6%



Shell Rotella® T Triple Protection

Up to 2.2% reduction in iron wear¹

Oil
05!>01-16
05'-1-1.5
O3>b1 firdc' E1fg. '' ' -
OSl>ll'dold'1J £>

GIAli'
D Stsl Gcnr•SJ V7:10C 2
D Stsl Goc:uf SJ •A600 2
O Std Ga:u. •S2 VIC'.A
D Std Ga:li.li" SJ A (l(x)lln
☐ Shell Gade® SS V460 00
(Wheel Hub)

COOLAKIS
D:hol''''''''
lnd1 C 50/III
O :9lOI adetN:sof 50
D= .!;•/!0

D:9lOI SCGMf 30
0:Jd":pa<"S6GNEJ!NHQ
O :1101:p,...soAr ms
O Sid !pn:>" S2 A- A:ISO



DIFFERENTIALS
O Sid SfllC" Sbi>YF.'!#5W.QIJ
O Sid Slllm" 56W/>." e0..:1:G>
O Sid Sf*>" I-II 00.TW

Spirax

Shell ROTELLA®
Enl!!gill:ftl P «tion- **Gadus**

Shell ROTELIX

Energized Protection



THE SHELL ROTELLA® HEAVY-DUTY ENGINE ANTIFREEZE/COOLANT PRODUCT PORTFOLIO

Complete Protection for Your Heavy-Duty Engine

The **Shell Rotella®** family of heavy-duty motor oils and coolants are formulated to provide high-performance protection for today's heavy-duty diesel engines.

The **Shell Rotella®** brand is excited to offer a complete product line of extended life coolants (ELC) and fully formulated engine coolants, designed to deliver:

- **Protection against overheating-** Excellent heat transfer properties allow heat to transfer more effectively, protect against freeze and boil-over and help keep engines running cool
- **Corrosion protection-** Corrosion inhibitor technology protects metals against all forms of corrosion
- **Maintenance savings** – Technology helps extend coolant life and prolong the life of seals, hoses and other cooling system components – helping reduce overall maintenance costs

ELCs are designed to go 600,000 on-highway miles (and beyond with proper monitoring) and provide overall reduction in cooling system maintenance.

ELCs also offer complete cooling system component protection by helping to reduce water-pump failures, hard-water-scale deposits and silicate gel (the green goo you often see). We understand consumers' challenges and have designed a product portfolio to help make maintenance needs easier.

Our most advanced coolant, **Shell Rotella Ultra ELC**, is formulated to meet more severe operational conditions of modern, hotter-running engines. This is particularly important for new emission engines, especially those with EGR.

Product Features and Benefits

Today's modern engines demand effective heat transfer, freeze and boiling protection and corrosion protection for the cooling system. Shell Rotella® extended life coolants and fully formulated coolants satisfy these requirements.

How Shell Rotella® Coolants Compare to Each Other

Shell Rotella® Coolant Benefits	Shell Rotella Ultra ELC™	Shell Rotella® ELC	Shell Rotella® Fully Formulated with SCAs
Relative Protection Against Freeze and Overheating			
Freeze and boil-over protection	***	***	***
Heat transfer	***	***	***
Anti-scaling properties	***	**	**

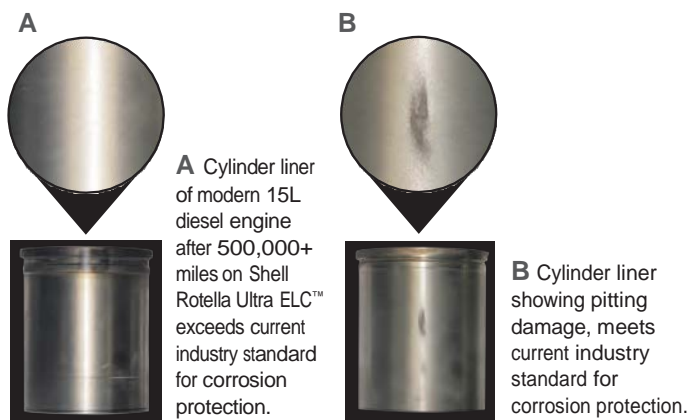
Protection of Engine and Cooling System Components from Corrosion

Aluminum corrosion protection	***	***	***
Copper/brass corrosion protection	***	***	***
Oxidation-thermal stability	***	***	***
Cylinder liner pitting corrosion protection	***	***	***
Compatible with elastomers and seals	***	***	***
Resistance to gel precipitate formation	***	***	***

Helps Reduce Overall Maintenance Costs

Neutralizing inhibitors	***	***	***
Maintenance (Testing, SCAs)	***	***	***
Service Life	***	***	***

* Cylinder liner protection maintained with addition of SCAs.



The addition of Shell Rotella Ultra ELC™ and Shell Rotella® Fully Formulated completes the line of heavy-duty coolants and complements the Shell Rotella® portfolio of high-performance engine oils. For questions please contact your sales representative.

Shell Rotella Ultra ELC™ nitrite-free extended-life coolant has demonstrated outstanding performance in protecting cylinder liners from pitting corrosion damage in 500,000+ mile field testing.

Which Shell Rotella® Product is Right for you?

Shell Rotella Ultra ELC™	Equipment	OEM Specification/Performance Level
<ul style="list-style-type: none"> Advanced ELC nitrite-free engine coolant technology provides excellent protection against pitting corrosion damage that can result from the adverse reaction of the coolant and vibrating cylinder liner Designed for use in 2010 or older engines Service life is 600,000 miles/12,000 hours with no extender required Advanced high-temperature corrosion protection Outstanding aluminum and copper/brass protection Exceptional heat transfer and anti-scaling properties that prevent hard water mineral build-up Eliminates need for supplemental coolant additives and for any coolant extenders Helps extend the life of water pumps, radiators and other cooling system components Excellent seal, elastomer and hose compatibility 	Caterpillar	ELC – Nitrite-free applications
	Cummins	14603
	DAF MA	74002
	Detroit Diesel	93K217
	Freightliner	48-25878
	MAN	324 Type SNF
	Mercedes	DBL 7700/325.3
	MtU	MTL 5048
	navistar	CEMS B1 – Type IIIa
Shell Rotella® ELC	Equipment	OEM Specification/Performance Level
<ul style="list-style-type: none"> ELC technology utilizing Organic Additive Technology corrosion inhibitors with nitrite and molybdate that prevent pitting corrosion damage on a cylinder liner Service life is 600,000 miles/12,000 hours with extender added at 300,000 miles Excellent high-temperature protection Excellent heat transfer Helps lower maintenance costs Helps improve water pump life Eliminates need for supplemental coolant additives 	Caterpillar	EC-1
	Cummins	Bulletin AEB No. 90.47
	Freightliner	48-25961
	Mack	014 GS 17009
	navistar	CEMS B1 – Type III
	PACCAR	CS0185
	volvo	TSI 260 002
Shell Rotella® Fully Formulated pre-charged with SCAs	Offered for customers wanting a fully formulated coolant	
<ul style="list-style-type: none"> Premium quality fully formulated coolant containing supplemental coolant additives (SCAs) to provide complete engine and cooling system protection Service life is typically 200,000–250,000 miles/2–3 years and requires monitoring and maintaining SCA additive levels Highly stabilized, low silicate formula reduces deposits Reduces risks of hard water scale Contains nitrite and molybdate to prevent adverse reaction of coolant and vibrating cylinder liner that can cause pitting corrosion damage 		

All coolants meet ASTM D3306/D6210

Our recommendations are based on industry and manufacturer trends.

To learn more about our products, call our customer service technical support at 1-800-237-8645.

© 2010 SOPUS Products. All rights reserved. CS5546-01

APPLICATION GUIDE



Modern engines: Shell Rotella® **t** triple protection® oils use the latest additive technology to protect under the most severe engine conditions found in modern low-emission engines. Shell Rotella® **t** triple protection® is suitable for a wide range of heavy duty engine applications. With its wide range of specifications met and approvals from many of the world’s leading engine makers, it is an excellent choice for on-highway fleets, general haul, construction, agriculture, public-transport operators, and diesel pickup trucks. It is designed to provide responsive protection that continuously adapts to your driving conditions, resulting in significantly improved



wear protection*, deposit control*, and resistance to breakdown at high temperatures.* the exclusive low-ash formulation helps protect the exhaust catalysts and particulate filters found on the latest low-emission vehicles. Suitable for virtually all modern low-emission heavy duty engines.



High-power use: With its excellent protection against wear and deposits, Shell Rotella® **t** triple protection® is suitable for a wide range of high-power, heavy duty diesel-engine applications where resistance to increased heat and stress is required.



**Compared to API CI-4 PLUS engine oils*

PRODUCT MATERIAL & PACKAGE SIZE

PRODUCT	12x1 QUART	3x1 GAL JUGS	2x2.5 GAL JUGS	5 GAL PAIL	55 GAL DRUM	275 GAL DRUM	BULK
15W-40 CJ-4	550019905	550019913	550019919	550019916	550019918	550019896	500004741
10W-30 CJ-4	550019906	550019920		550019915	550019917	550019863	500004740

OUR COMPLEMENTARY RANGE

In addition to the full range of Shell Rotella® heavy duty engine oils, Shell Lubricants offers a complete portfolio of lubricants for every part of your equipment, including Shell SplRax® gear and axle oils, Shell Donax® transmissions fluids, Shell RetInax® greases, Shell Rotella®eLC extended Life Coolant/antifreeze, and Shell HD antifreeze/Coolant.

HEALTH SAFETY AND ENVIRONMENT

Shell Rotella® **t** triple protection® oils are unlikely to present any significant health or safety hazard when properly used in the recommended application, and when good standards of industrial and personal hygiene are maintained.

avoid contact with eyes, skin, or clothing. Use impervious gloves with used oil. after skin contact, wash immediately with soap and water.

For further guidance on product Health & Safety, refer to the appropriate Shell Material Safety Data Sheet or visit www.epc.shell.com.

Protect the Environment: take used oil to an authorized collection point. Do not discharge into drains, soil or water.

Advice: advice on applications not covered in this leaflet may be obtained from your Shell Lubricants Representative.

For more information, contact your local Shell Lubricants Representative or visit www.RotELLA.com.

The term "Shell Lubricants" collectively refers to the companies of Royal Dutch Shell plc that are engaged in the lubricants business.



Shell ROTELLA®
Energized Protection



SHELL RotELLA® **t** tRiple pRoteCtion®
TRIPLE ACTION HELPS CONTROL • WEAR • DEPOSITS • EMISSIONS

ABOUT ENERGIZED PROTECTION

You need to know your oil will protect your engine under all driving conditions. no matter how hot, cold, steep, dusty, muddy or extended your operations, you demand protection.

the energized protection of Shell Rotella® heavy duty diesel engine oils provides protection in three critical areas:

- 1. **Acid control** — helps protect against corrosion from acids formed as fuel burns and as the oil ages
- 2. **Deposit control** — helps keep engine clean for optimum performance and long life
- 3. **Wear control** — helps keep moving metal engine surfaces apart for long life

Shell Rotella® **t** triple protection® oils provide triple action to help control wear, deposits and emissions to continuously adapt to the needs of your engine for protection in on- and off-highway applications.

It meets or exceeds apl CJ-4 requirements, and is designed to provide extra performance. Shell Rotella® **t** triple protection® performs well in both older and new engines.

- **Up to 38% lower wear** in over **50 million miles of on- and off-road testing** in late-model engines*
- **Up to 22% less iron wear than Shell Rotella® **t**3 SAE 15W-40**
- **On average 50%+ lower wear** in seven key industry tests*
- **30% increase in active ashless chemistry** to protect against deposits and sludge*
- Designed to **optimize after-treatment service life** in systems on 2007 and newer trucks

**Range of 27%-88% *Compared to Shell Rotella® T CI-4 PLUS*

PROTECTIVE POWER

Using modern multi-component chemistry, Shell Rotella® **t** triple protection® gives all-around protection for turbo- and non-turbocharged engines alike.

RELATIVE PROteCtion	PROTECTIVE POWER			
	acid/Corrosion	Dirt & Deposits	Wear	exhaust Filters
Shell Rotella® t Triple Protection® triple action Helps Control: ■ Wear ■ Deposits ■ emissions				
Shell Rotella® t 3 CJ-4 ■ Maintenance Saving				
Shell Rotella® t CI-4 PLUS ■ Reliable Lubrication				

SPECIFICATIONS AND APPROVALS

SAE VISCOSITY GRADE	SAE VISCOSITY GRADE	
	15W-40	10W-30
API CJ-4, CI-4 PLUS, CI-4, CH-4, CF, SM, SL, SJ, SH; ACEA E9, E7; JASO DH-2, MA; Caterpillar ECF-1A, ECF-2, ECF-3; Cummins CES 20081; DDC 93K218; Deutz DQC III-05; MACK EO-O Premium Plus; Ford WSS-M2C171-E; MAN 3275; MB Approval 228.31; MTU Category 2; Renault Trucks RLD-3; Volvo VDS-4		
API CJ-4, CI-4 PLUS, CI-4, CH-4, CF, SM, SL, SJ, SH; Caterpillar ECF-2, ECF-3; Ford WSS-M2C171-E		

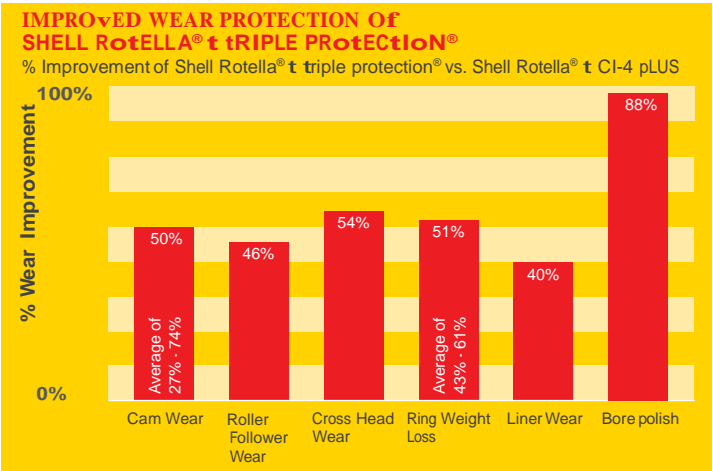


TRIPLE PROTECTION® TECHNOLOGY

triple protection® technology builds on the traditional strengths of wear protection and engine cleanliness in Shell Rotella® t, but it also protects diesel particulate filters (DpFs) against buildup of harmful deposits. and it provides outstanding viscosity control with exceptional product durability. this technology has been **proven in over 50 million miles of durability testing**.


ENERGIZED PROTECTION AGAINST WEAR

Proven in the lab: Shell Rotella® t triple protection® oils provide on average **50%* lower wear in industry-recognized engine tests**. In seven out of seven tests designed to measure wear in six key areas of the engine, there was significantly improved wear protection (see chart). Maximum wear merits demonstrated in Cummins ISM engine test (1400 out of 1400). *Range of 27% - 88%




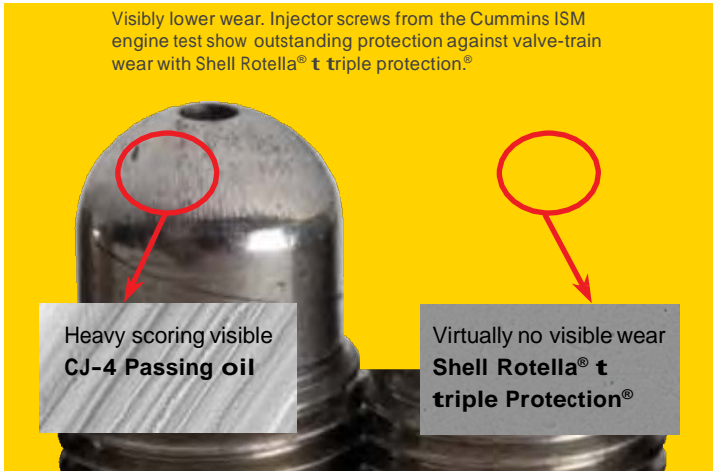
Proven on the road: Just as important as any lab test, Shell Rotella® t triple protection® has proven itself where our customers say it matters most – on the road. In **50 million miles of on-highway and off-road testing** with some of our leading fleet customers, this formulation has demonstrated significantly improved wear protection. there was significantly lower wear on the road: Up to **38% less iron wear** than Shell Rotella® t CI-4 PLUS Sae 15W-40 and up to **22% less iron wear** than Shell Rotella® t3 Sae 15W-40 CJ-4.

Camshaft from 2006 DDC Series 60 with 599,434 miles on Shell Rotella® T Triple Protection® 15W-40




Cylinder liner from 2006 Caterpillar C-15 with 664,608 miles on Shell Rotella® T Triple Protection® 15W-40






Camshaft bearings from 2006 DDC Series 60 with 546,132 miles on Shell Rotella® T Triple Protection® 15W-40



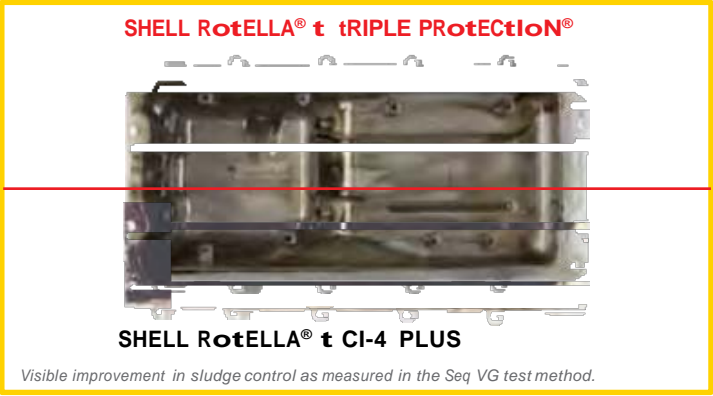
Lower cam bearings



ENERGIZED PROTECTION AGAINST DEPOSITS

the performance benefits of the unique combination of dispersants and detergents, boosted by the use of the dual-function additive component, are seen in **enhanced engine cleanliness and viscosity control** compared to previous-generation oils (apl CI-4 PLUS).

Deposit and sludge control: Our formula contains more dispersant molecules to control sludge and more antioxidant molecules to control deposits, as demonstrated in the laboratory and in the field.

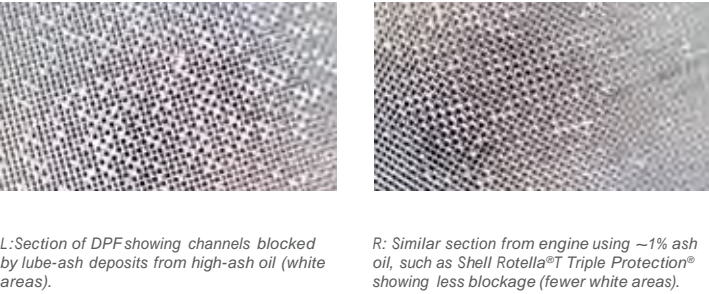


ENERGIZED PROTECTION AGAINST EMISSIONS

Shell Rotella® t triple protection® helps control vehicle emissions in two ways: 1) by reducing the rate of lubricant-related DpF blockage compared to apl CI-4 PLUS oils, and 2) by virtue of the improved wear and exceptional cleanliness, helping engines maintain efficient combustion. Minimizing DpF blockage also helps maintain fuel economy, thus further helping control exhaust-gas emissions.

Piston cleanliness: Our triple protection® technology features a unique, exclusive detergent system, specifically **designed to control piston deposits** in the hotter environments of late-model engines, as well as provide exceptional piston cleanliness in older engines.

Improved cleanliness: In the Caterpillar 1R engine test, Shell Rotella® t triple protection® shows clear visible improvements compared to previous-generation oils.



Shell Rotella® T5 Synthetic Blend Technology



Shell RoTella® T5 SynTheTic Blend Technology

- Shell Rotella® T5 10W-30 Synthetic Blend Technology is an innovative heavy duty engine oil developed to:
 - Deliver fuel-economy savings
 - Extended-drain capability,
 - Enhance engine cleanliness
 - Provide excellent wear protection
- Features proprietary additive technology for increased compatibility with the latest exhaust-emissions control systems
- Shell Rotella® T5 Synthetic Blend Technology SAE 10W-30 meets some of the most stringent heavy duty engine oil specifications globally
- Extend Starter and Battery Life¹
 - Shell Rotella® T5 10W-30 can help extend starter and battery life compared to SAE 15W-40, particularly in colder climates

Meets/exceeds oeM/industry requirements

Performance	Rotella® T5 10W-30
API CJ-4	✓
ACEA E9	✓
JASO DH-2	✓
Caterpillar ECF-3, ECF-2	✓
Cummins CES 20081	✓
DDC 93K218	✓
Mack EO-O	✓
Premium Plus 07	✓
MAN 3275	✓
MB Approved 228.31	✓
MTU Category 2	✓
Renault RDL-3	✓
Volvo VDS-4	✓

Shell RoTella® T5 FUEl econoMY SaVingS

- Shell continues to be in the forefront of fuel economy lubricants development. Shell has conducted extensive field trials that simulate city and highway driving patterns²
- Shell Rotella® T5 Synthetic Blend Technology 10W-30 delivered fuel economy savings of up to 1.6%
- These fuel-economy savings can help lower operation and maintenance costs.
- Annual Fuel Savings could be up to \$1,134 per truck
 - Up to 1.6% Annual fuel savings
 - At 120,000 miles per year
 - At 6.5 Miles Per Gallon
 - At \$3.90 Diesel Per Gallon

Note: As all equipment and drivers are unique, your savings may vary.



Why USe Shell RoTella® T5 10W-30?

- Fuel-Economy Savings of Up to 1.6%
- Excellent Protection against Acids, Deposits and Wear
- Provides exceptional piston cleanliness and sludge control
- Compatible with all modern engine emissions systems
- Carries all OEM Engine oil specification approvals
- Extend Battery and Starter Life

hoW do i aSk dRiVeRS iF They aRe inTeReSted in a Shell RoTella® T5 10W-30 oil change?

- Are you interested in potentially saving \$1,100 a year on fuel costs by changing your engine oil to Shell Rotella® T5 synthetic blend?
- Did you know that Shell Rotella® T5 10W-30 meets all OEM engine oil specifications?



¹ SwRI low-temperature pumpability study at -30°F

² Shell Rotella® T5 10W-30 grade as demonstrated in 2009 on-road medium duty truck field testing highway cycles compared to Shell Rotella® Triple Protection® 15W-40



Shell Material	UoM	# Per Pallet
9404206021 : Rotella ELC Pre-dilu_6*1ugl_A0II	6*1ugl	35
550022522 : Rotella ELC Pre-dilu_1*55ugl_A0II	1*55ugl	4
550026252 : Rotella Ultra ELC 50_6*1ugl_A0II	6*1ugl	35
9401006021 : Shellzone_6*1ugl_A0II	6*1ugl	35
9406706021 : Shellzone AF/C 50/50_6*1ugl_A0II	6*1ugl	35
550041916 : Pzl Platinum LVMVATF_6*1qt_A0II	6*1qt	125
550019921 : RotellaT6 5W40CJ4_3*1ugl_A0II	3*1ugl	75
550027755 : Spirax S5 ATF X_12*1qt_A0U5	12*1qt	84
550019913 : RotellaTTriP15W40CJ4_3*1ugl_A0II	3*1ugl	75
550019916 : RotellaTTriP15W40CJ4_1*5ugl_A0II	1*5ugl	42
550032647 : Spirax S6 ATF A295_1*5ugl_A1WJ	1*5ugl	42
550027653 : Spirax S3 ATF MD3_12*1qt_A0U5	12*1qt	84
550022382 : Rotella Ultra ELC 50_1*55ugl_A0II	1*55ugl	4
550019899 : RotellaT5 10W30 CJ4_1*55ugl_A0II	1*55ugl	4
550019908 : RotellaT5 10W30 CJ4_3*1ugl_A0II	3*1ugl	75
550019918 : RotellaTTriP15W40CJ4_1*55ugl_A0II	1*55ugl	4
550032968 : Spirax S6 ATF A295_1*55ugl_A1WJ	1*55ugl	4
550019905 : RotellaTTriP15W40CJ4_12*1qt_A0II	12*1qt	84
550026903 : Spirax S6 GME 50_1*16ugl_A1WJ	1*16ugl	9
550026914 : Spirax S6 AXRME75W90_1*16ugl_A1WJ	1*16ugl	9
550026919 : Spirax S3 ATF MD3_1*55ugl_A1WJ	1*55ugl	4
550026920 : Spirax S3 ATF MD3_1*5ugl_A1WJ	1*5ugl	42
550026938 : Spirax S5 ATF X_1*55ugl_A1WJ	1*55ugl	4
550026189 : Tellus S2 V 32_1*5ugl_A1WJ	1*5ugl	42
550022381 : RotellaUltraELC Conc_1*55ugl_A0II	1*55ugl	4
550022525 : Shellzone AF/C 50/50_1*55ugl_A0II	1*55ugl	4
550022425 : Spirax HD 80W-90_1*35lb_A0II	1*35lb	42
550026939 : Spirax S6 AXME80W140_1*5ugl_A1WJ	1*5ugl	42
550024730 : RotellaUltraELC Conc_6*1ugl_A0II	6*1ugl	35
550033054 : Spirax S6 ATF A295_3*1ugl_A0U5	3*1ugl	75
550042065 : PZL Dex/MERC ATF_6*1qt_A0II	6*1qt	125
550026918 : Spirax S6 AXRME75W90_1*55ugl_A1WJ	1*55ugl	4
550027616 : Full Form AF SCA_6*1ugl_A0II	6*1ugl	35
550027617 : Full Form SCA 50-50_6*1ugl_A0II	6*1ugl	35
550024074 : FS 5W30 MO GF5_12*1qt_A0II	12*1qt	84
550024080 : FS 5W20 MO GF5_12*1qt_A0II	12*1qt	84
550024081 : FS 10W30 MO GF5_12*1qt_A0II	12*1qt	84
550019892 : RotellaT1 40 CFCF2_1*5ugl_A0II	1*5ugl	42
550022521 : Rotella ELC Concentr_1*55ugl_A0II	1*55ugl	4
9404106021 : Rotella ELC Concentr_6*1ugl_A0II	6*1ugl	35
550019911 : RotellaT3 15W40CJ4_1*55ugl_A0II	1*55ugl	4
9404006021 : Dexcool ELC AF/C_6*1ugl_A0II	6*1ugl	35
550042075 : Pzl Platinum HM ATF_6*1qt_A0II	6*1qt	125



Shell Lubricants



A Toyota Group Company

Shell Oil Hino Part Number	Part Description
SO-500004736	ROTELLA T5 10W30 CJ4 BULK A03Q
SO-500004741	ROTELLATTRIP15W40CJ4 BULK A03Q
SO-500005285	ROTELLA ELC PRE-DILU BULK A1SJ
SO-500005520	FS 5W30 MO GF5 BULK A03Q
SO-500005607	TELLUS S2 M 46 BULK
SO-500005761	SPIRAX S3 ATF MD3 BULK A03Q
SO-500005764	TELLUS S2 M 32 BULK A03Q
SO-500005766	TELLUS S2 V 32 BULK A03Q
SO-500005773	HYDRAULIC S1 M 46 BULK A03Q
SO-5066315	SHELLZONE MV AF/C 6*1UGL A0II
SO-5066325	SHELLZONE MV AF/C 50 6*1UGL
SO-5080660	ATF 134 12*1QT A0II
SO-550019856	ROTELLA T1 30 CFCF2 1*55UGL
SO-550019857	ROTELLAT1 30 CFCF2 3*1UGL A0II
SO-550019858	ROTELLAT1 40 CFCF2 3*1UGL A0II
SO-550019860	ROTELLA T1 40 CFCF2 1*55UGL
SO-550019891	ROTELLAT1 30 CFCF2 1*5UGL A0II
SO-550019892	ROTELLAT1 40 CFCF2 1*5UGL A0II
SO-550019893	ROTELLAT1 50 CFCF2 1*5UGL A0II
SO-550019897	ROTELLA T5 10W40 CJ4 1*55UGL
SO-550019899	ROTELLA T5 10W30 CJ4 1*55UGL
SO-550019901	ROTELLAT6 5W40CJ4 1*55UGL A0II
SO-550019903	ROTELLAT1 30 CFCF2 12*1QT A0II
SO-550019905	ROTELLA TTRIP 15W40 CJ4 12*1QT
SO-550019906	ROTELLA TTRIP 10W30 CJ4 12*1QT
SO-550019908	ROTELLA T5 10W30 CJ4 3*1UGL
SO-550019911	ROTELLA T3 15W40 CJ4 1*55UGL
SO-550019913	ROTELLA TTRIP 15W40CJ4 3*1UGL
SO-550019914	ROTELLA T6 5W40CJ4 6*1QT A0II
SO-550019916	ROTELLA TTRIP 15W40CJ4 1*5UGL
SO-550019918	ROTELLA TTRIP 15W40CJ4 1*55UGL
SO-550019919	ROTELLATTRIP 15W40CJ4 2*2.5UGL
SO-550019920	ROTELLA TTRIP 10W30CJ4 3*1UGL
SO-550019921	ROTELLA T6 5W40CJ4 3*1UGL A0II
SO-550022382	ROTELLA ULTRA ELC 50 1*55UGL
SO-550022424	SPIRAX HD 80W-90 1*120LB A0II
SO-550022425	SPIRAX HD 80W-90 1*35LB A0II
SO-550022426	SPIRAX HD 85W-140 1*120LB A0II
SO-550022520	DEXCOOL ELC AF/C 1*55UGL A0II
SO-550022521	ROTELLA ELC CONCENTR 1*55UGL
SO-550022522	ROTELLA ELC PRE-DILU 1*55UGL
SO-550022525	SHELLZONE AF/C 50/50 1*55UGL
SO-550022527	DIESELRDY SCAAF/C50 1*55UGL
SO-550022714	TELLUS PREMIUM 32 3*1UGL A0II
SO-550024064	FS SYNTHETIC 5W30 GF5 6*1QT
SO-550024066	FS 20W50 MO SN 1*55UGL A0II
SO-550024069	FS 10W40 MO SN 12*1QT A0II
SO-550024073	FS 5W30 MO GF5 1*55UGL A0II
SO-550024074	FS 5W30 MO GF5 12*1QT A0II
SO-550024080	FS 5W20 MO GF5 12*1QT A0II
SO-550024081	FS 10W30 MO GF5 12*1QT A0II
SO-550024730	ROTELLA ULTRA ELC CONC 6*1UGL
SO-550026189	TELLUS S2 V 32 1*5UGL A1WJ
SO-550026252	ROTELLA ULTRA ELC 50 6*1UGL
SO-550026253	TELLUS S2 V 32 1*55UGL A1WJ
SO-550026688	TELLUS S2 M 46 1*55UGL A1WJ
SO-550026689	TELLUS S2 M 46 1*5UGL A1WJ
SO-550026693	TELLUS S2 M 32 1*55UGL A1WJ



Shell Lubricants



A Toyota Group Company

Shell Oil Hino Part Number	Part Description
SO-550026694	TELLUS S2 M 32 1*5UGL A1WJ
SO-550026735	TELLUS S2 M 68 1*5UGL A1WJ
SO-550026806	GADUS S2 V220 0 1*18KG A1WJ
SO-550026815	GADUS S2 V220 2 1*50KG WL A1WJ
SO-550026838	GADUS S3 A1000XD 2 1*18KG A1WJ
SO-550026853	GADUS S3 V220C 2 1*18KG A1WJ
SO-550026854	GADUS S3 V220C 2 1*50KG WL
SO-550026855	GADUS S3 V220C 1 1*50KG WL
SO-550026863	GADUS S3 V460 1.5 1*50KG WL
SO-550026891	SPIRAX S4 TXM 1*5UGL A1WJ
SO-550026896	SPIRAX S4 CX 50 1*5UGL A1WJ
SO-550026902	SPIRAX S4 TXM 1*55UGL A1WJ
SO-550026903	SPIRAX S6 GME 50 1*16UGL A1WJ
SO-550026905	SPIRAX S6 GME 50 1*5UGL A1WJ
SO-550026907	SPIRAX S4 CX 50 1*55UGL A1WJ
SO-550026909	SPIRAX S6 GME 50 1*55UGL A1WJ
SO-550026914	SPIRAX S6 AXRME75W90 1*16UGL
SO-550026915	SPIRAX S6 AXRME75W90 1*5UGL
SO-550026918	SPIRAX S6 AXRME75W90 1*55UGL
SO-550026919	SPIRAX S3 ATF MD3 1*55UGL A1WJ
SO-550026920	SPIRAX S3 ATF MD3 1*5UGL A1WJ
SO-550026931	SPIRAX S6 AXME80W140 1*16UGL
SO-550026939	SPIRAX S6 AXME80W140 1*5UGL
SO-550026940	SPIRAX S6 AXME80W140 1*55UGL
SO-550026999	PSF 12*12OZ A0II
SO-550027557	GADUS S3 V220C 1 10*0.4KG A1WJ
SO-550027558	GADUS S3 V220C 2 10*0.4KG A1WJ
SO-550027617	FULL FORM SCA 50-50 6*1UGL
SO-550027618	FULL FORM AF SCA 1*55UGL A011
SO-550027619	FULL FORM SCA 50-50 1*55UGL
SO-550027631	GADUS S2 V220 2 10*0.4KG A1WJ
SO-550027637	GADUS S3 V220C 2 1*180KG WL
SO-550027645	GADUS S2 V460A 2 10*0.4KG A1WJ
SO-550027646	GADUS S1 V160D 2 10*0.4KG A1WJ
SO-550027653	SPIRAX S3 ATF MD3 12*1QT A0U5
SO-550027657	GADUS S3 V460D 2 10*0.4KG A1WJ
SO-550027745	SPIRAX S6 AXRME75W90 12*1QT
SO-550028587	SPIRAX S3 ATF MD3 1*16UGL A1WJ
SO-550029714	GADUS S2 V220 2 1*180KG WL
SO-550032647	SPIRAX S6 ATF A295 PAILS
SO-550032968	SPIRAX S6 ATF A295 DRUMS
SO-550033054	SPIRAX S6 ATF A295 1*3UGL
SO-5921000055	SPIRAX HD 80W-90 1*400LB A0II
SO-5921012091	SPIRAX HD 80W-90 12*1QT A0II
SO-5921200055	SPIRAX HD 85W-140 1*400LB A0II
SO-5921212091	SPIRAX HD 85W-140 12*1QT A0II
SO-5921235203	SPIRAX HD 85W-140 1*35LB A0II
SO-7046002120	RETINAX TL 00 1*120LB WL A0II
SO-7046035203	RETINAX TL 00 1*35LB A0II
SO-9401000055	SHELLZONE 1*55UGL A0II
SO-9401006021	SHELLZONE 6*1UGL A0II
SO-9404006021	DEXCOOL ELC AF/C 6*1UGL A0II
SO-9404106021	ROTELLA ELC CONCENTR 6*1UGL
SO-9404206021	ROTELLA ELC PRE-DILU 6*1UGL
SO-9404306031	ROTELLA ELC EXTENDER 6*1QT
SO-9406706021	SHELLZONE AF/C 50/50 6*1UGL
SO-9407006021	DEXCOOL AF/C 50/50 6*1UGL A0II