

 Connection offline

Field campaign

Topic	Battery monitor control unit – software update (SC13/21)
Market area	Worldwide Bentley (1WBE)
Brand	Bentley
Transaction No.	2035952/4
Campaign number	E798
Note	
Type	Workshop Campaign
US code	

Vehicle data

Continental range and Spur 12MY onwards

Sales types

Type	MY	Brand	Designation	Engine code	Gearbox code	Final drive code
3931*	2012	E		*	*	*
3931*	2013	E		*	*	*
3931*	2014	E		*	*	*
3932*	2012	E		*	*	*
3932*	2013	E		*	*	*
3932*	2014	E		*	*	*
3941*	2012	E		*	*	*
3941*	2013	E		*	*	*
3942*	2012	E		*	*	*
3942*	2013	E		*	*	*
3942*	2014	E		*	*	*
3W2*	2012	E		*	*	*
3W2*	2013	E		*	*	*
3W7*	2012	E		*	*	*
3W7*	2013	E		*	*	*
3W7*	2014	E		*	*	*
3W8*	2012	E		*	*	*
4W21*	2014	E		*	*	*

Chassis numbers

Manufacturer	Filler	Type	Filler	MY	Factory	From	To	Prod from	Prod to
SCB	***	**	*	*	*	000001	090231		

Control units

Diagnostic address	Software part number	Software version	Hardware part number	Hardware version
71 - Battery				

Charger	3W3.915.181.A	0540	3W3.915.181.A	H04
---------	---------------	------	---------------	-----

Documents

Document name
master.xml

 Connection offline

Workshop Campaign E798

Transaction No.: **2035952/4**

Battery monitor control unit – software update (SC13/21)

Notes

 **Repair instructions**

Technical background

The threshold for a voltage monitor diagnostic within the battery monitor control unit (J367) has been found to be too sensitive. If this diagnostic is triggered powertrain CAN activity is restricted resulting in reduced functionality of the park brake release switch

Remedy

Revised software has been developed and introduced from VIN SCBEA5ZAXEC090231. This software can be loaded into the control unit by using the attached Software Version Management (SVM) code via the SVM system

Customer notification

Customers do not need to be informed directly of this campaign. Please ensure that all affected vehicles are checked and repaired during a service visit. You should also inform your new and used car sales department so that the vehicles affected can be checked and, if necessary, repaired immediately (and not just before sale)



Before Carrying out this Campaign check to clarify if the battery control module with the part number of 3W3 915 181B has been previously fitted (Refer to Check section), should the vehicle have had the part fitted this Campaign is not applicable, please refer to the Warranty accounting instruction section of this procedure for labour claim instructions to allow the campaign applicability to be removed for the applicable VIN

Warranty accounting instructions

For first generation Continental family, ie Supersports, Speed and Continental Flying Spur derivatives

Warranty Type 710 or 790
 Labour Operation Code 01 29 00 43
 Damage Service Number E798
 Damage Code 00 66
 Criteria ID 01
 Time 50 TU

For New Continental family and Flying Spur

Warranty Type 710 or 790
 Labour Operation Code 01 29 00 05
 Damage Service Number E798
 Damage Code 00 66
 Criteria ID 01

Time 50 TU

Time to be claimed to remove the campaign from the system should 3W3 915 181B be fitted

Warranty Type 710 or 790
Labour operation code 01 29 00 01
Damage Service Number E798
Damage Code 00 66
Criteria ID 01
Time 10 TU

Genuine parts



Before Carrying out this Campaign check to clarify if a battery monitor control unit with the part number of 3W3 915 181B has been previously fitted (Refer to Check section), should the vehicle have had the part fitted this Campaign is not applicable, please refer to the Warranty accounting instruction section of this procedure for labour claim instructions to allow the campaign applicability to be removed for the applicable VIN

Parts supply

N/A

Parts despatch control

N/A

Repair instructions



Notes

Technical background

The threshold for a voltage monitor diagnostic within the battery monitor control unit (J367) has been found to be too sensitive. If this diagnostic is triggered powertrain CAN activity is restricted resulting in reduced functionality of the park brake release switch

Check

If the vehicle is not already listed as repaired in the 'Repair History' (ElsaPro), check the vehicle for the campaign identification mark, (see Figure 11), if this is not visible carry out the required work in accordance with these instructions

Genuine parts




Before Carrying out this Campaign check to clarify if a battery monitor control unit with the part number of 3W3 915 181B has been previously fitted (Refer to Check section), should the vehicle have had the part fitted this Campaign is not applicable, please refer to the Warranty accounting instruction section of this procedure for labour claim instructions to allow the campaign applicability to be removed for the applicable VIN

Tools



VAS 5903 – or a charger with the same specification must be used

Work

1. Ensure a suitable battery charger (VAS 5903 – or a charger with the same specification) is correctly connected to the vehicle electrical system for the duration of this procedure – Refer to workshop manual Rep.Gr 27 – Batteries to charge
2. Switch on ignition **IMPORTANT:** When performing software updates the ignition must never be switched on by using the start/stop switch in the centre console, Always insert the key into the ignition barrel to switch on the ignition
3. Connect the Bentley diagnostic tool VAS 5052A or later approved equipment, to the vehicle On Board Diagnostic (OBD) socket
4. Ensure you are connected to your on – line network – Broadband. Use a hardwire connection for software updates Bluetooth connections are not advised.
5. From the VAS diagnostic tool main desktop select Offboard Diagnostic Information System 

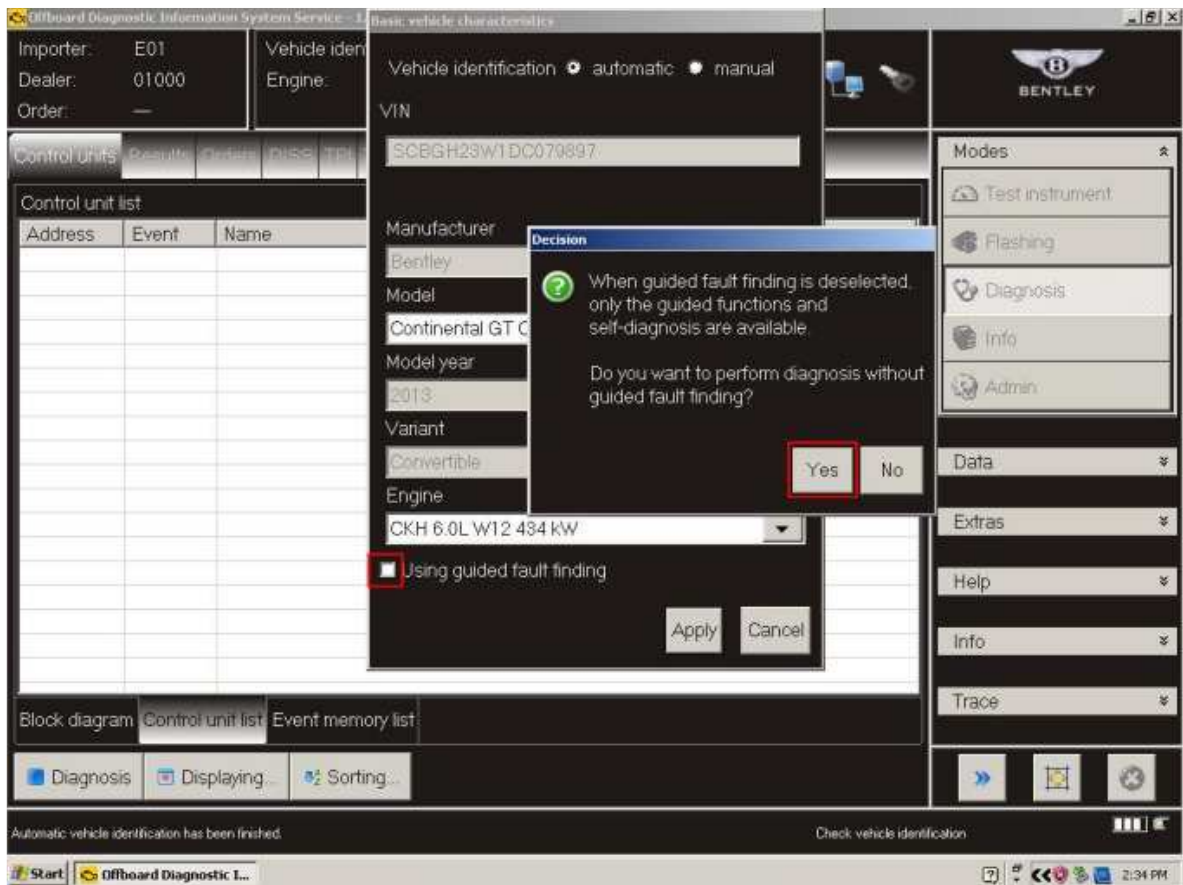


Figure 1

6. Select – Start diagnosis
7. Select – Model / Engine
8. Deselect Guided Fault Finding – remove tick from *Using guided fault finding* option – then select *Yes* at pop-up and *Apply* (see Figure 1)

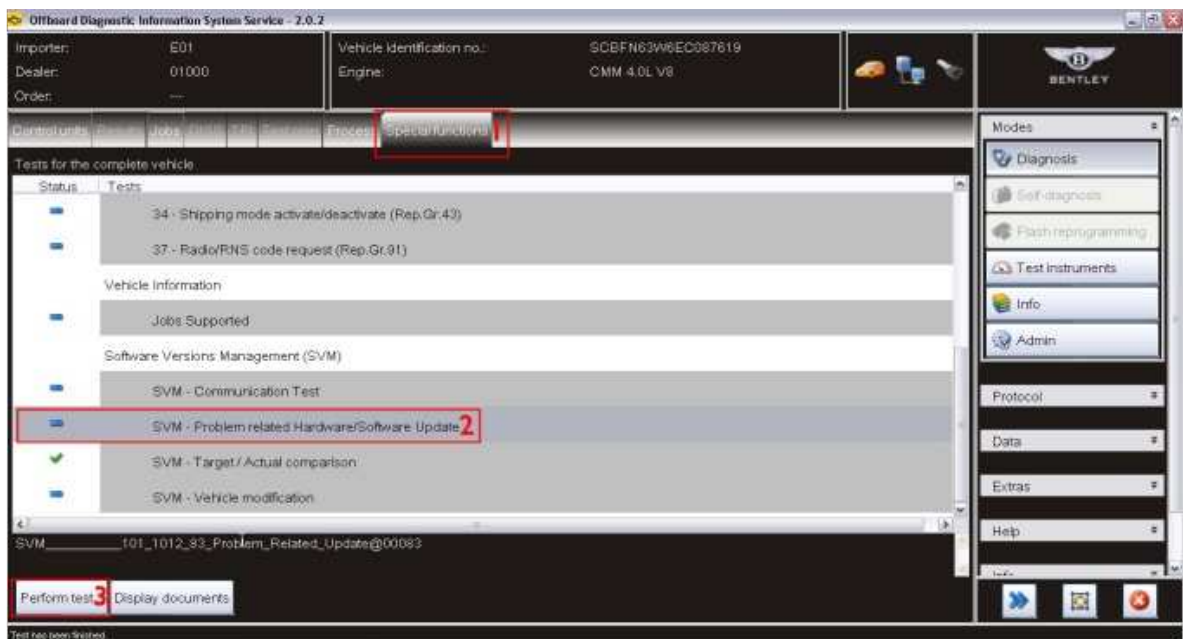


Figure 2

9. Select *Special functions* (1), Select *SVM – Problem related Hardware/Software Update* (2), Select

Perform test (3) (see Figure 2)

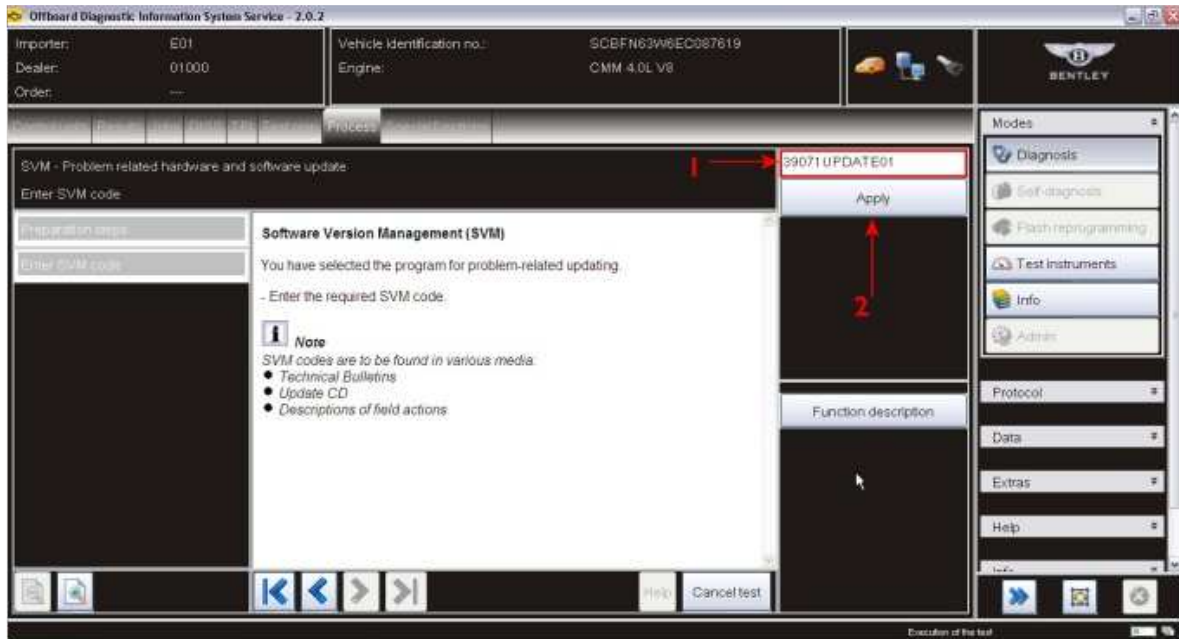


Figure 3

10. At SVM process screen reference the table below and enter the specific SVM code for the vehicle being worked and then *Apply* (2)

Vehicle type	SVM code to be used
Flying Spur	4W071UPDATE01
New Continental family	39071UPDATE01
Series one Continental family i.e. Supersports, Speed and Continental Flying Spur derivatives	3W071UPDATE01

11. Check you have entered the correct SVM code and select *Yes*

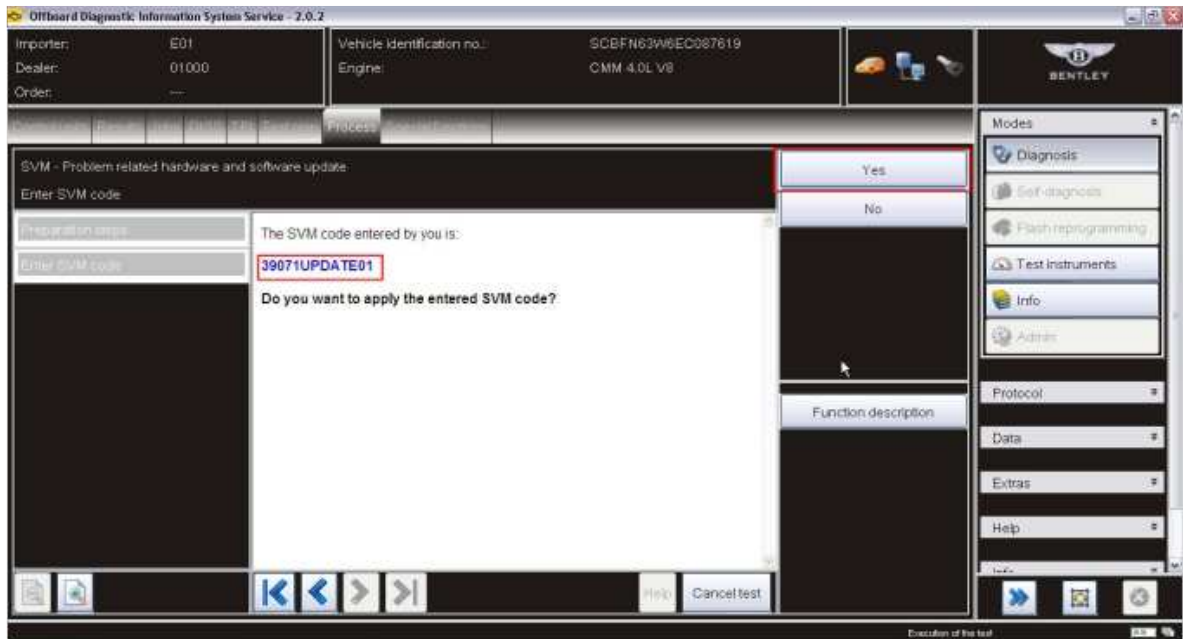


Figure 4

12. Ensure adequate vehicle battery voltage is maintained. If prompted enter your global user ID and password
13. Follow the on screen prompts to continue through the procedure

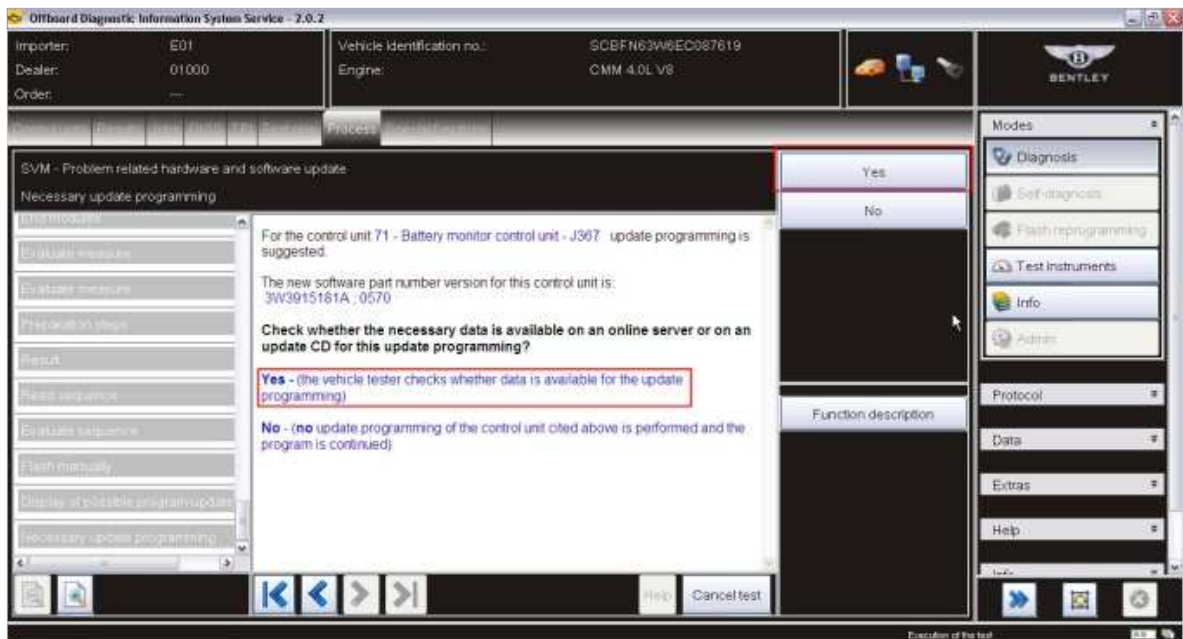


Figure 5

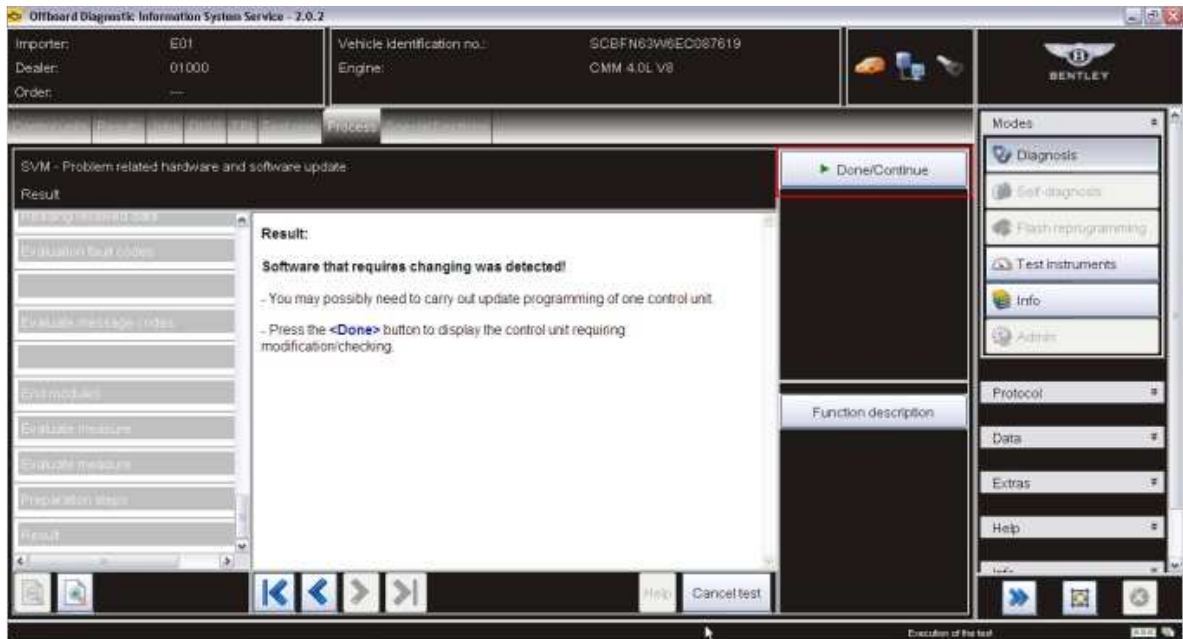


Figure 6

14. Once software is detected select *Done/Continue*

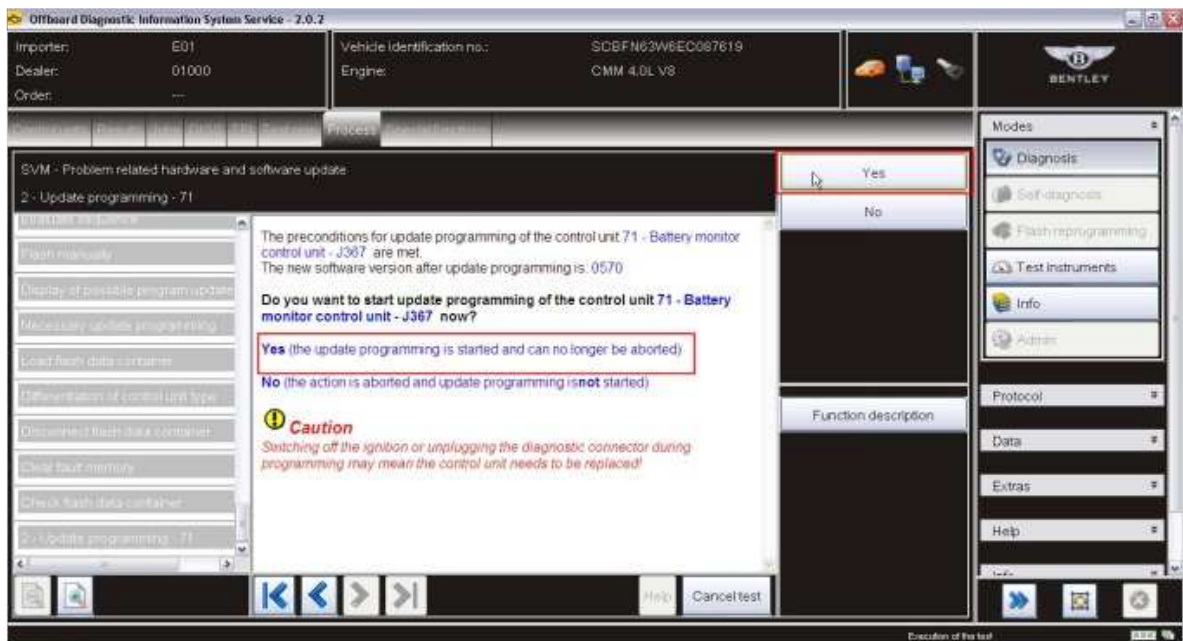


Figure 7

15. Select *Yes* to update Battery monitor control unit, a progress bar will be displayed during the update

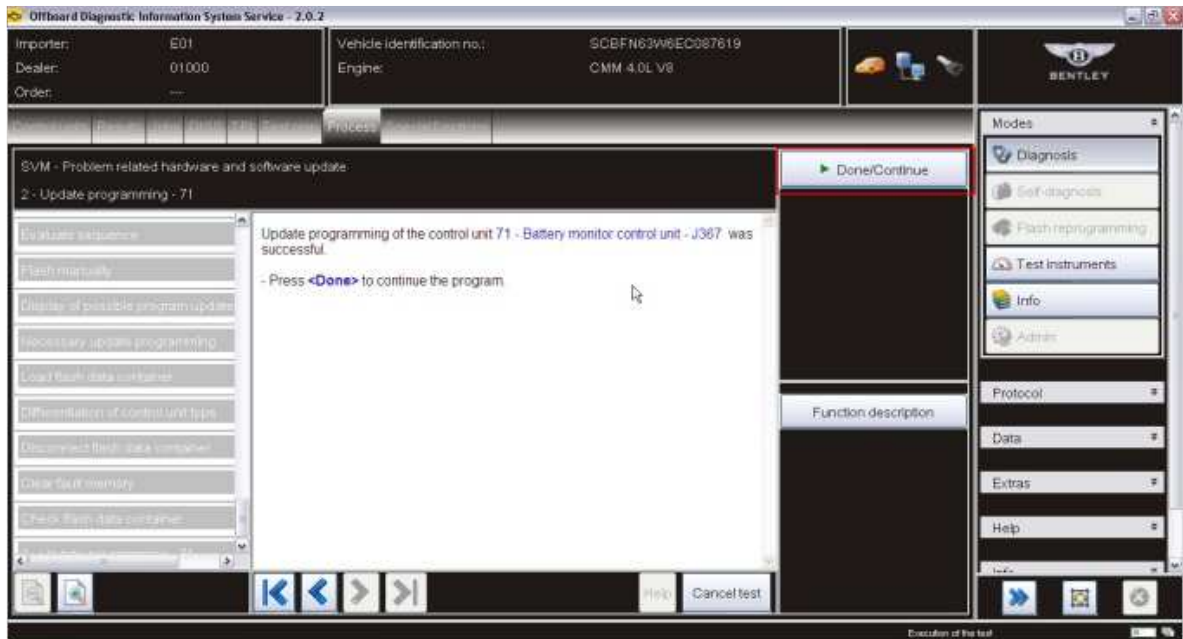


Figure 8

16. Once Done/Continue is selected at the successful programming screen then you are prompted to perform an ignition off/on cycle, to do this: FIRST press Done/Continue then at prompt turn ignition OFF, press Done/Continue then at prompt turn ignition ON
17. When statement *Calibration required changing was detected!* Is displayed press Done/Continue and follow on screen prompts to enable the calibration program to run to end and then *Exit* diagnostics
18. Use *Guided Fault Finding* in Offboard Diagnostic Information System to carry out a complete diagnostic sweep of the vehicle, clearing any fault codes generated as a result of performing this campaign. NOTE: Due to the fault codes induced as a result of this software update the vehicle ignition status will not be visible to the VAS tester during this initial guided fault finding control module sweep therefore click continue at ignitions status prompts.
19. When the *Guided Fault Finding* sweep has completed, when prompted to **Make a Target/Actual Comparison** you must Select Yes (Figure 9)

IMPORTANT NOTE:

A separate SVM Target/ Actual comparison is now required

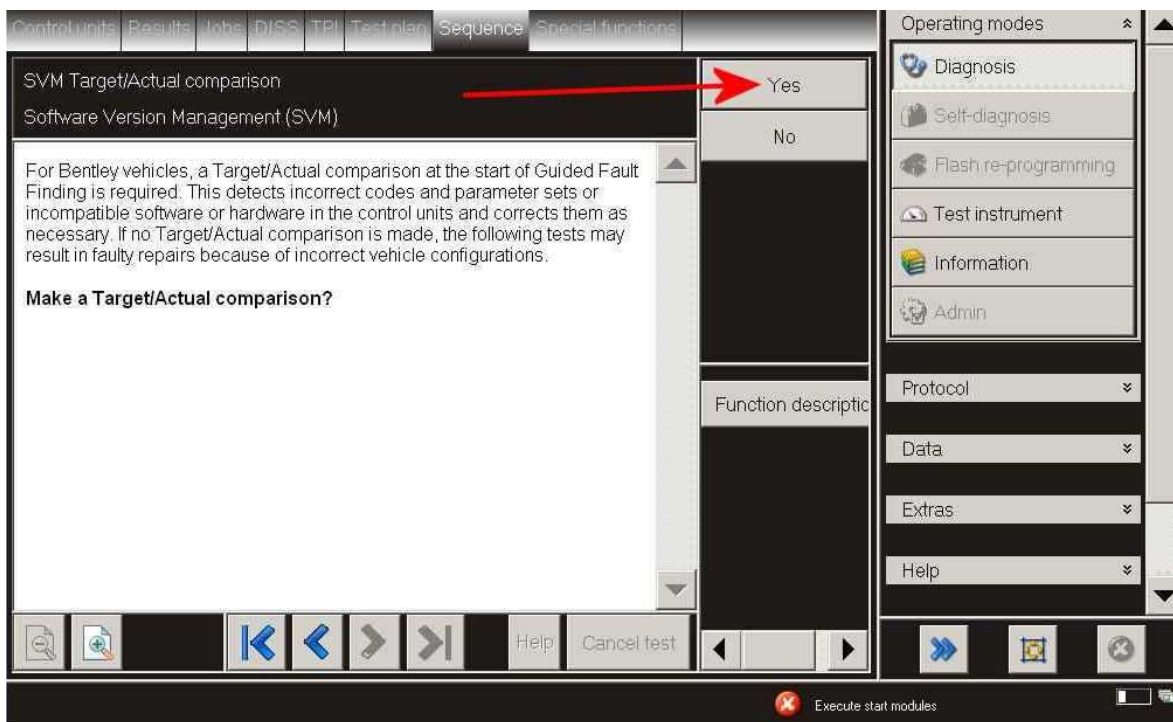


Figure 9

20. NOTE 2: It is possible that an engine or transmission fault code may require guided fault finding to be used directly in that specific control module to clear the fault code (see Figure 10)

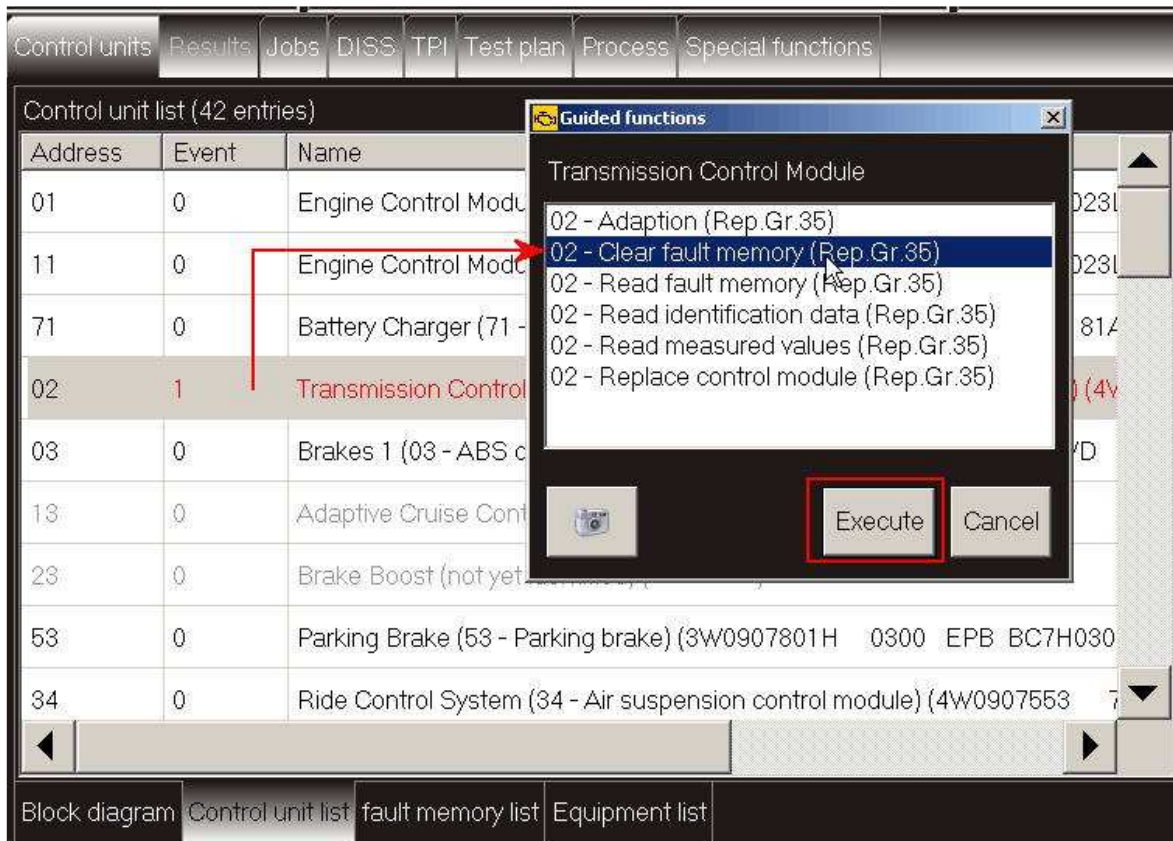


Figure 10

21. On completion apply a blue campaign completion mark (see Figure 11)

Identification



Figure 11

On completion apply a blue campaign completion mark to the boot mounted fuse box adjacent to the main system battery negative post (see Figure 11)

[▲ Repair instructions](#) [▲ Notes](#)