

Field campaign

| | |
|------------------------|--|
| Topic | New Continental GT V8T and New Continental GTC V8T - Oil filter by-pass valve (SC14/17) |
| Market area | Russische Föderation (5RU),China 796 VW Import Comp. Ltd (Vico), Beijing (6796),Russian Federation 935 Volkswagen Group RUS (6935),United Kingdom E01 Bentley UK (6E01),Germany E02 Bentley rest Europe (6E02),Australia E04 Bentley rest Asia and Australia (6E04),United States E05 Bentley USA and rest America (6E05),United Arab Emirates E06 Bentley Middle East and Africa (6E06) |
| Brand | Bentley |
| Transaction No. | 2038185/1 |
| Campaign number | EA17 |
| Note | |
| Type | |
| US code | |

Vehicle data

New Continental GT V8T and New Continental GTC V8T

Sales types

| Type | MY | Brand | Designation | Engine code | Gearbox code | Final drive code |
|------|------|-------|-------------|-------------|--------------|------------------|
| 39*2 | 2013 | E | | * | * | * |

Chassis numbers

| Manufacturer | Filler | Type | Filler | MY | Factory | From | To | Prod from | Prod to |
|--------------|--------|------|--------|----|---------|--------|--------|-----------|---------|
| SCB | * | 3W | * | D | * | 081596 | 084917 | | |
| SCB | * | ZA | * | D | * | 081596 | 084917 | | |

Documents

| Document name |
|---------------|
| master.xml |

-

Notes

▫ [Repair instructions](#)

Technical background

This procedure should be conducted during an applicable service interval in which both the engine oil and engine oil filter require replacing.

This procedure details the process which must be followed to determine correct fitment/presence of the oil filter pressure relief valve, there are three possible scenarios, as follows:

- I) The valve is fitted, and the orientation of the valve is correct
- II) The valve is fitted, however the orientation of the valve is incorrect
- III) The valve is not fitted

Remedy

This campaign must be carried out on all applicable vehicles to ensure all affected VIN's have all instructions within this procedure conducted.

Customer notification

Customers do not need to be informed directly of this campaign. Please ensure that all affected vehicles are checked and repaired during an applicable service visit in which both the engine oil and engine oil filter require replacement.

IMPORTANT: Whilst carrying out this campaign please check for any other outstanding workshop actions, please ensure that all relevant VIN related campaigns are conducted during the same workshop visit.

Warranty accounting instructions

Time to carry out initial check

| | |
|-----------------------|--|
| Warranty Type | 710 or 790 |
| Labour Operation Code | 17 26 19 99 *(for RO open date on or before 18 December 2014) 17 26 01 73 (for RO open date after 18 December 2014) |
| Damage Service Number | EA17 |
| Damage Code | 00 66 |
| Criteria ID | 01 |
| Time | 10 time units |

Time to carry out correct fitment of the oil filter housing by-pass valve

| | |
|-----------------------|---|
| Warranty Type | 710 or 790 |
| Labour Operation Code | 17 26 20 99 (for RO open date on or before 18 December 2014) 17 26 19 73 (for RO open date after 18 December 2014) |
| Damage Service Number | EA17 |
| Damage Code | 00 66 |
| Criteria ID | 01 |
| Time | 10 time units |

Genuine parts

| Description | Part Number | Quantity |
|--------------------------|--------------|----------|
| Oil filter by-pass valve | 079 103 765A | 1 |

▫ **The oil filter by-pass valve should only be ordered and fitted if the valve is not evident within the oil filter housing or the orientation of the valve is incorrect**

Parts supply

The required replacement parts should be ordered through your regional Bentley parts distribution centre.

Parts despatch control

Not applicable

Repair instructions

▫ [Notes](#)

Technical background

This procedure should be conducted during an applicable service interval in which both the engine oil and engine oil filter require replacing.

This procedure details the process which must be followed to determine correct fitment/presence of the oil filter pressure relief valve, there are three possible scenarios, as follows:

- I) The valve is fitted, and the orientation of the valve is correct
- II) The valve is fitted, however the orientation of the valve is incorrect
- III) The valve is not fitted

Check

If the vehicle is not already listed as repaired in the "Repair history" (in Elsa Pro), check the vehicle for campaign identification which is a yellow paint mark on the oil filter cap (Figure 7) if this is not visible carry out the required work in accordance with the instructions.

Genuine parts

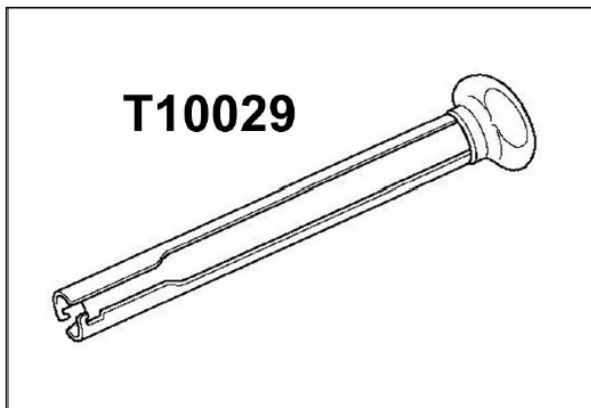
| Description | Part Number | Quantity |
|--------------------------|--------------|----------|
| Oil filter by-pass valve | 079 103 765A | 1 |

□

The oil filter by-pass valve should only be ordered and fitted if the valve is not evident within the oil filter housing or the orientation of the valve is incorrect

Tools

Assembly Tool T10029 is required if the oil filter by-pass valve requires fitment



Work

Section 1

1. Whilst the engine oil filter is removed during the service interval please check the following:

- Visually check the by-pass valve is correctly installed, the orientation of the oil filter by-pass valve should be fitted as shown in Figures 1 and 2, if the by-pass valve is fitted as shown no further action is required
- Once the oil filter is reassembled place a yellow paint mark on the oil filter cap as shown in Figure 7

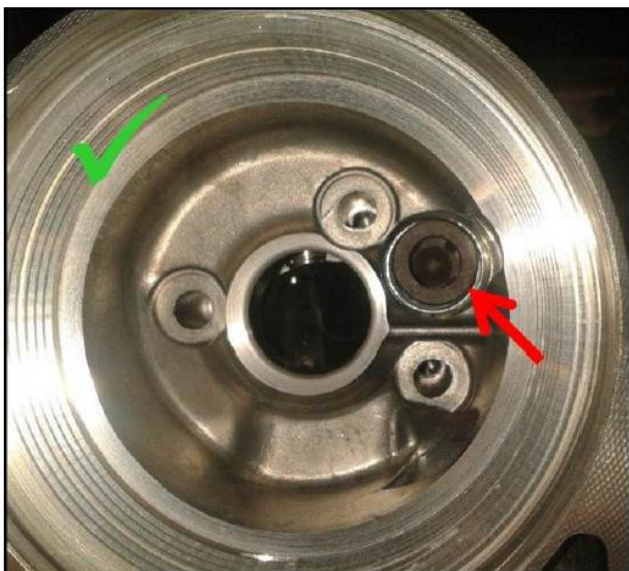


Figure 1

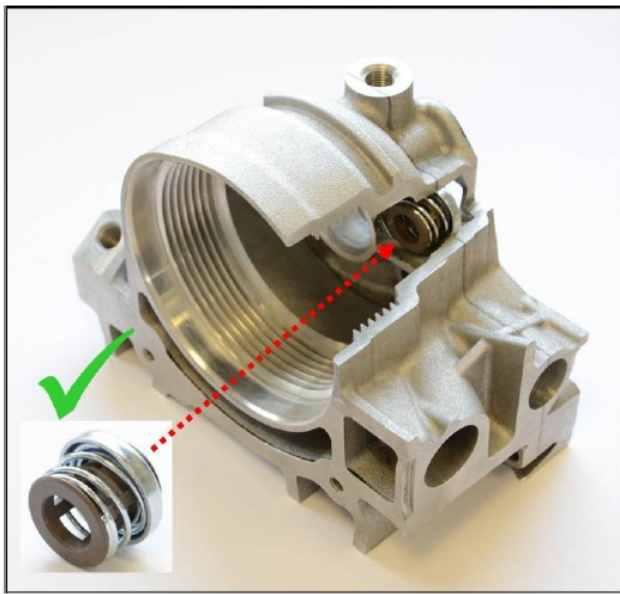


Figure 2

2. In the event that the orientation of the valve is incorrect as shown in Figures 3 and 4 or the valve is missing as Figure 5, please carry out Section 2



Figure 3

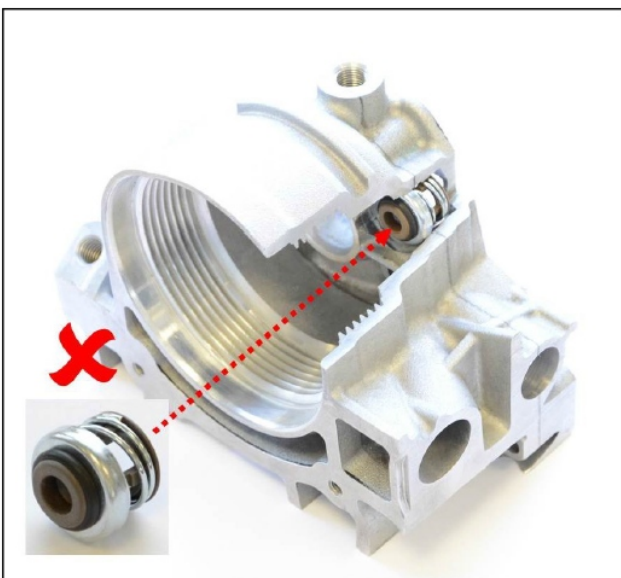


Figure 4

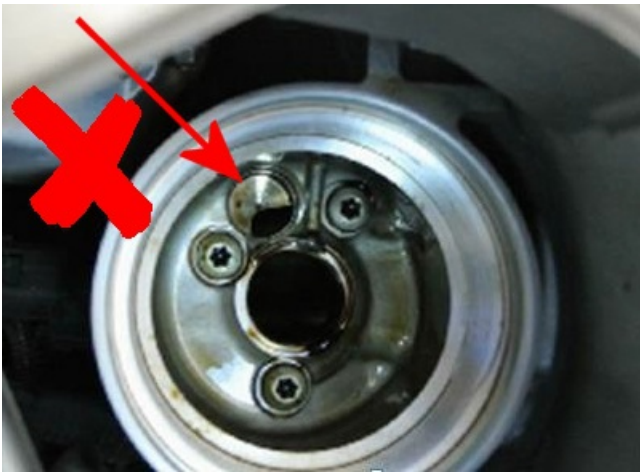


Figure 5

Section 2

1. To remove the existing valve, use a suitable hook/pliers to pull/remove the valve from oil filter housing



On removal of the valve you must wear safety glasses as the valve can break into separate parts upon removal, you must ensure that all pieces of the valve are removed before fitting the new part

2. Insert the new valve into the end of T10029 as shown Figure 6 ensuring correct orientation

TIP: Use a rubber mallet to tap in and fit the valve, the end of T10029 is made from hardened plastic



Figure 6

3. With extreme care using a rubber mallet fit the valve into the oil filter housing, ensure the valve is fully home and equally seated upon fitment

4. Once the oil filter is reassembled place a yellow paint mark on the oil filter cap as (Figure 7) to confirm the by-pass valve is now fitted

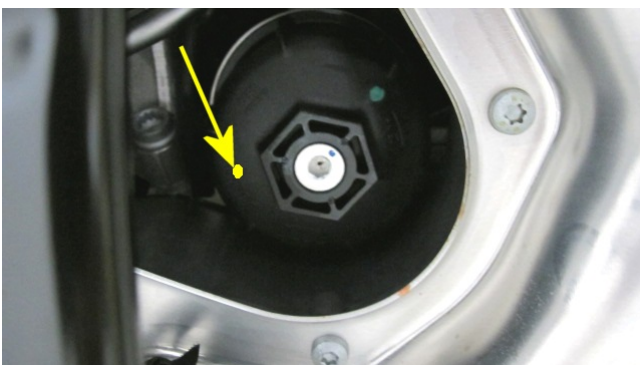


Figure 7

Identification

Yellow paint completion mark on the oil filter cap (Figure 7)

