

Side windows may make noises when closing and opening, or reverse direction when closing.

Topic number	LI67.30-P-055417
Version	4
Design group	67.30 Side windows
Date	07-08-2014
Validity	MODEL 166.8 Up to VIN end no.: L003467 Up to VIN end no.: M 003467 Up to VIN end no.: A 361392
Reason for change	Part number changed. Repair procedure changed.
Reason for block	

Complaint:

Side windows may make noises when closing and opening, or reverse direction when closing.

Cause:

On the front doors the lip may be folded over on the window guide rail below the beltline in the area of the B-pillar (see Pictures 1 and 2).

Consequence: Friction is too high and leads to noises.

Attachments	
File	Description
Bild 1.JPG	Area of window guide rail below beltline
Bild 2.JPG	Window guide rail lip folded over below beltline

Remedy:

Visually inspect whether the lip is folded over on the window guide rail.

- To do this, remove beltline trim strip.
- If the lip is folded over, the window guide rail must be replaced.

Important: For this complaint it is not permitted to replace the door module including the power window or power window motor.

Symptoms
Body / Glazing / Window lifting mechanism/window operation / Remains stationary
Body / Glazing / Window lifting mechanism/window operation / Does not run up
Body / Glazing / Window lifting mechanism/window operation / Stiff/sluggish
Body / Glazing / Window lifting mechanism/window operation / Opens by itself
Body / Glazing / Window lifting mechanism/window operation / Noise

Parts

Part number	ES1	ES2	Designation	Quantity	Note	EPC	Other ma- ke part
A 166 725 19 00			Guide rail for left front door	1		X	
A 166 725 20 00			Guide rail for right front door	1		X	

Work units				
Op. no.	Operation text	Time	Damage code	Note
			72D02 D6	
			72S02 D6	

WIS-References			
Document number	Title	Note	Allocation
AR72.12-P-1013GZ	Remove/install inner sealing rail for rear door		Remedy
AR72.10-P-1600GZ	Remove/install inner sealing rail		Remedy
AR72.12-P-1500GQ	Remove/install window guide rail for rear door		Remedy
AR72.10-P-1500GQ	Remove/install window guide rail		Remedy

Validity		
Vehicle	Engine	Transmission
166.823	*	*
166.824	*	*
166.872	*	*
166.873	*	*
166.874	*	*

Attachments

Bild 1.JPG:

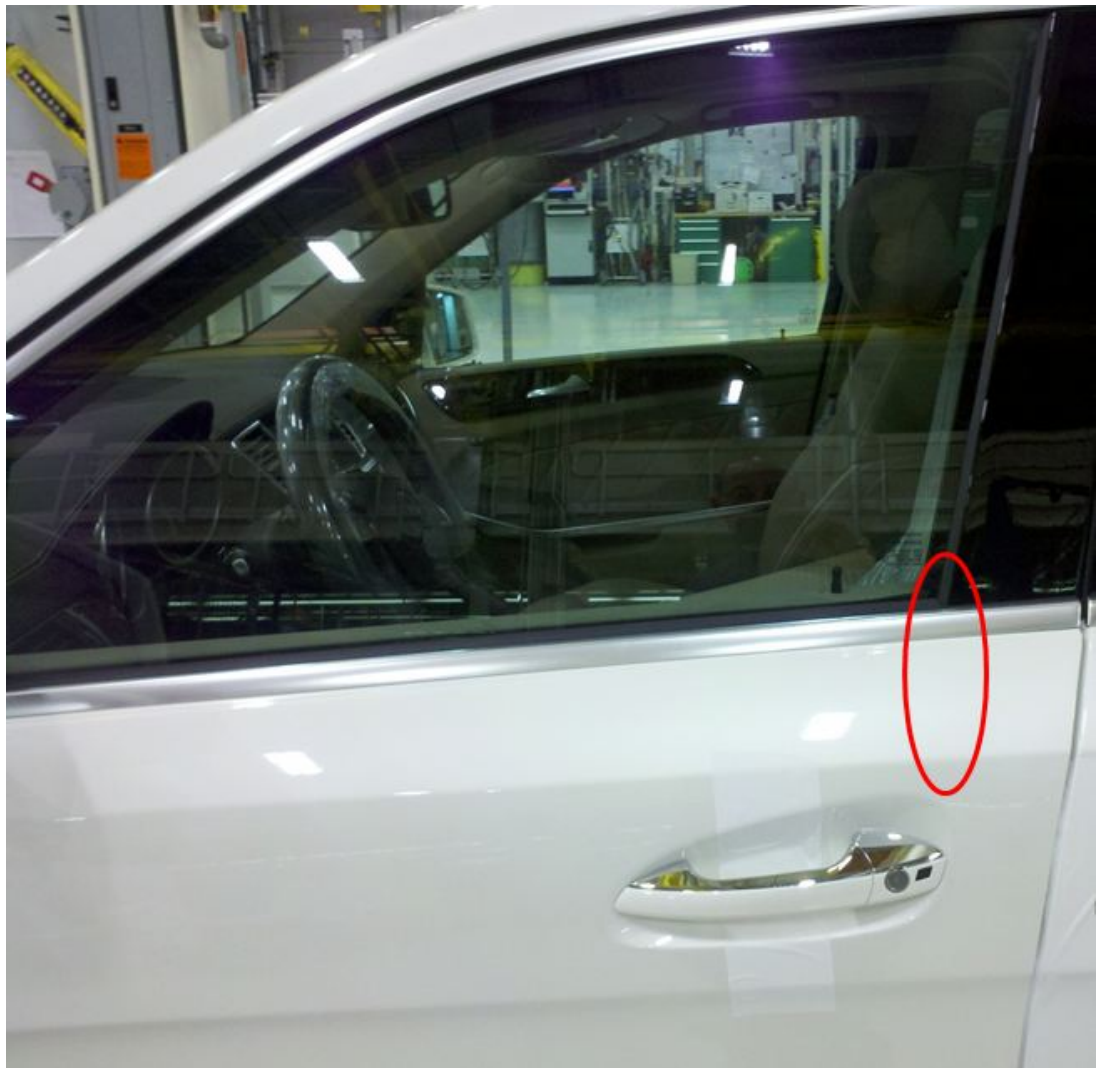


Bild 2.JPG:

