



SUBJECT

Wind Noises

MODEL

F15 (X5)

Produced from June 30, 2013

SITUATION

The customer complains of wind noises from the exterior windows, exterior mirrors and/or A, B or C pillars.

CAUSE

Seal fitment mainly on the exterior mirrors, doors and window seals

CORRECTION

Various repair procedures are explained in the procedure below.

PROCEDURE

Ask the customer a few basic questions to find out where the wind noises are coming from:

- Exterior mirror?
- Door window in the upper rear corner?
- A, B or C pillars?
- At what road speed does the noise occur?

First check for obvious visual issues such as gaps in the doors, pillar trims, window and mirror seals.

There are several possible causes:

Exterior mirrors and the triangle seal protruding (B51 03 14); the SIB was released in January 2014.

- A. Door window wind noise above 35 mph at the top corner near the B-pillar
- B. B-pillar trim mounting screw
- C. Driver's door outside handle cover
- D. Passenger's and rear door handles

Note: Using masking tape to mask off areas of concern can be very helpful in determining the source of the wind noise.

Procedure A

--	--



A wind noise above 35 mph may occur if a gap between the upper corner area of the window seal and the B-pillar can be seen.



Increase the sealing pressure of the window guide seal by adding two pieces of foam (P/N 64 22 6 986 914) approximately 120 mm x 12 mm to the corner location shown. Make sure the corner is fully sealed.

Procedure B



GRUSB5114-169

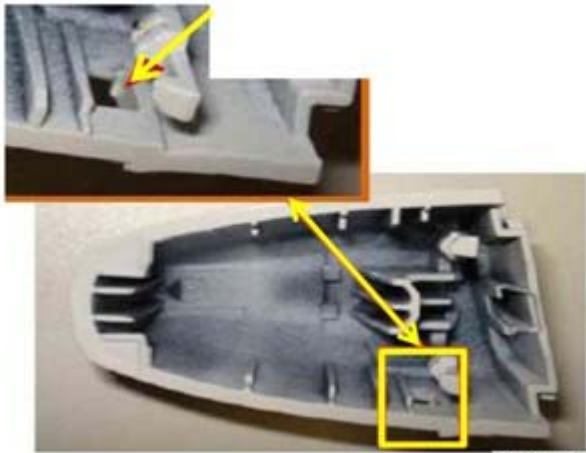
Replace the screws (red box) securing the B-pillar trim with a shorter screw, P/N 52 10 8 119 279 (green box).

Procedure C



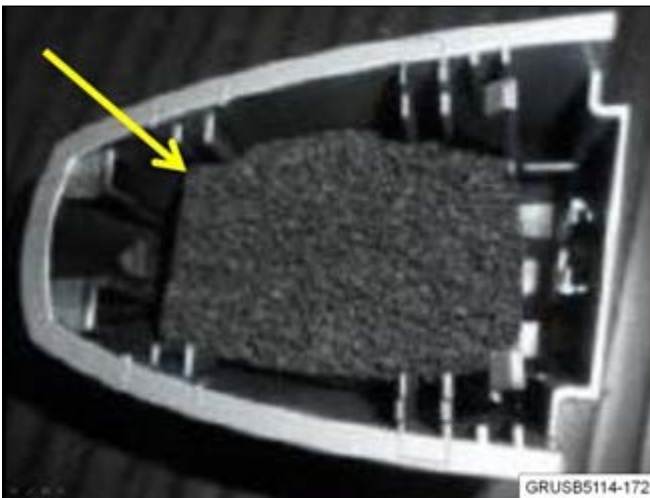
The driver's door handle may create a high-pitched whistling noise when driving at highway speeds. The high-pitched noise is generated from the two areas shown.

GRUSB5114-170



Remove the door handle cover cap and apply a small piece of fabric tape (P/N 61 13 6 902 588) to the cover opening shown.

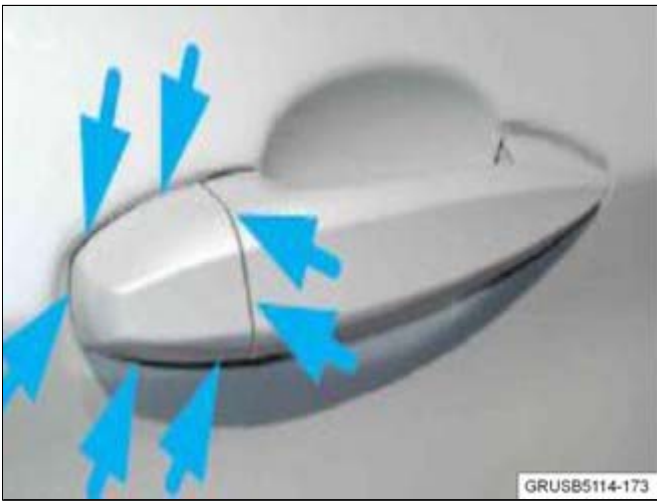
GRUSB5114-171



If there is no foam piece in this location, cut a piece of foam 25x35x15 mm (P/N 16 11 1 108 667) and place it in the cover cap before reinstalling.

GRUSB5114-172

Procedure D



The front passenger and rear door handles may also generate wind noises from the cover cap by allowing air to enter the door.

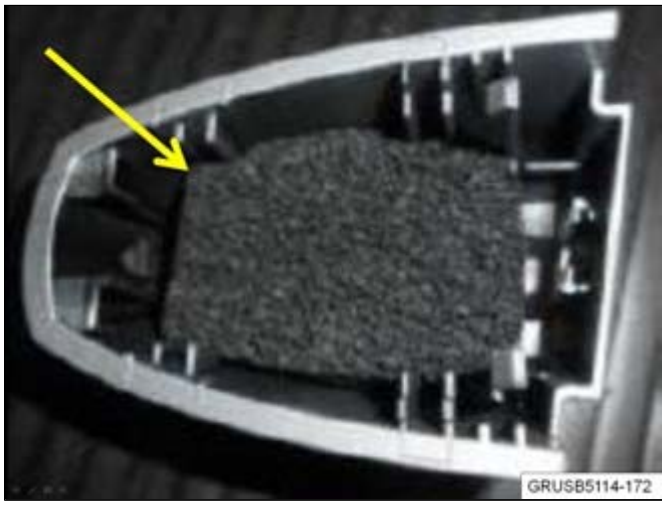


Remove the cover cap and clean the area around the round opening.



Apply a piece of fabric tape (P/N 61 13 6 902 588) to cover the round opening in the door handle as shown.

If there is no foam piece in this location, cut a piece of foam 25x35x15 mm (P/N 16 11 1 108 667) and place it



in the cover cap before reinstalling.

PARTS INFORMATION

Part Number	Description	Quantity
52 10 8 119 279	Screws	As needed
Bulk Parts		
64 22 6 986 914	Sealing tape	As needed
61 13 6 902 588	Fabric tape (19mm)	As needed
16 11 1 108 667	Foam (base - 220mm)	As needed

WARRANTY INFORMATION

Covered under the terms of the BMW New Vehicle/SAV Limited Warranty.

Defect Code:	51 33 09 39 00	Procedure A
---------------------	-----------------------	--------------------

Repairing One Side

Labor Operation:	Labor Allowance:	Description:
51 99 000	4 FRU	Work time to complete Procedure A: Install two foam seals to one window guide seal (Main work)
Or		
51 99 000	2 FRU	Work time to complete Procedure A: Install two foam seals to one window guide seal (Plus work – Vehicle already in the workshop)

Repairing Both Sides

Labor Operation:	Labor Allowance:	Description:
		Work time to complete Procedure A:

51 99 000	6 FRU	Install two foam seals to both window guide seals (Main work)
Or		
51 99 000	4 FRU	Work time to complete Procedure A: Install two foam seals to both window guide seals (Plus work – Vehicle already in the workshop)

And/or

Defect Code:	51 33 22 39 00	Procedure B
---------------------	-----------------------	--------------------

Repairing Both Sides

Labor Operation:	Labor Allowance:	Description:
51 99 000	3 FRU	Work time to complete Procedure B: Replace both B-pillar screws (Main work)
Or		
51 99 000	1 FRU	Work time to complete Procedure B: Replace both B-pillar screws (Plus work – Vehicle already in the workshop)

And/or

Defect Code:	51 21 05 39 00	Procedure C
Labor Operation:	Labor Allowance:	Description:
51 99 000	4 FRU	Work time to complete Procedure C: Install fabric tape and foam seal to driver's door handle cap (Main work)
Or		
51 99 000	2 FRU	Work time to complete Procedure C: Install fabric tape and foam seal to driver's door handle cap (Plus work – Vehicle already in the workshop)

And/or

Defect Code:	51 21 05 39 00	Procedure D only
		Or
	51 22 05 39 00	Procedure D performed with

Procedure C		
Labor Operation:	Labor Allowance:	Description:
51 99 000	5 FRU	Work time to complete Procedure D: Install fabric tape foam seal to the passenger's side and both rear door handles (Main work)
Or		
51 99 000	3 FRU	Work time to complete Procedure D: Install fabric tape foam seal to the passenger's side and both rear door handles (Plus work – Vehicle already in the workshop or with performing procedure C)

And, as applicable

Sublet – Bulk Materials

Sublet Code 4	See sublet reimbursement calculation below	Reimbursement for the repair-related bulk materials (Please do not use BMW part numbers for claim submission)
---------------	--	---

Sublet reimbursement calculation for claiming the used quantities of repair-related bulk materials (BMW part numbers) is at dealer net plus handling.

Enter this material cost in sublet and itemize the amount in the claim comment section.

[Copyright ©2014 BMW of North America, Inc.]