

**SUBJECT****B38 and B48 Engines: Grease Residue Found at Bottom of Transmission Bell Housing****MODEL**

F56 (Cooper)

With B38 engine

F56 (Cooper S)

With B48 engine

INFORMATION

While performing repairs to the underside of the vehicle, the technician may notice yellow grease residue has formed on the lowest point of the transmission bell housing near the engine starter.

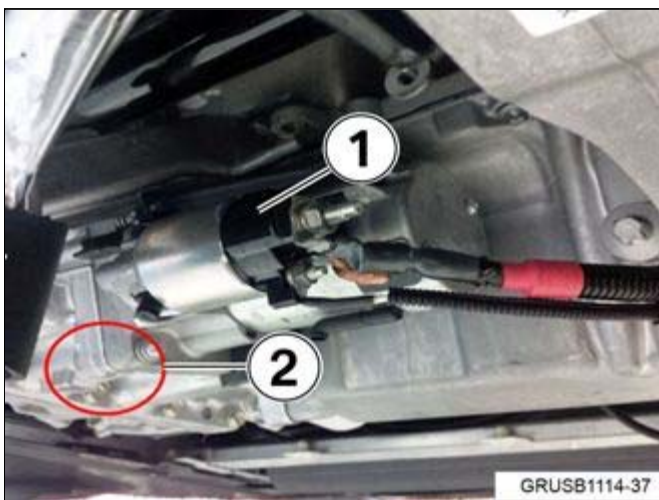
The residue is not related to the engine oil or transmission fluid.

The grease was applied to the starter during vehicle assembly.

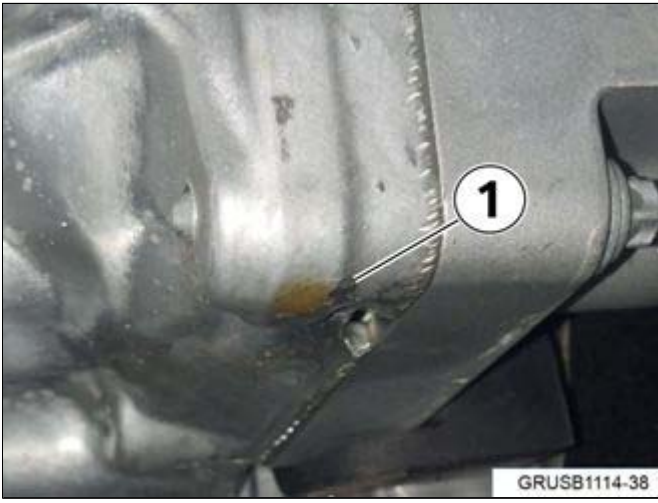
If the residue is noticed, the grease can be wiped away with a shop towel. The residue will stop accumulating after the engine has been operated for a few hundred miles.

If the residue were to drip from the bell housing, it would be caught by the under body covering and would not create a customer complaint. In a severe case, some marks may be seen on the engine side of the under body covering. The grease drippings will not be seen on the ground under the vehicle.

Do not remove or replace any components.



Starter (1)
Formation of grease residue (2)



Formation of grease residue (1)

WARRANTY INFORMATION

Not applicable.

[Copyright ©2014 BMW of North America, Inc.]