

**SUBJECT****Noise from Rearview Mirror****MODEL**

F30 (3 Series Sedan)

F31 (3 Series Sports Wagon)

F32 (4 Series Coupe)

F34 (3 Series Gran Turismo)

Produced from July 1, 2011

With option 0430 or 0431 (Automatic Dipping Rearview Mirror)

**SITUATION**

Rattling noises can be heard from the rearview mirror when driving.

**CAUSE**

The mirror electrical connector is loose in the mirror base.

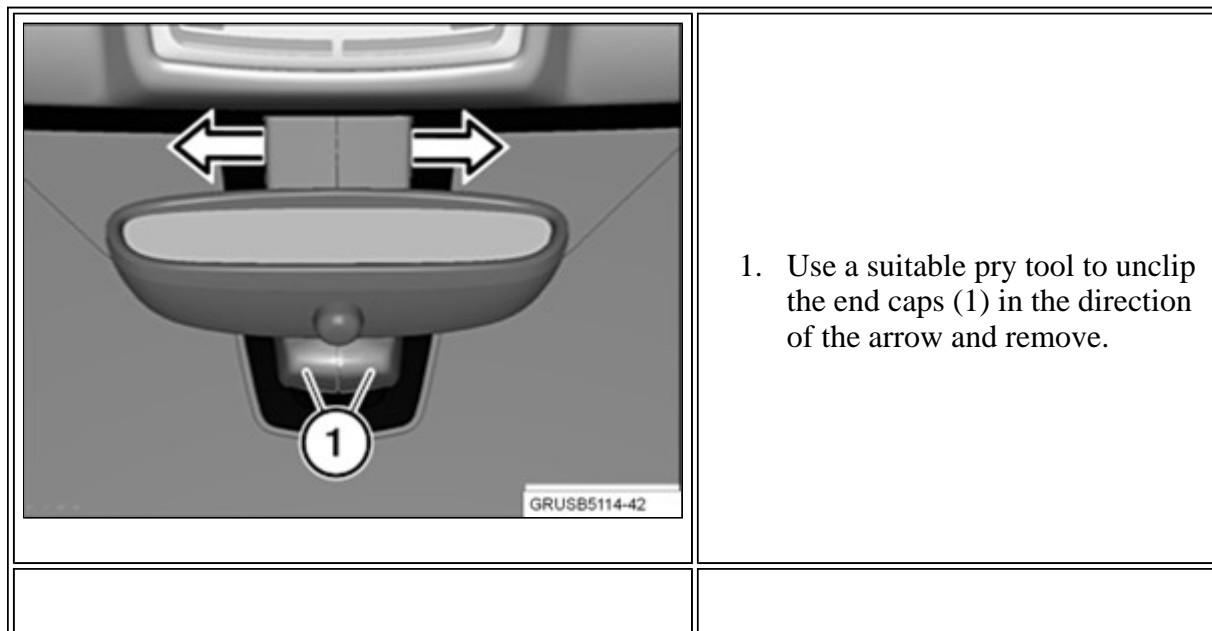
**PROCEDURE**

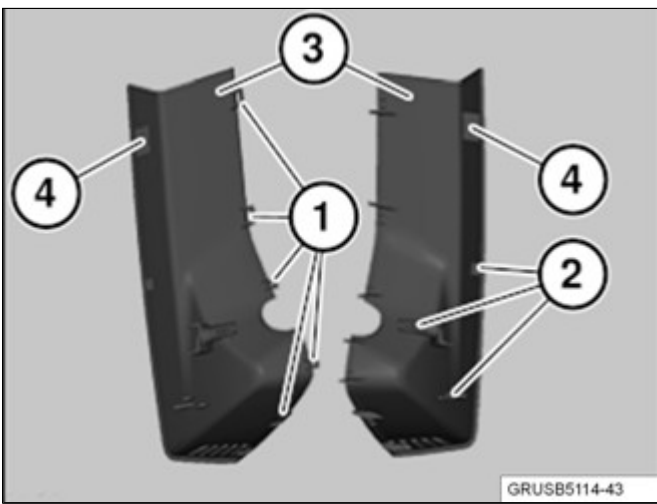
Confirm the customer complaint. If the rearview mirror area is the complaint, proceed to the next step and remove the rearview mirror.

**Important!**

Work may only be performed at a room/vehicle temperature of between 65° F and 82° F.

It is necessary to equalize the temperature of the windshield, mirror base and inside mirror (e.g., let the vehicle sit indoors to warm up or in the shade to cool down for at least 30 minutes).

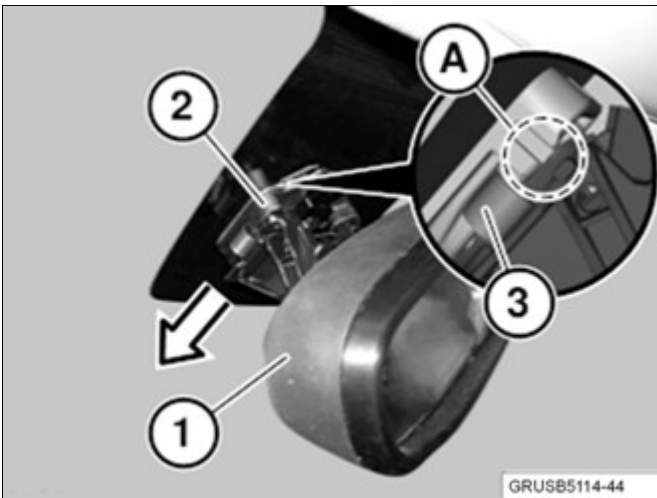




## 2. Installation note:

The latch mechanisms (1) and guides (2) on both end caps (3) must not be damaged.

For the end caps (3) with tabs (4), the spacers must be bonded onto the tabs (4).



## 3. Important!

Risk of damage!

When removing the mirror base, never turn or disengage towards the front or rear.

The mirror is held to the mirror socket (2) by the clamp (3) and the latching mechanism in area (A).

It is not necessary to disconnect the electrical plug connection on the mirror (1).

### Installation note:

The retaining clips (3) must not be bent or damaged.

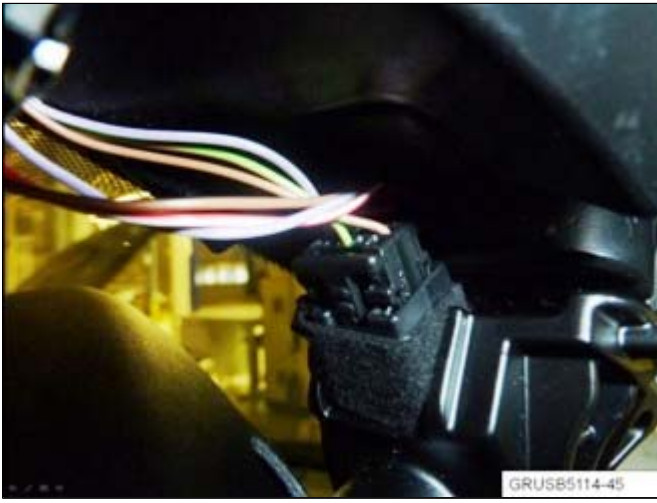
The inside mirror (1) in area (A) must be correctly engaged to the mirror socket (2).

## 4. Remove the electrical connector from the mirror base holder.

Prepare a felt strip (50mm x 15mm x 1 mm) and wrap the felt tape around the connector. Reinstall the connector into the holder as shown.

**Note:** This close-up shows the electrical connector already

wrapped with the felt and  
reinstalled into the holder.



#### PARTS INFORMATION

Part Number	Description	Quantity
51 45 2 353 024	Felt strip set	See sublet

#### WARRANTY INFORMATION

Covered under the terms of the BMW New Vehicle/SAV Limited Warranty

<b>Defect Code:</b>	<b>51 16 02 57 00</b>	
<b>Labor Operation:</b>	<b>Labor Allowance:</b>	<b>Description:</b>
51 16 063	Refer to KSD2	Removing and installing or replacing inside mirror
and		
51 99 000	1 FRU	Work time to remove the electrical connector, wrap with the felt tape and insert back into the holder
<b>Sublet - Materials</b>		
Sublet Code 4	\$1.00	Sublet reimbursement up to the amount listed, charged to sublet code 4 for the quantity felt strip (Bulk quantity P/N 51 45 2 353 024) required to perform the procedure. Do not use this part number for claim submission.

Labor operation code 51 16 063 is a Main labor operation. If you are using a Main labor code for another repair, use the Plus code labor operation 51 16 563 instead.

Refer to KSD2 for the corresponding flat rate unit (FRU) allowance. Enter the Chassis Number, which consists of the last 7 digits of the Vehicle Identification Number (VIN). Click on the "Search" button, and then enter the applicable flat rate labor operation in the FR code field.

Even though work time labor operation code 51 99 000 ends in "000," it is not considered a Main labor operation. Also, since the "work time" FRU allowance to be claimed is specified, a separate punch time is not required.

