



# Service Bulletin

File in Section: 08 - Body and Accessories

Bulletin No.: 07-08-50-022C

Date: September, 2014

## TECHNICAL

**Subject:** Second Row Seat Rattle and/or Hard to Latch and Unlatch, Power Release Fold and Tumble Not Fully Functioning (Perform Repair as Outlined)

**Models:** 2007-2014 Cadillac Escalade Models  
2007-2014 Chevrolet Suburban, Tahoe  
2007-2014 GMC Yukon Models

This bulletin has been revised to add the 2013-2014 Model Years, update the Condition, Cause, Correction sections and update the Labor Operation numbers to the Global Labor Code (GLC). Please discard Corporate Bulletin Number 07-08-50-022B.

### Condition

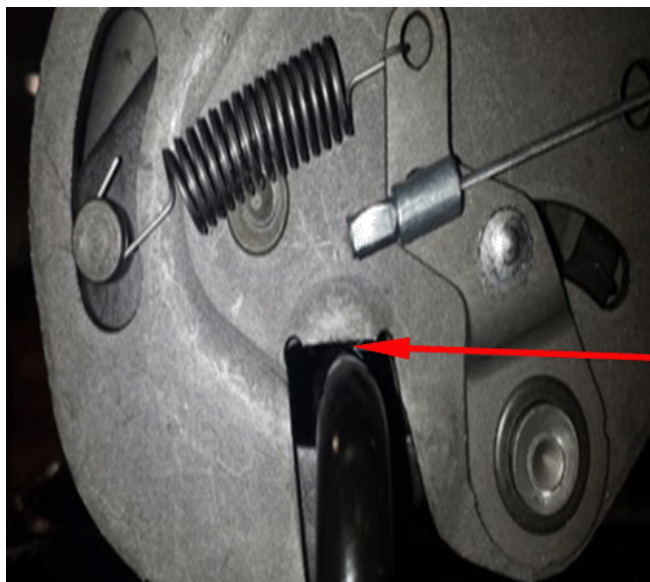
Some customers may comment on the following conditions with the second row seat:

- A rattle may occur from the seat when driving over bumps.
- When using the power release fold and tumble function, if equipped, the seat will fold but will not tumble or raise forward.
- When releasing the seat latches manually to tumble or raise the seat, the latches may be difficult to release.
- When lowering the seat, the latches may be difficult to fully secure.

### Cause

The concern may be caused by the seat bottom latch not being properly aligned with the striker on the floor (part of the seat base plate). This may be the result of the seat latch not being square to the striker, or possibly the floor being slightly lower in one corner of the second row seat mounting area, possibly affecting the alignment of the seat latches and the strikers on the seat base plate. It may also be possible the floor carpet is interfering with the latch if out of position, etc.

### Correction

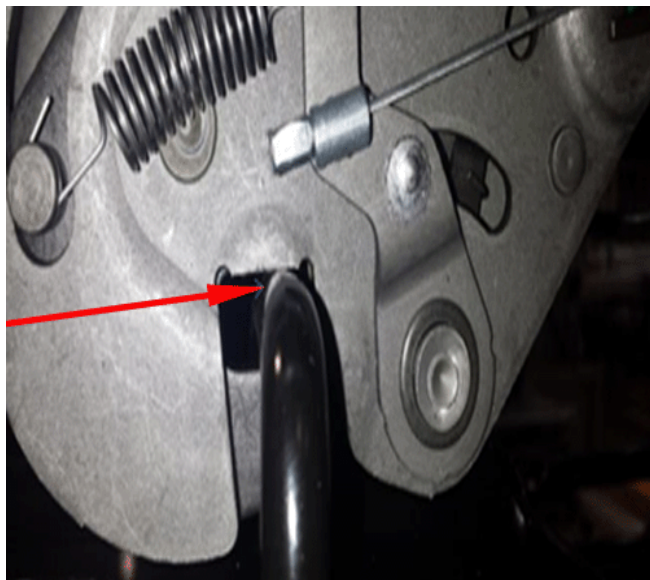


Inspect the second row seat latches for proper operation/latching. Inspect the latch to striker interface both inboard and outboard for gapping as shown. If no gapping is present, attempt to rock the seat side to side to check for any looseness at the latches to strikers. If any gapping is present, or if any looseness is observed, perform the following to seat/align the latches to the strikers.

1. With the affected seat in the tumbled forward position, “forcefully” slam the seat down into the latched position.
2. Repeat this procedure 3 to 4 times.
3. Latch the seat down using normal force and verify the rattle noise and/or latching condition is corrected.
4. If the rattle noise and/or latching condition is still present, repeat steps 1-3 one additional time.

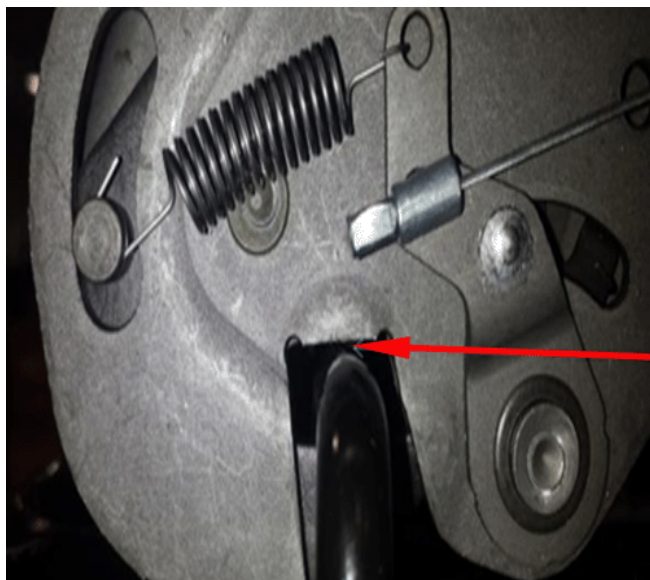
If the rattle and/or latching condition is still present after attempting to seat/align the latches to the strikers, continue with the following steps to adjust carpet fit and/or adjust leveling of the seat spacer base plate to correct striker to latch fit, as necessary.

1. Place the affected seat into the tumbled forward position.
2. Verify that the seat latches on the bottom of the seat are fully opened.



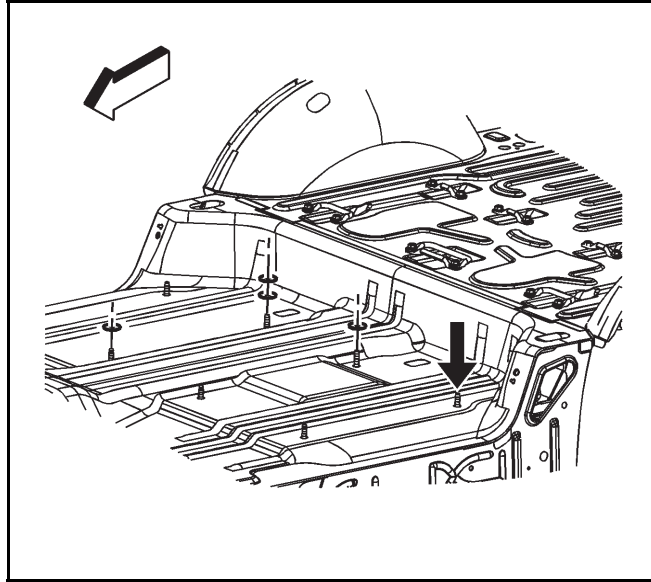
3966591

3. Slowly lower the seat to rest the latches on the strikers; **Do Not** allow the seat to latch. Observe the seat latches to mating strikers for even contact or gap.
4. If there is even contact and no gap between the latches and strikers, observe the carpet for signs of not being fully seated, or being improperly installed. Mispositioned carpet may possibly hinder full motion of the latches down onto the strikers.
5. Correct any conditions that may be caused by the carpet, then retest seat latch function.

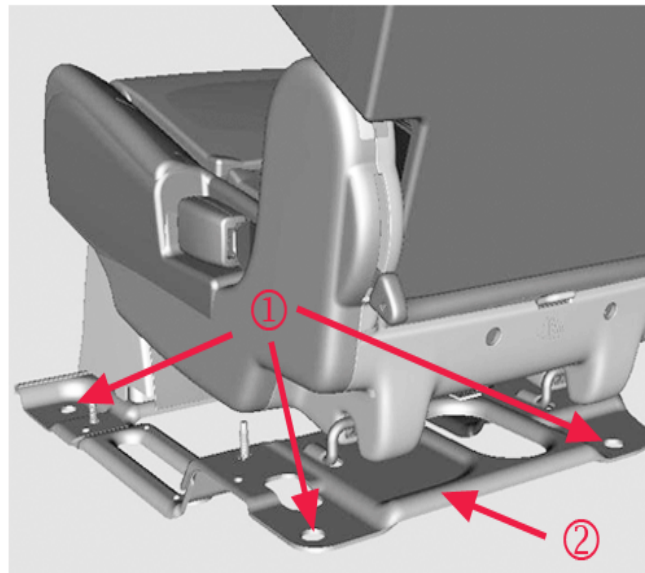


3966595

6. If a gap is present between one of the latches and the mating striker, measure the vertical gap.



2040919



2771502

**Important:** For any mounting stud location (1) requiring spacer washers, ensure a minimum of three threads of the stud will be exposed once the nuts have been tightened to specification.

7. Determine the appropriate number of spacer washers required to adjust the seat riser plate (2) to be level.

- If the latch to striker gap is 3 mm (0.118 in) or less, add one washer.
- If the gap is greater than 3 mm (0.118 in), add two washers.

8. Remove the floor covering.

**Note:** It is possible that depending on the floor pan, spacer washers might be needed at one of the forward stud locations as well as, or instead of, at a rear location.

**Important:** If there are washers already present on the studs leave them in place.

9. Remove all the seat mounting nuts and lift the seat assembly to add the spacer washers to the appropriate mounting stud nearest the striker that had a gap to the latch.

10. Reinstall the seat.

11. Reinstall the nuts.

### **Tighten**

Tighten the nuts to 45 N•m (33 lb ft).

**Important:** There must always be a minimum of 3 exposed threads of the stud past the end of the nut once it is fully seated and tightened to specification.

12. Verify proper seat operation by completing the following steps:

- 12.1. Cycle the seat to be fully latched, then release the latches and move the seat to the tumbled forward, or raised position.
- 12.2. Cycle the seat to be fully latched, then operate the seat to verify that it can be manually released, and power released if equipped, without any binding.
- 12.3. If the seat still exhibits binding while releasing the seat latches, repeat the latch to striker inspection steps. If the latches still exhibit a gap, it may be necessary to adjust locations and/or quantity of the spacer washers; possibly including using the forward stud locations as needed to level out the seat riser plate.

13. Once proper seat operation is verified, reinstall the floor covering.

14. Re-verify proper seat operation with the carpet installed.

## Parts Information

Part Number	Description
11562546	Washer

## Warranty Information

For vehicles repaired under the Bumper-to-Bumper coverage (Canada Base Warranty coverage), use the following labor operation. Reference the Applicable Warranties section of Investigate Vehicle History (IVH) for coverage information.

Labor Operation	Description	Labor Time
7080128*	Seat / Align 2nd Row Seat Latches to Strikers	0.2 hr
7080138*	Shim Second Row Seat Assembly	0.4 hr
Add	To Shim Other Seat	0.3 hr
*This is a unique Labor Operation for Bulletin use only. It will not be published in the Labor Time Guide.		