



# Service Bulletin

File in Section: -

Bulletin No.: PI0965B

Date: September, 2014

## PRELIMINARY INFORMATION

**Subject:** Squeaking/Creaking Type Noise Heard When Using Clutch Pedal

**Models:** 2012-2013 Chevrolet Cruze Equipped with Manual Transmission (RPOs MF3, MR5, MZ0)  
2012-2013 Chevrolet Sonic Equipped with Manual Transmission (RPOs MZ4, M26)

This PI has been revised to update the information under Recommendation/Instructions and the Labor Operation to the Global Labor Code (GLC). Please discard PI0965A.

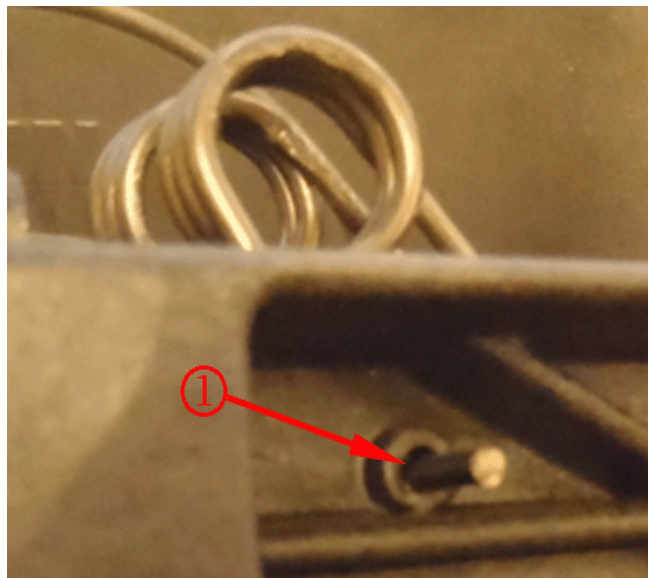
### Condition/Concern

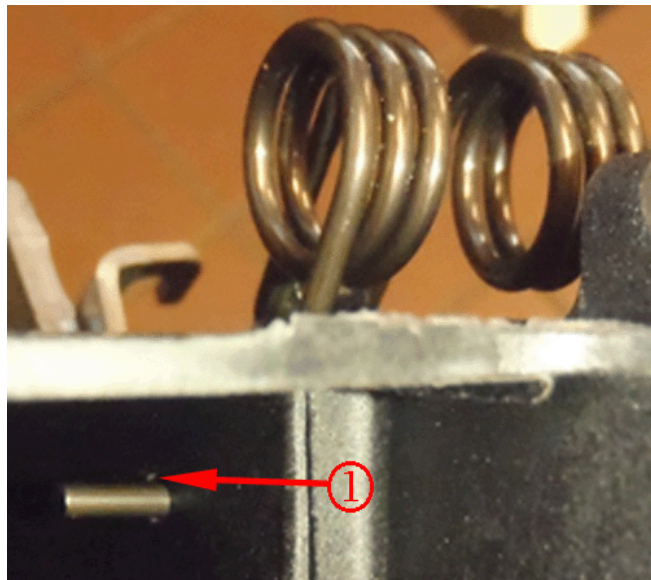
Some customers may comment on a squeaking/creaking type noise heard when using the clutch pedal. This may be caused from lack of or no lubrication on the clutch pedal pin and/or the clutch pedal return spring (tension spring).

### Recommendation/Instructions

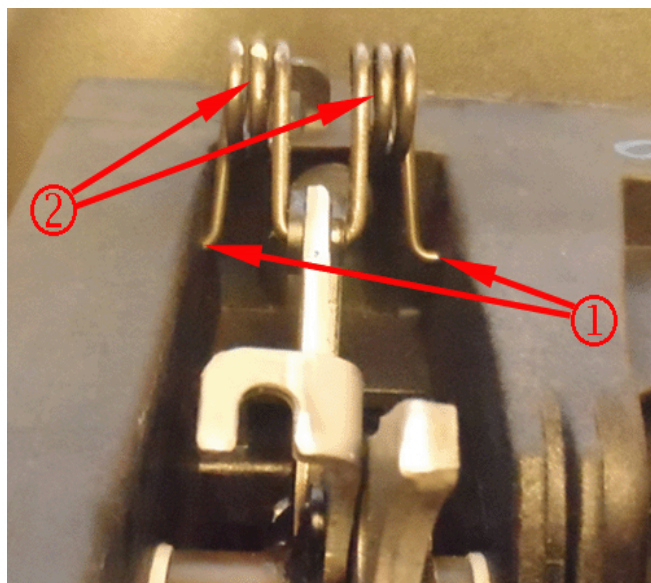
Apply GM Super Lube, P/N 12346241 (in Canada, P/N 10953474) or equivalent, on the clutch pedal pivot pin and clutch pedal return spring (tension spring) following the procedure listed below:

1. Remove the pedal assembly. Refer to Brake, Accelerator, and Clutch Pedal Replacement in SI.



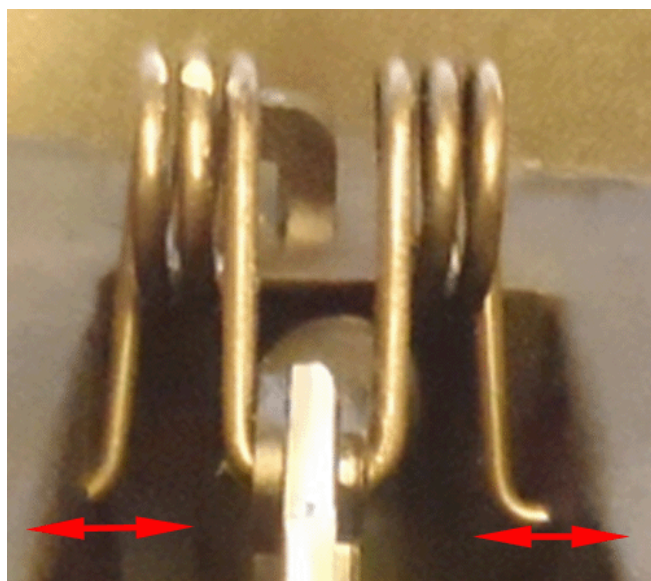


3971282



3971261

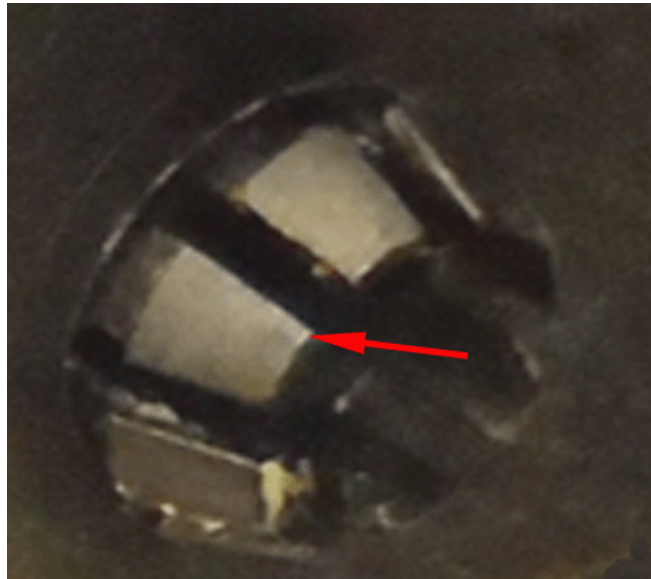
2. Apply GM Super Lube on both sides of the hole on the clutch pedal return spring (1), and both spring coils (2).



3971300

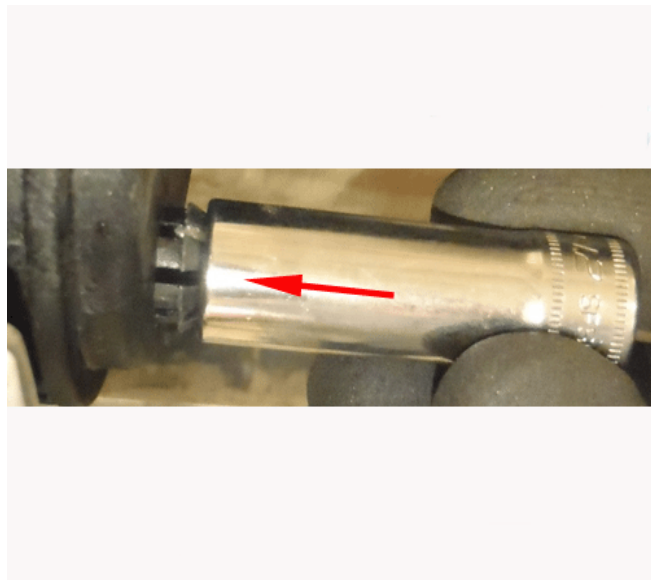
**Note:** Once Super Lube has been applied, exercise the spring as shown.

3. Apply GM Super Lube on the clutch pedal pivot pin.



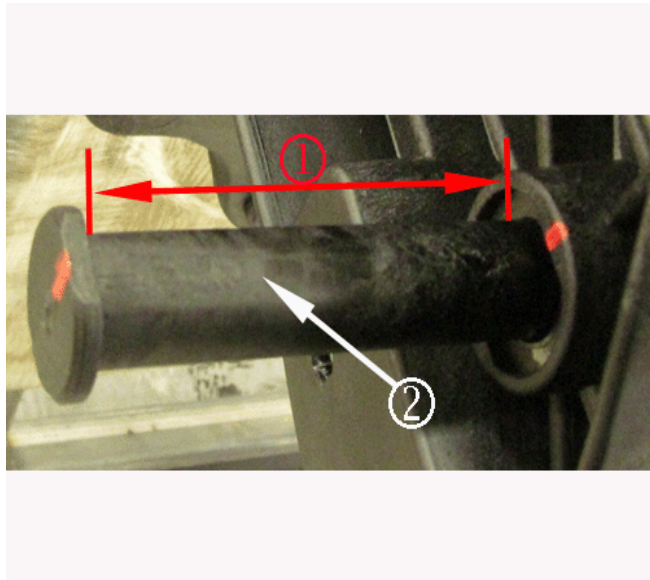
3971347

3.1. Release the clutch pedal pivot pin by squeezing the finger locks.



3971358

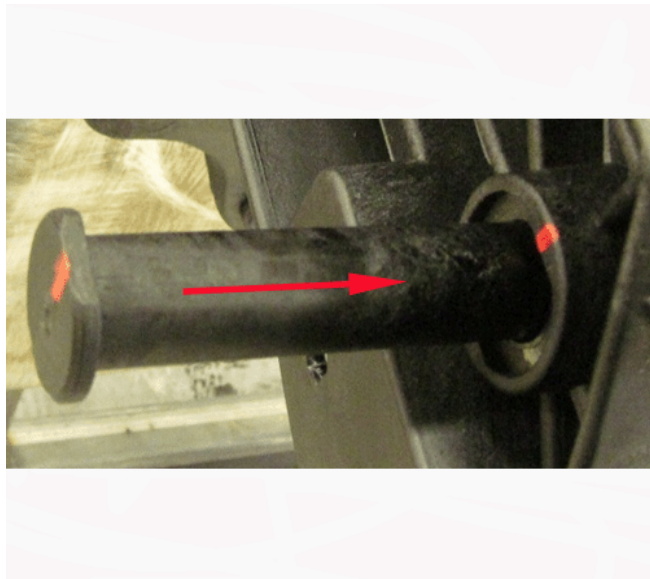
3.2. Using a 12 mm socket, push against the ramps of the finger locks.



3971448

3.3. Slide the clutch pedal pivot pin out 45-50 mm (1.77–1.97 in) max (1), and fully lube around the exposed length of the pin (2).

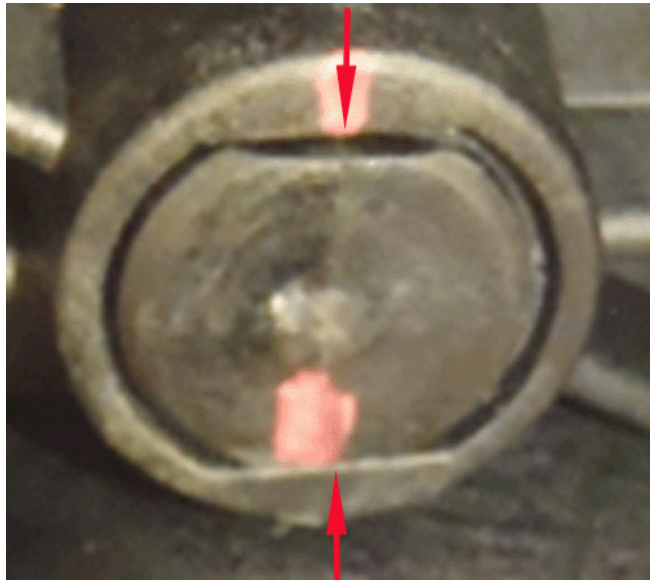
**Important:** DO NOT remove the pin during the lubrication process.



3971460

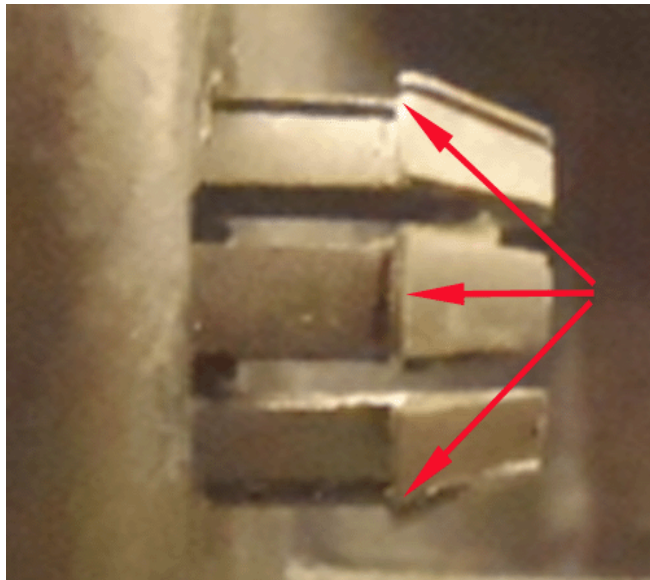
3.4. Slide the clutch pedal pivot pin back into place.





3973262

3.5. Ensure that the anti rotation flat on the pivot pin is aligned with the flat on the boss.



3971502

**Note:** All the finger locks need to be through and sprung back into place.

4. Reinstall the pedal assembly.

### Warranty Information

For vehicles repaired under the Bumper-to-Bumper coverage (Canada Base Warranty coverage), use the following labor operation. Reference the Applicable Warranties section of Investigate Vehicle History (IVH) for coverage information.

| Labor Operation  | Description  | Labor Time |
|--|--|------------|
| 8480098*   | Lubricating the Clutch Pedal Pin and Clutch Pedal Return Spring (Tension Spring) | 1.9 hrs    |
| *This is a unique Labor Operation for Bulletin use only. It will not be published in the Labor Time Guide. |  |            |