



# Service Bulletin

File in Section: -

Bulletin No.: P11292

Date: August, 2014

## PRELIMINARY INFORMATION

**Subject:** Front Seat Cushion Cover J-Channel Retainer Disconnected or Loose from Seat Frame

**Models:** 2014 Chevrolet Caprice PPV, SS

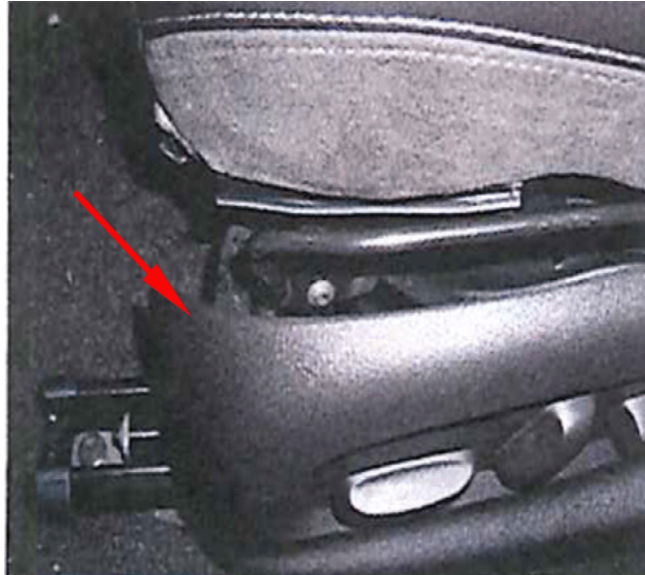
### Condition/Concern

Some customers may comment on the front seat cushion cover J-channel retainer being disconnected or loose from the seat frame.

This condition may be due to a shift with the flange height on the seat frame.

### Recommendation/Instructions

Install retainers on both driver and passenger seats and apply deadener patches to the seat cushion cover front J-channel retainer following the procedure listed below:



3961470

1. Partially remove the front seat cushion outer finish cover on the driver and passenger front seats. Refer to Front Seats Cushion Outer Finish Cover Replacement in SI.



3965097

2. Apply 2 pieces of deadener 35 x 100 mm (1.38 x 3.94 in) on the right and left front J-channel retainer as shown illustrated above.



3961987



3965092

3. Install the retainers over the seat base as shown in the illustration above.

**Important:** Make sure the clip retains the J channel not just the cover.

## Parts Information

Part Number	Description	Qty	Material Allowance
11611745	RETAINER, F/SEAT CUSH CVR	4	-
25757810*	DEADENER-FLR PNL (1.38 in x 3.94 in (35 mm x 100 mm))	1	\$0.26 USD (per vehicle) \$0.28 in Canada (per vehicle)

\*There is enough material to do approximately 10 vehicles. Store material for future use.

## Warranty Information

For vehicles repaired under the Bumper-to-Bumper coverage (Canada Base Warranty coverage), use the following labor operation. Reference the Applicable Warranties section of Investigate Vehicle History (IVH) for coverage information.

Labor Operation	Description	Labor Time
7080118*	Installing Retainers and Deadener Patches on the Driver and Passengers Seat Cushion Cover	0.6 hr

\*This is a unique Labor Operation for Bulletin use only. It will not be published in the Labor Time Guide.