



Service Bulletin

File in Section: -

Bulletin No.: P1275

Date: July, 2014

PRELIMINARY INFORMATION

Subject: Reduced Vehicle Speed, Malfunction Indicator Lamp (MIL) and/or Diesel Exhaust Fluid (DEF) Light Illuminated, DTCs P204B, P204F Set

Models: 2011-2015 Chevrolet Silverado 2500/3500
2011-2015 GMC Sierra 2500/3500
Equipped with 6.6L Duramax Diesel Engine (RPOs LML or LGH)

Condition/Concern

Some customers may comment on reduced vehicle speed, malfunction indicator lamp (MIL) and/or diesel exhaust fluid (DEF) light illuminated. Technicians may find DTCs P204B, P204F set or stored in history.

This condition is predominantly related to cold ambient temperatures consistently below -20°C (-4°F).

Recommendation/Instructions

If there are DTCs set, follow normal diagnostics in SI. If no hardware failure is found, install the remote mounted temperature sensor kit following the procedure listed below.

2011-2014 Model Years

1. Remove the air cleaner assembly. Refer to Air Cleaner Assembly Replacement in SI.
2. Remove the front grille assembly. Refer to Front Grille Replacement in SI.





3772278

3. Install the temperature sensor to the bracket mount on the right-hand side of the frame using the existing U-bolt studs and nuts as shown in the illustrations above.

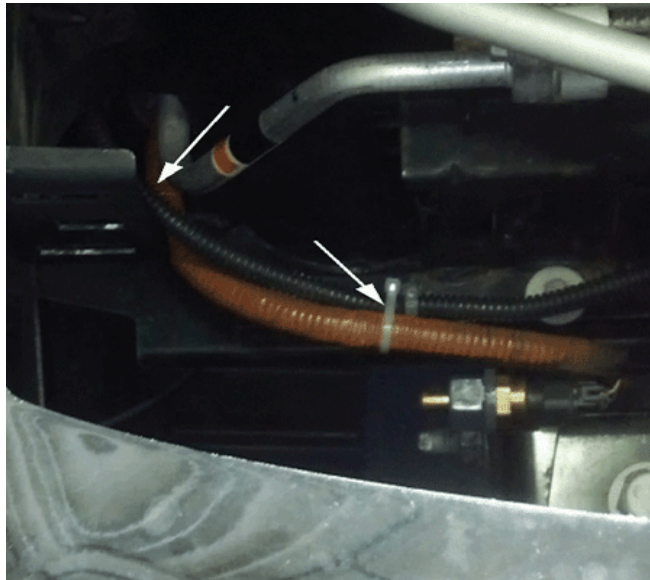
Tighten

Tighten the frame nuts to 160 N•m (118 lb ft) and the temperature sensor to 20 N•m (15 lb ft).



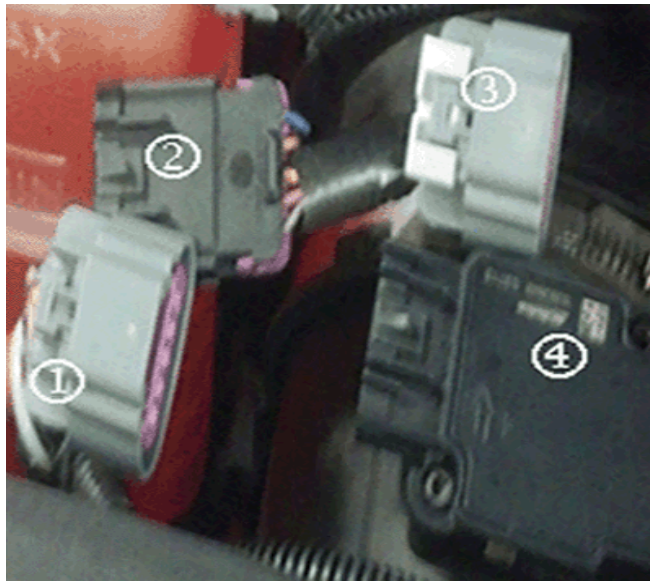
3772449

4. Take the remote temperature sensor harness and route underneath the air cleaner assembly bracket as shown in the illustration above.

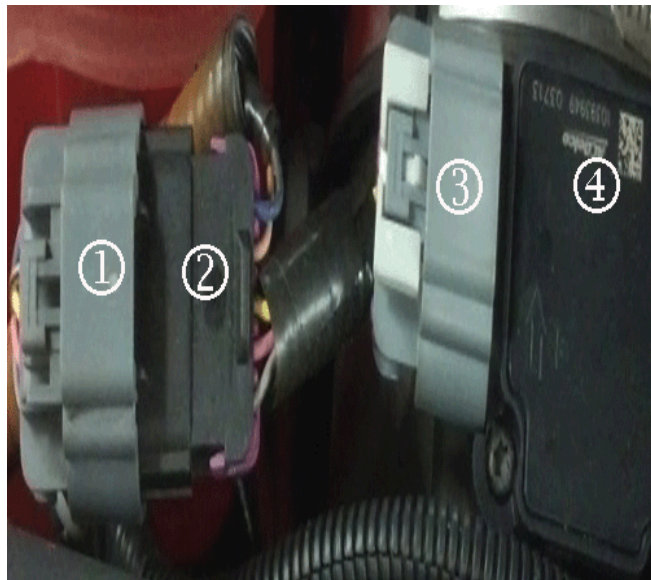


3772262

5. Route the harness between the radiator support and radiator side tank and zip tie to the existing harness as shown in the illustration above.
6. Reinstall the air cleaner assembly.
7. Reinstall the front grille assembly.



3772678



3773272

8. Hook up the mass air flow (MAF) sensor connector (1) to the remote mounted temperature sensor harness (2) as shown in the illustration above.
9. Align the air cleaner duct and tighten the clamp.

2015 Model Year Only

Important: DO NOT install the sensor on vehicles equipped with RPO AVF.

1. Remove the right side wheelhouse liner. Refer to Front Wheelhouse Liner Replacement - Right Side in SI.



3803386

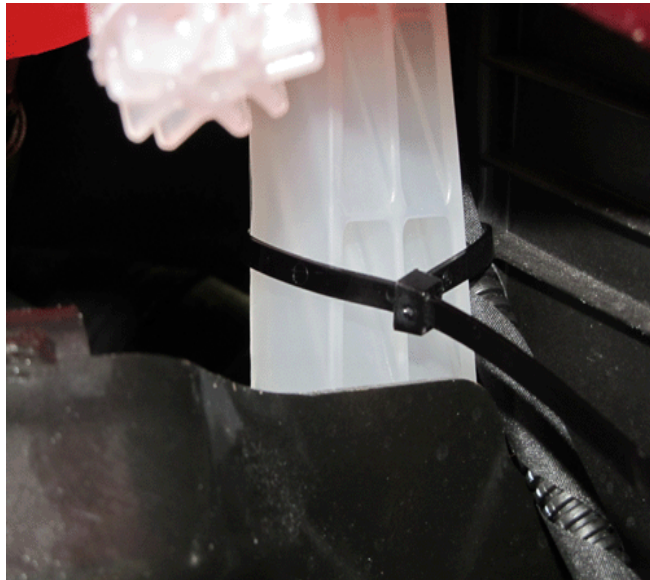


3803394



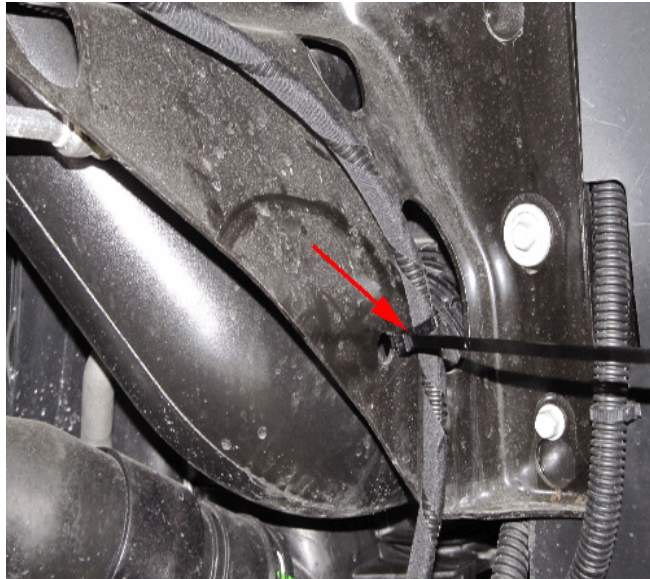
3803400

2. Disconnect the mass air flow (MAF) sensor connector and install the remote temperature sensor harness as shown in the illustrations above. Route the remaining remote temperature sensor harness between the coolant surge tank and air cleaner assembly into the wheelhouse space.



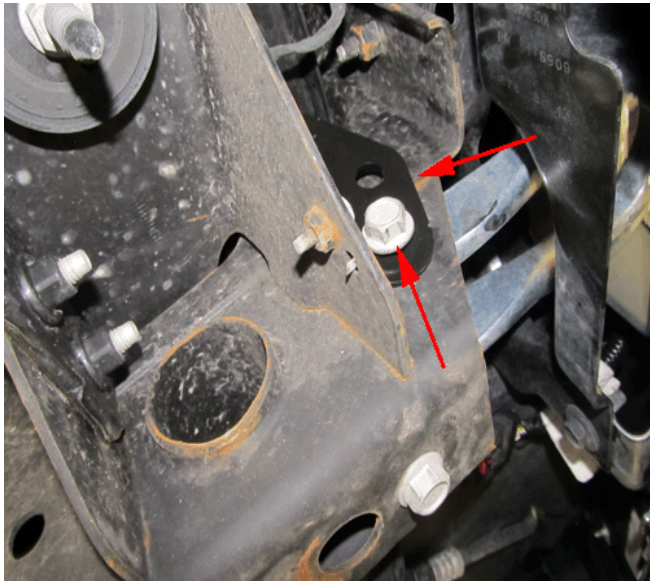
3803743

3. Route the harness underneath the air cleaner and zip tie the harness to the support bracket, as shown in the illustration above, to avoid pinching the harness with the wheelhouse liner.



3803794

4. Route the harness underneath the charge air cooler and the top of the frame and zip tie as shown in the illustration above.



3803772



3803788



3803727

5. Install the temperature sensor to the bracket mount and clip the connector to the sensor. Use the existing U-bolt stud and nut to attach the mount on the right side of the frame as shown in the illustrations above.

Tighten

Tighten the frame nuts to 105 N•m (77 lb ft) and the temperature sensor to 20 N•m (15 lb ft).

6. Reinstall the right side wheelhouse liner.

Parts Information

Part Number	Description
19303327	SENSOR PKG, INT AIR TEMP

Warranty Information

For vehicles repaired under the Powertrain coverage, use the following labor operation. Reference the Applicable Warranties section of Investigate Vehicle History (IVH) for coverage information.

Labor Operation	Description	Labor Time
4080468*	Installing Remote Mounted Temperature Sensor Kit	1.0 hr

*This is a unique Labor Operation for Bulletin use only. It will not be published in the Labor Time Guide.