



**NUMBER:** 26-001-14

**GROUP:** Vehicle Data

**DATE:** January 24, 2014

*This bulletin is supplied as technical information only and is not an authorization for repair. No part of this publication may be reproduced, stored in a retrieval system, or transmitted, in any form or by any means, electronic, mechanical, photocopying, or otherwise, without written permission of Chrysler Group LLC.*

**THIS SERVICE BULLETIN IS ALSO BEING RELEASED AS RAPID RESPONSE TRANSMITTAL (RRT) 14-007. ALL APPLICABLE SOLD AND UN-SOLD RRT VIN'S HAVE BEEN LOADED. TO VERIFY THAT THIS RRT SERVICE ACTION IS APPLICABLE TO THE VEHICLE, USE VIP OR PERFORM A VIN SEARCH IN TECHCONNECT. ALL REPAIRS ARE REIMBURSABLE WITHIN THE PROVISIONS OF WARRANTY.**

**SUBJECT:**

Incorrect Vehicle Data / Vehicle Information Label

**OVERVIEW:**

This bulletin involves replacing the Vehicle Data/Vehicle Information (VECI) label/sticker.

**MODELS:**

2014	(DD)	3500 Cab Chassis
2014	(DP)	4500/5500 Cab Chassis

**NOTE: This bulletin applies to vehicles built on or after January 1, 2014 (MDH 0101XX) and on or before January 14, 2014 (MDH 0114XX) equipped with 6.7L I6 Cummins Turbo Diesel Engine sales code (ETK) plus LT265/70R18E BSW On/Off Road Tires sales code (TTV) or LT235/80R17E BSW All Season Tires sales code (TV2) or LT235/80R17E OWL On/Off Rd Tires sales code (TV3) or 225/70R19.5G All Position Tires sales code (TUV) or 225/70R19.5G All Pos Ft,Rr Traction sales code (TUY) or 225/70R19.5G All Traction Tires sales code (TUZ).**

**SYMPTOM/CONDITION:**

Some customers may have a incorrect or missing VECI label/sticker lacking the low rolling resistance tire information.

**DIAGNOSIS:**

If a customer's VIN is listed in VIP or your RRT VIN list, perform the repair. For all other customers that describe the symptom/condition, perform the Repair Procedure.

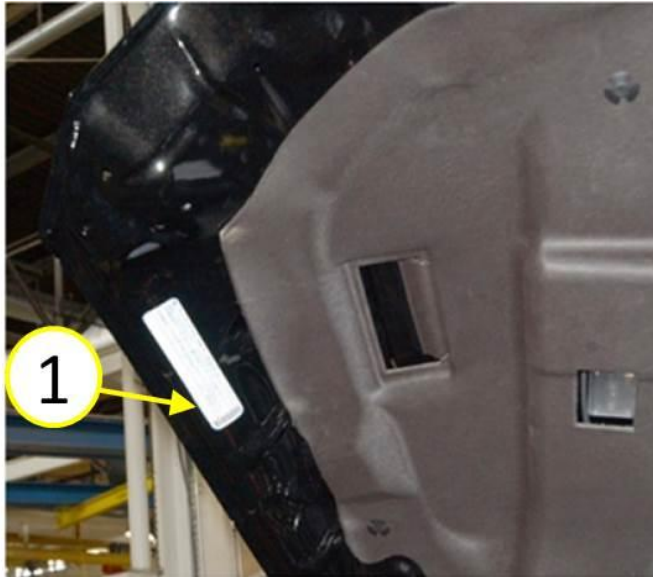
**PARTS REQUIRED:**

Qty.	Description
1 (AR)	VECI Label

**NOTE: Customer care will contact the service manager of your dealership. If there are questions, contact your business center.**

**REPAIR PROCEDURE:**

1. Open hood.
2. Inspect vehicle for VECI label on underside of hood on right side (passenger side) of vehicle in location shown in (Fig. 1). Is a VECI label located in the identified location?
  - a. YES>>> Continue with next step.
  - b. NO>>> Proceed to [Step #5](#)

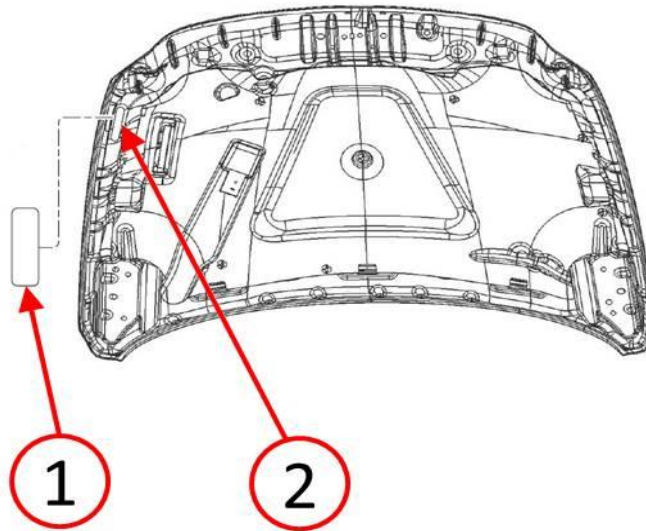


**Fig. 1 VECI Label**

1 - VECI Label

- 
3. Remove existing VECI label by hand.
  4. Remove any remaining label adhesive with adhesive remover.
  5. Clean entire label area (2) with isopropyl alcohol and allow to dry (Fig. 2).
  6. Ensure the information printed on the replacement label (1) reflects the equipment content of the vehicle it is being placed on (Fig. 2).
    - a. (DD) 3500 Cab Chassis with sales codes (ETK) plus (TTV) or (TV2) or (TV3), install label following instructions below.
    - b. (DP) 4500/5500 Cab Chassis with sales codes (ETK) plus (TUV) or (TUY), install label following instructions below.
    - c. (DP) 4500/5500 Cab Chassis with sales codes (ETK) and (TUZ), install label following instructions below.

- 7. Position replacement label (1) as near as possible to the original label location (2) (Fig. 2).



**Fig. 2 VECI Label Location**

- 1 - VECI Label
- 2 - Label Location

- 8. Remove all visible wrinkles and bubbles by wiping label with a gloved hand or a squeegee.

**POLICY:**

Reimbursable within the provisions of the warranty.

**TIME ALLOWANCE:**

Labor Operation No:	Description	Skill Category	Amount
25-11-01-99	Replace VECI label/sticker (0 - Low Skilled)	6- Electrical And Body Systems	0.2 Hrs.

**FAILURE CODE:**

ZZ	Service Action
----	----------------