



**NUMBER:** 23-001-14

**GROUP:** Body

**DATE:** January 03, 2014

*This bulletin is supplied as technical information only and is not an authorization for repair. No part of this publication may be reproduced, stored in a retrieval system, or transmitted, in any form or by any means, electronic, mechanical, photocopying, or otherwise, without written permission of Chrysler Group LLC.*

**THIS SERVICE BULLETIN IS ALSO BEING RELEASED AS RAPID RESPONSE TRANSMITTAL (RRT) 14-001. ALL APPLICABLE UN-SOLD RRT VIN's HAVE BEEN LOADED. TO VERIFY THAT THIS RRT SERVICE ACTION IS APPLICABLE TO THE UN-SOLD VEHICLE, USE VIP OR PERFORM A VIN SEARCH IN TECHCONNECT. FOR VEHICLES NOT INCLUDED IN THE RRT VIN LIST, APPLICATION OF THIS SERVICE BULLETIN TO SOLD UNITS IS BASED UPON THE CUSTOMER EXPERIENCING THE SYMPTOM/CONDITIONS. ALL REPAIRS ARE REIMBURSABLE WITHIN THE PROVISIONS OF WARRANTY.**

***SUBJECT:***

Wind Noise Left Front Door

***OVERVIEW:***

This bulletin involves installing foam at the upper rear corner of the left front door window run channel.

***MODELS:***

2013 - 2014 (JS) Avenger

**NOTE: This bulletin applies to vehicles built on or after May 1, 2013 (MDH 0501XX) and on or before September 26, 2013 (MDH 0926XX).**

***SYMPTOM/CONDITION:***

The customer may note wind noise coming from the left front door.

***DIAGNOSIS:***

If a customer's VIN is listed in VIP or your RRT VIN list, perform the repair. For all other customers that describe the symptom/condition, perform the Repair Procedure.

***PARTS REQUIRED:***

| Qty.  | Part No.   | Description |
|-------|------------|-------------|
| 1(AR) | 05019057AA | Foam Tape   |

**NOTE: One piece of foam tape will service 2 vehicles.**

***REPAIR PROCEDURE:***

1. Lower the left front door window.

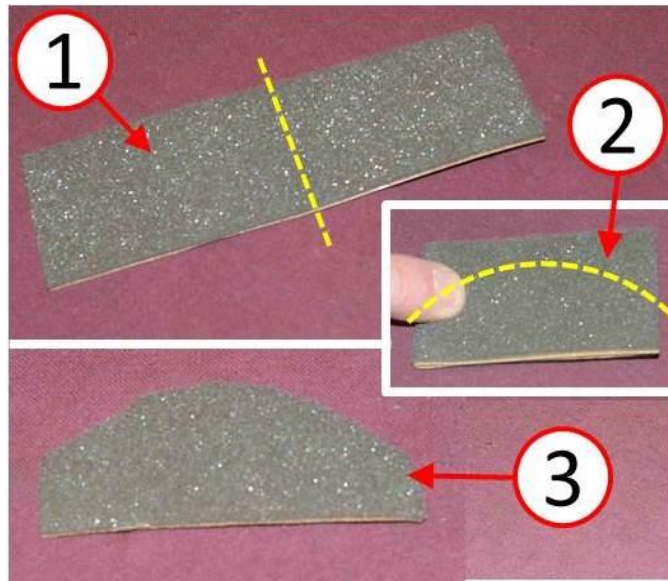
2. Remove the window run channel seal from of the upper B-pillar corner of the left front door window run channel ([Fig. 1](#)).



***Fig. 1 Remove Window Run Channel Seal***

1 - Window Run Channel Seal

- 
3. Cut the foam piece in half (1). Trim one half of the foam piece (2) to match the contour (3) of the upper window run channel corner ([Fig. 2](#)).



**Fig. 2 Cut Foam Piece**

- 1 - Full Foam Piece
- 2 - Half Foam Piece
- 3 - Contoured Foam Piece

- 
4. Install the contoured foam piece in the upper B-pillar corner of the left front door window run channel. The foam piece curved contoured edge should not extend beyond the area covered by the window run channel seal ([Fig. 3](#)).

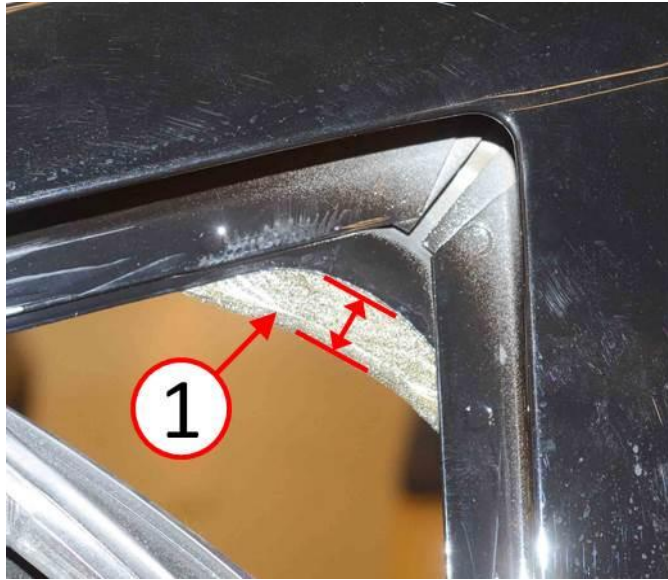


**Fig. 3 Foam Piece Installed**

- 1 - Contoured Foam Piece
-

5. As viewed from the outside of the door, the foam piece should extend beyond the corner by approximately 13 mm (0.5 In.) ([Fig. 4](#)).

**NOTE: Do NOT trim or remove this excess foam tape, it will compress upon installation of window run channel seal.**



***Fig. 4 Foam Piece Overlap***

1 - Foam Piece Overhang

---

6. Reinstall the window run channel seal to the door window run channel ([Fig. 5](#)).



**Fig. 5 Install Run Channel Seal**

1 - Window Run Channel Seal

7. Ensure the customer's wind noise concern has been resolved.

**POLICY:**

Reimbursable within the provisions of the warranty.

**TIME ALLOWANCE:**

| Labor Operation No: | Description  | Skill Category                  | Amount   |
|---------------------|--|---------------------------------|----------|
| 23-33-20-9F         | Install Foam Tape To Window Run Channel (1 - Semi-Skilled) | 6 - Electrical And Body Systems | 0.3 Hrs. |

**FAILURE CODE:**

|    |                |
|----|----------------|
| ZZ | Service Action |
|----|----------------|

**PART REIMBURSEMENT DETAIL:**

| Part No:  | Description      |
|-----------|------------------|
| FSAR12457 | 1/2 Of Foam Tape |

**NOTE: This part number is for reimbursement only and will need to be claimed for 1/2 the value of Part No. 05019057AA or it will be rejected.**