

Fault message in instrument cluster "Additional Battery - Service Required" - FC B11C11B

Topic number	LI54.10-P-058943
Version	5
Design group	54.10 Battery, voltage supply, voltage converter
Date	10-15-2014
Validity	W166 with SA code "B03" ECO start/stop up to VIN end no. A486472 X166 with SA code "B03" ECO start/stop up to VIN end no. A486532 BR463 with SA code "MJ7" ECO start/stop as of XZ2 (Model year 2013) up to VIN end no. X228261
Reason for change	Validity for W/X 166 adjusted; W166 with SA code "B03" ECO start/stop up to VIN end no. A486472; X166 with SA code "B03" ECO start/stop up to VIN end no. A486532
Reason for block	

Complaint:

Fault message in instrument cluster "Additional Battery - Service Required".

Cause:

Electrical fault in ECO start/stop function additional battery

Remedy:

If the SAM (N10) contains the fault code "B11C11B - The additional battery has a malfunction. The limit value for the resistance is exceeded", then the ECO start/stop backup battery must be replaced.

In this special case, the Midtronics test must not be performed because the Midtronics test result cannot indicate the cause of the fault.

This case is an absolute special case with these specific vehicles and is only to be handled with this fault code with regard to the Midtronics test; it is not applicable to other damage profiles or other vehicles. The WMR/EWMR article 04-02-020 continues to apply for all other damage types and vehicles.

The initial quick test log with corresponding fault code is to be filed in a tamperproof manner, and the fault code must be noted in the message field of the warranty claim.

Note: If, in the vehicles defined here, a problem arises with the ECO start/stop function additional battery with the part number A0009829308 currently in use, then the WMR/EWMR article 04-02-020 applies without qualification and therefore a Midtronics test is absolutely essential!

When installing object number A0009829308 on BR166, the retaining lug on the battery bracket must be bent upwards by 90° as described in attachment "2".

Attachments	
File	Description
holder_backup_battery_01.jpg	Backup battery bracket
holder_backup_battery_02.jpg	Backup battery bracket modified for installation of replacement part A0009829308!

Symptoms
Power generation / Engine management / Engine start/stop / Does not start
Power generation / Engine management / Engine start/stop / No automatic engine start
Power generation / Engine management / Engine start/stop / Engine does not turn off

Control unit/fault code		
Control unit	Fault code	Fault text
SAM - Signal acquisition and actuation module (N10) (CBC)	B11C11B	The additional battery has a malfunction. The limit value for resistance has been exceeded.

Parts						
Part number	ES1	ES2	Designation	Quantity	Note	EPC
A 000 982 93 08			Backup battery	1		X

Work units				
Op. no.	Operation text	Time	Damage code	Note
54-1011	PERFORM QUICK TEST		54027 73	
54-1138	REMOVE/INSTALL ADDITIONAL BATTERY FOR ECO START/STOP FUNCTION		54027 73	
54-1150	REPLACE BATTERY (BATTERY REMOVED)		54027 73	

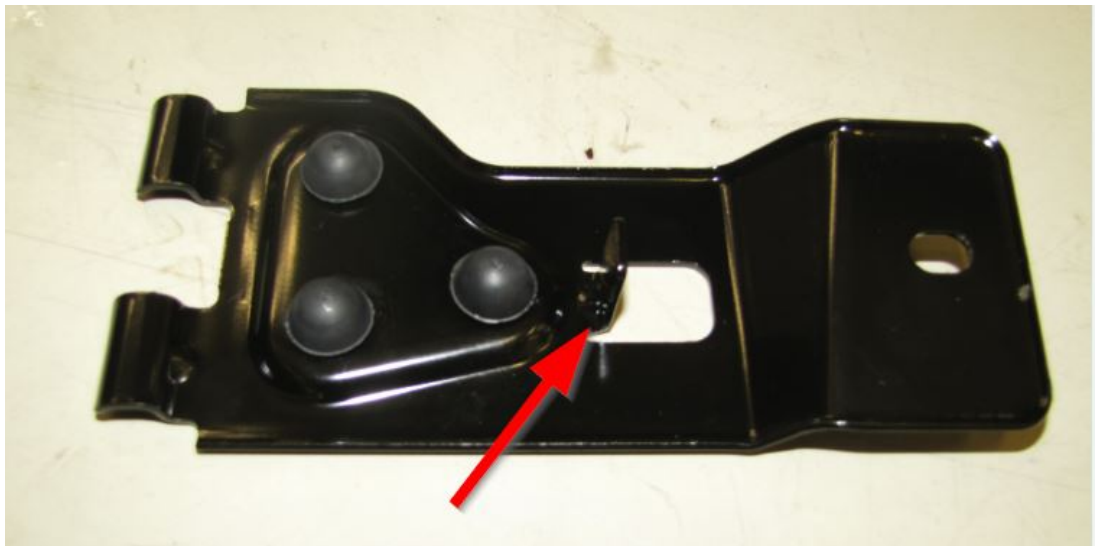
Validity		
Vehicle	Engine	Transmission
463.272	*	*
463.273	*	*
463.274	*	*
GL (166)	*	*
M (166)	*	*

Full model designation breakdown		
Vehicle	Engine	Transmission
166.003	651.960	722.908
166.004	651.960	722.908
166.023	642.826	722.903
166.023	642.826	725.031
166.024	642.826	722.903
166.024	642.826	725.031

166.055	276.955	722.906
166.056	276.821	722.904
166.056	276.821	725.031
166.057	276.955	722.906
166.057	276.955	725.031
166.058	276.955	722.906
166.058	276.955	725.031
166.062	276.821	722.904
166.073	278.928	722.909
166.073	278.928	725.031
166.073	278.928	725.032
166.073	278.928	725.033
166.074	157.982	722.905
166.074	157.982	722.931
166.823	642.826	722.903
166.823	642.826	725.031
166.824	642.826	722.903
166.824	642.826	725.031
166.856	276.821	722.904
166.856	276.821	725.031
166.864	276.821	722.904
166.864	276.821	725.031
166.872	278.928	722.909
166.872	278.928	725.031
166.872	278.928	725.032
166.872	278.928	725.033
166.873	278.928	722.909
166.873	278.928	725.031
166.873	278.928	725.032
166.873	278.928	725.033
166.874	157.982	722.905
166.874	157.982	722.931
463.272	157.984	722.905
463.273	157.984	722.905
463.274	279.982	722.932

Attachments

holder_backup_battery_01.jpg:



holder_backup_battery_02.jpg:

