



Service Bulletin

PRELIMINARY INFORMATION

Subject: Premature Catalytic Converter Failures

Models: 2015 and Prior GM Cars and Gasoline-Powered MST Light Duty and HD Trucks

This PI was superseded to update Models. Please discard PIP5232.

The following diagnosis might be helpful if the vehicle exhibits the symptom(s) described in this PI.

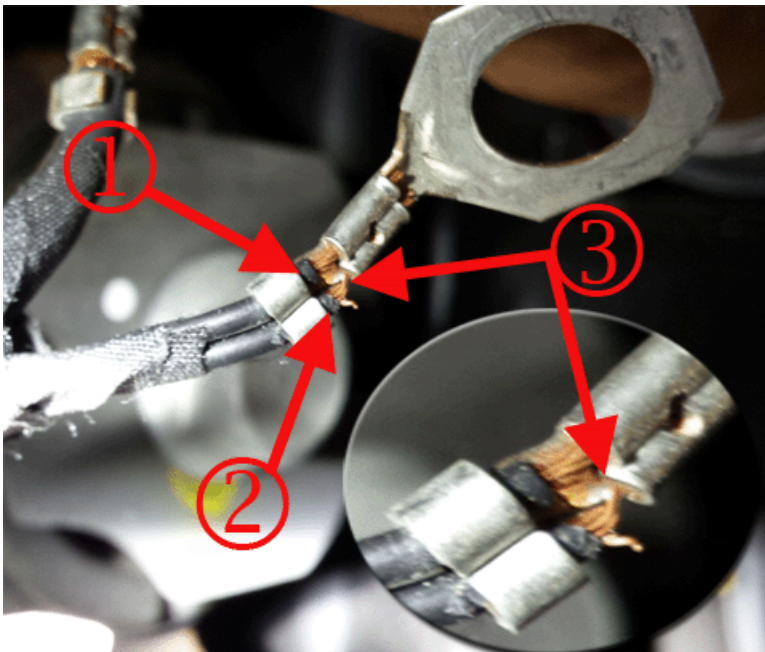
Condition/Concern

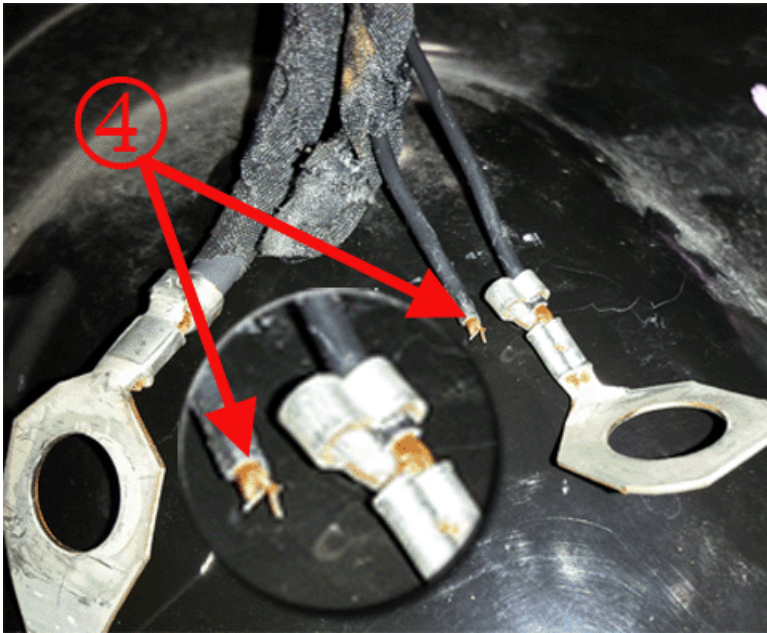
Technicians may encounter a concern where the catalytic converter that has come apart or has set a P0420 and/or P0430.

Recommendation/Instructions

If you believe the catalytic converter has failed and with no apparent reason, it is recommended to inspect for a poor crimp at circuit terminal on the engine bank with the concern.

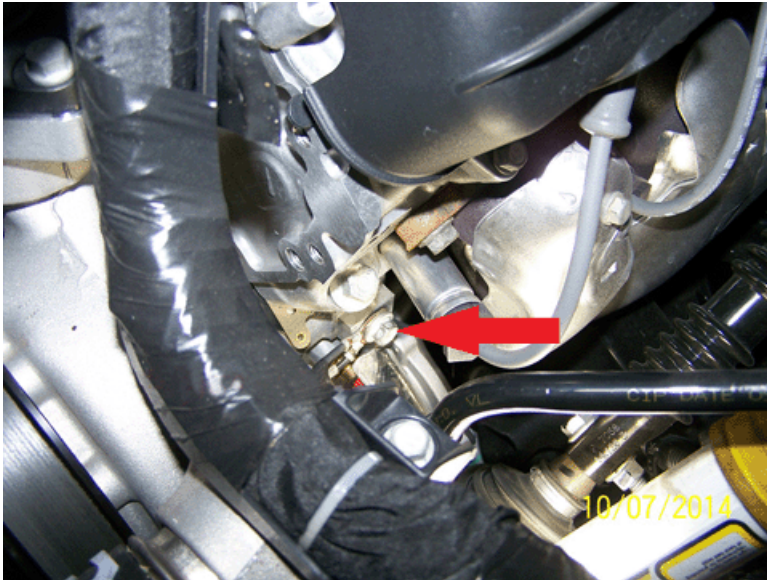
These grounds are for the ignition system, fuel injector or the ECM.





Technicians should inspect the ground for possible corrosion or damage at ground terminal ring, fasteners and grounding surfaces.

If no corrosion or damage is found, tighten the ground bolt to the proper torque



Warranty Information

For wiring repairs covered under warranty, please refer to latest version of bulletin 10-00-89-005 for warranty information on wire/connector repairs.

Please follow this diagnostic or repair process thoroughly and complete each step. If the condition exhibited is resolved without completing every step, the remaining steps do not need to be performed.

GM bulletins are intended for use by professional technicians, NOT a "do-it-yourselfer". They are written to inform these technicians of conditions that may occur on some vehicles, or to provide information that could assist in the proper service of a vehicle. Properly trained technicians have the equipment, tools, safety instructions, and know-how to do a job properly and safely. If a condition is described, DO NOT assume that the bulletin applies to your vehicle, or that your vehicle will have that condition. See your GM dealer for information on whether your vehicle may benefit from the information.



WE SUPPORT VOLUNTARY TECHNICIAN CERTIFICATION