


Front License Plate & Mounting Bracket Installation

Service Category General

Section Pre-Delivery Service

Market USA

Lexus Supports
ASE Certification 

Applicability

YEAR(S)	MODEL(S)	ADDITIONAL INFORMATION
2015	RC350	

REVISION NOTICE

December 12, 2014 Rev1:

- The entire bulletin has been updated.

Any previous printed versions of this bulletin should be discarded.

Introduction

The front license plate mounting bracket and two self-tapping screws for the 2015 model year RC 350 are placed in the luggage compartment of the vehicle at the assembly plant. For states that require a Front License Plate, install the bracket and bolts on the bumper cover during Pre-Delivery Service (PDS) according to the following procedures.

Warranty Information

OP CODE	DESCRIPTION	TIME	OFP	T1	T2
N/A	Not Applicable to Warranty	-	-	-	-

Parts Information

PART NUMBER	PART NAME	QTY
PT491-50030	License Plate Bolt	2

Front License Plate & Mounting Bracket Installation

Required Tools & Equipment

REQUIRED TOOLS & MATERIAL	QUANTITY
Oscillating Cutting Tool (Harbor Freight Item No. 68861, or Equivalent)	1
2-1/2" Blade (for Oscillating Cutting Tool, Harbor Freight Item No. 61818, or Equivalent)	1
11-inch Cable Ties (UV-rated for outdoor use, 50+ lbs. tensile strength)	2
10 mm Bolts	2

NOTICE

Dealers doing business in states that require installation of front license plates will receive a supply of cable ties and 10 mm long license plate bolts.

ONLY USE THE SUPPLIED 10 MM BOLTS for mounting a license plate without a top frame on RC 350 F-Sport models.

NOTE

- Use an oscillating cutting tool and blade such as the one pictured, sourced from Harbor Freight Tools (harborfreight.com):
 - Oscillating Tool: Item No. 68861
 - 2-1/2" Blade: Item No. 61818
- DO NOT use a cut-off tool.



Front License Plate & Mounting Bracket Installation

Mounting Bracket Inspection/Preparation

NOTICE

There are 2 separate installation procedures detailed in this bulletin:

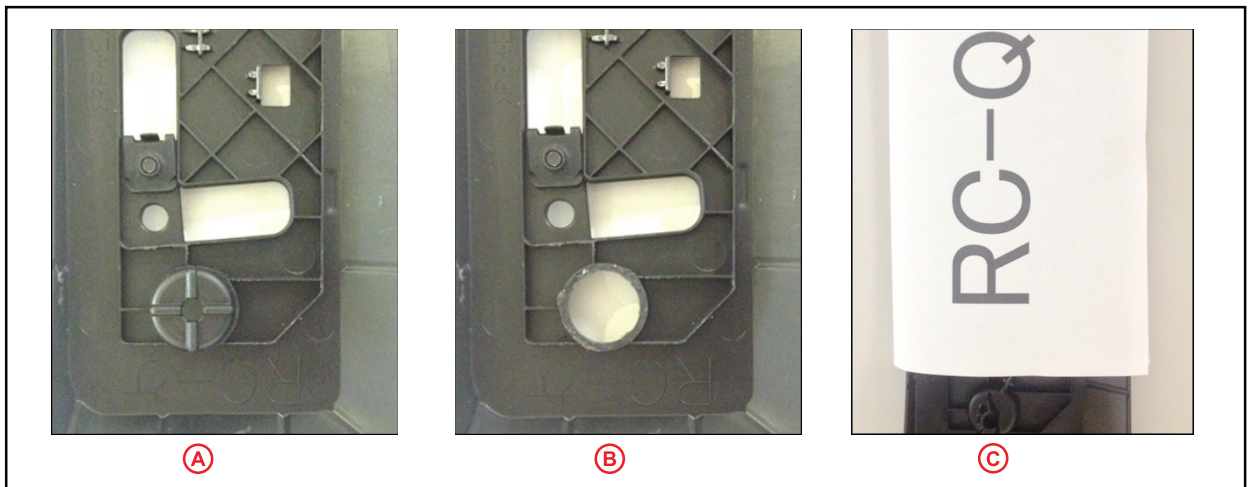
- Installation Procedure 1 – for bracket types A (after modification) & B (page 5)
- Installation Procedure 2 – for bracket types C & D (page 7)

NOTE

- Bracket types A, B, & C are to be installed on RC 350 F-Sport models ONLY.
- Bracket type D is to be installed on RC 350 models other than F-Sport ONLY.

1. Inspect the mounting bracket molded-in posts to identify which bracket type the vehicle is equipped with.

Figure 1. Bracket Types for RC 350 (F-Sport ONLY)



- **A** — Go to step 2 to modify the bracket.
- **B** — Go to Installation Procedure on Page 5.
- **C** — Go to Installation Procedure on Page 7.

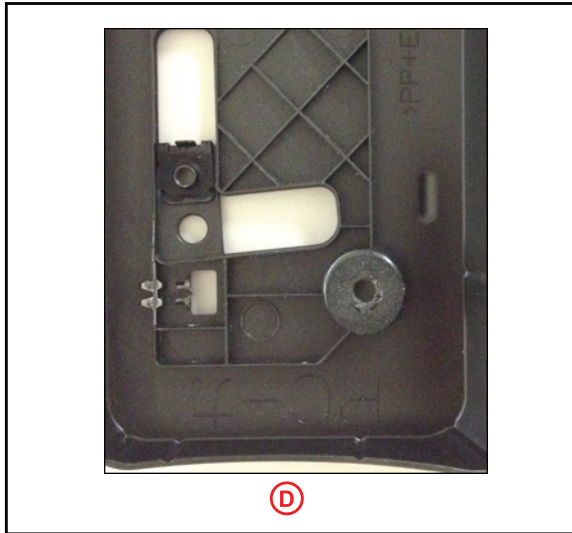
HINT

Bracket C will have a wrapper marked "RC-Q".

Front License Plate & Mounting Bracket Installation

Mounting Bracket Inspection/Preparation (Continued)

Figure 2. Bracket Type for RC 350 (Models OTHER than F-Sport)



- **D** — Go to Installation Procedure on Page 7.

2. Modify the mounting bracket.

- A. Using an oscillating cutting tool or equivalent, cut off the molded-in posts flush with the back of the bracket, as shown.

CAUTION

Use appropriate personal protective equipment (PPE) and procedures, based on the tool used.

NOTICE

Ensure the working surface is smooth and will NOT cause scratches to the face of the bracket.

Figure 3.



- B. Deburr the cut surfaces.

Front License Plate & Mounting Bracket Installation

Installation Procedure 1 – Bracket Type A or B

NOTE

Use this procedure for mounting bracket types A (ONLY after modification) & B ONLY.

NOTICE

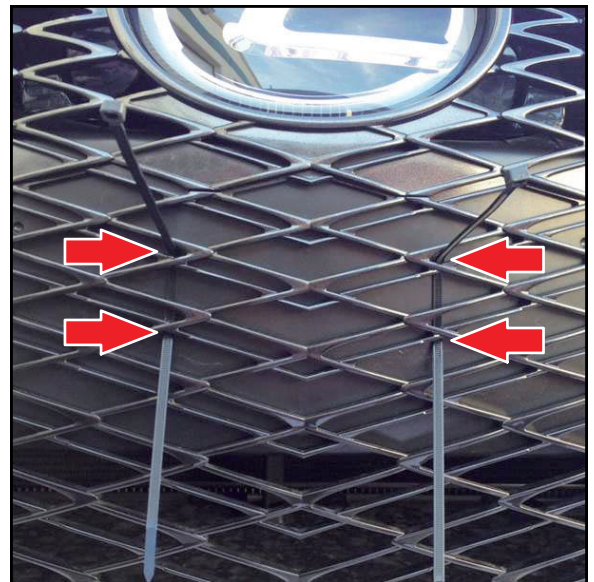
Please remove and discard the self-tapping screws that are packaged with the mounting bracket, as they will NOT be used in this procedure.

1. Thread cable ties through the grille in the locations shown.

NOTE

Pull mesh slightly to provide clearance for the cable ties and to prevent marking the bumper.

Figure 4.

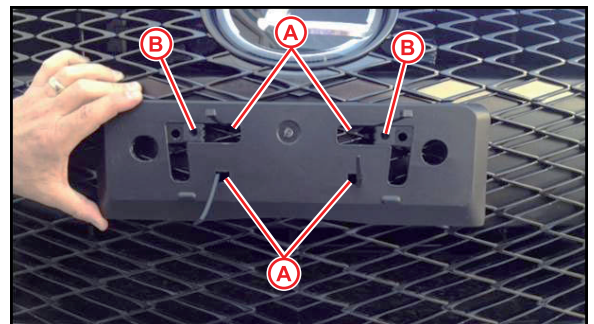


2. Position mounting bracket over radiator grille, align holes "A" with the cable tie ends and thread through the holes.

NOTE

- Holes "A" are used to install the mounting bracket to the radiator grille.
- Holes "B" are used for installation of the front license plate to the mounting bracket.

Figure 5.



NOTICE

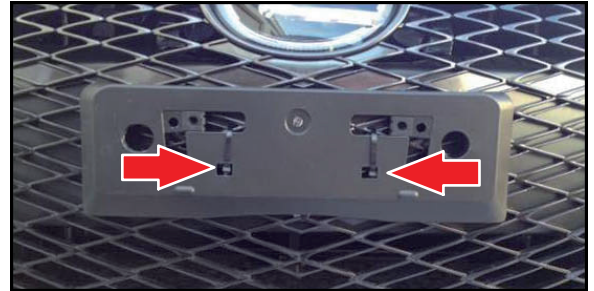
Do NOT pre-drill holes in the dimples.

Front License Plate & Mounting Bracket Installation

Installation Procedure 1 – Bracket Type A or B (Continued)

3. Tighten cable ties while pushing lock end fully into lower hole. Finish tightening so ties are flush with bracket surface and bracket is firmly secured and straight. Cut off cable tie excess.

Figure 6.



NOTICE

Do NOT overtighten the cable ties.

4. Install the front license plate to the mounting bracket at holes “B” using 2 non-corroding bolts as specified below.

NOTICE

To prevent bolt contact/damage with grille mesh, ONLY use the following bolts to install the license plate.

License Plate ONLY:

Nominal Length: 10.0 mm (0.39 in.)

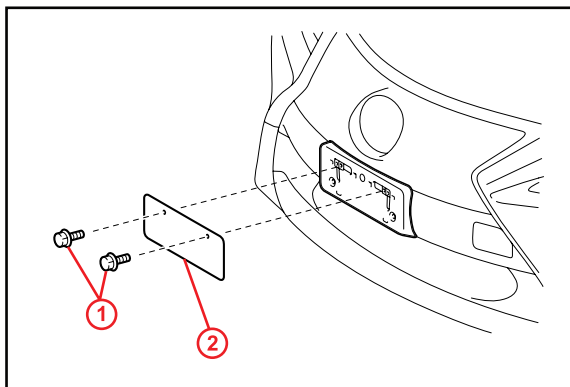
Diameter: 6.0 mm (0.24 in.)

License Plate WITH Frame:

License Plate Bolt (P/N PT491-50030) Nominal Length: 16.0 mm (0.63 in.)

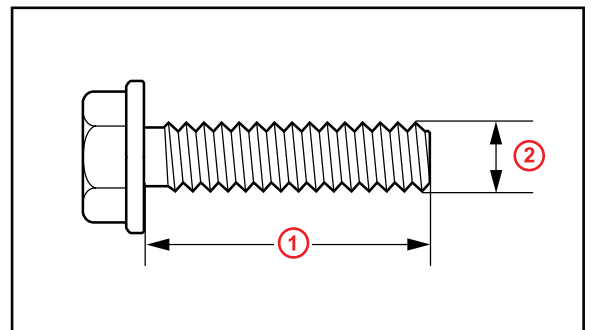
Diameter: 6.0 mm (0.24 in.)

Figure 7.



1	Non-corroding Bolts into Holes “B”
2	License Plate

Figure 8.



1	Nominal Length
2	Diameter

Front License Plate & Mounting Bracket Installation

Installation Procedure 2 – Bracket Type C or D

NOTE

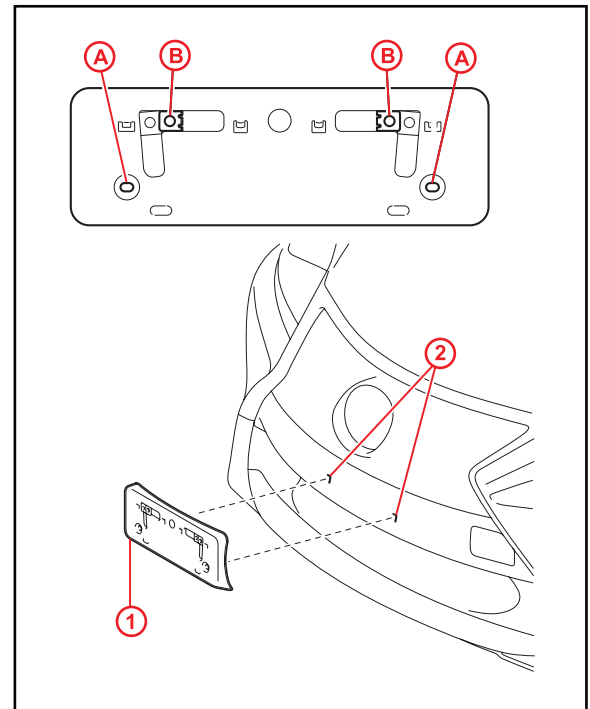
Use this procedure for mounting bracket types C & D ONLY.

1. Position the front license plate mounting bracket over radiator grille.
2. Align holes "A" of the mounting bracket with the dimples on the radiator grille.

NOTE

- Holes "A" are used to install the mounting bracket to the radiator grille.
- Holes "B" are used for installation of the front license plate to the mounting bracket.
- Do NOT pre-drill holes in the dimples.
- Do NOT overtighten the self-tapping screws.

Figure 9.



1	Mounting Bracket
2	Dimples

Front License Plate & Mounting Bracket Installation

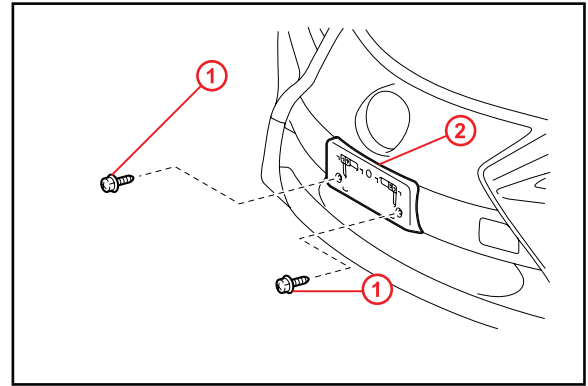
Installation Procedure 2 – Bracket Type C or D (Continued)

3. Install the mounting bracket to the radiator grille at holes “A” using the 2 supplied self-tapping screws.

Figure 10.

NOTE

- Do NOT pre-drill holes in the dimples.
- Do NOT over-tighten the self-tapping screws.



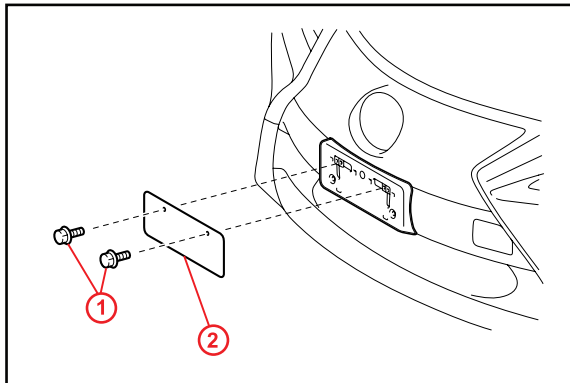
1	Self-tapping Screws into Holes “A”
2	Mounting Bracket

4. Install the front license plate mounting bracket at holes “B” using two non-corroding bolts with the following dimensions:

Nominal Length: 15.0 mm (0.59 in.)

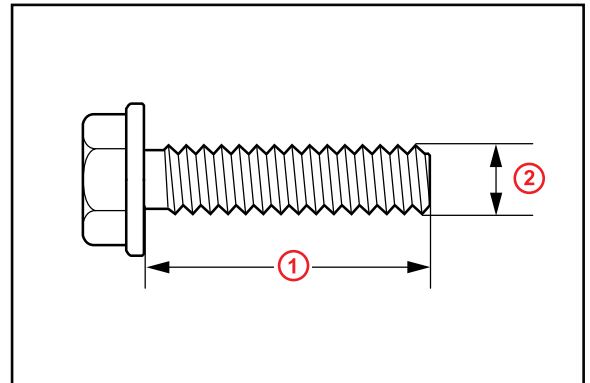
Diameter: 6.0 mm (0.24 in.)

Figure 11.



1	Non-corroding bolts into Holes “B”
2	License Plate

Figure 12.



1	Nominal Length
2	Diameter