

Subject

# U660 Remanufactured Transaxle Lower Oil Cooler Tube Union

Market

USA

Service Category

Drivetrain

Section

Automatic Transmission/Transaxle

Applicability

U660 Equipped Vehicles

## APPLICABLE VEHICLES

2010-2014

RX350

2007-2014

ES350

## CONDITION

Prior to installing remanufactured U660 transaxles, it is necessary to remove the lower oil cooler tube union from the original transaxle case and install it into the reman unit. A **NEW** O-ring and printed installation instructions are supplied in a separate bag with the reman unit. An instruction tag is also affixed to the unit.

Figure 1



New O-ring and Installation Instruction Sheet

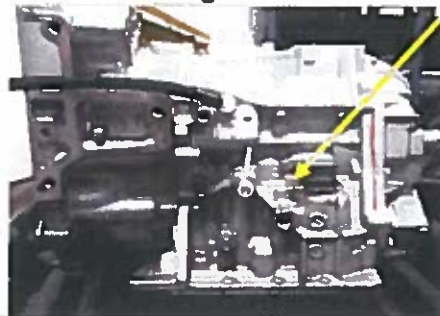
Instruction Tag

## RECOMMENDATIONS

1. Remove the oil cooler tube union from the original transaxle case.
2. Remove the O-ring from the oil cooler tube union.
3. Coat the **NEW** O-ring with ATF and install it onto the oil cooler tube union.
4. Install the oil cooler tube union in the reman transaxle case. Torque: 27 N·m {275 kgf·cm, 20ft·lb}

**Note:** During the transition period, dealerships may receive transmissions with the current or new process and both can be utilized for repairs.

Figure 2



Lower Oil Cooler Tube Union Installation Location

## LINK REFERENCES

This Tech Tip does not contain any link references

Subject

Market

**U660 Remanufactured Transaxle Lower Oil Cooler Tube  
Union**

USA

Applicability

U660 Equipped Vehicles