

# Second Row Seat Squeak

Service Category Vehicle Interior

Section Seat

Market USA

Lexus Supports ASE Certification 

## Applicability

YEAR(S)	MODEL(S)	ADDITIONAL INFORMATION
2010 – 2013	GX460	

## Introduction

Some 2010 – 2013 model year GX 460 vehicles may exhibit a squeak noise coming from the second row seats when driving over uneven terrain.

The bracket for the inside hinge of the 60% second row seat may rub the seat frame. Follow the procedure outlined below to address this condition.



## Production Change Information

MODEL	PRODUCTION CHANGE EFFECTIVE VIN
GX 460	JTJJM7FX#D5062180
	JTJBM7FX#D5062135

## Second Row Seat Squeak

### Warranty Information

OP CODE	DESCRIPTION	TIME	OFF	T1	T2
BD1402	Insulate Rear Seat Bracket	0.6	72731-60010	91	57

#### APPLICABLE WARRANTY

- This repair is covered under the Lexus Basic Warranty. This warranty is in effect for 48 months or 50,000 miles, whichever occurs first, from the vehicle's in-service date.
- Warranty application is limited to occurrence of the specified condition described in this bulletin.

### Parts Information

PART NUMBER	PART NAME	QTY
08231-00801	Interior Noise Kit	1

### Required Tools & Equipment

SPECIAL SERVICE TOOLS (SST)	PART NUMBER	QTY
Plastic Pry Tool Kit*	<a href="#">00002-06020-02</a>	1

REQUIRED TOOLS & MATERIAL	QUANTITY
T45 TORX® Socket Wrench	1

\* Essential SST.

#### NOTE

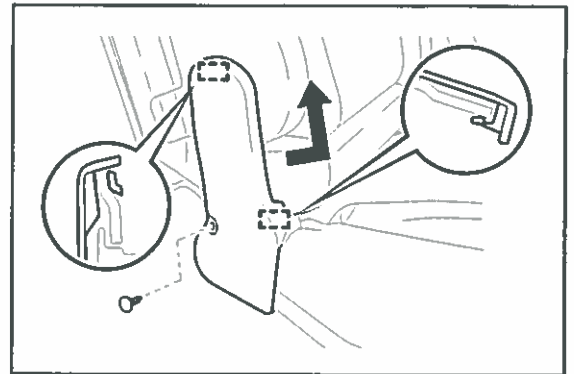
Additional SSTs may be ordered by calling 1-800-933-8335.

## Second Row Seat Squeak

### Repair Procedure

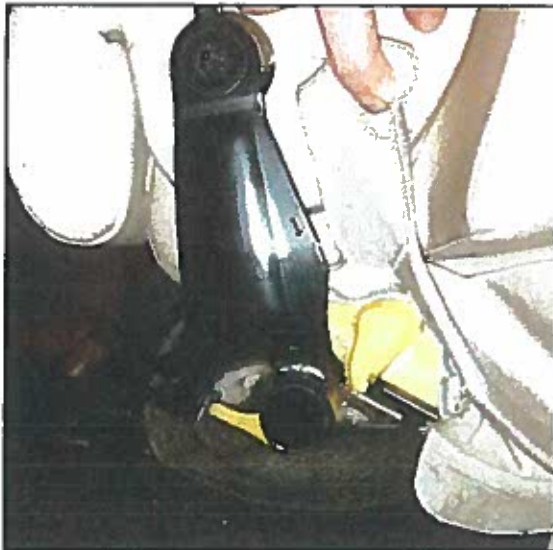
1. Test drive the vehicle for a noise from the 2nd row inner bracket for the 60% seat.
2. Remove the center seat hinge cover.

**Figure 1.**



3. Confirm that a noise is being generated by two surfaces rubbing, as shown below.

**Figure 2. Approximate Vantage Point (Reposition Foam to Access View)**



**Figure 3. Up-Close View**



4. Remove the 60% second row seat.

Refer to the Technical Information System (TIS), applicable model and model year Repair Manual:

- [2010 / 2011 / 2012 / 2013](#) GX 460:  
*Vehicle Interior – Seat – “Seat: Rear No. 1 Seat Assembly (for 60/40 Split Slide Walk-in Seat Type LH Side): Removal”*

## Second Row Seat Squeak

### Repair Procedure (Continued)

5. Position the seat as shown to access the Rear Seat Reclining Bracket.

**Figure 4.**

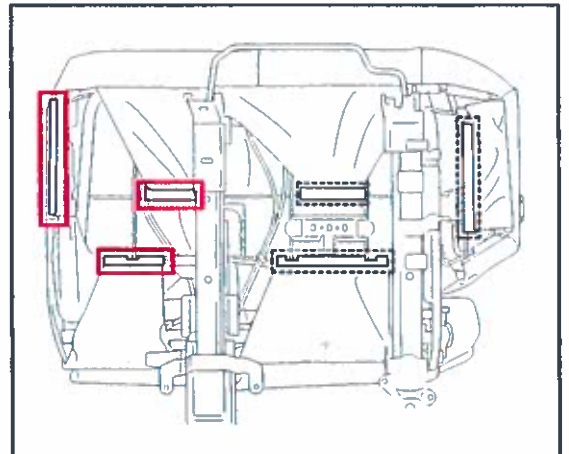


**NOTICE**

Be sure to protect the seat during service by utilizing a clean/covered work surface.

6. Partially remove the rear seatback lower cushion cover at the locations shown.

**Figure 5.**



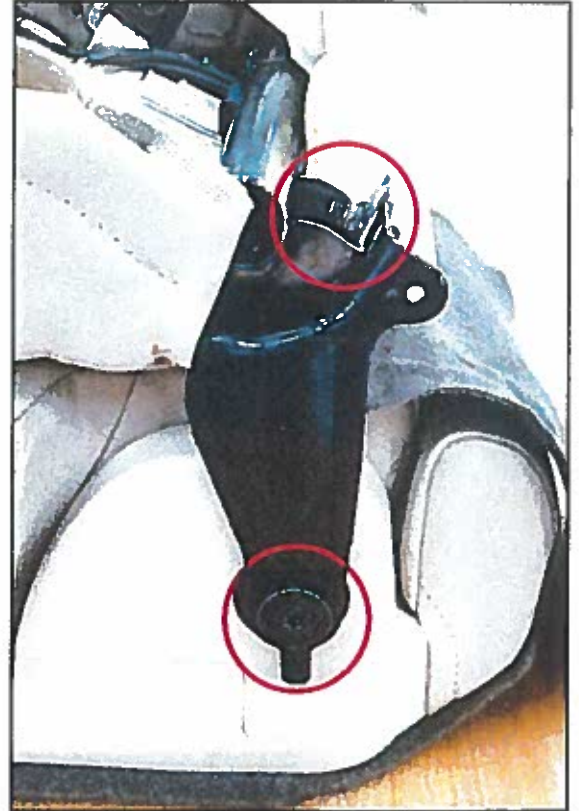
## Second Row Seat Squeak

---

### Repair Procedure (Continued)

7. Remove the right Rear Seat Reclining Bracket.
  - A. Using a T45 TORX<sup>®</sup> Socket Wrench, remove the Rear Seat Reclining Bracket with the TORX<sup>®</sup> bolt.
  - B. Remove the 12 mm bracket bolt.

**Figure 6.**



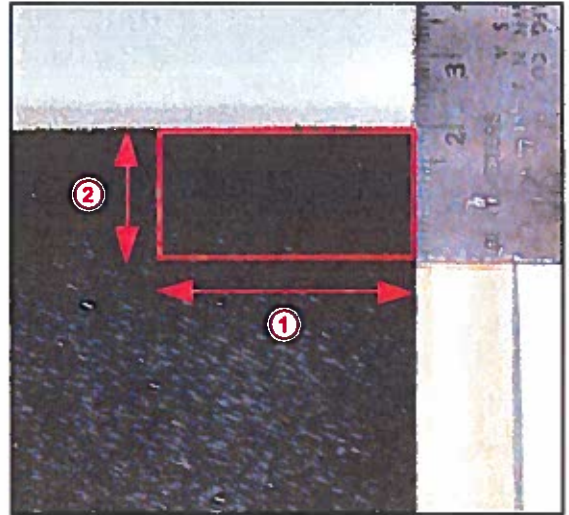


## Second Row Seat Squeak

### Repair Procedure (Continued)

- From the Interior Noise Kit, cut a section of felt to the following dimensions:  
Length: 40 mm  
Width: 20 mm  
Thickness: 1 mm

Figure 7.



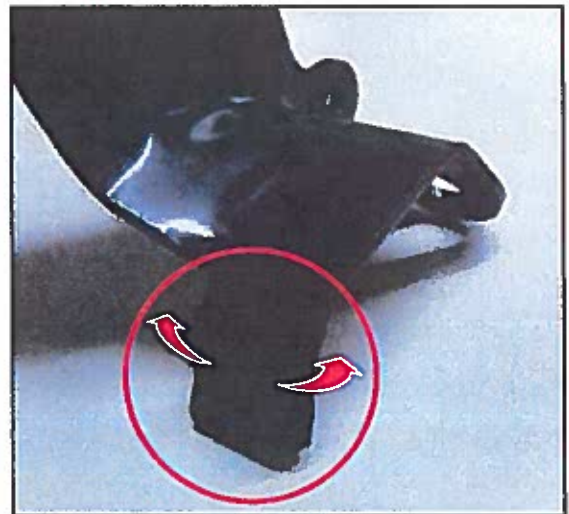
1	40 mm
2	20 mm

- Apply the felt to the bracket as shown.

Figure 8.



Figure 9.



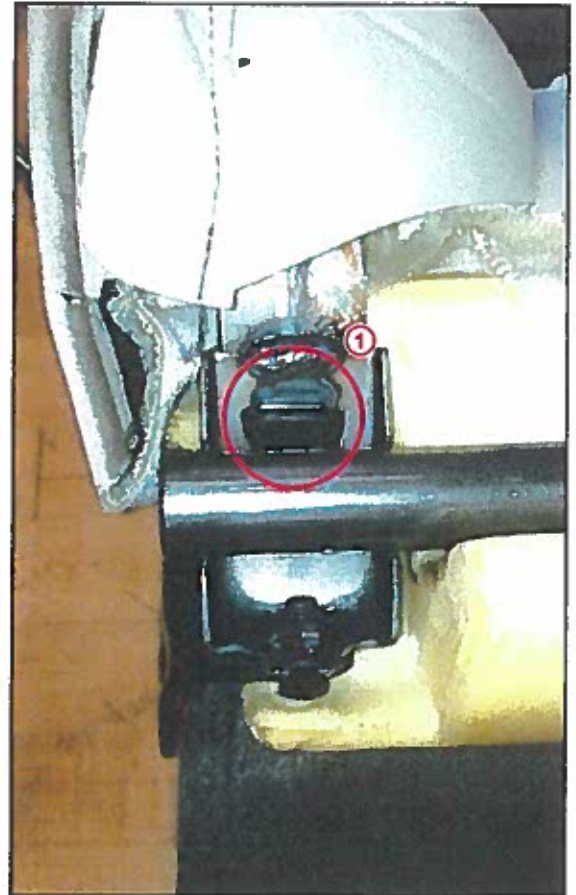
## Second Row Seat Squeak

---

### Repair Procedure (Continued)

10. Reassemble the bracket to the 60% second row seat.
  - A. Using a T45 TORX® Socket Wrench, install the Rear Seat Reclining Bracket with the TORX® bolt.  
Torque: 21 N\*m (214 kgf\*cm, 15 ft\*lbf)
  - B. Install the 12 mm bolt.  
Torque: 21 N\*m (214 kgf\*cm, 15 ft\*lbf)

Figure 10.



1	Bracket Tab
---	-------------

11. Install the seat into the vehicle.

Refer to TIS, applicable model and model year Repair Manual:

- [2010](#) / [2011](#) / [2012](#) / [2013](#) GX 460:  
*Vehicle Interior – Seat – “Seat: Rear No. 1 Seat Assembly (for 60/40 Split Slide Walk-in Seat Type LH Side): Installation”*

12. Test drive the vehicle to confirm the squeak noise has been corrected.

