

Shift Lever Slide Cover Deformation and Noise During Operation

Service Category Drivetrain

Section Automatic Transmission/Transaxle

Market USA

Toyota Supports
 ASE Certification 

Applicability

YEAR(S)	MODEL(S)	ADDITIONAL INFORMATION
2012 – 2014	Camry, Camry HV	

Introduction

Some 2012 – 2014 model year Camry and Camry HV vehicles equipped with an automatic transmission may exhibit a condition where the shifter assembly slide cover deforms and makes abnormal noise during operation. Use the following Repair Procedure to address this condition.

Production Change Information

This bulletin applies to vehicles produced **BEFORE** the Production Change Effective VINs shown below.

PLANT	MODEL	ENGINE	PRODUCTION CHANGE EFFECTIVE VIN
TMMK	Camry	2AR/2GR-FE	4T1BF1FK#EU786369
	Camry HV	Hybrid	4T1BD1FK#EU115247
SIA	Camry	2AR-FE	4T4BF1FK#ER386368

Warranty Information

OP CODE	DESCRIPTION	TIME	MODEL	OFP	T1	T2
BD1406	R & R Shift Lever Plate	0.4	Camry	35978-06010 58805-06240-B0 58805-06250-E0 58805-06490-B0 58805-06550-C0	28	13
			Camry HV	35978-06020		

APPLICABLE WARRANTY

- This repair is covered under the Toyota Basic Warranty. This warranty is in effect for 36 months or 36,000 miles, whichever occurs first, from the vehicle's in-service date.
- Warranty application is limited to occurrence of the specified condition described in this bulletin.

Shift Lever Slide Cover Deformation and Noise During Operation

Parts Information

MODEL	PART NUMBER		PART NAME	QTY
	PREVIOUS	NEW		
Camry	35978-06010	35978-06011	Indicator, Shift Position	1
Camry HV	35978-06020	35978-06021		
Camry	58805-06240-B0	58805-06241-B0	Panel, Console UPR	1
	58805-06250-E0	58805-06251-E0		
	58805-06490-B0	58805-06491-B0		
	58805-06550-C0	58805-06551-C0		

NOTE

For Camry HV it's NOT necessary to replace the Upper Console Panel assembly.

Repair Procedure

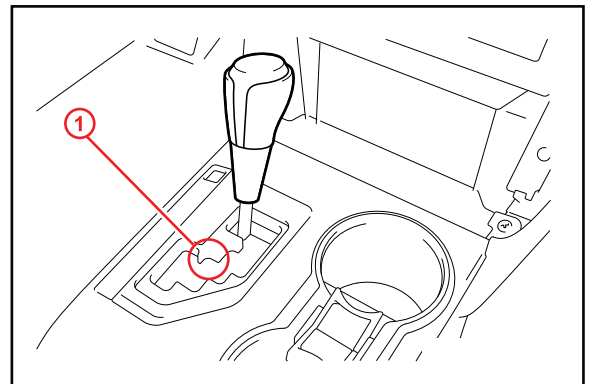
1. Inspect the vehicle for the following conditions:

- Damaged slide cover due to distortion/deformation.
- Difficult to move shifter due to interference between the slide cover and the Upper Console Panel assembly (as shown in Figure 1).
- Abnormal shifter noise during operation.

Does the vehicle present 1 or more of the described conditions?

- **YES** — Continue to step 2 (for Camry) or step 3 (for Camry HV).
- **NO** — This bulletin does NOT apply. Continue diagnosis using the applicable Repair Manual.

Figure 1.



1	Area of Interference
----------	-----------------------------

Shift Lever Slide Cover Deformation and Noise During Operation

Repair Procedure (Continued)

2. For Camry:

Remove and replace the Shift Position Indicator assembly and the Upper Console Panel assembly.

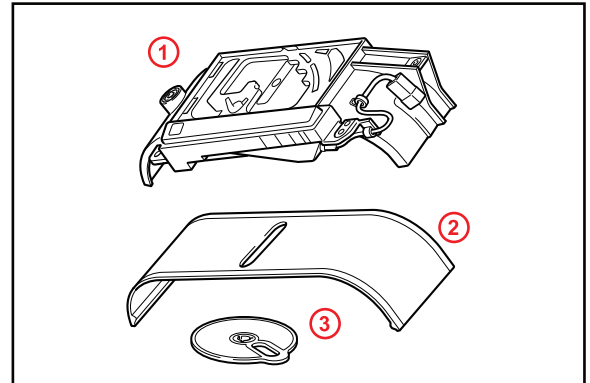
NOTE

Do NOT replace position indicator slide covers No. 1 and 2 without swapping the entire Shift Position Indicator assembly (as shown in Figure 2).

Refer to the Technical Information System (TIS), applicable model and model year Repair Manual:

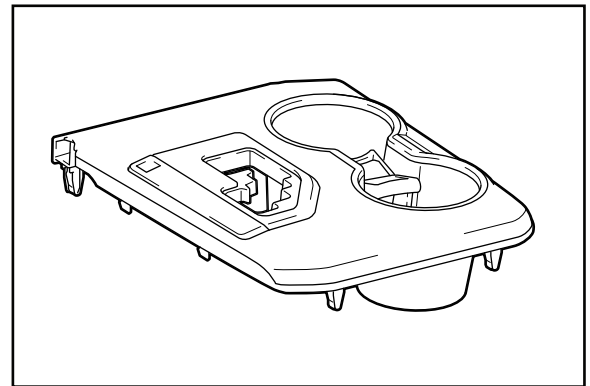
- [2012](#) / [2013](#) / [2014](#) Camry:
Drivetrain – Automatic Transmission/Transaxle – “U660E Automatic Transaxle: Shift Lever: Disassembly”
- [2012](#) / [2013](#) / [2014](#) Camry:
Drivetrain – Automatic Transmission/Transaxle – “U660E Automatic Transaxle: Shift Lever: Reassembly”

Figure 2. Shift Position Indicator Assembly



1	Indicator Shift Housing
2	Position Indicator Slide Cover No. 1
3	Position Indicator Slide Cover No. 2

Figure 3. Upper Console Panel Assembly



Shift Lever Slide Cover Deformation and Noise During Operation

Repair Procedure (Continued)

3. For Camry HV:

Remove and replace the Shift Position Indicator assembly.

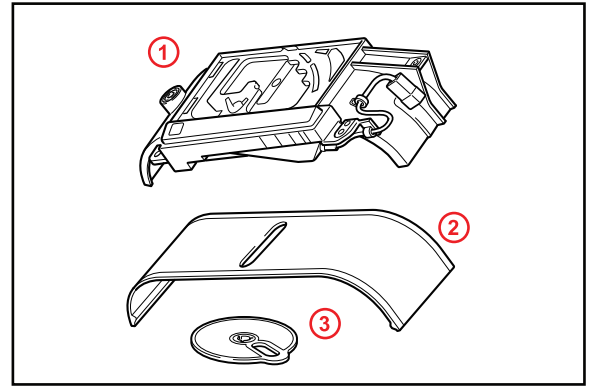
NOTE

Do NOT replace position indicator slide covers No. 1 and 2 without swapping the entire Shift Position Indicator assembly (as shown in Figure 4).

Refer to TIS, applicable model and model year Repair Manual:

- [2012](#) / [2013](#) / [2014](#) Camry HV: *Drivetrain – Automatic Transmission/Transaxle – “U660E Automatic Transaxle: Shift Lever: Disassembly”*
- [2012](#) / [2013](#) / [2014](#) Camry HV: *Drivetrain – Automatic Transmission/Transaxle – “U660E Automatic Transaxle: Shift Lever: Reassembly”*

Figure 4. Shift Position Indicator Assembly



1	Indicator Shift Housing
2	Position Indicator Slide Cover No. 1
3	Position Indicator Slide Cover No. 2

4. Confirm that there is no binding or abnormal noise during operation.