

# Whistle Noise from Exterior Mirror

**Service Category** Vehicle Exterior

**Section** Mirror (ext)

**Market** USA

Toyota Supports  
 ASE Certification 

## Applicability

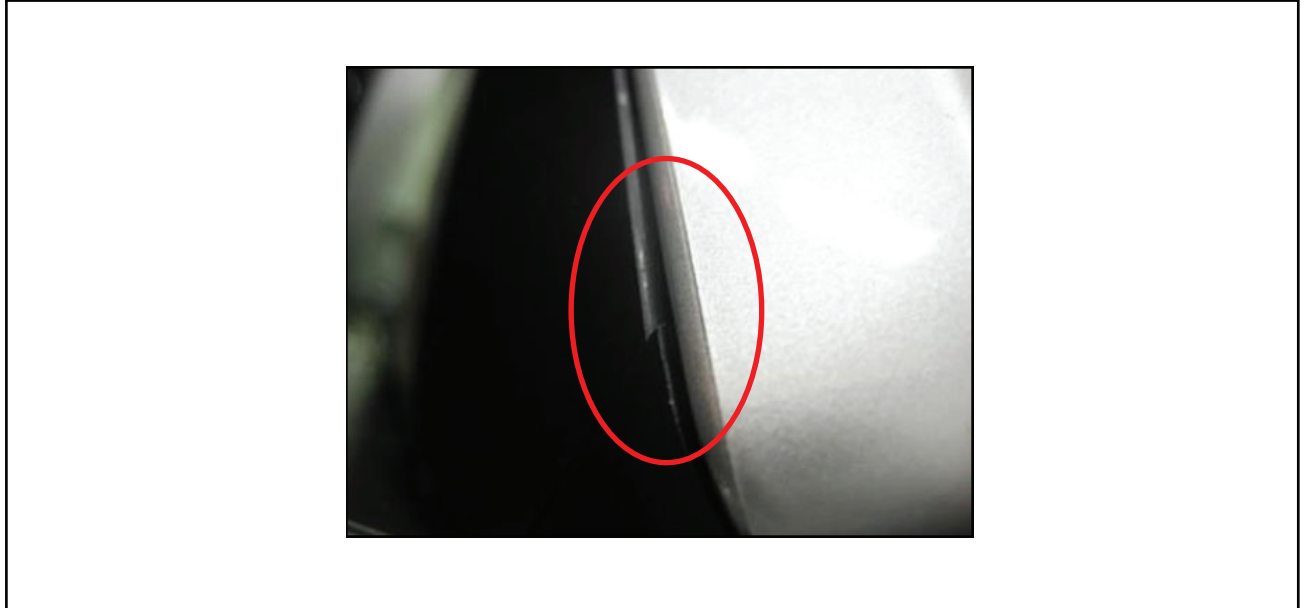
YEAR(S)	MODEL(S)	ADDITIONAL INFORMATION
2014	4Runner	

## Introduction

Some 2014 model year 4Runner vehicles may exhibit a whistle noise coming from the mirror assembly while driving. A gap may be present at the inside corner of the outer mirror cover and mirror housing assembly junction.

Follow the procedure outlined below to address this condition.

**Figure 1.**



## Production Change Information

MODEL	DRIVETRAIN	PRODUCTION CHANGE EFFECTIVE VIN
4Runner	2WD	JTEZU5JR#E5071887
	4WD	JTEBU5JR#E5168877

## Whistle Noise from Exterior Mirror

### Warranty Information

OP CODE	DESCRIPTION	TIME	OFP	T1	T2
BD1405	Insulate Mirror Assembly	0.4	87940-35B60 87910-35B90	59	57
Combo A	Opposite Side	0.2	87940-35B70 87910-35C00		

#### APPLICABLE WARRANTY

- This repair is covered under the Toyota Basic Warranty. This warranty is in effect for 36 months or 36,000 miles, whichever occurs first, from the vehicle's in-service date.
- Warranty application is limited to occurrence of the specified condition described in this bulletin.

### Parts Information

PART NUMBER	PART NAME	QTY
08231-00810	Wind Noise Kit	1

### Repair Procedure

1. Test drive the vehicle to confirm a noise from the mirror assembly.

#### NOTE

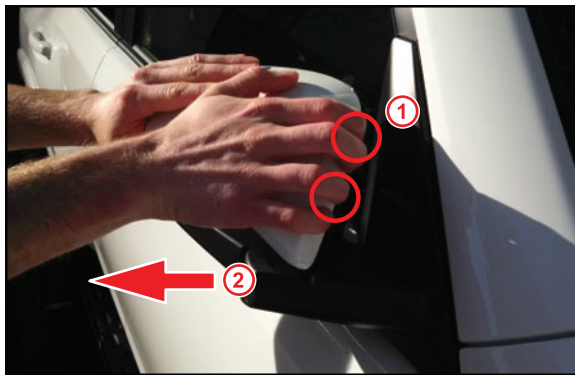
- Confirm that the noise from the outer mirror cover is not related to paint protection film.
- It is possible to service the outer mirror cover without disassembling the mirror assembly.

## Whistle Noise from Exterior Mirror

### Repair Procedure (Continued)

2. Remove the outer mirror cover.
  - A. Apply pressure from the front side of the outer mirror cover to disengage the clips.
  - B. Carefully pull the outer mirror cover away as shown below.

Figure 2.



1	Pressure Points
2	Pull Away Direction

Figure 3.



1	Outer Mirror Cover Clips
---	--------------------------

### NOTICE

Use caution when removing the outer mirror cover as to NOT damage or drop the cover.

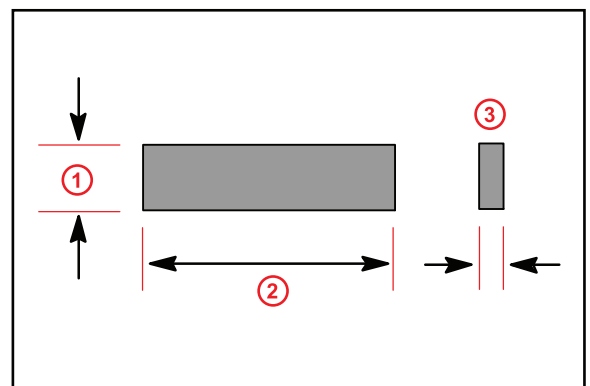
3. From the Wind Noise Kit, cut a section of felt to the following dimensions:

Length: 26 mm

Width: 10 mm

Thickness: 3 mm

Figure 4.



1	10 mm
2	26 mm
3	3 mm

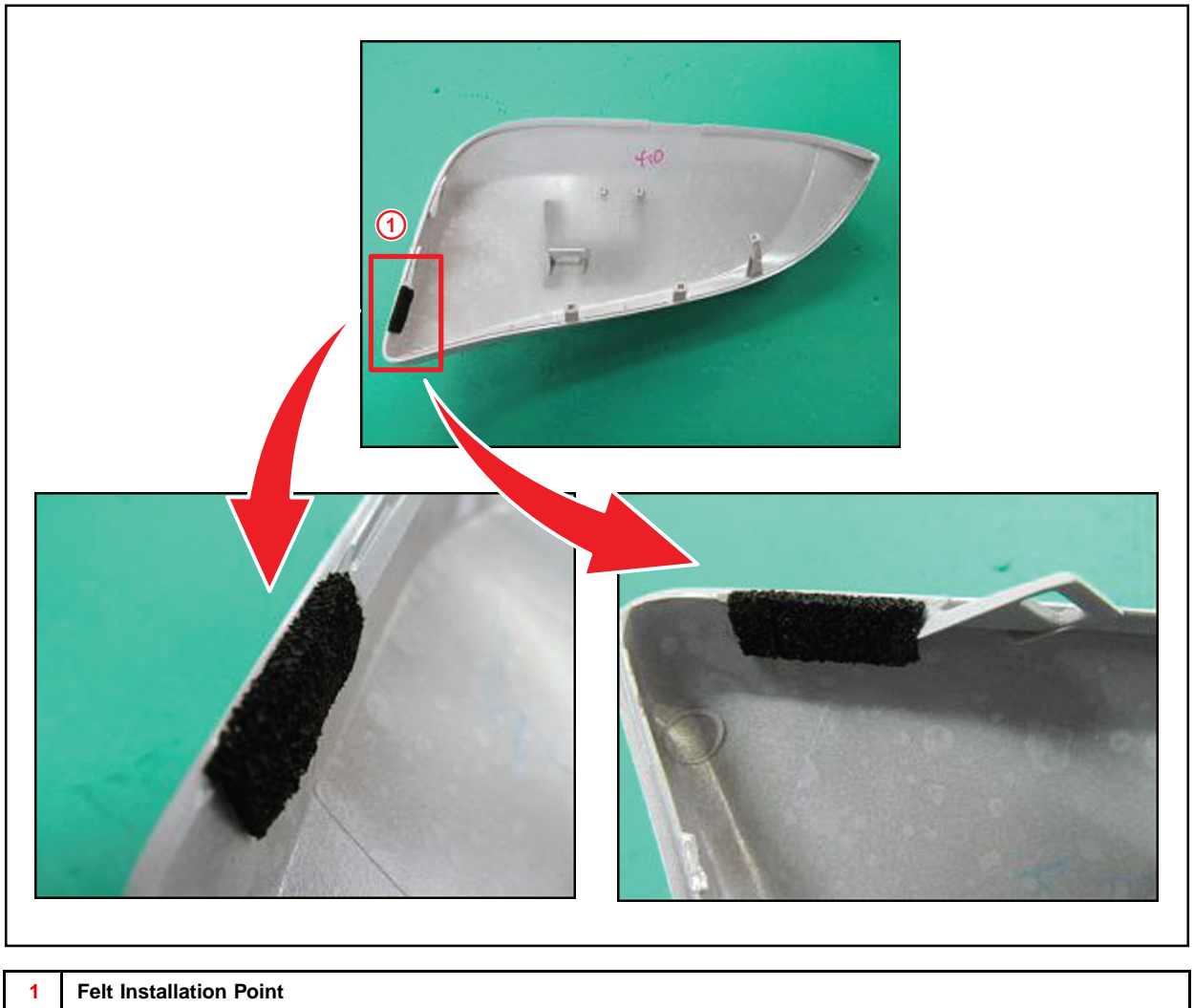
## Whistle Noise from Exterior Mirror

---

### Repair Procedure (Continued)

4. Apply the felt to the outer mirror cover as shown.

Figure 5. Felt Location on Outer Mirror Cover (Driver Side)



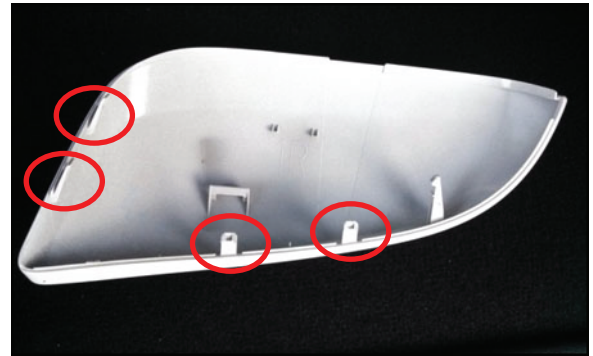
## Whistle Noise from Exterior Mirror

### Repair Procedure (Continued)

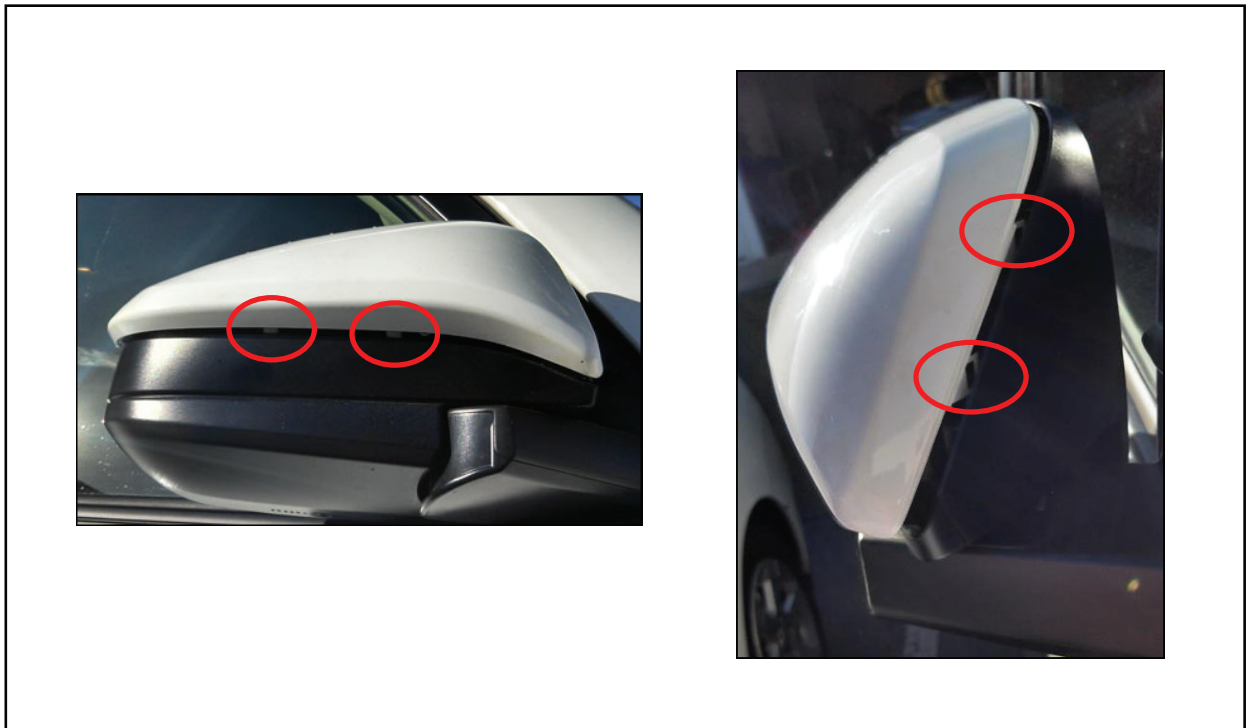
5. Reassemble the mirror by carefully aligning the clips at the circled locations and pressing until engagement.

**HINT**  
 Make sure the felt is not visible with the mirror installed.

**Figure 6. Clip Locations on Outer Mirror Cover (Driver Side)**



**Figure 7. Installed Clip Locations on Outer Mirror Cover (Passenger Side)**



6. Test drive the vehicle to confirm the whistle noise has been corrected.