

Date	Expiration	Release	Page
01.2014	01.2015	0	1(4)

DRIVE AXLE CRADLE TRIPOD MEMBER INSPECTION AND REPLACEMENT

Prevost vehicles

DESCRIPTION


On the vehicles affected by this bulletin, replace the rear tripod member.

MODEL YEAR(S) AND VEHICLES INVOLVED

<i>NOTICE TO SERVICE CENTERS</i>	
<i>Verify vehicle eligibility by checking warranty bulletin status with SAP or via ONLINE WARRANTY SYSTEM available on Service / Warranty tab of Prevost website.</i>	
Model	VIN
X3-45 coaches Model Year : 2013	Single unit : 2PCG33492DC735433
XLII-45 Entertainer Model Year : 2013	Single unit : 2PCYS3497DC735404
<p>This bulletin does not necessarily apply to all the above-mentioned vehicles, some vehicles may have been modified before delivery. The owners of the vehicles affected by this bulletin will be advised by a letter indicating the Vehicle Identification Number (VIN) of each vehicle concerned.</p>	

MATERIAL NEEDED

Order the following parts:

Part No.	Description	Qty
121995	 TRIPOD MEMBER, REAR	1
5001662	NYLON LOCK NUT M16	6

Other parts that may be required:

Part No.	Description	Qty
5001372	HEX CAP SCREW M16X50 G10.9 (LOWER BOLTS)	3
5001590	HEX CAP SCREW M16X40 G10.9 (UPPER BOLTS)	3
5001150	FLAT WASHER N500 30X17X3	6

NOTE

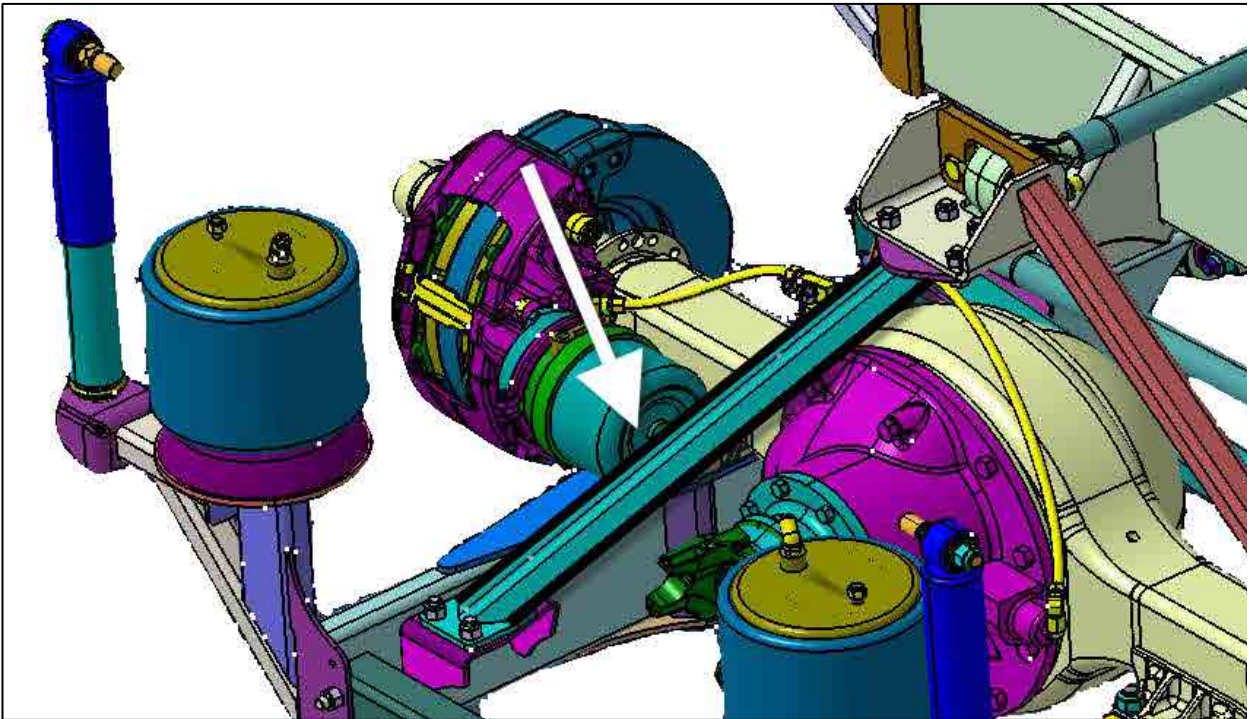
Material can be obtained through regular channels.

PROCEDURE



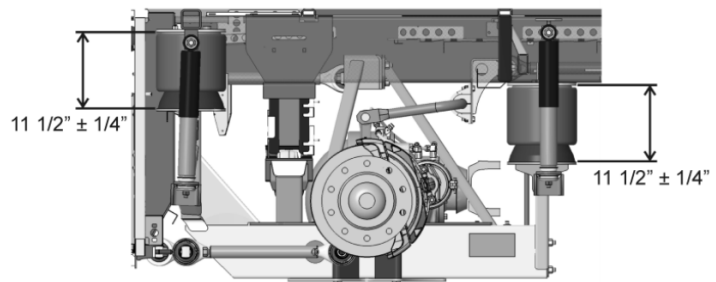
DANGER

Park vehicle safely, apply parking brake, stop engine. In the rear electrical compartment, set the battery cut-off switch to the OFF position prior to working on the vehicle.



1. Lift the tag axle. On Entertainers and Motorhomes with "level low" system, leave the battery power and ignition key to "ON" for the rest of the procedure else the vehicle will not level itself automatically.
2. Lift the vehicle by the tag axle wheels or the usual vehicle frame lifting points.
3. With rear suspension at nominal ride height (11 1/2"), place supports (jack stands) under the drive axle cradle to maintain the ride height. Deflate the air springs.

Note: This is to position the cradle assembly at a "dead" point where tension is minimized in the radius rods and structure.



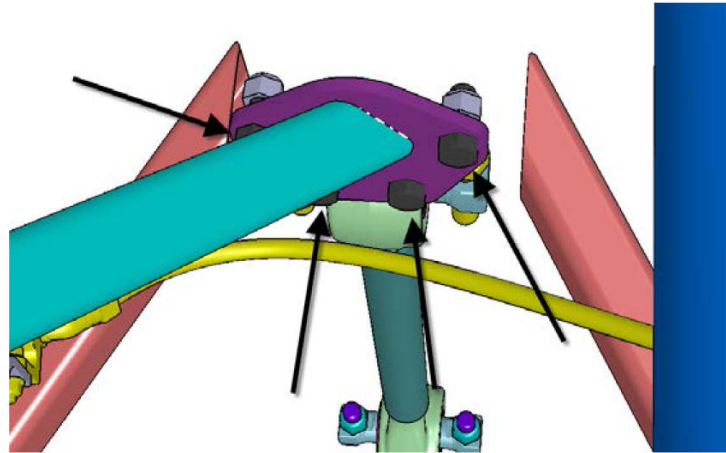
Date	Expiration	Release	Page
01.2014	01.2015	0	3(4)

4. To replace the rear tripod member, unscrew the top hardware (4).
5. Discard the nylon locking nuts.

Inspect screws to make sure they do not present any excessive corrosion or damage. Keep screws and washers (if used) for re-use.

Replace screws as required with new #5001590 M16x40 G10.9 hex cap screw.

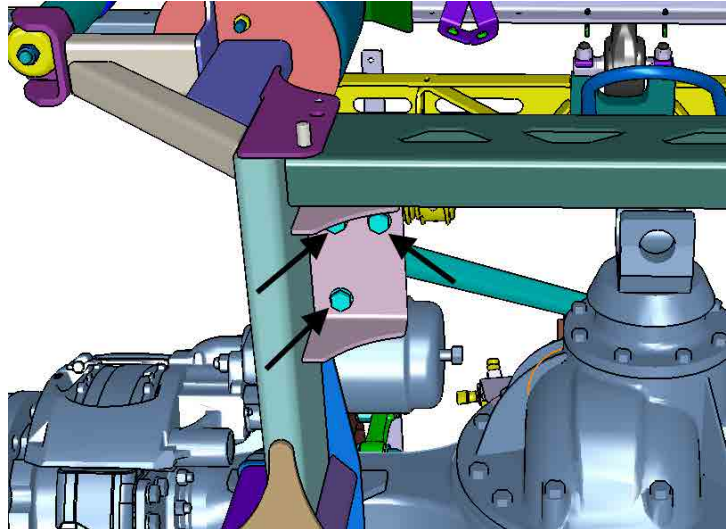
Note: Member bolt pattern may differ from supplied images.



6. Unscrew the bottom hardware (3).
7. Discard the nylon locking nuts

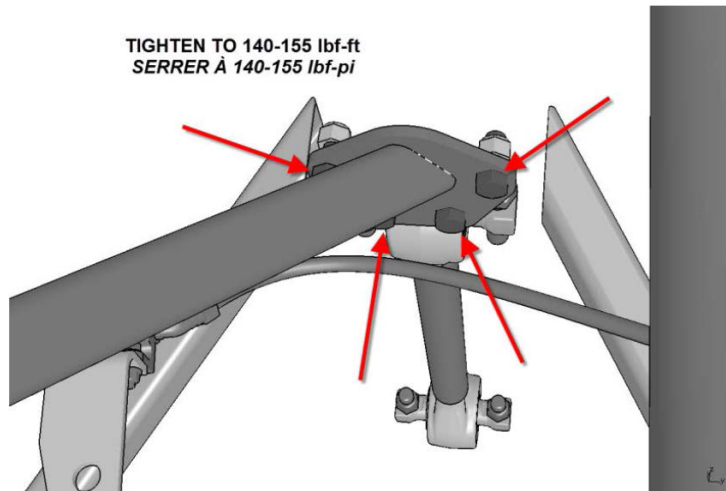
Inspect screws to make sure they do not present any excessive corrosion or damage. Keep screws and washers for re-use.

Replace screws as required with new #5001372 M16x50 G10.9 hex cap screw.

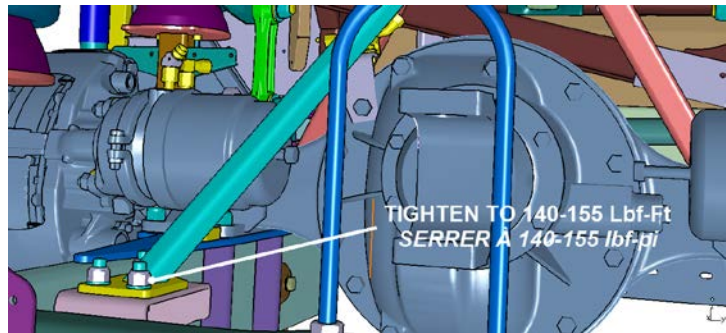


8. Tighten the top bolts to
140-155 lbf-ft (clean & dry)

TIGHTEN TO 140-155 lbf-ft
SERRER À 140-155 lbf-pi



9. Tighten the bottom bolts to 140-155 lbf-ft (clean & dry)



10. Restore air to the air springs; remove the jack stands and lower vehicle.
11. Ensure proper operation of the vehicle.

PARTS / WASTE DISPOSAL

Discard waste according to applicable environmental regulations (Municipal/State[Prov.]/ Federal)

ESTIMATED TIME

The time required to perform this special bulletin is approximately one hour and a half (1 ½ h).

OTHER

VBC Bulletin	N/A
Fail Code	11.03
Defect Code	09
System Condition	B
Causal Part	121995

Prevast engages in a continuous program of testing and evaluating to provide the best possible product. Prevast, however, is not committed to, or liable for updating existing products.