



---

**MIN – 14110**

25 April 2014

---

**Subject:** Front Crossmember Replacement

**Models Involved:**

ProStar® (see VIN list)

**Defect Description:**

On certain ProStar® models, the front crossmember thickness is incorrect. This procedure provides the necessary steps to replace the front crossmember with the correct front crossmember.

**VIN List**

FN118235

FN118249

FN119006

FN510970

FN516387

FN526337

**Tools Required:**

No special tools required.

**Parts Required:**

**NOTE:** Part was shipped to dealers directly.

<b>Part Number</b>	<b>Description</b>	<b>Quantity</b>
3882617C3	Crossmember, Engine Mounting Assembly	1

**Table 1** Parts Information

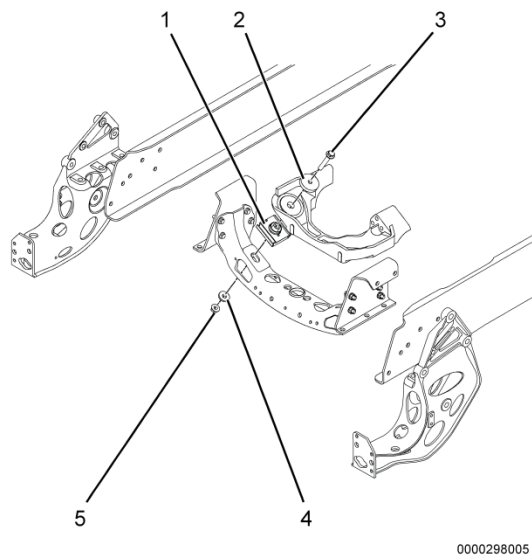
## Work Instructions

**WARNING!** Park vehicle on hard flat surface, turn the engine off, set the parking brake, and install wheel chocks to prevent the vehicle from moving in both directions. Failure to comply may result in property damage, personal injury, and / or death.

**WARNING!** If the vehicle must be raised, do not work under the vehicle supported only by jacks. Jacks can slip or fall over, potentially resulting in property damage, personal injury, and / or death.

**WARNING!** Always wear safe eye protection when performing vehicle maintenance. Failure to comply may result in personal injury and / or death.

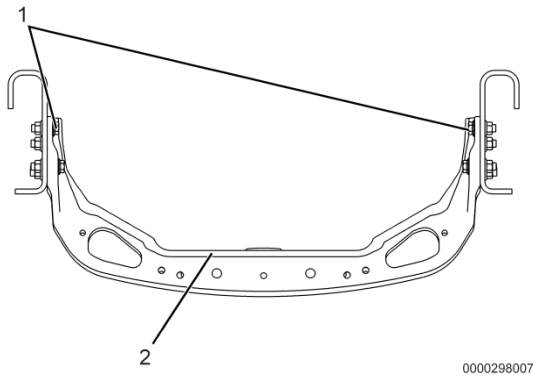
1. Bring vehicle into shop and park on flat surface.
2. Shift transmission to Park or Neutral, set parking brake, and install wheel chocks.
3. Unlatch and open hood.
4. Attach chain and hoist to engine.



0000298005

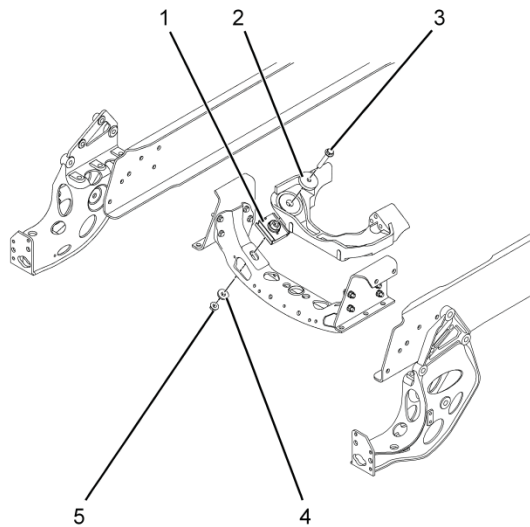
**Figure 1. Engine Mount Removal.**

1. Engine mount (2) (one shown)
  2. Large washer (2) (one shown)
  3. M16 bolt (2) (one shown)
  4. Washer (2) (one shown)
  5. Nut (2) (one shown)
5. Remove two nuts (Figure 1. Item 5) from M16 bolts (Figure 1, Item 3).
6. Raise engine and remove two washers (Figure 1, Item 4), large washers (Figure 1, Item 2), M16 bolts (Figure 1, Item 3) and engine mounts (Figure 1, Item 1) from vehicle.



**Figure 2. Front Crossmember.**

1. M12 bolt and nut (8) (6 not shown)
  2. Front crossmember
- 
7. Remove eight nuts, M12 bolts (Figure 2, Item 1), and front crossmember (Figure 2, Item 2) from vehicle. Discard front crossmember.
  8. Install new front crossmember (Figure 2, Item 2) on vehicle with eight M12 bolts and nuts (Figure 2, Item 1).
  9. Using torque wrench, tighten eight M12 bolts (Figure 2, Item 1) to 96 lb-ft (130.1 Nm).



0000298005

### Figure 3. Engine Mount Installation.

1. Engine mount (2) (one shown)
  2. Large washer (2) (one shown)
  3. M16 bolt (2) (one shown)
  4. Washer (2) (one shown)
  5. Nut (2) (one shown)
10. Install two engine mounts (Figure 3, Item 1) on vehicle with large washers (Figure 3, Item 2), M16 bolts (Figure 3, Item 3), washers (Figure 3, Item 4), and nuts (Figure 3, Item 5).
  11. Lower engine.
  12. Using torque wrench, tighten two M16 bolts (Figure 3, Item 3) to 145 lb-ft (196.9 N•m).
  13. Remove chain and hoist.
  14. Close and latch hood.
  15. Remove wheel chocks.

## LABOR INFORMATION

Operation number must appear on all claims.

**Table 2** Labor Information

Operation Number	Description	Time
A40-14110-1	Replace Front Crossmember	4.0 hrs

## WARRANTY CLAIMS

Warranty claim expense is to be charged to Warranty. Claims are to be submitted in the normal manner, making reference to Misbuild Investigation Notice 14110.

It is important that the coding be completed properly to assist in processing the warranty claim. Complete instructions will be found in the Warranty Policy Manual, Section 7.1.8.

As with all claim submissions, items acquired locally must be submitted in the "Other Charges" tab. The cost of any bulk items (such as a bag of cable tie straps, roll of wire, barrel of oil, or tube of silicone) should be prorated for the cost of the individual pieces / amount used during each repair.

To make sure this important improvement is made in a timely manner, all claims for 14110 activity must be submitted by 25 April 2015 or within the normal warranty period for the vehicle, if after 25 April 2015.

	GROUP	NOUN	C	WARR.	TP	PAD
GROUP — Enter number						
NOUN — Leave blank						
C (CAUSE) — Enter either 1, 2, 3. (See below)						
1. Inspected (No repair required).						
2. Inspected and repaired.						
3. Defective part from parts stock.						
WARRANTY — (Warranty Code) Enter 40.						
TYPE PART — Enter P for type part causing failure.						
PAD — Enter 100						

0000047910