



| | | | |
|--------------------------|--|-----------------------|-----------------|
| Countries: | CANADA, UNITED STATES, PUERTO RICO | Document ID: | IK1200398 |
| Availability: | ISIS, Bus ISIS, FleetISIS | Revision: | 2 |
| Major System: | ENGINES | Created: | 4/11/2008 |
| Current Language: | English | Last Modified: | 2/5/2014 |
| Other Languages: | Français , Español , | Author: | Randy Geweniger |
| Viewed: | 3963 | | |

[Less Info](#)

Hide Details

Coding Information

| | | | | | | | |
|----------------------|-------------------------------|--|-----------------------------|------------------|-----------------------------|---------------------------|--------------------------------|
| Copy Link | Copy Relative Link | Bookmark View My Bookmarks | Add to Favorites | Print | Provide Feedback | Helpful 639 | Not Helpful 1270 |
|----------------------|-------------------------------|--|-----------------------------|------------------|-----------------------------|---------------------------|--------------------------------|

Title: Engine Borg Warner Turbocharger Flange Kit

Applies To: 2004- 2006 DT 466 and 570 Engines, Borg Warner Turbochargers

DESCRIPTION

This article applies to the repair of Borg Warner turbochargers used on 2004 - 2006 DT 466 and 570 engines. Internal corrosion of the turbine housing flange can cause the variable turbine vanes to become inoperative. By replacing the turbine housing flange with the service flange kit 1878103C93 or 5010433R92, the repaired turbocharger can again be used. However, the very first production turbochargers are not able to use this service flange kit, due to the requirement for a machined clearance. This article describes the difference between the early flange that cannot use the flange kit and the subsequent production flange that can use the flange kit.

SYMPTOMS

- Customer complains of loss of power, low power, black smoke, poor performance, and/or yellow check engine light on.

POSSIBLE DIAGNOSTIC TROUBLE CODES

| DTC | MODULE | DESCRIPTION |
|------------|-------------------|---|
| 343 | Engine ECM | Excessive exhaust back pressure. |
| 345 | Engine ECM | Fault detected during VGT portion of the AMS test. |

TROUBLESHOOTING

1. The turbocharger flange that cannot use the flange kit has casting part number 67396270.

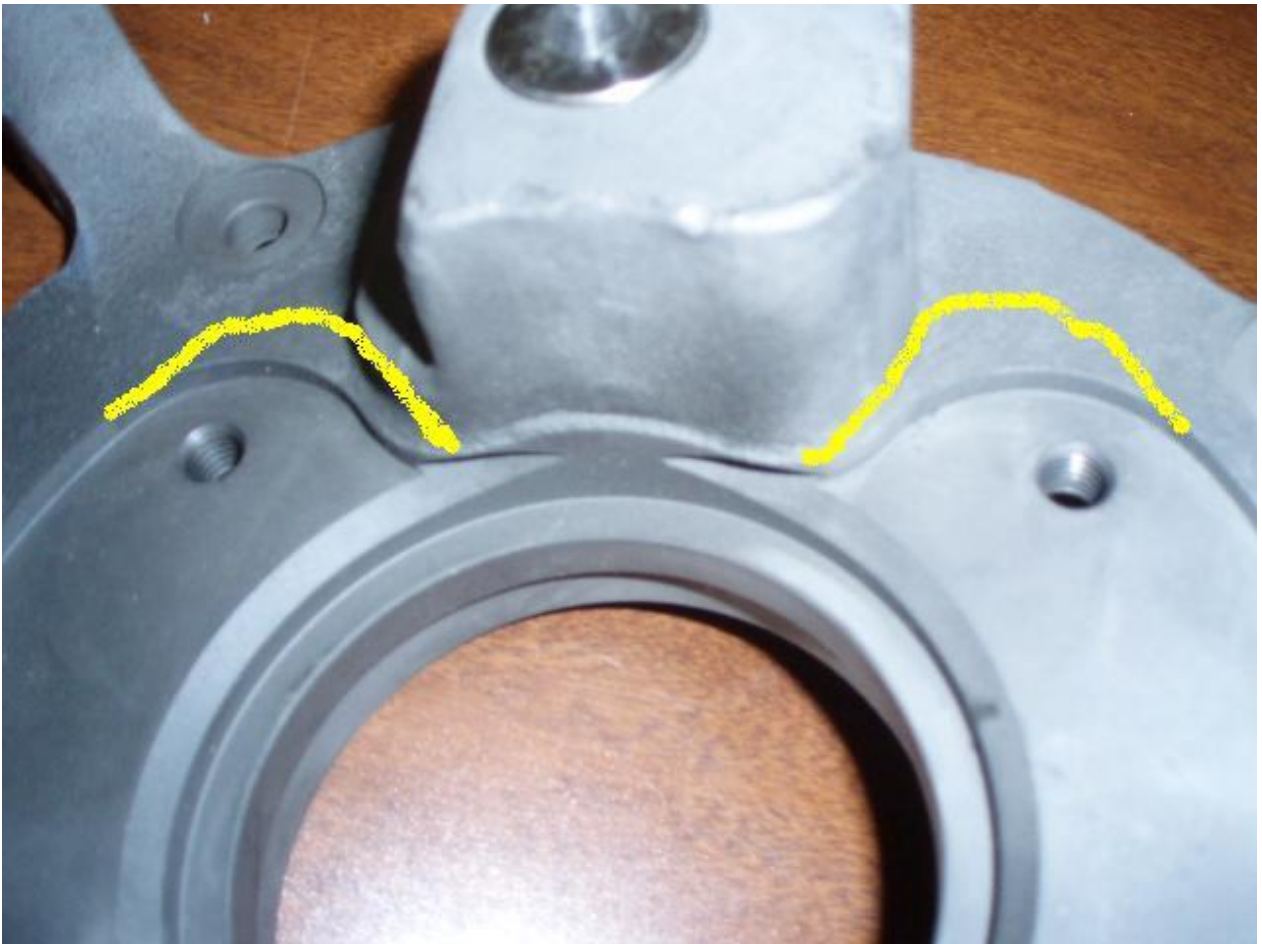
2. The attached photo shows where material must be removed in order to be able to use the flange kit.
3. The turbocharger flange that can use the flange kit has casting part number 6739821A.
4. The attached photo shows the flange that is used in the flange kit.



Flange with casting number that can use the service flange kit.



Flange with casting number that cannot use the service flange kit.



Flange above can use flange service kit. (Areas in yellow highlight difference between the two)



Old style flange above cannot use flange service kit. (Areas in yellow highlight difference between the two)

 Hide Details

Feedback Information

Viewed: 3962
Helpful: 639
Not Helpful: 1270

No Feedback Found