

TO: Service Locations

FROM: Service Operations

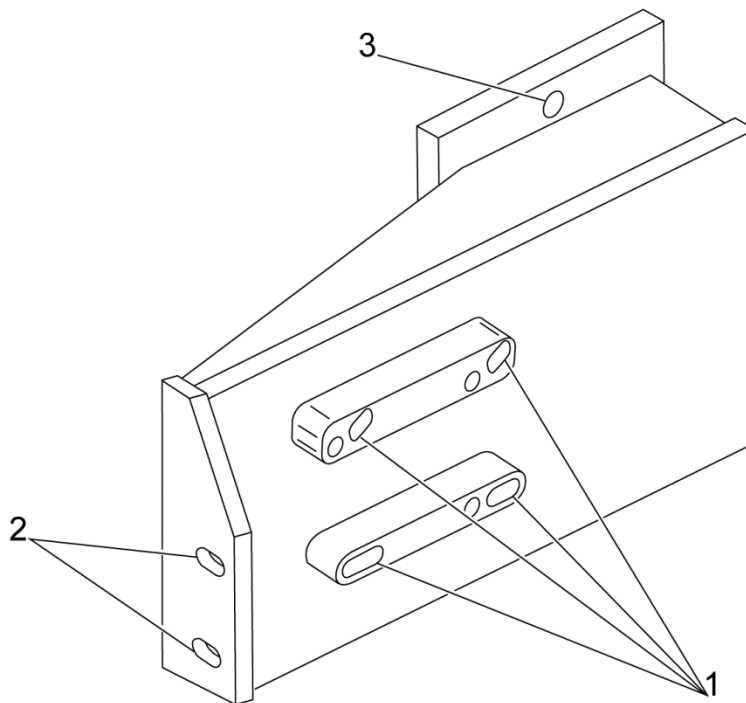
SUBJECT: **DD Platform Engine Stand Adapter W060589023100**

### GENERAL INFORMATION

The Detroit<sup>™</sup> special tool group has developed an engine stand adapter used to hold the engine during out-of-chassis repairs. The engine adapter can be mounted on the OTC/(Bosch) J-29109 or 1750 engine stand. The adapter is compatible with all HDEP engine sizes. The DD Platform Engine Stand Adapter W060589023100 is non-essential and must be ordered through Paragon.

### TOOL USAGE INSTRUCTIONS

Use an appropriate lifting device to mount the adapter to the engine stand. Follow the engine stand instructions for proper mounting torque specifications.



1. Mounting holes for the side of the engine.

2. Mounting holes for the front of the engine.
3. Mounting holes for the engine stand.

In order to mount the engine to the adapter, the following components must be removed:

- Front engine mount
  - Belt tensioner
  - Vibration damper
  - Wastegate solenoid (if applicable)
  - Heat shields on turbo and exhaust manifolds
  - Turbocharger
  - Crankcase breather assembly
1. Using an appropriate lifting device, position the engine next to the adapter and hand tighten six mounting bolts through the engine stand adapter to the cylinder crankcase.
  2. Torque the four bolts on the side of the cylinder crankcase to 140 N·m (103 lb·ft).
  3. Torque the two bolts on the front of the cylinder crankcase to 125 N·m (92 lb·ft).

#### **ADDITIONAL INFORMATION**

##### **Ordering Information:**

**W060589023100 can be ordered through Paragon using a DDE supplier prefix.**

**☐ DDEW060589023100 – DD Platform Engine Stand Adapter**

#### **CONTACT INFORMATION**

Please contact the Detroit™ Customer Support Center at 800-445-1980 or email [csc@daimler.com](mailto:csc@daimler.com) if you have any questions.