

Technical Bulletin

Model(s)	Year	Eng. Code	Trans. Code	VIN Range From	VIN Range To
Jetta	2005 – 2010	All	All	All	All
Sportwagen	2008 – 2009	All	All	All	All
Golf	2006 – 2014	All	All	All	All

Condition

51 14 02 November 25, 2014 2038990

Rocker Panel - Front Fender – Corrosion

- Corrosion between the rocker panel (side member) and the fender (Figure 1, red outline).



Figure 1 - corrosion in the area of the rocker panel/front fender

Technical Bulletin

- Corrosion on the contact surface of the fender (Figure 2, in red outline).



Figure 2 - fender removed (corrosion on the contact surface of the fender)

- Corrosion on the contact surface of the rocker panel (side member - Figure 3, in red outline).



Figure 3 - fender removed (corrosion on the contact surface of the rocker panel [side member])

 **Note:**

To determine if this procedure is covered under Warranty, always refer to the *Warranty Policies and Procedures Manual*.

Documentation required per *Warranty Policies and Procedures Manual*.

For vehicles outside of the Limited Warranty Against Corrosion Perforation this Technical Bulletin is for information only.

Technical Bulletin

Technical Background

Corrosion on contact surfaces of the front fender to rocker panel (side member).

Production Solution

Not applicable.

Service

Repair front fender and rocker panel (side member)

Repair front fender:

- Remove the front door according to the repair manual. See Repair Group 57 in Elsa.
- Remove the front fender according to the repair manual. See Repair Group 50 in Elsa.
- Check the contact surface of the fender for corrosion (Figure 4, in red outline).



Figure 4 (corroded contact surface of fender)

- Remove the corrosion in the contact area of the fender with the pneumatic brush grinder.
- Apply a VOC compliant epoxy primer as an anti-corrosion treatment and primer (locally sourced).
- Restore the paint structure according to the paint repair manual.

Technical Bulletin

Repair outer sill panel (side member):

- Check the rocker panel (side member) in contact surface of the fender for corrosion (Figure 5, in red outline).



Figure 5 (corroded contact outer rocker panel [side member])

- Remove the corrosion on the rocker panel (side member) with the pneumatic brush grinder.
- Apply a VOC compliant epoxy primer as an anti-corrosion treatment and primer (locally sourced).
- Seal and smooth the rocker (side member) in the area of the metal edge (Figure 6, in red) with polyurethane sealer (part number: AKD 476 KD5 05).



Figure 6 – rocker (side member) during repair

Technical Bulletin

- Restore the paint structure of the rocker panel (side member) according to the paint repair manual.
- Install the front door according to the repair manual. See Repair Group 57 in Elsa.

Before installing the fender, attach two zinc layers (part number AKL 381 035 50) in the contact area between fender and rocker panel (side member - illustration 7, arrows) and bond them on the rocker panel - see also Figure 8 (number 1).

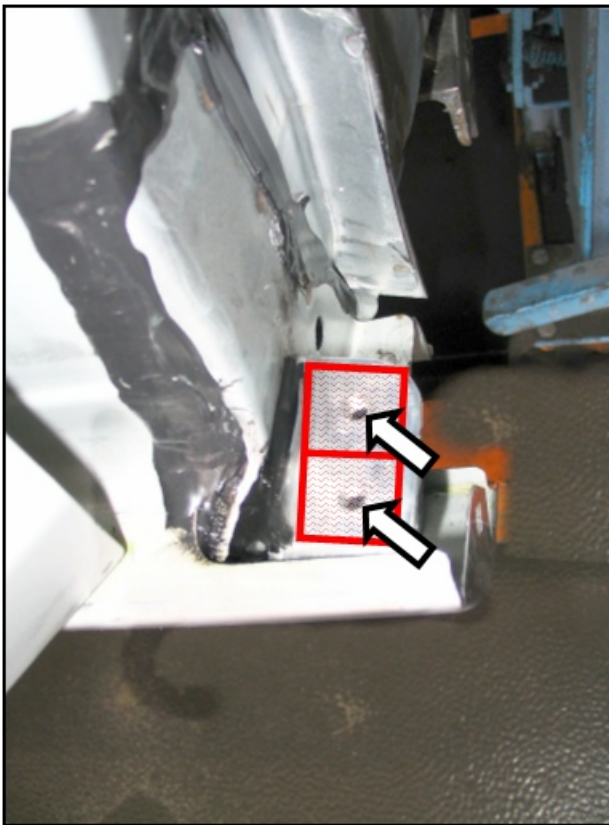


Figure 7 - during repair

Technical Bulletin

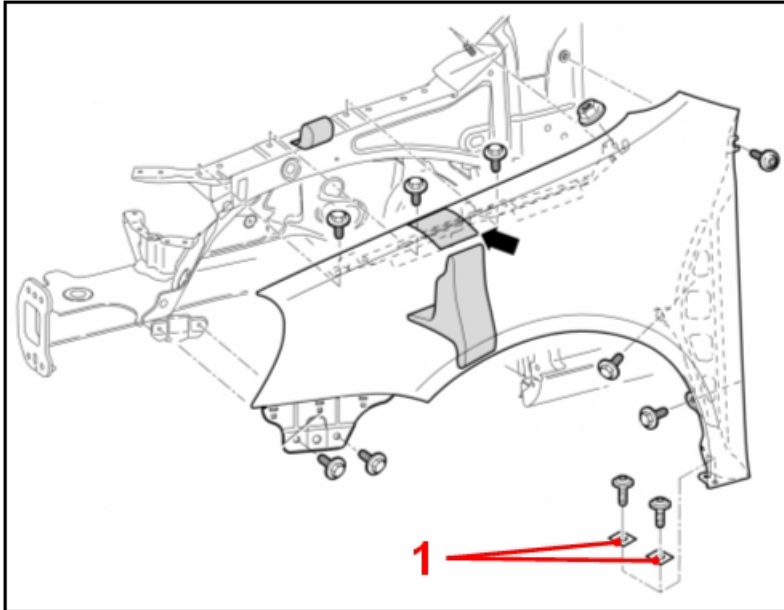


Figure 8 - zinc layers (No. 1)

- Install the front fender according to the repair manual. See Repair Group 50 in Elsa.

Technical Bulletin

Warranty

! **Note:**

- Dealers may complete the repair as described without prior authorization (through a WISE Warranty Repair Acceptance request).
- Documentation required: Clear pictures, completed estimate and body shop invoice must be saved and kept on file at the Dealership for audit purposes.
- This bulletin applies for 1 front fender and rocker panel repair. If both sides exhibit the corrosion they should be evaluated individually and claimed on separates lines. Total Body Painting Prep Time for both front fenders and rocker panels should be claimed on the first line only.
- Labor time units (TU), Material units (MU), and Material unit rate are correct at the time of publication. The time units and/or material units may differ if the repair catalogue is updated. The information in the repair catalogue applies, except for the open time items (labor operations ending in 99) which are calculated at actual time multiplied by the body shop labor rate. The material allowance (Paint material price per unit) is subject to change. Refer to **WISE > Resource Center > Forms > Paint/Corrosion for the most current forms.**
- This section is applicable for vehicles within the terms of Volkswagen's Limited Warranty Against Corrosion Perforation. For vehicles outside the terms of the Limited Warranty Against Corrosion Perforation this section is for information only.
- This bulletin may be provided to outside shops to ensure the proper repair is completed.

! **Note:**

Claim Processing Options

Option 1: Utilize the attached form examples and pre-populated forms on WISE to assist with calculating the reimbursement amounts. **This will expedite the claim review process and reduce the time to pay the claim.**

Note that miscalculations are subject to claim adjustment.

For the complete set of pre-populated Paint/Corrosion Claim Form templates associated with this Technical Bulletin, refer to WISE > Resource Center > Forms > Paint/Corrosion.

Option 2: Email repair estimates to paintcamp@vw.com. The Paint and Corrosion Team will calculate the warranty allowance and complete the required form(s) on behalf of the dealer.

To determine if this procedure is covered under Warranty, always refer to the <i>Warranty Policies and Procedures Manual</i> ¹⁾					
Model(s)	Year(s)	Eng. Code(s)	Trans. Code(s)	VIN Range From	VIN Range To
Jetta	2004 – 2010	All	All	All	All
Sportwagen	2008 – 2009	All	All	All	All
Golf	2009 – 2014	All	All	All	All



Technical Bulletin

SAGA Coding			
Claim Type:	160 ¹⁾		
Service Number:	Damage Code	HST	Damage Location (Depends on Service No.)
5145	0003	--	130 or 131
Parts Manufacturer	Jetta (1K2), Sportwagen (1K5)	130 or 131 ²⁾	
	A5 Golf (1K1), A6 Golf (5K1)	130 or 131 ²⁾	
Repair			
Please use the following part number in "Outside Materials" ⁴⁾			
LACKMATF: Paint and Materials		MU @ \$12 per unit	
Epoxy Primer (Locally Sourced)		Claim Dollar Amount (MAX: \$40)	
Please use the following Labor Operation in "Outside Labor" ⁴⁾			
Select the appropriate Labor Operation below: - L0010000: External Painting-straight color - L0020000: External Painting-metallic/2-layer - L0030000: External Painting-pearl color		Claim Dollar Amount	
Use this for all body repair in this bulletin: - A0041000: Body Shop repair no paint		Claim Dollar Amount	
Replace			
Please use the following part number in "Outside Materials" ⁴⁾			
LACKMATF: Paint and Materials		MU @ \$12 per unit	
Please use the following Labor Operation in "Outside Labor" ⁴⁾			
Select the appropriate Labor Operation below: - L0010000: External Painting-straight color - L0020000: External Painting-metallic/2-layer - L0030000: External Painting-pearl color		Claim Dollar Amount	



Technical Bulletin

Use this for all body repair in this bulletin: - A0041000: Body Shop repair no paint		Claim Dollar Amount
Causal Part:		L00#0000
Diagnostic Time ⁴⁾		
GFF Time expenditure	01500000 = 00 TU max.	NO
Road Test	01210002 = 00 TU 01210004 = 00 TU	NO
Technical Diagnosis	01320000 = 00 TU	NO
Claim Comment: Input "As per Technical Bulletin 2038990" in comment section of Warranty Claim.		
<p>¹⁾ For Vehicles outside the Limited Warranty Against Corrosion Perforation this bulletin is information only</p> <p>²⁾ Corrosion claim vendor code will be the damage location.</p> <p>³⁾ Labor Time Units (TUs) are subject to change with ELSA updates.</p> <p>⁴⁾ Documentation required per <i>Warranty Policies and Procedures Manual</i>.</p> <p>⁵⁾ See attachment "srt_reference_table.pdf" for labor time reference.</p>		

Required Parts and Tools

Part number	Designation	Quantity to be accounted
AKD 476 KD5 05	Polyurethane adhesive	Maximum 0.25 per side needed
AKL 381 035 50	Zinc layers	Maximum 2 per side needed

No Special Tools Required.

Additional Information

All part and service references provided in this Technical Bulletin are subject to change and/or removal. Always check with your Parts Dept. and Repair Manuals for the latest information.

Paint/Corrosion Claim Form



Das Auto.

Dealer No.
Repair Order No.

400000
910000

Example - Repair

If repeat repair, provide explanation in box below:

A6 Golf 4-Door

VIN (17-Digits)	WVWBM7AJ0BW000000		
Color No. (4-digit ElsaPro Paint No.)	LA5Q		
Dealer Labor Rate	100.00		
Paint material price per unit	12.00		
Dealer-owned paint shop?	<input checked="" type="radio"/>	Yes	<input checked="" type="radio"/> No
Original paint material?	<input checked="" type="radio"/>	Yes	<input checked="" type="radio"/> No

Service No.	Damage Code	Dmg Loc	Part manufacturer (Vendor Code)	Description of Repair	Paint Labor Operation(s)	Time Units	Mat'l Units
5145	0003	130	130	Paint one rocker panel	51457903	110	8
				Paint one fender	50557953	70	3
				Verify ALL Labor Operation Time Units and Material Units			
				If both fenders are affected, the prep time should be entered on the first line of the SAGA claim and only once on the first Paint/Corrosion Claim Form			

Note: Authorization and claim reimbursement are contingent on the usage of original parts for the repair

Body Painting Prep Time	51017133	190
-------------------------	----------	-----

The vehicle history must be checked for any previous damage. Digital photographs must be included with the repair order per VWoA instructions. If there is a sublet invoice for painting, the invoice amount must be split between outside (sublet) labor and outside (sublet) material.

Paint Subtotal	370	11
----------------	-----	----

Part Number	Part Description	Part Qty	Part Price per Unit	Total Part Price	Description of Repair	Repair/Replace Labor Operation(s)	Time Units
	Epoxy Primer	1	\$ 40.00		Remove and install front door	57511900	40
					Remove and install front fender	50551950	90
					Remove and install front bumper cover	63291950	40
					Remove and install grille	66051900	20
					Remove and install sill panel	66311900	30
					Remove corrosion on the fender	50554999	30
					Remove and seal off corrosion on the rocker panel	51454999	60
					Wax body in the outer side member	51017500	30
				Outside Material Part Amount Subtotal \$ 40.00	Body Labor Subtotal		340
				LACKMATF Total Paint Material Amount \$ 132.00	Total TU/MU		710 11
				Total Parts Amount \$ 172.00			

Example Part Qty and Part Price per Unit only
All other parts should be claimed separately in the SAGA claim

Full pre-populated forms can be found in the following location:
WISE > Resource Center > Forms > Paint/Corrosion > TB# - Form specific to the vehicle and the repair.

VW Representative
Authorization No.

TB 2038990

Authorization Date

Authorization valid until:

L00#0000	\$ 370.00
A0041000	\$ 340.00
Parts and Materials:	\$ 172.00
Total:	\$ 882.00

VW Representative Name (printed)

VW Representative Signature

Paint/Corrosion Claim Form



Das Auto.

Dealer No.
Repair Order No.

400000
910000

Example - Repair

If repeat repair, provide explanation in box below:

A5 Jetta

VIN (17-Digits)	3VWBA71K18M000000		
Color No. (4-digit ElsaPro Paint No.)	LR9A		
Dealer Labor Rate	100.00		
Paint material price per unit	12.00		
Dealer-owned paint shop?	<input checked="" type="radio"/>	Yes	<input checked="" type="radio"/> No
Original paint material?	<input checked="" type="radio"/>	Yes	<input checked="" type="radio"/> No

Service No.	Damage Code	Dmg Loc	Part manufacturer (Vendor Code)	Description of Repair	Paint Labor Operation(s)	Time Units	Mat'l Units
5145	0003	130	130	Paint one rocker panel	51457913	130	9
				Paint one fender	50557953	70	4
				Verify ALL Labor Operation Time Units and Material Units			
				If both fenders are affected, the prep time should be entered on the first line of the SAGA claim and only once on the first Paint/Corrosion Claim Form			

Note: Authorization and claim reimbursement are contingent on the usage of original parts for the repair

Body Painting Prep Time	51017133	190
-------------------------	----------	-----

The vehicle history must be checked for any previous damage. Digital photographs must be included with the repair order per VWoA instructions. If there is a sublet invoice for painting, the invoice amount must be split between outside (sublet) labor and outside (sublet) material.

Paint Subtotal	390	13
----------------	-----	----

Part Number	Part Description	Part Qty	Part Price per Unit	Total Part Price	Description of Repair	Repair/Replace Labor Operation(s)	Time Units
	Epoxy Primer	1	\$ 40.00		Remove and install front door	57511900	30
					Remove and install front fender	50551950	70
					Remove and install front bumper cover	63291900	70
					Remove and install sill trim	66291900	20
					Remove and install sill panel	66311900	70
					Remove corrosion on the fender	50554999	30
					Remove and seal off corrosion on the rocker panel	51454999	60
					Wax body in the outer side member	51017500	30
				Outside Material Part Amount Subtotal \$ 40.00	Body Labor Subtotal		380
				LACKMATF Total Paint Material Amount \$ 156.00	Total TU/MU		770 13
				Total Parts Amount \$ 196.00			

Example Part Qty and Part Price per Unit only
All other parts should be claimed separately in the SAGA claim

Full pre-populated forms can be found in the following location:
WISE > Resource Center > Forms > Paint/Corrosion > TB# - Form specific to the vehicle and the repair.

VW Representative
Authorization No.

TB 2038990

Authorization Date

Authorization valid until:

L00#0000	\$ 390.00
A0041000	\$ 380.00
Parts and Materials:	\$ 196.00
Total:	\$ 966.00

VW Representative Name (printed)

VW Representative Signature

SRT Reference Table for TPI# 2038990

Repair (A5 Golf – 4-Door) – Models(1K1)		
Body Labor		
Labor Operation : Remove and install front door	57 51 19 00 = 30 TU	Multiply claim time units x warranty labor rate. Enter in SAGA under Outside Labor Operation: A0041000
Labor Operation : Remove and install fender	50 55 19 50 = 70 TU	
Labor Operation : Remove and install front bumper cover (Select one of the listed SRTs)	63 29 19 00 = 70 TU Or 63 29 19 20 = 70 TU (For GTI Edition 30/GTI Pirelli)	
Labor Operation : Remove and install sill trim	66 29 19 00 = 20 TU	
Labor Operation : Remove and install sill panel (Only select one of the listed SRTs if the vehicle model is listed)	66 31 19 10 = 70 TU (For GTI) Or 66 31 19 20 = 70 TU (For GTI Edition 30/GTI Pirelli)	
Labor Operation : Remove corrosion on the fender	50 55 49 99 = 30 TU	
Labor Operation: Remove and seal off corrosion on the rocker panel	51 45 49 99 = 60 TU	
Labor Operation : Wax body in the outer side member	51 01 75 00 = 30 TU	
Refinish Labor		
Labor Operation: Prepare painting	51 01 71 33 = 190 TU	Multiply claim time units x warranty labor rate. Enter in SAGA under Outside Labor Operation: L00#0000* *Please see warranty table for proper labor operation
Labor Operation: Paint one rocker panel	51 45 79 13 = 110 TU	
Labor Operation: Paint one fender	50 55 79 53 = 70 TU	
Outside Materials		
Labor Operation: Paint one rocker panel	8 MU	Multiply claim material units x \$12.00. Enter in SAGA under Outside Materials: LACKMATF
Labor Operation: Paint one fender	4 MU	

Repair (A5 Golf – 2-Door) – Models(1K1)

Body Labor

Labor Operation : Remove and install front door	57 51 19 00 = 30 TU	Multiply claim time units x warranty labor rate. Enter in SAGA under Outside Labor Operation: A0041000
Labor Operation : Remove and install fender	50 55 19 50 = 70 TU	
Labor Operation : Remove and install front bumper cover (Select one of the listed SRTs)	63 29 19 00 = 70 TU Or 63 29 19 20 = 70 TU (For GTI Edition 30/GTI Pirelli)	
Labor Operation : Remove and install sill trim	66 29 19 00 = 20 TU	
Labor Operation : Remove and install sill panel (Only select one of the listed SRTs fi the vehicle model is listed)	66 31 19 10 = 70 TU (For GTI) Or 66 31 19 20 = 70 TU (For GTI Edition 30/GTI Pirelli)	
Labor Operation : Remove corrosion on the fender	50 55 49 99 = 30 TU	
Labor Operation: Remove and seal off corrosion on the rocker panel	51 45 49 99 = 60 TU	
Labor Operation : Wax body in the outer side member	51 01 75 00 = 30 TU	

Refinish Labor

Labor Operation: Prepare painting	51 01 71 33 = 190 TU	Multiply claim time units x warranty labor rate. Enter in SAGA under Outside Labor Operation: L00#0000* *Please see warranty table for proper labor operation
Labor Operation: Paint one rocker panel	51 45 79 03 = 90 TU	
Labor Operation: Paint one fender	50 55 79 53 = 70 TU	

Outside Materials

Labor Operation: Paint one rocker panel	6 MU	Multiply claim material units x \$12.00. Enter in SAGA under Outside Materials: LACKMATF
Labor Operation: Paint one fender	4 MU	

Repair (A5 Jetta) – Model (1K2)

Body Labor

Labor Operation : Remove and install front door	57 51 19 00 = 30 TU	Multiply claim time units x warranty labor rate. Enter in SAGA under Outside Labor Operation: A0041000
Labor Operation : Remove and install fender	50 55 19 50 = 70 TU	
Labor Operation : Remove and install front bumper cover (Select one of the listed SRTs)	63 29 19 00 = 70 TU Or 63 29 19 10 = 90 TU (For Jetta Cup Edition)	
Labor Operation : Remove and install sill trim	66 29 19 00 = 20 TU	
Labor Operation : Remove and install sill panel	66 31 19 00 = 70 TU	
Labor Operation : Remove corrosion on the fender	50 55 49 99 = 30 TU	
Labor Operation: Remove and seal off corrosion on the rocker panel	51 45 49 99 = 60 TU	
Labor Operation : Wax body in the outer side member	51 01 75 00 = 30 TU	

Refinish Labor

Labor Operation: Prepare painting	51 01 71 33 = 190 TU	Multiply claim time units x warranty labor rate. Enter in SAGA under Outside Labor Operation: L00#0000* *Please see warranty table for proper labor operation
Labor Operation: Paint one rocker panel	51 45 79 13 = 130 TU	
Labor Operation: Paint one fender	50 55 79 53 = 70 TU	

Outside Materials

Labor Operation: Paint one rocker panel	9 MU	Multiply claim material units x \$12.00. Enter in SAGA under Outside Materials: LACKMATF
Labor Operation: Paint one fender	4 MU	

Repair (A5 Jetta Sportwagen) – Model(1K5)

Body Labor

Labor Operation : Remove and install front door	57 51 19 00 = 30 TU	Multiply claim time units x warranty labor rate. Enter in SAGA under Outside Labor Operation: A0041000
Labor Operation : Remove and install fender	50 55 19 50 = 70 TU	
Labor Operation : Remove and install front bumper cover	63 29 19 00 = 70 TU	
Labor Operation : Remove and install sill trim	66 29 19 00 = 20 TU	
Labor Operation : Remove corrosion on the fender	50 55 49 99 = 30 TU	
Labor Operation: Remove and seal off corrosion on the rocker panel	51 45 49 99 = 60 TU	
Labor Operation : Wax body in the outer side member	51 01 75 00 = 30 TU	

Refinish Labor

Labor Operation: Prepare painting	51 01 71 33 = 190 TU	Multiply claim time units x warranty labor rate. Enter in SAGA under Outside Labor Operation: L00#0000* *Please see warranty table for proper labor operation
Labor Operation: Paint one rocker panel	51 45 79 13 = 130 TU	
Labor Operation: Paint one fender	50 55 79 53 = 70 TU	

Outside Materials

Labor Operation: Paint one rocker panel	9 MU	Multiply claim material units x \$12.00. Enter in SAGA under Outside Materials: LACKMATF
Labor Operation: Paint one fender	4 MU	

Repair (A6 Golf – 4-Door) – Model(5K1)

Body Labor

Labor Operation : Remove and install front door	57 51 19 00 = 40 TU	Multiply claim time units x warranty labor rate. Enter in SAGA under Outside Labor Operation: A0041000
Labor Operation : Remove and install front fender	50 55 19 50 = 90 TU	
Labor Operation : Remove and install front bumper cover	63 29 19 50 = 40 TU	
Labor Operation : Remove and install grille	66 05 19 00 = 20 TU	
Labor Operation : Remove and install sill panel	66 31 19 00 = 30 TU	
Labor Operation : Remove corrosion on the fender	50 55 49 99 = 30 TU	
Labor Operation: Remove and seal off corrosion on the rocker panel	51 45 49 99 = 60 TU	
Labor Operation : Wax body in the outer side member	51 01 75 00 = 30 TU	

Refinish Labor

Labor Operation: Prepare painting	51 01 71 33 = 190 TU	Multiply claim time units x warranty labor rate. Enter in SAGA under Outside Labor Operation: L00#0000*
Labor Operation: Paint one rocker panel	51 45 79 03 = 110 TU	
Labor Operation: Paint one fender	50 55 79 53 = 70 TU	

Outside Materials

Labor Operation: Paint one rocker panel	8 MU	Multiply claim material units x \$12.00. Enter in SAGA under Outside Materials: LACKMATF
Labor Operation: Paint one fender	3 MU	

Repair (A6 Golf – 2-Door) – Model(5K1)

Body Labor

Labor Operation : Remove and install front door	57 51 19 00 = 40 TU	Multiply claim time units x warranty labor rate. Enter in SAGA under Outside Labor Operation: A0041000
Labor Operation : Remove and install front fender	50 55 19 50 = 70 TU	
Labor Operation : Remove and install front bumper cover	63 29 19 50 = 70 TU	
Labor Operation : Remove and install grill	66 05 19 00 = 20 TU	
Labor Operation : Remove and install sill panel	66 31 19 00 = 30 TU	
Labor Operation : Remove corrosion on the fender	50 55 49 99 = 30 TU	
Labor Operation: Remove and seal off corrosion on the rocker panel	51 45 49 99 = 60 TU	
Labor Operation : Wax body in the outer side member	51 01 75 00 = 30 TU	

Refinish Labor

Labor Operation: Prepare painting	51 01 71 33 = 190 TU	Multiply claim time units x warranty labor rate. Enter in SAGA under Outside Labor Operation: L00#0000*
Labor Operation: Paint one rocker panel	51 45 79 13 = 70 TU	
Labor Operation: Paint one fender	50 55 79 53 = 70 TU	

Outside Materials

Labor Operation: Paint one rocker panel	5 MU	Multiply claim material units x \$12.00. Enter in SAGA under Outside Materials: LACKMATF
Labor Operation: Paint one fender	3 MU	