

Technical Bulletin

Model	Year	Eng. Code	Trans. Code	VIN Range From	VIN Range To
Jetta Sedan	2014	All	All	AJ_EM000001	AJ_EM224725
Jetta Sedan	2014	All	All	AJ_EM300001	AJ_EM378162

Condition

55 14 02 January 30, 2014 2036334 Supersedes V551401 dated January 29, 2014 to adjust labor time.

Fuel Door Sticks or is Difficult to Open

Technical Background

Fuel door binding or sticking due to excess material inside of the fuel door housing.

Production Solution

Improved production procedures at the part supplier.

Service



- Open the fuel door.

Figure 1

Technical Bulletin



Figure 2

- If the fuel door will not open, insert a plastic card between the body and the door to release it.



Figure 3

- Note the area with excess material (burrs) that need to be modified.

Technical Bulletin



Figure 4

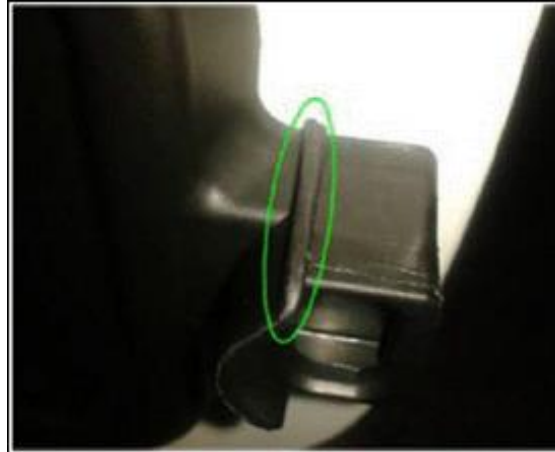


Figure 5

- Use a file to remove the excess material (figure 4)
- When the rework is completed, close the fuel door and verify normal operation with the vehicle locked and unlock.



Technical Bulletin

Warranty

To determine if this procedure is covered under Warranty, always refer to the Warranty Policies and Procedures Manual ¹⁾					
Model(s)	Year(s)	Eng. Code(s)	Trans. Code(s)	VIN Range From	VIN Range To
Jetta Sedan	2014	All	All	AJ_EM000001	AJ_EM224725
Jetta Sedan	2014	All	All	AJ_EM300001	AJ_EM378162
SAGA Coding					
Claim Type:	Use applicable Claim Type ¹⁾				
Service Number:	Damage Code	HST		Damage Location (Depends on Service No.)	
5537	0017	--		Use applicable when indicated in ElsaWeb (L/R)	
	Jetta				3ME ²⁾
Labor Operation ³⁾ : Modify Fuel Door			55374999 = 10 TU		
Diagnostic Time ⁴⁾					
GFF Time expenditure	01500000 = 00 TU max.				NO
Road Test	01210002 = 00 TU 01210004 = 00 TU				NO
Technical Diagnosis	01320000 = 00 TU max.				NO
Claim Comment: Input "As per Technical Bulletin 2036334" in comment section of Warranty Claim.					
¹⁾ Vehicle may be outside any Warranty in which case this Technical Bulletin is informational only ²⁾ Code per warranty vendor code policy. ³⁾ Labor Time Units (TUs) are subject to change with ELSA updates. ⁴⁾ Documentation required per Warranty Policy Procedures Manual.					



Technical Bulletin

Required Parts and Tools

No Special Parts required.

No Special Tools required.

Additional Information

All part and service references provided in this Technical Bulletin are subject to change and/or removal. Always check with your Parts Dept. and Repair Manuals for the latest information.