

Contents

- Item 1. Upper Drive Belt Guard - Thunderbird All Models
- Item 2. Catalytic Converter Mounting Bracket Fixings - Thunderbird Commander and Thunderbird LT
- Item 3. Torque Figures Updates - Thunderbird All Models
- Item 4. Horn Fixing - Rocket III Touring ABS
- Item 5. Centre Stand Fixings - Trophy and Trophy SE
- Item 6. Front Brake Hose Clip - Rocket III Roadster ABS
- Item 7. Clutch Cover Kits - All Speed Triple models from VIN 210445; All Sprint ST and Sprint GT models from VIN 208167; All Tiger 1050 models from VIN 287504; Tiger Sport models from VIN 570059
- Item 8. Breather Cover Fixings - Tiger 800 and Tiger 800XC All Models
- Item 9. Audio System - Trophy SE

Item 1.

Description: Upper Drive Belt Guard

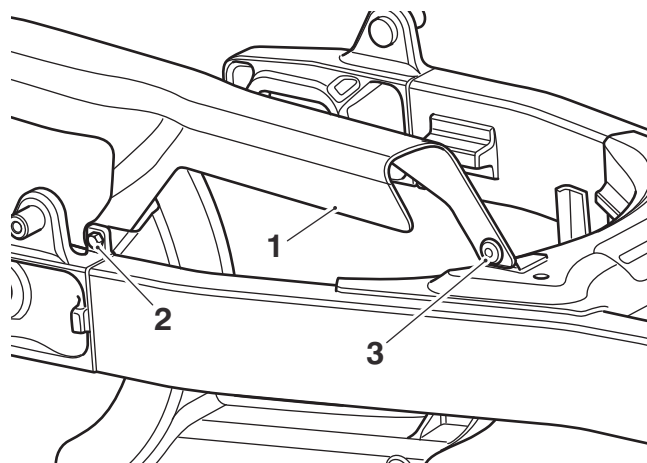
Models affected: Thunderbird All Models

An encapsulated fixing has replaced the rear fixing for the upper drive belt guard on the above models and is retrofittable to all earlier models. The tightening torque remains at **10 Nm** and the fixing must be replaced if loosened or removed.

For models already in service, if the rear fixing for the upper drive belt guard has been removed, the encapsulated fixing (part number T3205064) must be fitted.

Note:

- **If loosened or removed for any reason, the fixing must be replaced.**



- 1. Upper drive belt guard
- 2. Rear fixing
- 3. Front fixing

Please mark your copy of the Service Manual with this information.

Item 2.

Description: Catalytic Converter Mounting Bracket Fixings

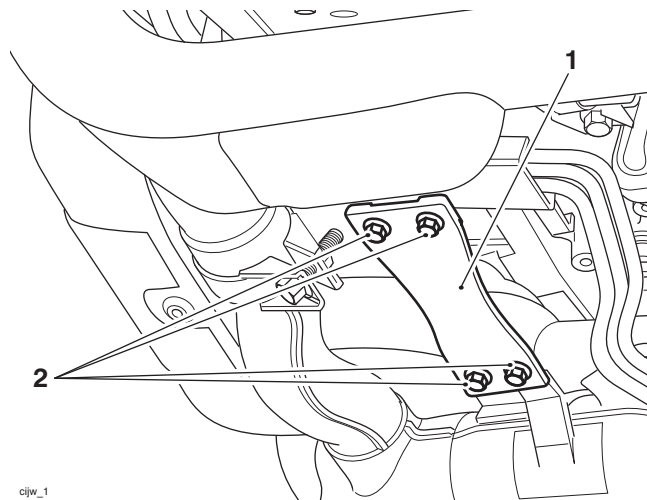
Models affected: Thunderbird Commander and Thunderbird LT

A copper based grease has been added to the fixings securing the catalytic converter mounting bracket on the above models. The tightening torque for the fixings has changed to **9 Nm** to coincide with the introduction of the copper based grease.

If refitting or replacing the catalytic converter mounting bracket fixings, apply a copper based grease to the fixings and tighten to **9 Nm**.

Note:

- **Models already in service need not be re-tightened unless the fixings have been loosened or removed.**



1. Catalytic converter mounting bracket

2. Fixings

When ordering replacement parts, always refer to the EPC.

Please mark your copy of the Service Manual with this information.

Item 3.

Description: Torque Figures Updates

Models affected: Thunderbird All Models

The following torque figures for the above model have changed:

Application	Torque (Nm)	Notes
Throttle cable to twist grip housing union	8 Nm	
Throttle cable to twist grip housing screw	3 Nm	
Cover for headlight bracket	4 Nm	Thunderbird Commander only

Please mark your copy of the Service Manual with this information.

Item 4.

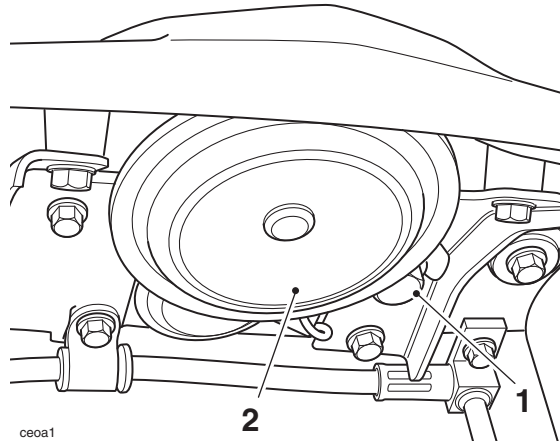
Description: Horn Fixing

Models affected: Rocket III Touring ABS

The torque figure for the horn fixing (mounted on the lower yoke) has changed to **27 Nm** on the above models.

Note:

- **Models already in service need not be re-tightened unless the fixings have been loosened or removed.**



1. Fixing

2. Horn

Please mark your copy of the Service Manual with this information.

Item 5.

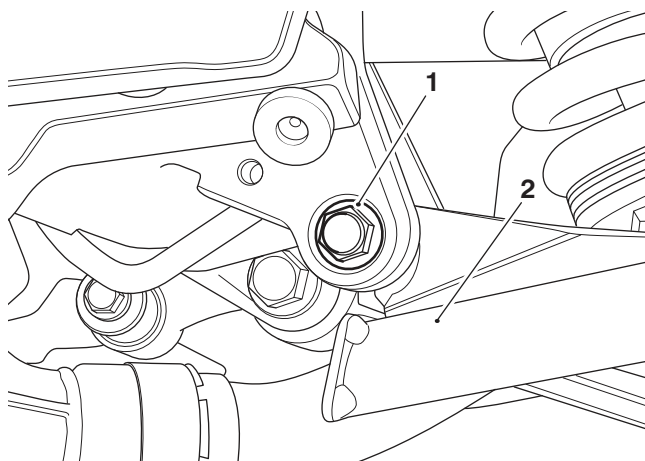
Description: Centre Stand Fixings

Models affected: Trophy and Trophy SE

The torque figure for the centre stand fixings has changed to **70 Nm** on the above models.

Note:

- **Models already in service need not be re-tightened unless the fixings have been loosened or removed.**



1. Fixing, left hand side shown

2. Centre stand

Please mark your copy of the Service Manual with this information.

Item 6.

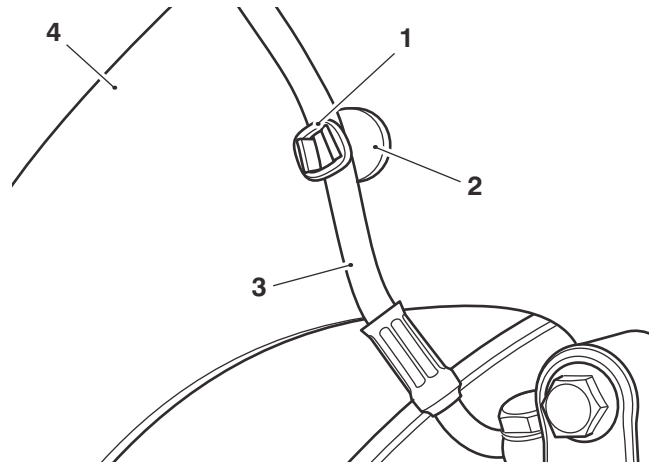
Description: Front Brake Hose Clip

Models affected: Rocket III Roadster ABS

For the above model from VIN 637324, an O-ring has been introduced to secure the front brake hoses to their retaining clips on the front mudguard.

When assembling a new Rocket III Roadster ABS from VIN 637324, there will be two O-rings in the fixings kit that will need to be fitted as described below.

With the front brake hoses in their clips on the front mudguard, fit the O-rings around the outer lugs of the clips as shown in the illustration below.



1. O-ring
2. Retaining clip, right hand side shown
3. Front brake hose
4. Front mudguard

Please mark your copy of the Service Manual with this information.

Item 7.

Description: Clutch Cover Kits

Models affected: All Speed Triple models from VIN 210445; All Sprint ST and Sprint GT models from VIN 208167; All Tiger 1050 models from VIN 287504; Tiger Sport models from VIN 570059

Two new clutch cover spares kits have been released for use with above models and are retrofittable as follows:



Caution

The dipstick assemblies contained in the following kits are matched with the clutch cover assemblies provided and must always be fitted upon installation. Failure to fit the dipstick provided when installing the following kits will result in incorrect oil levels. Running the engine with incorrect oil levels will cause engine damage.

Clutch Cover Kit, T1269065

For use with:

- All Speed Triple models from VIN 210445.

Kit Part Number	Kit Contents	Part Numbers	Quantity
T1269065	Clutch cover assembly, black	T1261757	1
	Dipstick assembly	T1261410	1

Clutch Cover Kit, T1269050

For use with:

- All Sprint ST and Sprint GT models from VIN 208167
- All Tiger 1050 models from VIN 287504
- Tiger Sport models from VIN 570059.

Kit Part Number	Kit Contents	Part Numbers	Quantity
T1269050	Clutch cover assembly, black	T1261757	1
	Dipstick assembly	T1261418	1

When ordering replacement parts, always refer to the EPC.

Please mark your copy of the Service Manual with this information.

Item 8.

Description: Breather Cover Fixings

Models affected: Tiger 800 and Tiger 800XC All Models

The torque figure for the engine breather cover fixings has changed to **10 Nm** on the above models.

Note:

- Models already in service need not be re-tightened unless the fixings have been loosened or removed.**

Please mark your copy of the Service Manual with this information.

Item 9.

Description: **Audio System**

Models affected: **Trophy SE**

It has come to our attention that some owners of the above motorcycle may be experiencing concerns with one or more of the following items relating to the audio unit:

- Radio tuner
- *Bluetooth*[®] connection
- Satellite navigation unit audio.

The purpose of this Technical News item is to give the dealer a better understanding of the audio system to help answer any questions from the owner regarding the audio system.

Radio Tuner

The radio tuner can receive AM/FM/WX/LW depending on its region setting. The table on the following page, shows what radio wavebands are available in the various regions.

For finding and saving a radio station, refer to the Owner's Handbook.

Note:

- **Radio Data System (RDS) is available in Europe.**
- **Radio Broadcast Data System (RBDS) is available in the USA and Canada.**
- **RBDS and RDS are not available in Japan.**

If the tuner region is set to Europe 50, the only RDS information shown will be the Programme Service (PS).

If the tuner region is set to Australia, Europe, South America or Taiwan, the RDS function implemented will be:

- AF - Alternative Frequency list
- EON - Enhanced Other Networks information (including Programme Identification (PI)/Programme Service (PS)/Programme Type (PTY))
- TA - Traffic Announcement identification
- RG - Regional programming mode.

If the tuner region is set to North America, the RBDS uses the Programme Service (PS) to display information received as radio text on the instrument display. This is only available in FM.

For more information on the RDS or RBDS, refer to the Owner's Handbook.

Waveband Table

Region	Band				
	LW	AM (OR MW)	FM	WX (Weather)	XM (Satellite Radio)
North America	N/A	520 - 1,720 kHz 10 kHz steps	87.9 - 107.9 MHz 200 kHz steps 75 µs De-emphasis	7 NOAA channels 162.40 - 162.55 MHz	Channels 1 to 250
South America	N/A	520 - 1,720 kHz 10 kHz steps	87.9 - 107.9 MHz 100 kHz steps 75 µs De-emphasis	N/A	N/A
Europe	153 - 297 kHz 9 kHz steps, 177 kHz and 183 kHz	531 - 1,602 kHz 9 kHz steps	87.5 - 108.0 MHz 100 kHz steps 50 µs De-emphasis	N/A	N/A
Europe 50	153 - 297 kHz 9 kHz steps, 177 kHz and 183 kHz	531 - 1,602 kHz 9 kHz steps	87.5 - 108.0 MHz 100 kHz steps 50 µs De-emphasis	N/A	N/A
Japan	N/A	522 - 1,629 kHz 9 kHz steps	76.1 - 89.9 MHz 100 kHz steps 50 µs De-emphasis	N/A	N/A
Australia	N/A	531 - 1,701 kHz 9 kHz steps	87.5 - 108.0 MHz 100 kHz steps 50 µs De-emphasis	N/A	N/A
Taiwan	N/A	531 - 1,701 kHz 9 kHz steps	87.5 - 108.0 MHz 100 kHz steps 75 µs De-emphasis	N/A	N/A

The radio tuner can be programmed to operate in different regions and should be changed at a Triumph dealer. If the tuner region setting is required to be changed, refer to Technical News 138 issued November 2012 (Item 8).

Bluetooth® Connection

The radio can pair with up to two *Bluetooth*® headsets or one headset and one other compatible *Bluetooth*® device. HEADSET 1 will allow the pairing of one headset.

DEVICE 2 will allow the pairing of one of the following:

- Headset
- Mobile phone
- Streaming music device.

Note:

- **It is not possible to prevent the pairing of incompatible headsets, mobile phones or streaming music.**

For pairing headsets, mobile phones and streaming music devices, refer to the *Bluetooth*[®] Setup section in the Owner's Handbook.

Prior to pairing any devices to the audio unit, ensure they meet the following requirements:

Headsets

- The minimum requirement for a headset to be paired is Advanced Audio Distribution Profile (A2DP) or BT2.1 + EDR. This is for headsets that will receive audio from the audio unit only, and can not be used for mobile phone calls.
- For the headset to be used for mobile phone calls via the audio unit, it must support the Hands Free Profile (HFP).
- For a headset to receive volume control from the audio unit, it must support Audio/Video Remote Control Profile (AVRCP). Only the rider headset uses this function.

Mobile Phone/Other Devices

- The minimum requirement for a mobile phone to pair to the audio unit is either A2DP or HFP.
- For a mobile phone or other device to stream audio to the audio unit, it must support the A2DP source profile.
- For a mobile phone or other device to receive next/previous track commands from the audio unit, it must support AVRCP.
- For a mobile phone to be used for phone calls via the audio unit, it must support HFP.

Headset Audio

Note:

- **Audio can not be played through the audio unit speakers and the headsets at the same time.**

When one or more headsets are paired and the audio output has been set to HEADSETS, the audio unit will stream the selected audio source to the headset(s) using A2DP.

Once the headset has been initially paired with the audio unit, the user will only need to turn on the headset and the audio unit will automatically search for the paired headset.

Depending upon the capabilities of the headsets, the user may be able to do one the following:

- Pair their mobile phone directly to the headset
- Pair a streaming music device directly to the headsets
- Pair the rider and passenger headsets directly together for intercom.

If a device is directly paired to the headsets, the audio unit will have no control over them.

Mobile Phone Calls

If one headset, supporting HFP, and a mobile phone is paired to the audio unit, incoming calls will be announced on the display screen and the user may ANSWER or IGNORE the call. If headsets are not paired to the audio unit, an incoming call will still be displayed but the user will only have the option to IGNORE the call.

If the audio source is set to SPEAKERS then, if the call is answered, the audio source will switch to headsets. When the call is ended the audio source will switch back to speakers.

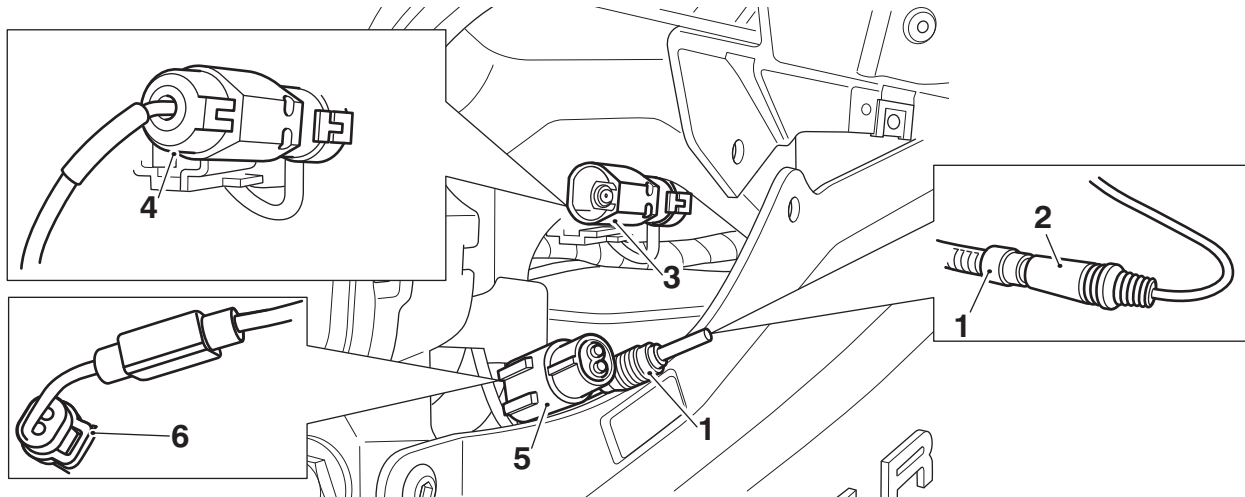
Satellite Navigation Unit

We would like to draw the attention of dealers to a specific difference between the XM Satellite Radio connector and the GPS (satellite navigation system) audio connector on the above model.

When connected the GPS audio connector allows the GPS sound system to override the motorcycles audio system.

The XM Satellite Radio antenna is designed for use in the USA and Canada only therefore the connector will not be used outside these markets.

If for any reason the GPS unit is fitted to the cradle with its power turned off, the GPS unit will automatically mute the audio. To adjust the audio volume either power on or disconnect the GPS unit from its cradle.



1. GPS harness (satellite navigation) audio connector
2. GPS unit (satellite navigation) audio connector
3. XM Satellite Radio antenna connector (except USA and Canadian models)
4. XM Satellite Radio antenna connector (USA and Canadian models only)
5. GPS harness (satellite navigation) power supply connector
6. GPS unit (satellite navigation) power supply connector

The audio unit provides support for the Garmin Zumo[®] Satellite Navigation Systems models 660 and 665.

Other satellite navigation systems may be compatible.

The 3.5 mm audio jack and the power supply connector are located inside the cockpit behind the left hand mirror. For details on the installation of a navigation system refer to the navigation mounting kit and power lead kit instructions for Trophy and Trophy SE.

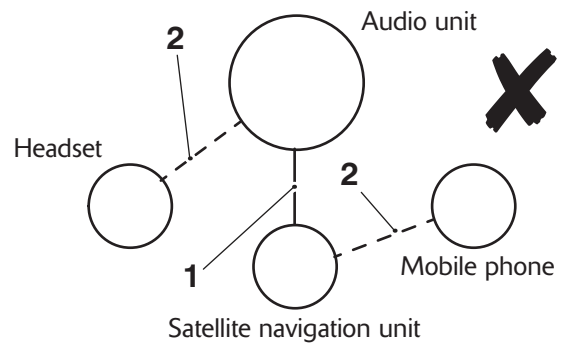
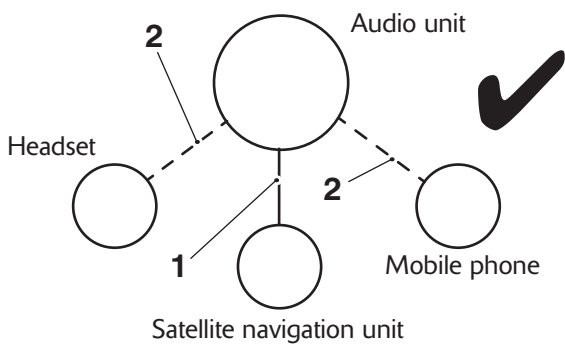
When the satellite navigation unit has been correctly installed, the audio unit will accept the audio output from the navigation unit so the spoken command from the unit can be heard via the speakers or headset. The output from the navigation unit is mono so the left input channel is used by the audio unit.

The audio unit also allows the user to play compatible stereo audio files from the navigation unit and output to the speakers or headsets. To have stereo audio for music, NAV AUDIO must be enabled in the audio unit, refer to the NAV Audio and NAV settings in the Owner's Handbook.

Many satellite navigation units are capable of being paired with a *Bluetooth*[®] headset or mobile phone and therefore operate as a communication hub. Pairing this way will bypass the control that is available through the Trophy SE audio unit.

At present the satellite navigation units cannot be connected to the audio unit via *Bluetooth*[®] due to the different profiles.

Triumph recommend that the satellite navigation unit be connected to the audio unit by harness, and the headsets, mobile phone and streaming music devices be connected to the audio unit by *Bluetooth*[®] to get the best performance via the audio unit.



- 1. **Harness connection**
- 2. ***Bluetooth*[®] connection**

Please mark your copy of the Service Manual with this information.

Initial and date when read and return to central file holder

Service Manager	Parts Manager	Sales Manager	Workshop Supervisor	Technician 1	Technician 2