



No.: 14 TS-19REV

October 31, 2014

TO: Service Locations

FROM: Service Systems Development

SUBJECT: **DD Platform High Pressure Fuel Lines**

NOTE: This document supersedes 13 TS-24.

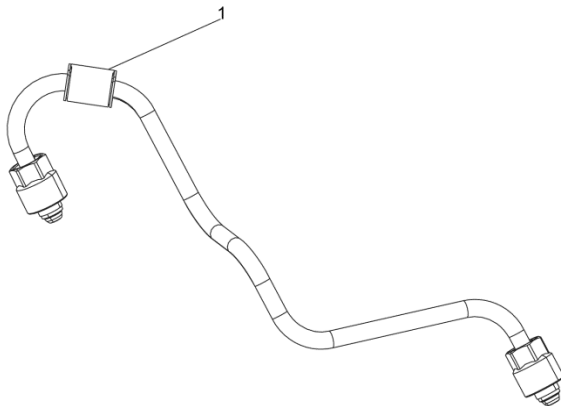
ISSUE

With the exception of the return lines P-clip bolt on the two-filter system, the components in the images below from the high pressure fuel pump to the fuel rail are no longer reusable; they are ONE-time-use only.

REQUIRED ACTION

The high pressure fuel rail feed lines from the high pressure fuel pump to the fuel rail, mounting bracket, P-clips, vibration dampers, return lines p-clip (three-filter fuel system only), mounting bracket bolts, P-clip bolts, vibration damper bolts, and return lines P-clip bolt (three-filter fuel system only) **MUST** be replaced if one of these parts are removed from the engine during any repair.

All five kit numbers listed below have permanent vibration dampers (1) installed on the high pressure fuel rail feed lines.



d470305

Three-filter fuel system:

Service kit P/N: A0000700832 contains all of the necessary parts to replace the high pressure fuel rail feed lines on the EPA07/10 DD13 engines.

Service kit P/N: A0000701132 contains all of the necessary parts to replace the high pressure fuel rail feed lines on the EPA07/10 DD15/16 engines.

Two-filter fuel system:

Service kit P/N: A0000701032 contains all of the necessary parts to replace the high pressure fuel rail feed lines on the EPA10 and GHG14 DD13 engines.

Service kit P/N: A0000700932 contains all of the necessary parts to replace the high pressure fuel rail feed lines on the EPA10 and GHG14 DD15/16 engines.

Service kit P/N: A4730704432 contains all of the necessary parts to replace the high pressure fuel rail feed lines on the GHG14 DD15AT engines.

Additionally:

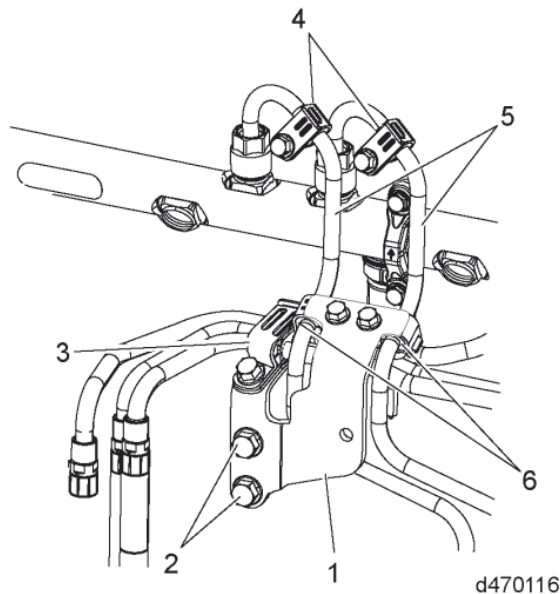
Reference 13 TS-5 for additional information on the differences between the two-and three-filter fuel system.

The return lines P-clip is not removed on the two-filter fuel system.

The return lines P-clip bolt is reused in the two-filter fuel system.

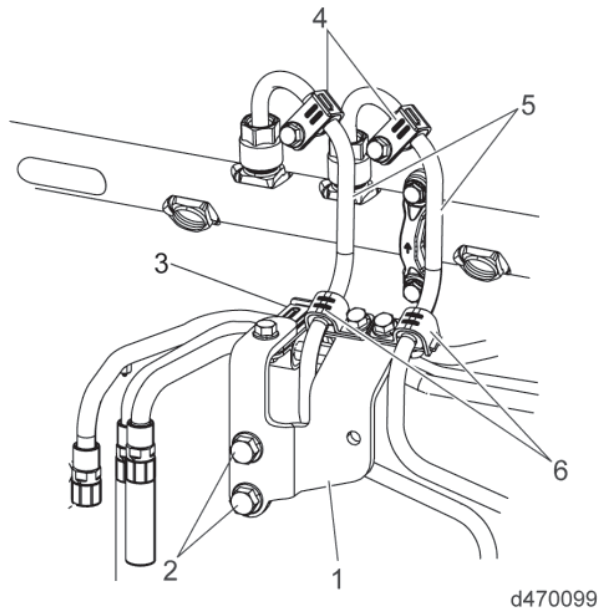
DO NOT install bolts and fittings using power tools. All bolts and fittings **MUST** be installed and torqued to specification using hand tools to prevent damage and possible fuel leakage.

a) The graphic below illustrates the three-filter fuel system for DD15/16 engines with a serial number before 472901S0012796.



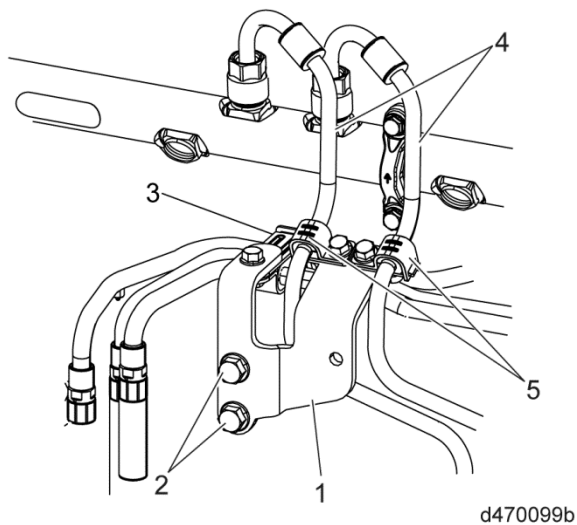
1. Mounting bracket
2. Mounting bracket bolts
3. Return lines P-clip and bolt
4. Vibration dampers and bolts
5. High pressure fuel feed lines
6. Vibration dampers and bolts

b) The graphic below illustrates the three-filter fuel system for DD15/16 engines with a serial number after 472901S0012796 and three-filter fuel system for all the DD13 engines.



1. Mounting bracket
2. Mounting bracket bolts
3. Return lines P-clip and bolt
4. Vibration dampers and bolts
5. High pressure fuel rail feed lines
6. P-clips and bolts

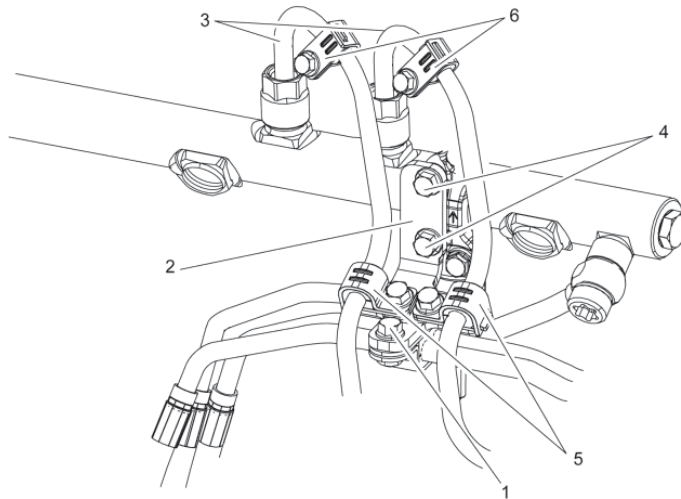
c) The graphic below illustrates the three-filter fuel system for all DD engines with a serial number after 471901S0236004 for DD13 engines, 472901S0236308 for DD15/16 engines and all three-filter fuel system DD engines with a new high pressure fuel rail feed line service kit installed.



1. Mounting bracket
2. Mounting bracket bolts
3. Return lines P-clip and bolt

4. High pressure fuel rail feed lines
5. P-clips and bolts

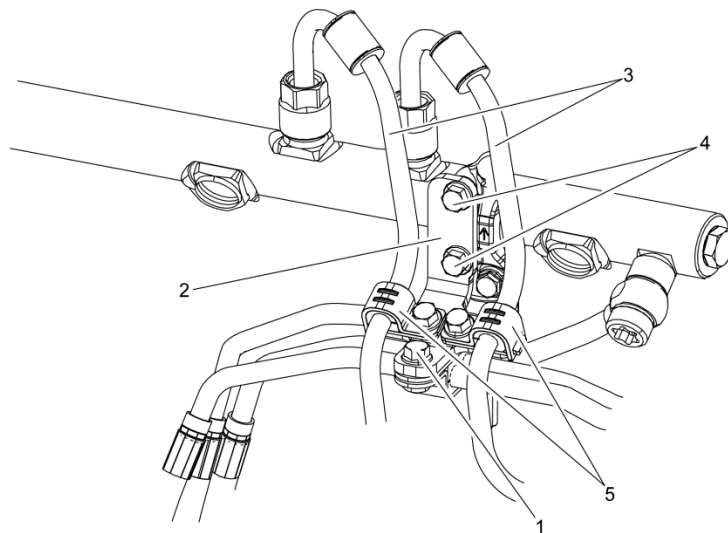
d) The graphic below illustrates the two-filter KM59 GEN1 fuel system for the DD13/15/16 engines.



d470160b

1. Return lines P-clip bolt (reused)
2. Mounting bracket
3. High pressure fuel rail feed lines
4. Mounting bracket bolts
5. P-clips and bolts
6. Vibration dampers and bolts

e) The graphic below illustrates the two-filter KM59 GEN1 fuel system for the DD13/15/16 engines with a serial number after 471901S0236004 for DD13 engines, 472901S0236308 for DD15/16 engines and all two-filter KM59 GEN1 fuel system DD13/15/16 engines with a new high pressure fuel rail feed line service kit installed.

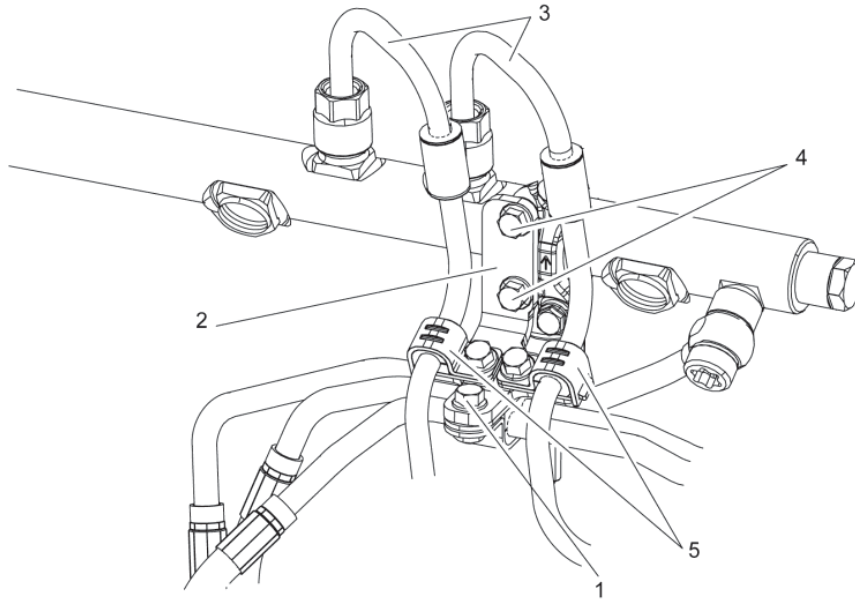


d470160c

1. Return lines P-clip bolt (reused)
2. Mounting bracket

3. High pressure fuel rail feed lines
4. Mounting bracket bolts
5. P-clips and bolts

f) The graphic below illustrates the two-filter KM63 GEN2 fuel system for the DD15AT engine.



d470251

1. Return lines P-clip bolt (reused)
2. Mounting bracket
3. High pressure fuel rail feed lines
4. Mounting bracket bolts
5. P-clips and bolts

Refer to the appropriate section of Power Service Literature for removal and installation information.

CONTACT INFORMATION

Please contact the Detroit® Customer Support Center at 800-445-1980 or email csc@daimler.com if you have any questions.