

1 11 10-14



Service Information Bulletin

SUBJECT	DATE
EPA10 DOC Inlet Pressure Sensor	November 2014

Additions, Revisions, or Updates

Publication Number / Title	Platform	Section Title	Change
DDC-SVC-MAN-0083	EPA10 DD Platform	Removal of the EPA10 Diesel Oxidation Catalyst Inlet Pressure Sensor without Sensor Box	This is a new section. A step was added to remove fairing.
		Installation of the EPA10 Diesel Oxidation Catalyst Inlet Pressure Sensor without Sensor Box	
		Removal of the EPA10 Diesel Oxidation Catalyst Inlet Pressure Sensor with Sensor Box	Updated section title. A step was added to remove fairing.
		Installation of the EPA10 Diesel Oxidation Catalyst Inlet Pressure Sensor with Sensor Box	

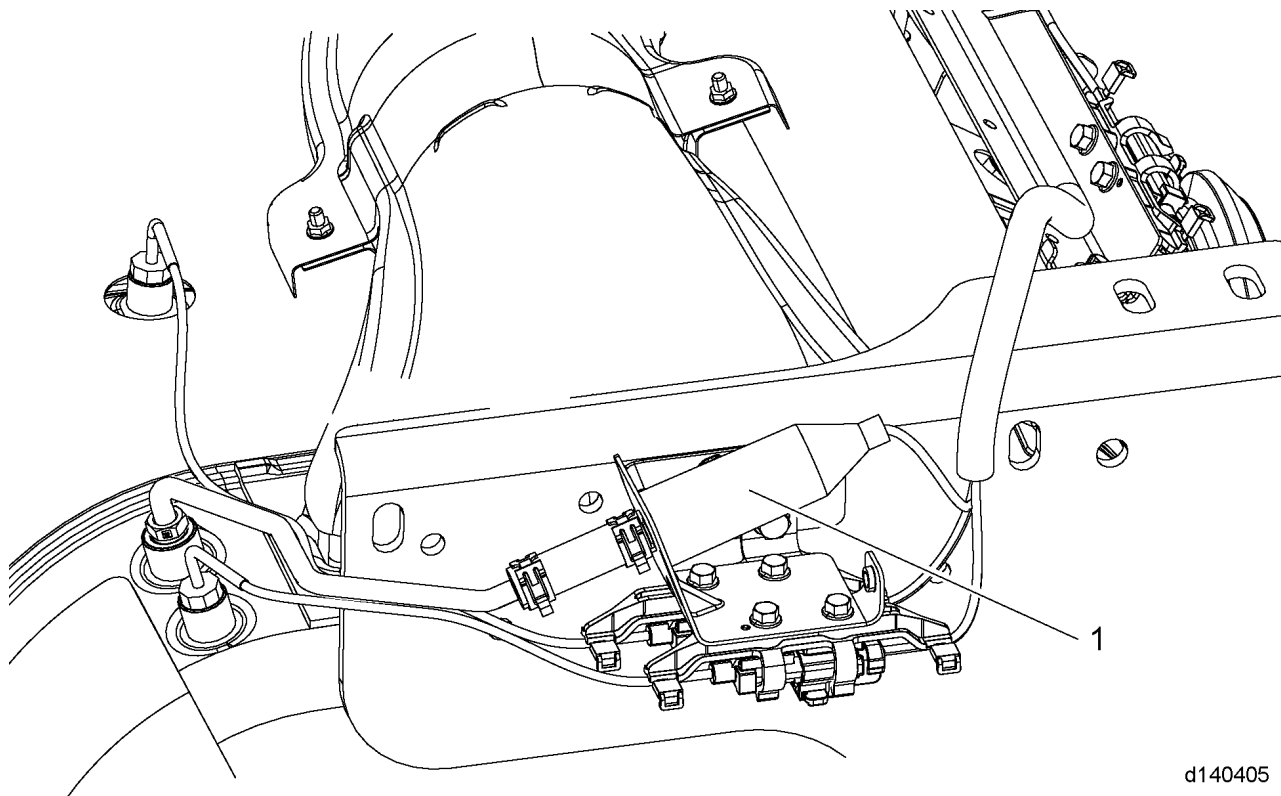


13400 Outer Drive, West, Detroit, Michigan 48239-4001
 Telephone: 313-592-5000
www.demanddetroit.com

2 Removal of the EPA10 Diesel Oxidation Catalyst Inlet Pressure Sensor without Sensor Box

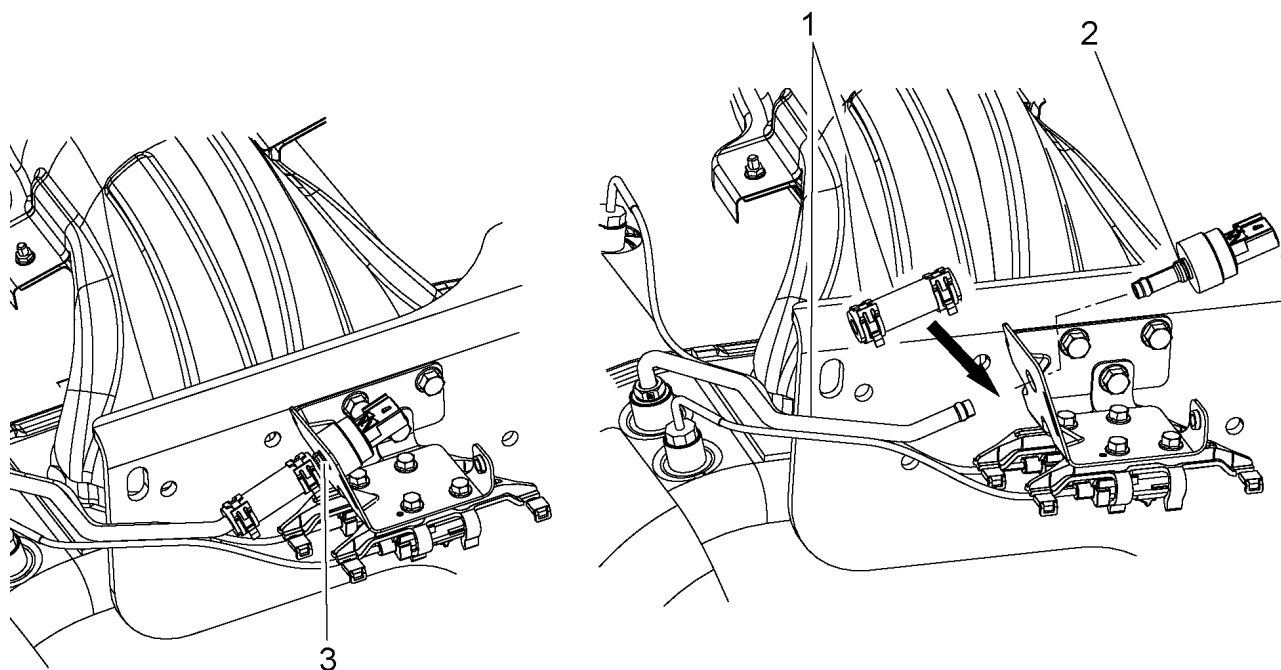
Remove as follows:

1. Shut off engine and apply the parking brake, chock the wheels, and perform any other applicable safety steps.
2. Disconnect the batteries.
3. If required, remove the side fairing or step shield. Refer to OEM procedures.
4. Slide back protective sleeve (1) from the Diesel Oxidation Catalyst (DOC) inlet pressure sensor and disconnect the electrical harness.



d140405

5. Remove the DOC inlet pressure sensor hose (1).
6. Remove C-clip retaining inlet sensor to bracket (3).
7. Remove the DOC inlet sensor (2).

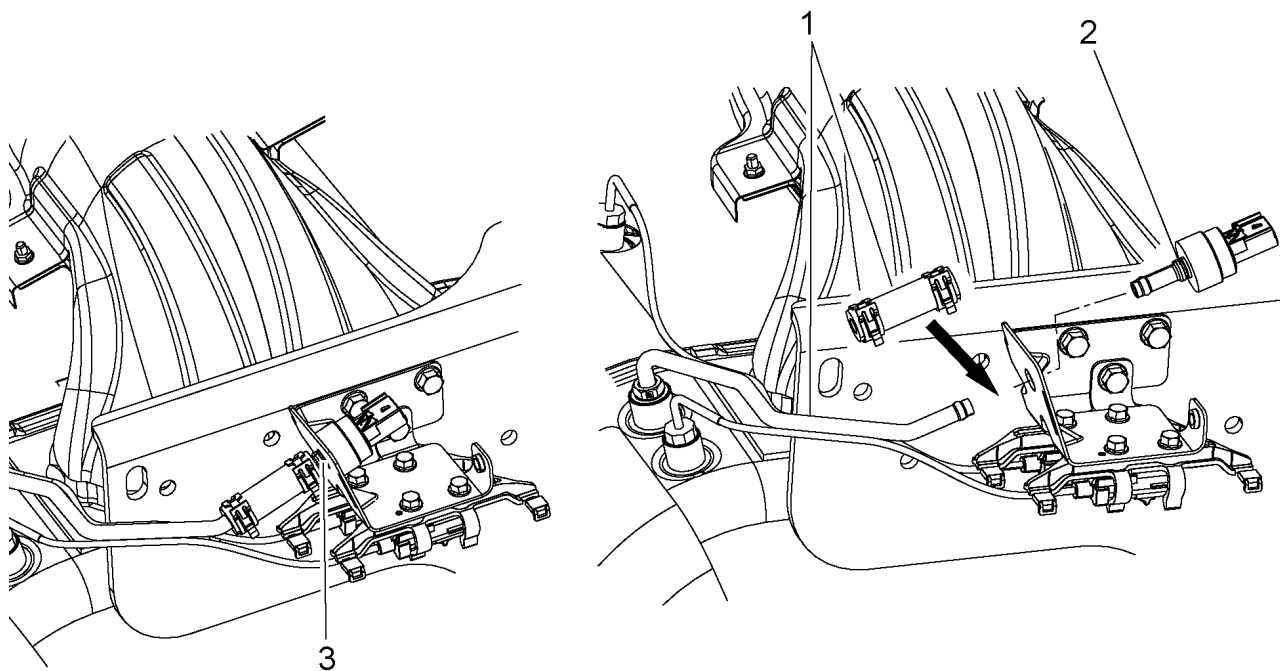


d140373

3 Installation of the EPA10 Diesel Oxidation Catalyst Inlet Pressure Sensor without Sensor Box

Install as follows:

1. Install the Diesel Oxidation Catalyst (DOC) inlet pressure sensor (2) into the sensor bracket.
2. Install C-clip (3).
3. Connect the DOC inlet pressure sensor electrical harness connector to the DOC inlet pressure sensor and slide protective cover over sensor.
4. Install the DOC pressure sensor hose (1).
5. If removed, install the side fairing or step shield. Refer to OEM procedures.
6. Connect the batteries.

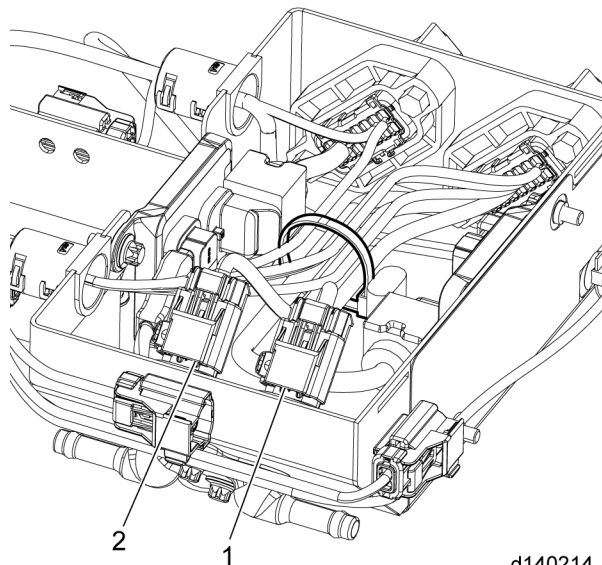


d140373

4 Removal of the EPA10 Diesel Oxidation Catalyst Inlet Pressure Sensor with Sensor Box

Remove as follows:

1. Shut off engine and apply the parking brake, chock the wheels, and perform any other applicable safety steps.
2. Disconnect the batteries.
3. If required, remove the side fairing or step shield. Refer to OEM procedures.
4. Remove the sensor box cover by removing the bolt and disengaging the latches.
5. Disconnect the Diesel Oxidation Catalyst (DOC) inlet pressure sensor electrical harness connector (1) inside the sensor box.

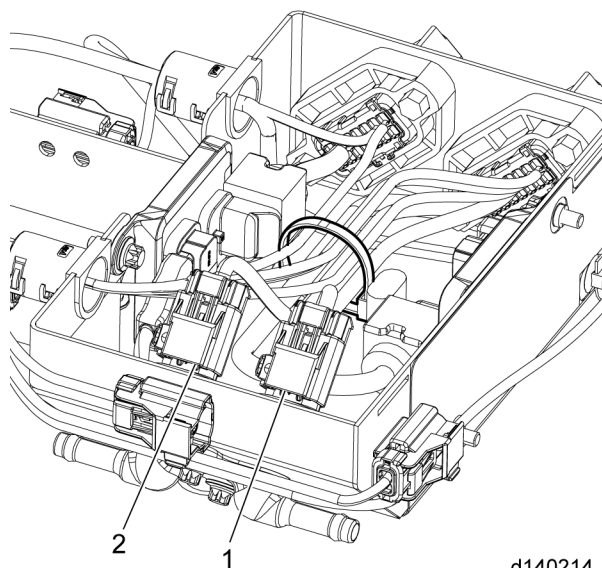


6. Unscrew the DOC inlet pressure sensor from the sensor box manifold and remove from sensor box.

5 Installation of the EPA10 Diesel Oxidation Catalyst Inlet Pressure Sensor with Sensor Box

Install as follows:

1. Screw the Diesel Oxidation Catalyst (DOC) inlet pressure sensor into the sensor box manifold.
 - Torque pressure sensor M12 to 14 to 16 N·m (10 to 12 lb·ft).
 - Torque pressure sensor M14 to 15 to 18 N·m (11 to 13 lb·ft).
2. Connect the DOC inlet pressure sensor electrical harness connector (1) to the DOC inlet pressure sensor inside the sensor box.



d140214

3. Install the sensor box cover.
4. If removed, install the side fairing or step shield. Refer to OEM procedures.
5. Connect the batteries.