

IMPORTANT CAMPAIGN INFORMATION

ATTENTION: Dealer Principal, Warranty Manager, Service Manager, Parts Manager

Freightliner Dealers – U.S. and Canada
Western Star and Sterling Dealers – U.S. and Canada
FCCC Dealers – U.S. and Canada
Direct Warranty Customers – U.S. and Canada
Thomas Built Bus Dealers – U.S. and Canada
Direct Warranty Customers – U.S. and Canada

Daimler Trucks North America LLC

WARRANTY CAMPAIGNS DEPARTMENT

P.O. Box 4090 800-547-0712
Portland, Oregon 97208-4090 FAX 503-745-9009

If you have questions about this Letter, please submit your inquiry on the Web at:

[AccessFreightliner.com / Support / My Tickets and Submit an Inquiry](http://AccessFreightliner.com/Support/MyTicketsandSubmitanInquiry)

REF #: ICI14-016

Effective: 09/19/14

Release: 09/19/14

SUBJECT: Notice for Ricon Chair Lift Platform Recall on TBB Buses

This letter is to inform you that DTNA and Ricon Corporation have decided that a defect which relates to motor vehicle safety exists on specific Thomas Built Buses FS-65, Saf-T-Liner, and Minotour DRW buses with certain Ricon Corporation S-Series lifts. The recall is being conducted by Ricon and all repairs will be made by Ricon distributors. The notices to customers are expected to mail the week of 09/22/14.

There is no action for DTNA dealers to take. This is for your information should the dealership receive any questions from customers. DTNA's cover letters and Ricon's notices are on the following pages for reference.

If you have questions or need further information regarding this recall, please contact Ricon directly at (800) 322-2884.

The information contained in this letter supercedes and supplements any related policies and procedures in any previously released bulletins, the Warranty Manual, and/or previously released letters. Failure to read or distribute this letter will not exempt addressees from compliance with the information contained herein.

Daimler Trucks North America LLC

Daimler Trucks North America LLC
P.O. Box 4090
Portland, OR 97208-4090
800.547.0712 Phone
503.745.9009 Fax

September 2014
NHTSA # 14V-477 School Buses
NHTSA # 14V-478 Non-School Buses

IMPORTANT SAFETY RECALL

Subject: Ricon Chair Lift Platforms

This notice is sent to you in accordance with the requirements of the National Traffic and Motor Vehicle Safety Act.

Daimler Trucks North America LLC (DTNA) has decided that a defect which relates to motor vehicle safety exists on specific Thomas Built Buses FS-65 school buses, Saf-T-Liner school buses and non-school buses, and Minotour DRW school buses and non-school buses manufactured January 3, 2006, through August 1, 2014, with certain Ricon Corporation S-Series lifts.

The platforms included on the subject S-Series model wheelchair lifts can exhibit cracking of the platform pivot plate while in the stowed position, which, if left unchecked, can propagate to the point where separation of the rear portion of the pivot plate occurs, rendering the lift potentially inoperable and possibly unsafe to the operator, resulting in possible personal injury.

Please inspect the lift platform on your vehicle as soon as possible using the enclosed inspection procedure then contact a Ricon dealer to arrange to have this Recall completed. The Recall will take from half an hour to an hour, depending on the work needed, and will be performed at no charge to you. See the enclosed Ricon Recall Notice for details.

If you have leased this vehicle to another person, federal regulations require you to send a copy of this notice to the lessee by first class mail within 10 days of your receipt of this notice.

For questions regarding this Recall, please contact Ricon Customer Service at (800) 322-2884. If you are not able to have the defect remedied without charge and within a reasonable time, you may wish to submit a complaint to the Administrator, National Highway Traffic Safety Administration, 1200 New Jersey Avenue, SE., Washington, DC 20590; or call the Vehicle Safety Hotline at (888) 327-4236 (TTY: 800-424-9153); or to <http://www.safercar.gov>.

WARRANTY CAMPAIGNS DEPARTMENT
Enclosure



Ricon Corporation
A Wabtec Company
1135 Aviation Place
San Fernando, CA 91340

Phone: 818.267.3000
Fax: 818.267.3001
www.Riconcorp.com

SAFETY RECALL NOTICE

[Date]

[End User]

RE: Safety Defect Recall Notification (Recall Notification 14E-041)

Dear [End User]:

This notice is sent to you in accordance with the requirements of the National Traffic and Motor Vehicle Safety Act. Ricon has decided that a defect which relates to motor vehicle safety exists in the Ricon wheelchair lift(s) installed in your vehicle(s).

! I M P O R T A N T !

- Your Ricon Wheelchair Lift is being recalled
- Contact Ricon Corporation immediately

WHAT IS BEING RECALLED:

Ricon DOT Public Use, "S" 2000 and 5500 Series lifts manufactured after January 1, 2006 equipped with platforms measuring 32"x51" and 34"x54". The affected population is comprised of six (6) primary model numbers:

S2005-XXXXXXXX
S2010-XXXXXXXX
S5005-XXXXXXXX
S5010-XXXXXXXX
S5505-XXXXXXXX
S5510-XXXXXXXX

The total number of lifts being recalled is approximately 28,000.

WHY IS IT BEING RECALLED:

Under certain conditions present in some applications, the platforms included on the subject S-Series model wheelchair lifts can exhibit cracking of the platform pivot plate while in the stowed position which, if left unchecked, can propagate to the point where separation of the rear portion of the pivot plate occurs rendering the lift potentially inoperable and possibly unsafe for the operator.



Ricon Corporation
A Wabtec Company
1135 Aviation Place
San Fernando, CA 91340

Phone: 818.267.3000
Fax: 818.267.3001
www.Riconcorp.com

In the event the aforementioned crack occurs on both sides of the platform and is allowed to propagate to the point of material separation on both sides it is possible for the lift platform to lean against the vehicle lift door(s) and fall out of the vehicle when the door(s) is(are) opened putting the lift operator at risk.

WHAT YOU AS THE OWNER/OPERATOR SHOULD DO:

Immediately locate and inspect the affected unit(s) in your fleet pursuant to Ricon Service Bulletin RSB125B. If the platform is cracked as illustrated, the platform must be replaced before placing the vehicle back in service. To mitigate the circumstances that precipitate cracking, Ricon will provide an elastomeric bumper kit. Ricon will provide a field modification instruction and all material required to mitigate this recall at no charge. It will be the responsibility of the lift owners to execute the mitigation. Materials are available by calling Ricon Customer Service at (800)322-2884, or by emailing admin14E041@wabtec.com or by locating the nearest Ricon servicing dealer using the locator on the Ricon website – www.riconcorp.com

In the event the pivot plate(s) on your potentially affected lift(s) are NOT CRACKED as illustrated in RSB125B, it(they) may be placed back in service for up to 30 days before it(they) must be re-inspected and mitigated with the elastomeric bumper kit described above.

WHAT RICON CORPORATION WILL DO:

Ricon will provide materials as outlined above. If after attempting to have your vehicle(s) repaired you believe you have not been able to have your vehicle(s) remedied within a reasonable amount of time, you may submit a complaint to the Administrator, National Highway Traffic Safety Administration, 1200 New Jersey Ave., S.E., Washington, D.C., 20590; or call the toll-free Vehicle Safety Hotline at 1-888-327-4236 (TTY: 1-800-424-9153); or go to <http://www.safercar.gov>.

Thank you for your prompt attention to this matter. If you have any questions concerning these procedures please contact Ricon Customer Service at (800)322-2884.

We apologize for the inconvenience this safety recall will cause.

Sincerely,

Stanton D. Saucier, PE
Vice President – Marketing and Product Planning
Ricon Corp.

Subject: S-Series Platforms: 34in. x 54in., 32in. x 51in.
Applicable Products: S1205, S2005, S2010, S5005, S5010, S5505, S5010
Effectivity: 6/24/2014

RICON SERVICE BULLETINS ARE FOR USE BY PROFESSIONAL SERVICE TECHNICIANS, AND ARE NOT INTENDED FOR USE BY NON-PROFESSIONALS OR AMATEURS. SERVICE BULLETINS ALERT TECHNICIANS TO ISSUES THAT MAY OCCUR WITH RICON PRODUCTS, AND ARE INTENDED TO ASSIST THE TECHNICIAN IN THE PROPER SERVICE OF THOSE PRODUCTS.

PROFESSIONAL SERVICE TECHNICIANS HAVE THE BACKGROUND AND KNOWLEDGE TO PERFORM MAINTENANCE WORK PROPERLY AND SAFELY.

AN ISSUE DESCRIBED BY A SERVICE BULLETIN DOES NOT NECESSARILY APPLY TO EVERY UNIT IN A PRODUCT LINE. A RICON AUTHORIZED SERVICE TECHNICIAN WILL BE ABLE TO DETERMINE WHICH UNITS CAN BENEFIT FROM THE INFORMATION PROVIDED HERE.

Introduction

This bulletin provides a brief description of a technical issue related to the inspection and possible replacement of the platform assembly of certain S-Series wheelchair lifts.

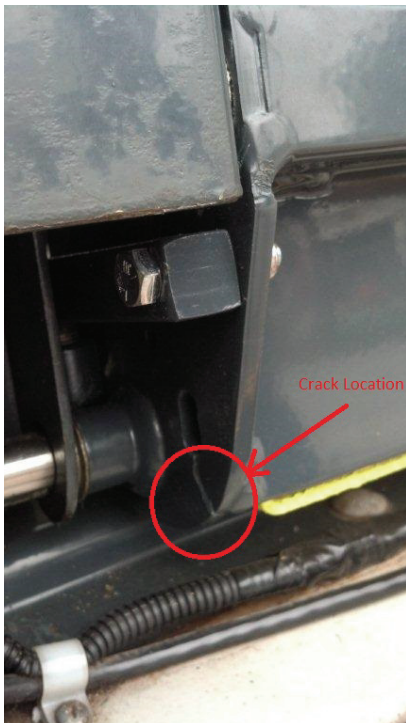
Incorporation

Inspection and possible replacement of the platform assembly used on wheelchair lift configurations beginning with the following part numbers:

S1205, S2005, S2010, S5005, S5010, S5505, S5510

Information

Under certain conditions the side plate of the larger platforms included on the subject S-Series model wheelchair lifts can exhibit cracking while in the stowed position which, if left unchecked can propagate to the point where separation of the rear portion of the side plate occurs rendering the lift inoperable and possibly unsafe to use.



Cause

The cracking as illustrated has been observed on less than 5% of the subject population and appears to be caused by a combination of factors including but not necessarily limited to, incomplete stowing of the lift and/or maladjustment or otherwise malfunctioning of the stow lock devise combined with a violent side- to- side movement that might be associated with traversing curbs, speed bumps and other variable road conditions, especially at higher speeds.

Corrective Action

If cracks are found, the platform must be replaced as soon as possible. Use the following part numbers for the associated model numbers.

For Models S1205-G, S1205VG	Use PN 33851
For Models S2005-S, S5005-S, S2005-T, S5005-T	Use PN V2-PF-389
For Models S2005-F, S5005-F, S2005-G, S2005-C, S2005VF, S2005-J	Use PN 32466
For Models S2005-L, S5005-L	Use PN 38330
For Models S2010-S, S2010-T, S5010-S, S5010-T	Use PN 16622
For Models S2010VF, S2010-C, S2010-F, S5010-F	Use PN 32469
For Models S5505-S	Use PN 34846
For Models S5505VF, S5505-C, S5505-F	Use PN 33485
For Models S5510VF, S5510-F, S5510C, S5510-J	Use PN 34249

Daimler Trucks North America LLC

Daimler Trucks North America LLC
P.O. Box 4090
Portland, OR 97208-4090
800.547.0712 Phone
503.745.9009 Fax

September 2014
Transport Canada #14-330 School Buses
Transport Canada #14-338 Non-School Buses

Subject: Ricon Chair Lift Platforms

This notice is sent to you in accordance with the Canadian Motor Vehicles Safety Act.

Daimler Trucks North America LLC (DTNA) is providing this Recall Notice with respect to certain vehicles with equipment manufactured by Ricon Corporation. The vehicles affected are specific Thomas Built Buses FS-65 school buses, Saf-T-Liner school buses and non-school buses, and Minotour DRW school buses and non-school buses manufactured January 3, 2006, through August 1, 2014, with certain Ricon Corporation S-Series lifts.

DTNA and Ricon have decided that a defect which relates to motor vehicle safety exists in the vehicles mentioned above. The platforms included on the subject S-Series model wheelchair lifts can exhibit cracking of the platform pivot plate while in the stowed position, which, if left unchecked, can propagate to the point where separation of the rear portion of the pivot plate occurs, rendering the lift potentially inoperable and possibly unsafe to the operator, resulting in possible personal injury.

Please inspect the lift platform on your vehicle as soon as possible using the enclosed inspection procedure then contact a Ricon dealer to have this Recall completed. See the enclosed Ricon Recall Notice for details.

For questions regarding this Recall, please contact Ricon Customer Service at (800) 322-2884.

WARRANTY CAMPAIGNS DEPARTMENT
Enclosure



Ricon Corporation
A Wabtec Company
1135 Aviation Place
San Fernando, CA 91340

Phone: 818.267.3000
Fax: 818.267.3001
www.Riconcorp.com

SAFETY RECALL NOTICE

[Date]

[End User]

RE: Safety Defect Recall Notification (Recall Notification 14E-041)

Dear [End User]:

This notice is sent to you in accordance with the requirements of the Canadian Motor Vehicle Safety Act. Ricon has decided that a defect which relates to motor vehicle safety exists in the Ricon wheelchair lift(s) installed in your vehicle(s).

! I M P O R T A N T !

- Your Ricon Wheelchair Lift is being recalled
- Contact Ricon Corporation immediately

WHAT IS BEING RECALLED:

Ricon DOT Public Use, "S" 2000 and 5500 Series lifts manufactured after January 1, 2006 equipped with platforms measuring 32"x51" and 34"x54". The affected population is comprised of six (6) primary model numbers:

S2005-XXXXXXXX
S2010-XXXXXXXX
S5005-XXXXXXXX
S5010-XXXXXXXX
S5505-XXXXXXXX
S5510-XXXXXXXX

The total number of lifts being recalled is approximately 28,000.

WHY IS IT BEING RECALLED:

Under certain conditions present in some applications, the platforms included on the subject S-Series model wheelchair lifts can exhibit cracking of the platform pivot plate while in the stowed position which, if left unchecked, can propagate to the point where separation of the rear portion of the pivot plate occurs rendering the lift potentially inoperable and possibly unsafe for the operator.



Ricon Corporation
A Wabtec Company
1135 Aviation Place
San Fernando, CA 91340

Phone: 818.267.3000
Fax: 818.267.3001
www.Riconcorp.com

In the event the aforementioned crack occurs on both sides of the platform and is allowed to propagate to the point of material separation on both sides it is possible for the lift platform to lean against the vehicle lift door(s) and fall out of the vehicle when the door(s) is(are) opened putting the lift operator at risk.

WHAT YOU AS THE OWNER/OPERATOR SHOULD DO:

Immediately locate and inspect the affected unit(s) in your fleet pursuant to Ricon Service Bulletin RSB125B. If the platform is cracked as illustrated, the platform must be replaced before placing the vehicle back in service. To mitigate the circumstances that precipitate cracking, Ricon will provide an elastomeric bumper kit. Ricon will provide a field modification instruction and all material required to mitigate this recall at no charge. It will be the responsibility of the lift owners to execute the mitigation. Materials are available by calling Ricon Customer Service at (800)322-2884, or by emailing admin14E041@wabtec.com or by locating the nearest Ricon servicing dealer using the locator on the Ricon website – www.riconcorp.com

In the event the pivot plate(s) on your potentially affected lift(s) are NOT CRACKED as illustrated in RSB125B, it(they) may be placed back in service for up to 30 days before it(they) must be re-inspected and mitigated with the elastomeric bumper kit described above.

WHAT RICON CORPORATION WILL DO:

Ricon will provide materials as outlined above.

Thank you for your prompt attention to this matter. If you have any questions concerning these procedures please contact Ricon Customer Service at (800)322-2884.

We apologize for the inconvenience this safety recall will cause.

Sincerely,

Stanton D. Saucier, PE
Vice President – Marketing and Product Planning
Ricon Corp.

Subject: S-Series Platforms: 34in. x 54in., 32in. x 51in.
Applicable Products: S1205, S2005, S2010, S5005, S5010, S5505, S5010
Effectivity: 6/24/2014

RICON SERVICE BULLETINS ARE FOR USE BY PROFESSIONAL SERVICE TECHNICIANS, AND ARE NOT INTENDED FOR USE BY NON-PROFESSIONALS OR AMATEURS. SERVICE BULLETINS ALERT TECHNICIANS TO ISSUES THAT MAY OCCUR WITH RICON PRODUCTS, AND ARE INTENDED TO ASSIST THE TECHNICIAN IN THE PROPER SERVICE OF THOSE PRODUCTS.

PROFESSIONAL SERVICE TECHNICIANS HAVE THE BACKGROUND AND KNOWLEDGE TO PERFORM MAINTENANCE WORK PROPERLY AND SAFELY.

AN ISSUE DESCRIBED BY A SERVICE BULLETIN DOES NOT NECESSARILY APPLY TO EVERY UNIT IN A PRODUCT LINE. A RICON AUTHORIZED SERVICE TECHNICIAN WILL BE ABLE TO DETERMINE WHICH UNITS CAN BENEFIT FROM THE INFORMATION PROVIDED HERE.

Introduction

This bulletin provides a brief description of a technical issue related to the inspection and possible replacement of the platform assembly of certain S-Series wheelchair lifts.

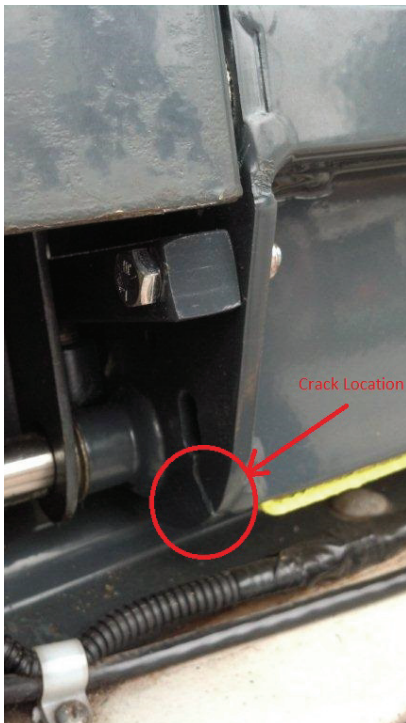
Incorporation

Inspection and possible replacement of the platform assembly used on wheelchair lift configurations beginning with the following part numbers:

S1205, S2005, S2010, S5005, S5010, S5505, S5510

Information

Under certain conditions the side plate of the larger platforms included on the subject S-Series model wheelchair lifts can exhibit cracking while in the stowed position which, if left unchecked can propagate to the point where separation of the rear portion of the side plate occurs rendering the lift inoperable and possibly unsafe to use.



Cause

The cracking as illustrated has been observed on less than 5% of the subject population and appears to be caused by a combination of factors including but not necessarily limited to, incomplete stowing of the lift and/or maladjustment or otherwise malfunctioning of the stow lock devise combined with a violent side- to- side movement that might be associated with traversing curbs, speed bumps and other variable road conditions, especially at higher speeds.

Corrective Action

If cracks are found, the platform must be replaced as soon as possible. Use the following part numbers for the associated model numbers.

For Models S1205-G, S1205VG	Use PN 33851
For Models S2005-S, S5005-S, S2005-T, S5005-T	Use PN V2-PF-389
For Models S2005-F, S5005-F, S2005-G, S2005-C, S2005VF, S2005-J	Use PN 32466
For Models S2005-L, S5005-L	Use PN 38330
For Models S2010-S, S2010-T, S5010-S, S5010-T	Use PN 16622
For Models S2010VF, S2010-C, S2010-F, S5010-F	Use PN 32469
For Models S5505-S	Use PN 34846
For Models S5505VF, S5505-C, S5505-F	Use PN 33485
For Models S5510VF, S5510-F, S5510C, S5510-J	Use PN 34249