



Reliability Driven™

Service Bulletin No. 410

MODEL	D Series	TYPE	Field Change Program	SECTION/GROUP	8-Engine	DATE	June 4, 2014
SUBJECT	DIESEL EXHAUST FLUID PRESSURE LINE HEAT SHIELD						
CONDITIONS							

Customer Complaint:

Motor Coach Industries ("MCI") has become aware that the diesel exhaust fluid (DEF) pressure line may exhibit signs of fatigue and melting. The addition of a heat shield installed over the DEF pressure line routed from the dosing module to the pump will reduce the potential of premature fatigue and melting.

Cause:

The failure is due to elevated heat from the exhaust system.

Corrective Action:

MCI strongly encourages owners of the D series coaches listed in the table below to implement the steps in this procedure as soon as possible.

59742	59764 to 59789	59829 to 59845	59861 to 59894	59896 to 59906
59923	59989 to 59992	12604 to 12741	12743 to 12755	12757 to 12847
12901 to 12962				

Parts

Qty.	New P/N	Description
1	26-08-0023	Kit, Heat Sleeve, D Coach <i>Kit contents are:</i>
1	08-20-2458	Heat Shield, Reflectsleeve, 1450E
2	08-20-2459	Tie Straps, SST
10	19-4-47	Clamp (utilized quantity to vary per coach installation)
a/r	T08-1281	Clip, Spring Clip Connector, DEF Hose



Service Procedure:

WARNING

Read this entire procedure before beginning work.

Use Safe Shop Practices At All Times.

WARNING

To avoid personal injury, never enter or perform work in the engine compartment prior to positioning the ENGINE RUN and ENGINE START switches on the engine compartment remote control box to the OFF position. Allow enough time for components to cool down prior to working in the engine compartment.

1. Position coach to utilize a lift to access the diesel exhaust fluid (DEF) pressure line mounting hardware.
2. Turn the main battery disconnect switch to the OFF position.

WARNING

Before lifting the coach, exhaust the tag axle air springs. The tag axle must not hang unsupported on the shock absorbers.

Raise coach to the desired height. Position jackstands at the front and rear frame support points, according to Figure 1, to ensure that the coach is securely supported before attempting work underneath the coach.

Position additional jackstands under the tag axle for support.



REFER TO MANUAL

Refer to Section 3F / Lifting and Towing, in the D Series Maintenance Manual for the basic rules, procedures and safety precautions that must be followed before a coach is lifted.

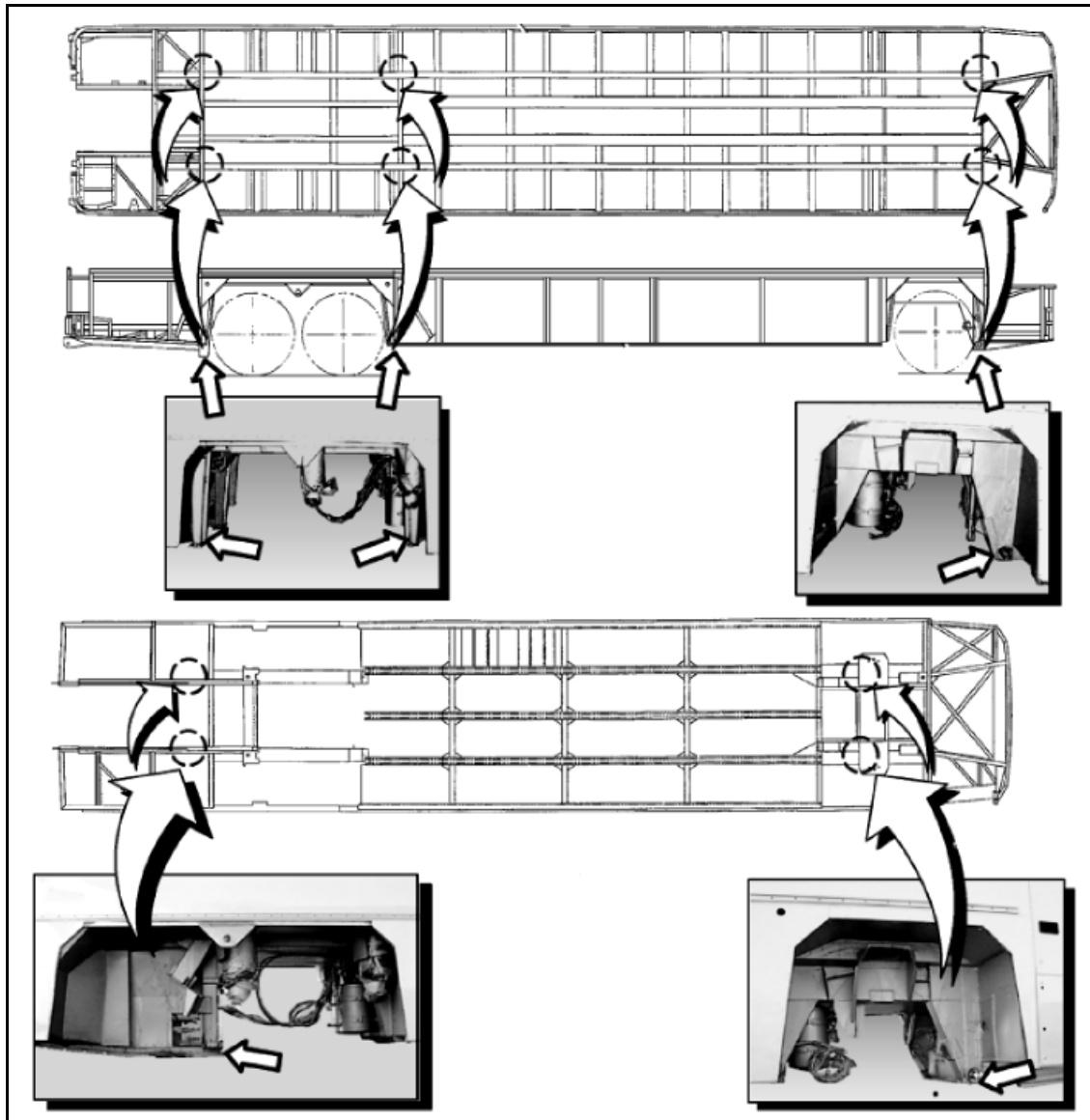


Figure 1. Underframe jackstand support points (Section 3G / Maintenance Manual)

3. Enter the coach cabin and locate the engine compartment access hatch cover at the rear of the cabin. Remove and retain the hardware. Carefully lift the hatch cover and place aside to be re-installed at a later step in this procedure.
4. Open the engine compartment doors as well as the curbside, rear side service compartment door.
5. Locate the diesel exhaust fluid (DEF) pressure line in the rear, roadside section of the engine compartment (refer to Figures 2 and 3).

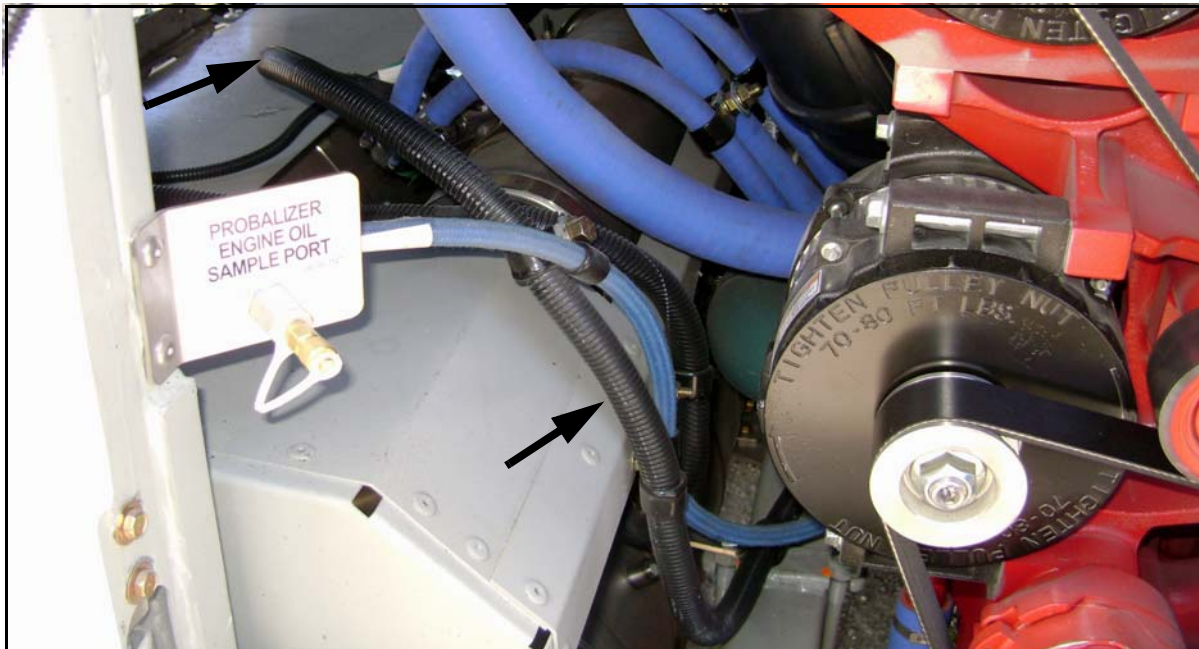


Figure 2.

CAUTION

To avoid internal damage to the connector, do not pry off the spring-lock connector from the dosing module.

6. Follow the routing of the DEF pressure line to locate the connection at the dosing module (refer to Figure 3). Apply pressure to the button on the spring-lock connector located at the end of the DEF pressure line to release the line from the dosing module.
7. Cover the open end of the DEF pressure line as well as the doser connector to prevent contaminants from entering the system.

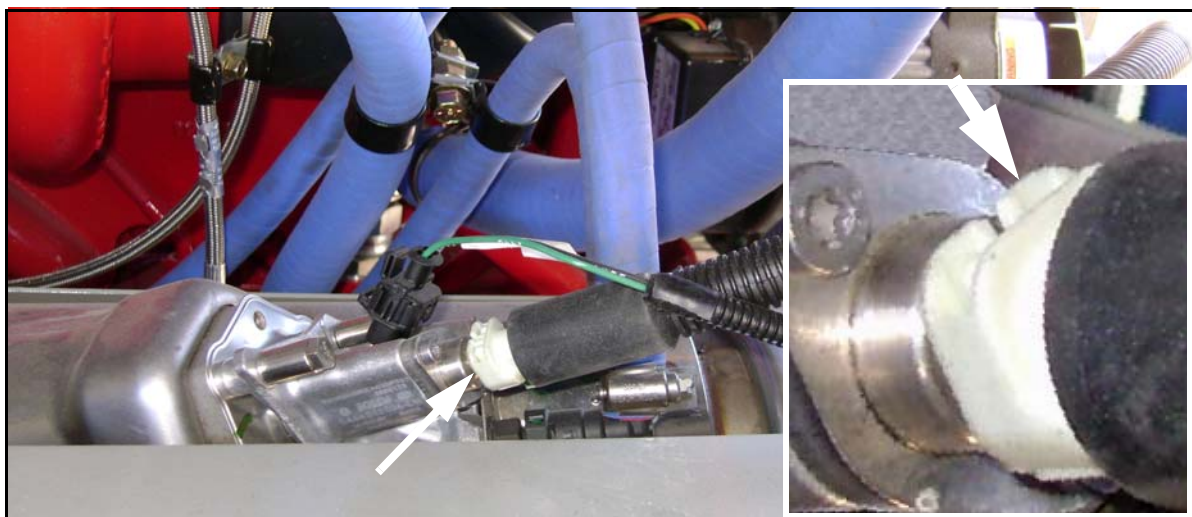


Figure 3.

8. Follow the routing of the DEF pressure line in the engine compartment and locate the line support clamps mounted to the engine rail (refer to Figure 4 and 5). Remove and retain the two (2) line support clamps and mounting hardware shown in Figures 4 and 5.



Figure 4.

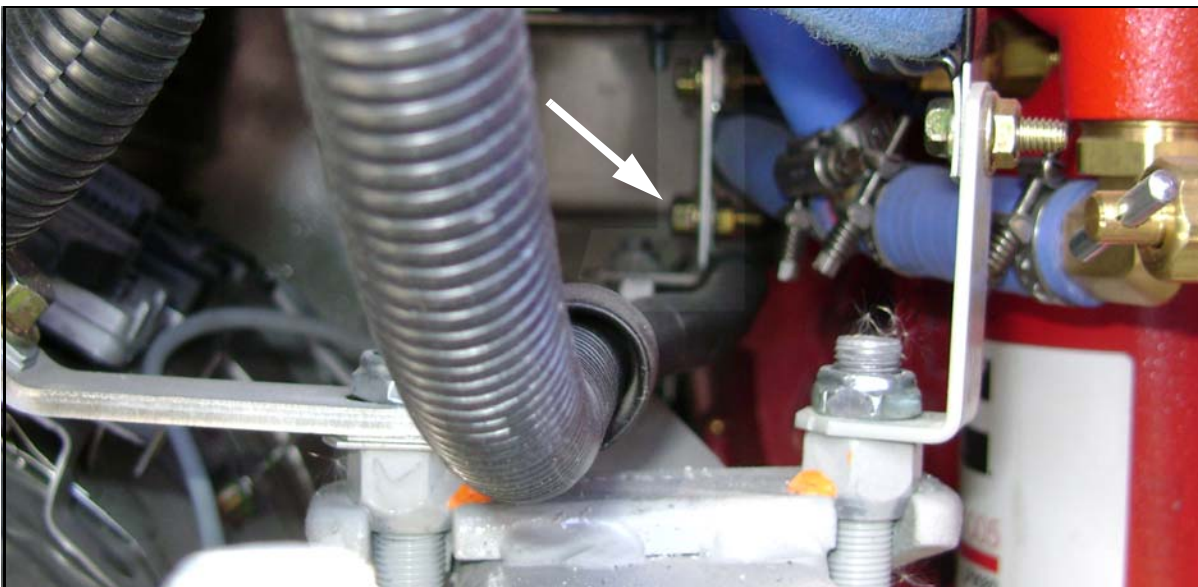


Figure 5.

9. Follow the routing of the DEF pressure line in the engine compartment and locate the line support clamps utilized from the dosing module to the rear bulkhead. Remove the remaining line support clamps and mounting hardware. Retain the hardware and discard the clamps.

10. Enter the coach cabin and locate the DEF pressure line routing and line support clamps below the engine compartment access hatch. Remove the line support clamps mounting hardware. Retain the hardware and discard the clamps.
11. Orient one end of the heat shield, p/n 08-20-2458, over the disconnected end of the DEF pressure line (at the dosing module). Carefully route the heat shield over the line all the way back to the rear bulkhead.

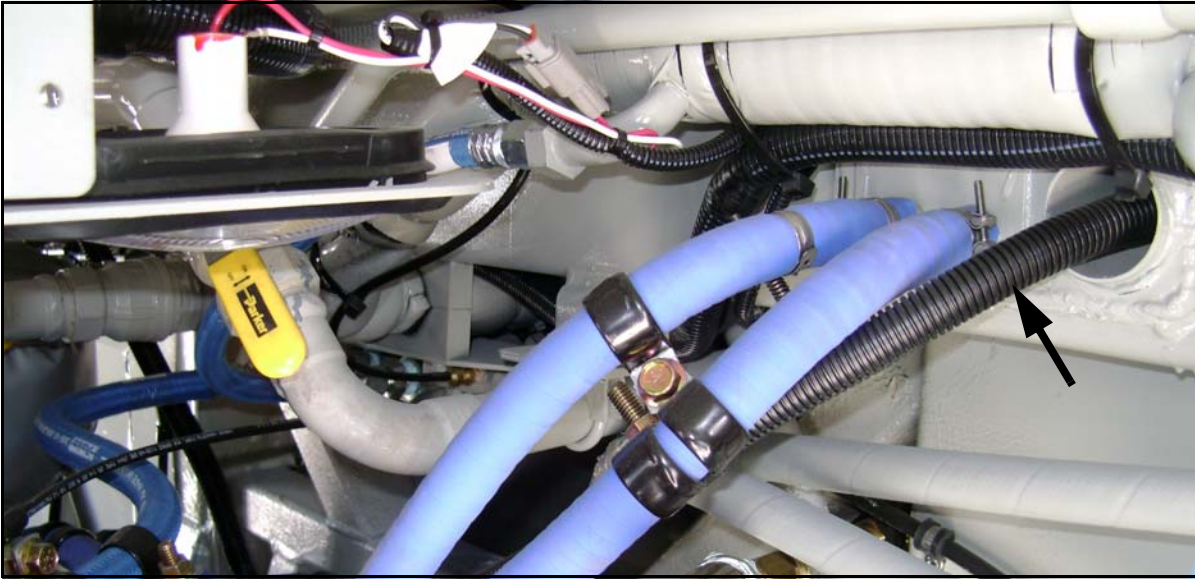


Figure 6. View of the DEF pressure line at the rear bulkhead from the curbside, rear side service compartment

CAUTION

Visually check the open end of the DEF pressure line to ensure that no dirt or debris enter the system.

12. Remove the cover from the disconnected end of the DEF pressure line and the doser connector. Visually inspect the spring-lock connector located at the end of the DEF pressure line. If the clip on the spring-lock connector is damaged, replace damaged clip with p/n T08-1281. Orient and install the DEF pressure line on the dosing module.

NOTICE

To ensure proper installation, install the tie strap at the ends of the heat shield.

13. Orient and install the tie strap, p/n 08-20-2459, over the heat shield at the dosing module (refer to Figure 7). Carefully pull the tie strap to secure, ensuring no damage to the hose body. Cut the excess tail. Install another tie strap on the opposite end of the DEF pressure line at the rear bulkhead.



Figure 7. Reference photo.

14. Using the existing mounting hardware removed in Step 8 of this procedure, re-install the engine cradle line support clamp. Tighten to secure.

NOTICE

To prevent damage to the DEF pressure line, do not re-use the existing line support clamps (other than the engine rail location).

15. Secure the DEF pressure line along its routing in the engine compartment using the existing mounting hardware and the new line support clamp, p/n 19-4-47. Tighten to secure.
16. Re-install the engine compartment access hatch cover.
17. Close the engine compartment doors and the curbside, rear side service compartment doors.

Procedure Complete.



Mail or fax the completed limited warranty claim form and verification form to MCI's warranty department, or photocopy and mail to:

MCI Fleet Support
Attn: Warranty Department
7001 Universal Coach Drive
Louisville, KY 40258
Fax Number 1-800-360-8886

to receive credit for the hours used to complete this task. Contact the MCI Fleet Support Technical Center at 1-800-241-2947 for any further information.

Field Change Program Conditions:

The parts required for this change will be supplied without charge.

A labor allowance of 1.2 hours will be granted for the procedure of installing the specified part(s) in this bulletin on D Series coaches.

This labor allowance will be credited to your MCI Fleet Support Parts Account on receipt of the attached "MCI Field Change Program Verification Form" and a "Warranty Claim Form" as detailed in your Owner Warranty manual to MCI's Warranty department. A "MCI Field Change Program Verification Form" needs to be submitted for each VIN affected. Photocopy the attached "MCI Field Change Program Verification Form" as required for the number of affected coaches in your fleet.

This program will end on Dec. 19, 2014.

Motor Coach apologizes for any inconvenience resulting from this campaign, but urges you to implement this change as soon as possible.

Sincerely,

Motor Coach Industries