

T E C H T I P

SCR Related Memory Reset Procedure

SUBJECT VEHICLES:

Conventional and COE trucks equipped with SCR.

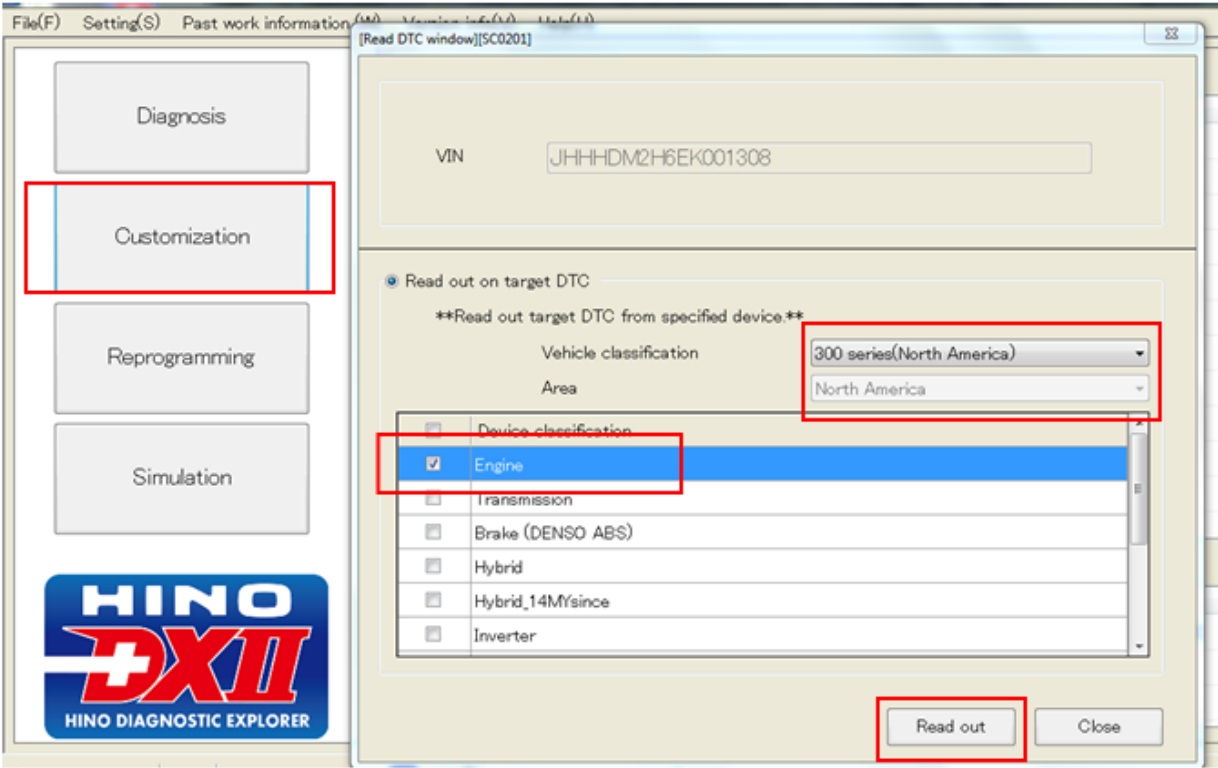
Note: This technical tip is provided as technical information and is not authorization for a warrantable repair.

OVERVIEW:

A subject vehicle may exhibit an illuminated check engine lamp with DTC (Diagnostic Trouble Code) P204F (Malfunction of urea SCR System). The DTC P204F cannot be cleared until the DCU codes have been repaired, cleared and the SCR related memory has been reset with the below procedure.

REPAIR PROCEDURE:

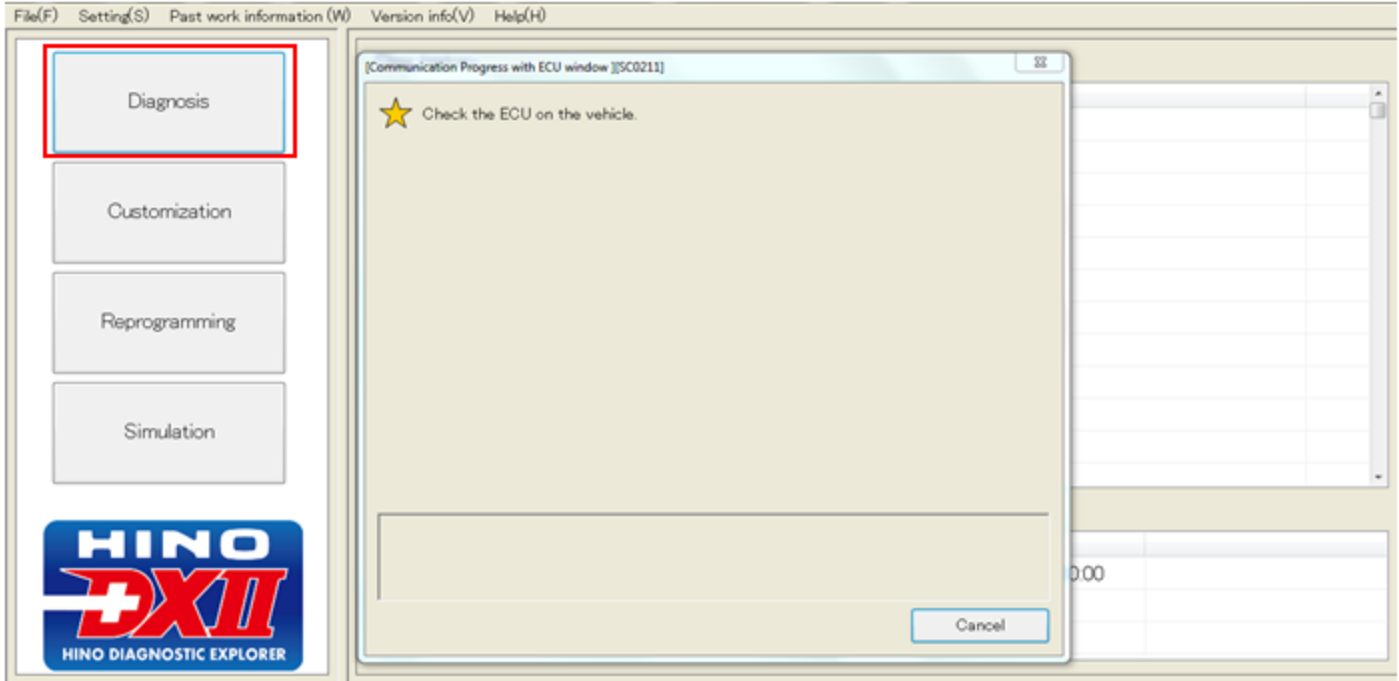
1. The VIN # will populate in the window, select the correct vehicle depending on what you are working on from the drop down boxes. Place a check next to the "Engine" selection and select "Read Out".



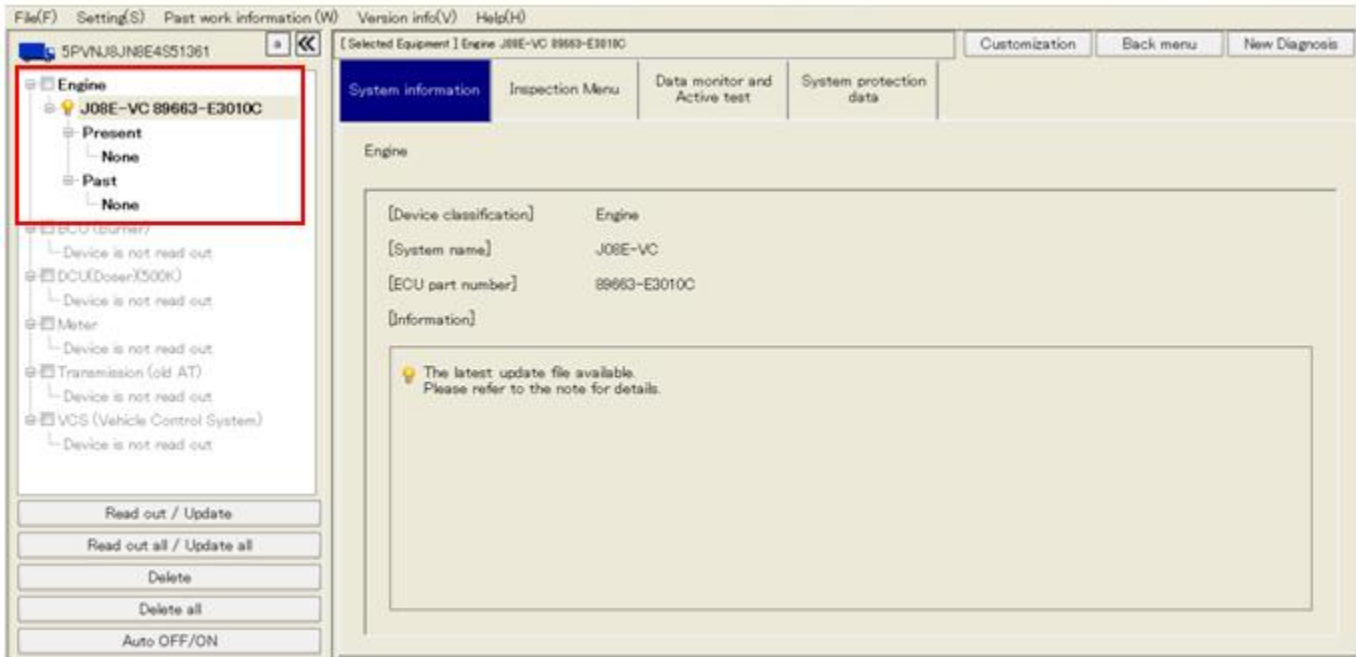
Tech Tip No:	TT-14-025
Group:	0-GENERAL
Issue Date:	8/26/2014

TECH TIP

2. Select "Diagnosis" on the left side of the screen.

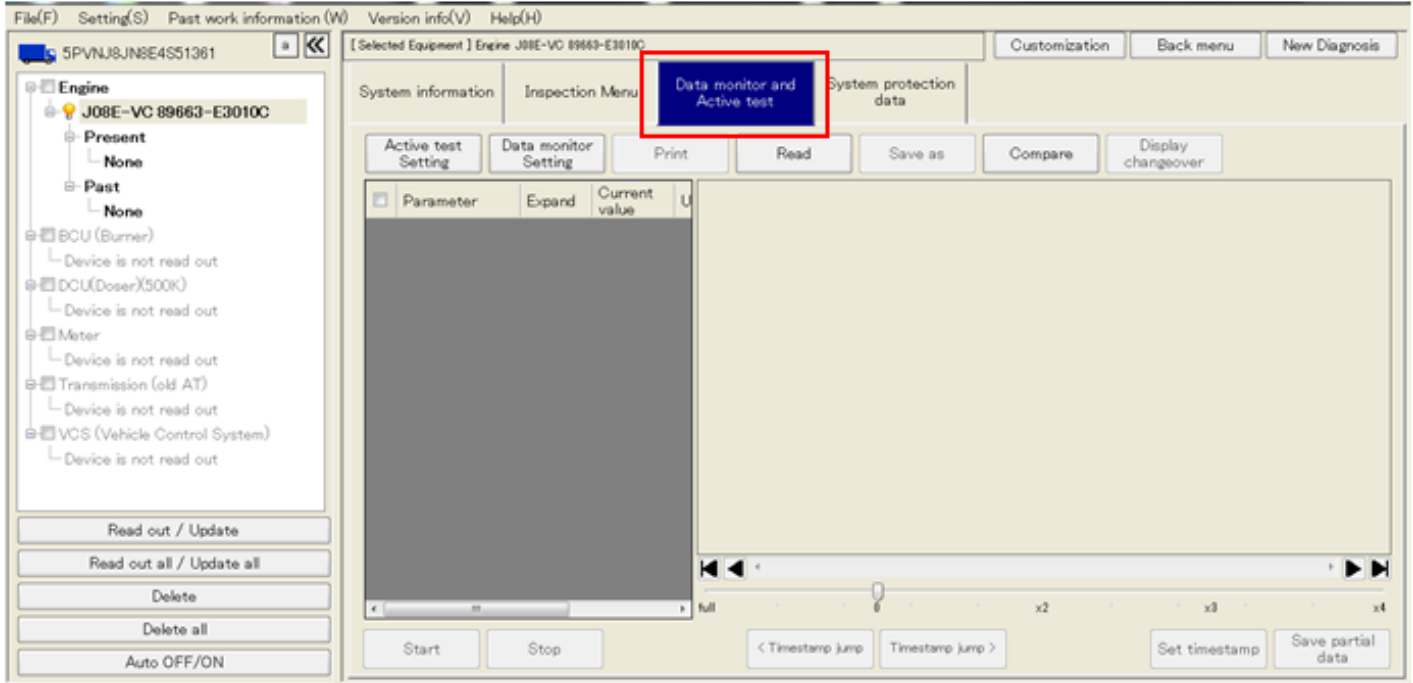


3. Select the "ECU" on the left side of the screen.

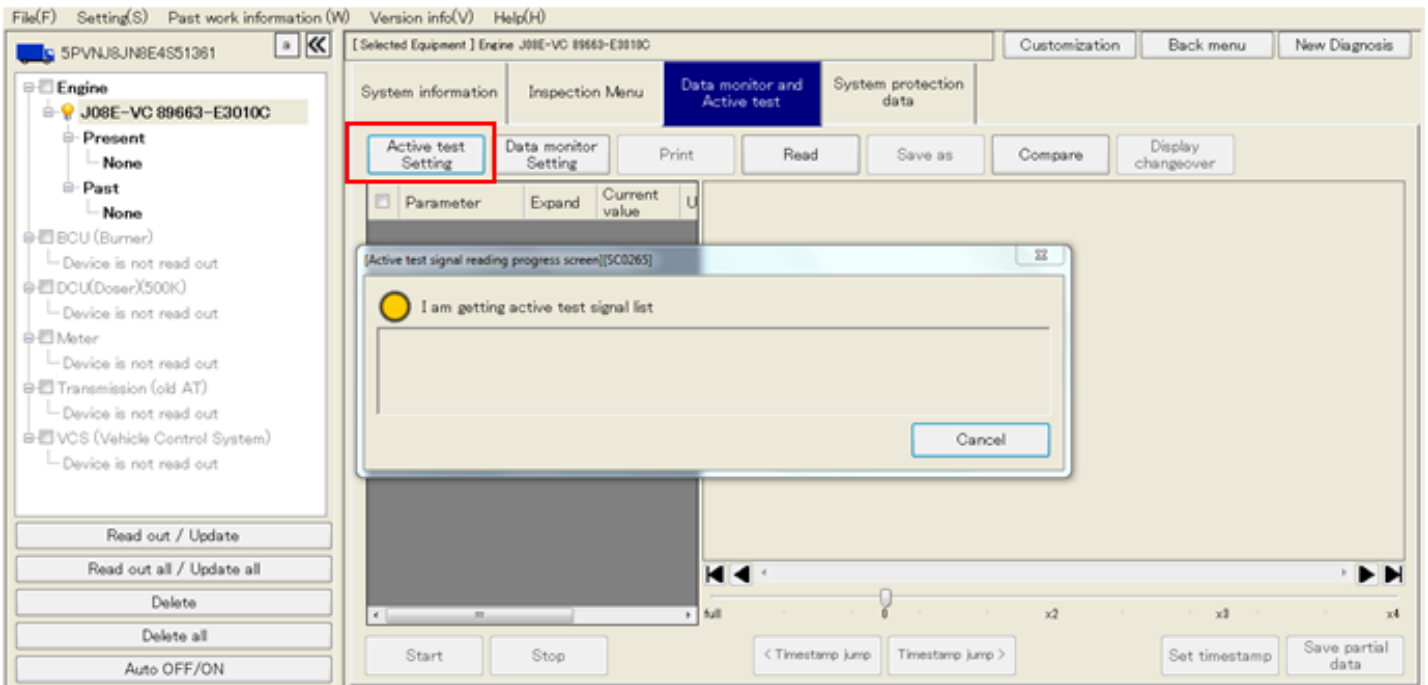


TECH TIP

4. Select the “Data monitor and Active test” tab.

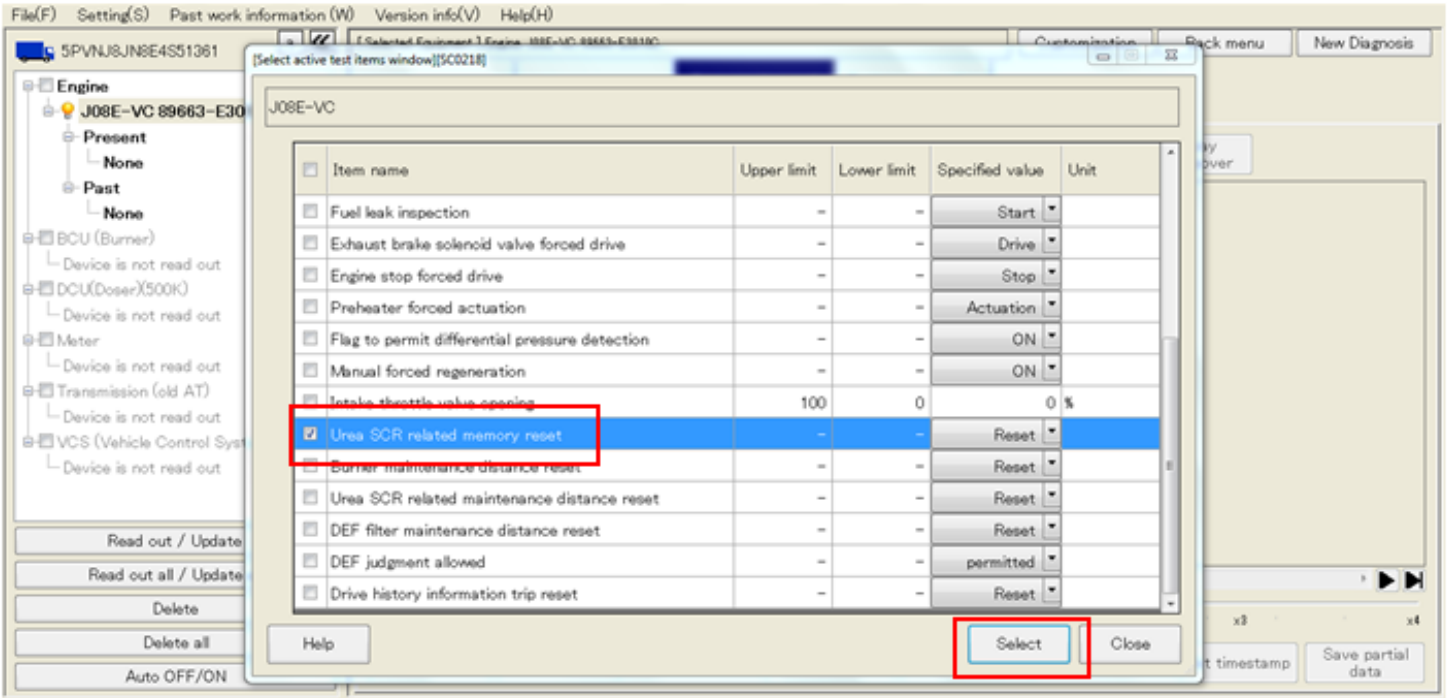


5. Select the “Active test setting” tab.

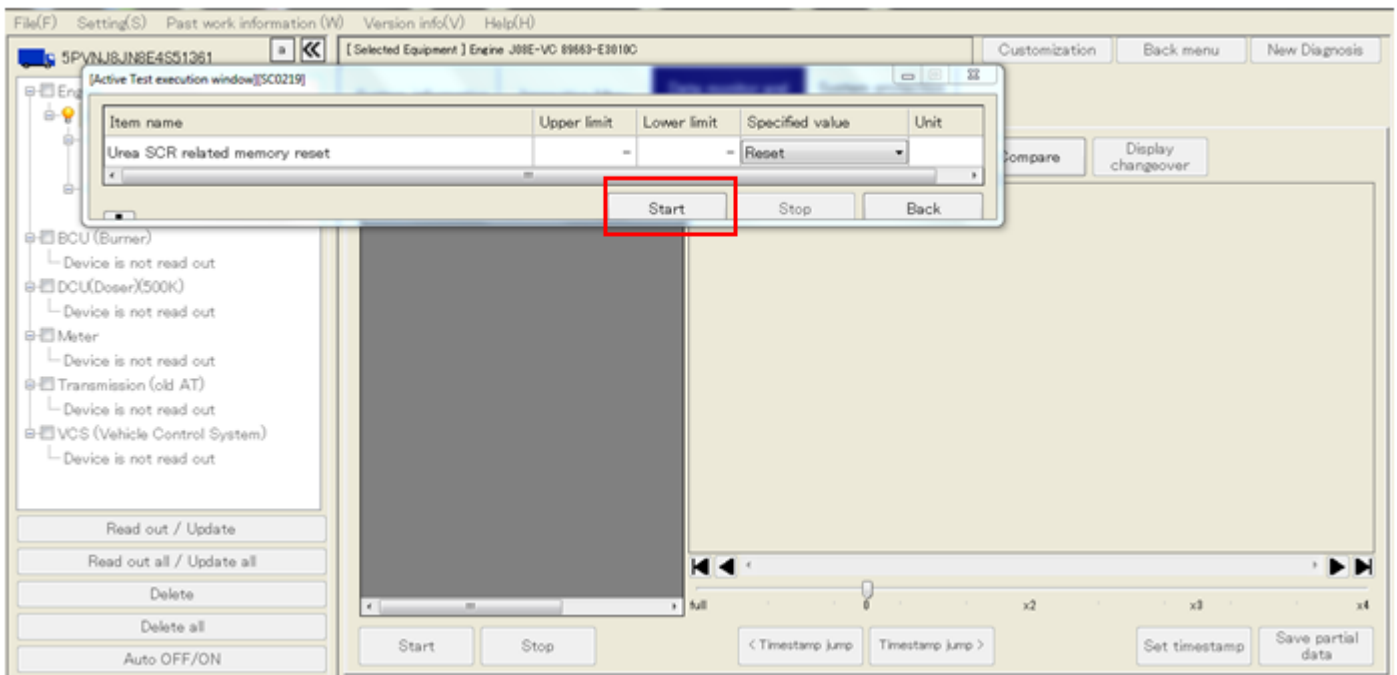


TECH TIP

6. Check the box for “Urea SCR related memory reset” on the active test items window and “select”.



7. Select the “Start” box in the test execution window. Once completed, the “Urea SCR related memory reset” text will be highlighted purple to confirm that it has been reset.



Tech Tip No:	TT-14-025
Group:	0-GENERAL
Issue Date:	8/26/2014

TECH TIP

8. Select “New Diagnosis” and let the DX software fully disconnect from the truck before disconnecting the interface.

