

## WE42 - Replacing Vehicle Identification Stickers (Workshop Campaign)

Model Line: **918 Spyder**

Model Year: **2015**

Concerns: **Vehicle identification stickers.**

Information: This is to inform you of a voluntary Workshop Campaign on the above-mentioned vehicles. **An incorrect engine number is shown on the vehicle identification stickers.**

Action Required: Replace the vehicle identification stickers on the vehicle with stickers showing the correct engine number.

Affected Vehicles: The VIN(s) can be checked by using PIWIS Vehicle Information link to verify if the campaign affects the vehicle. This campaign is scope specific to the VIN! Failure to verify in PIWIS may result in an improper repair.

**NOTE:** This campaign affects 4 vehicles in North America; VIN list is below. Please note the sticker status, also below, i.e., 3 of the VINs have already had stickers ordered by PCNA.

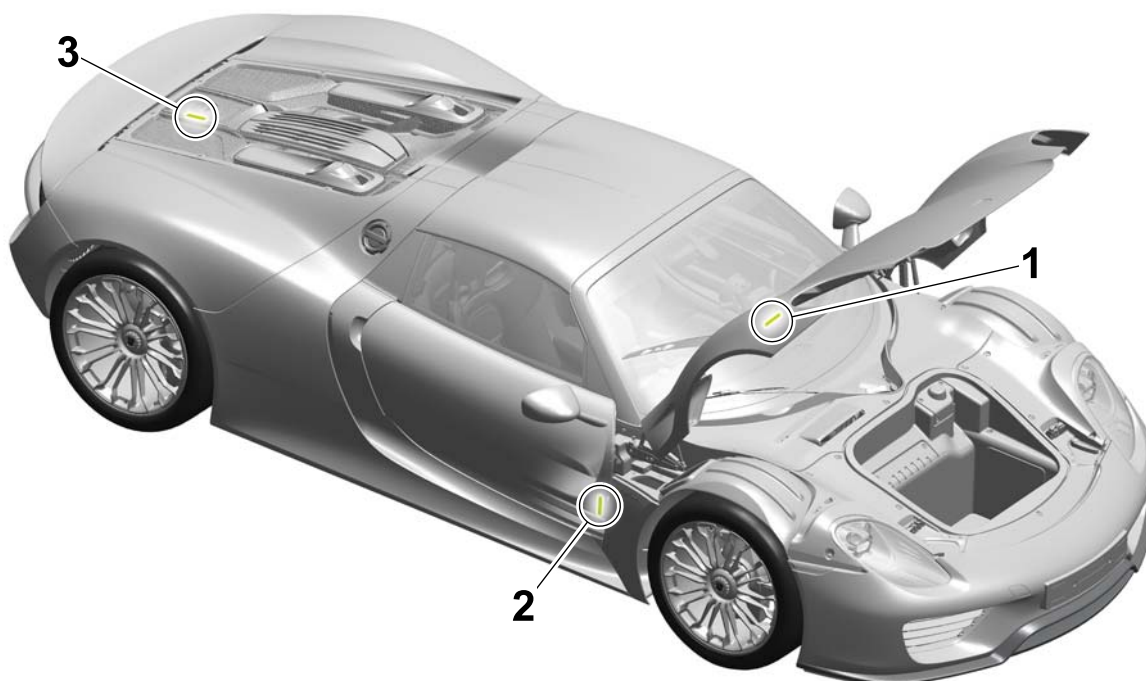
WPOCA2A10FS800128 - ordered by PCNA

**WPOCA2A12FS800051 - must be ordered by Dealer #1871**

WPOCA2A13FS800902 - ordered by PCNA

WPOCA2A16FS800134 - ordered by PCNA

Installation Position: The stickers are affixed at the following positions on the **right-hand side of the vehicle in direction of travel:**



*Installation position of vehicle identification stickers*

- 1 – Inside of front lid
- 2 – Bottom of A-pillar
- 3 – Inside of rear lid

Tools:

- Hot-air gun
- Clean, lint-free cloth
- Cleaning agent (e.g. isopropanol)

Work  
Procedure: See Attachment "A".

Claim  
Submission: See Attachment "B".

Attachment "A": **Work Procedure**

- 1 To order the stickers, send an e-mail with "918 Spyder Label" in the subject line and containing the following details to:  
Admin\_Campaignmanagement@porsche.de:
  - a. Vehicle VIN
  - b. Name, address, and phone number of the contact person at the relevant Porsche dealership.Porsche AG will immediately send the stickers via regular U.S. mail to the specified address.

- 2 **Replace stickers on the inside of the front lid, bottom of A-pillar and inside of rear lid with the correct vehicle identification stickers.**
  - a. Check that the vehicle identification number shown on the new stickers you have received corresponds to the vehicle identification number of the vehicle.

## NOTICE

### Effects of heat from hot-air gun

- Risk of damage to paintwork, interior and peripheral components
- ⇒ Heat up sticker carefully and only for as long as absolutely necessary



### Information

The procedure below for replacing the stickers is described in detail here on the front lid as an example.

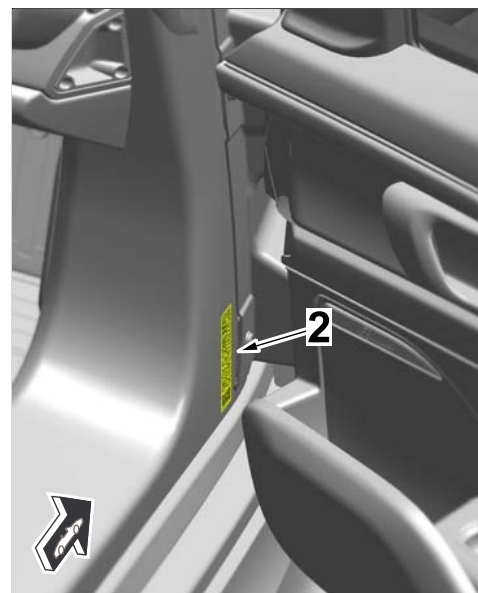
The steps must be carried out in the same way on the A-pillar and rear lid.

- 3 Replace sticker on front lid.
  - 3.1 Open the front lid.
  - 3.2 Carefully heat the sticker ⇒ *Sticker on front lid-1* affixed to the front lid using a hot-air gun.
  - 3.3 Remove the sticker carefully.  
Heat the sticker again several times using the hot-air gun if necessary.
  - 3.4 Clean off adhesive residue using a suitable cleaning agent (e.g. isopropanol) and then rub dry with a clean, lint-free cloth.
  - 3.5 Affix the new sticker at the same position and with the same text alignment as the original sticker.
  - 3.6 Close the front lid.



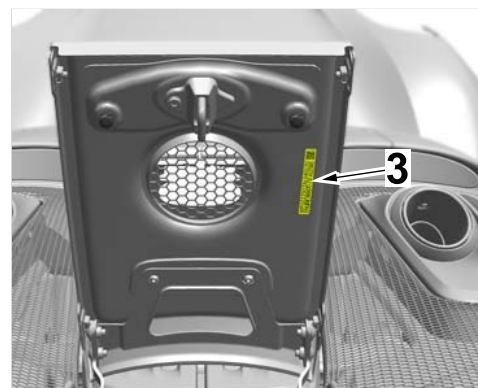
*Sticker on front lid*

- 4 Replace sticker at the bottom of the A-pillar.



*Sticker on bottom of A-pillar*

- 5 Replace sticker on the rear lid.
- 6 Enter the workshop campaign in the Warranty and Maintenance booklet.



*Sticker on rear lid*

Attachment "B": **Claim Submission** - Workshop Campaign WE42

Warranty claims should be submitted via WWS/PQIS.

Open campaigns may be checked by using either the PIWIS Vehicle Information system or through PQIS Job Creation.

Labor, parts, and sublet will be automatically inserted when Technician is selected in WWS/PQIS. If necessary, the required part numbers will need to be manually entered into warranty system by the dealer administrator.

#### Working time:

Replacing vehicle identification stickers

Labor time: **21 TU**

⇒ Damage code WE42 066 000 2

**Important Notice:** Technical Bulletins issued by Porsche Cars North America, Inc. are intended only for use by professional automotive technicians who have attended Porsche service training courses. They are written to inform those technicians of conditions that may occur on some Porsche vehicles, or to provide information that could assist in the proper servicing of a vehicle. Porsche special tools may be necessary in order to perform certain operations identified in these bulletins. Use of tools and procedures other than those Porsche recommends in these bulletins may be detrimental to the safe operation of your vehicle, and may endanger the people working on it. Properly trained Porsche technicians have the equipment, tools, safety instructions, and know-how to do the job properly and safely. If a particular condition is described, do not assume that the bulletin applies to your vehicle, or that your vehicle will have that condition. See your authorized Porsche Dealer for the latest information about whether a particular technical bulletin applies to your vehicle. Part numbers listed in these bulletins are for reference only. Always check with your authorized Porsche dealer to verify the current and correct part numbers. The work procedures updated electronically in the Porsche PIWIS diagnostic and testing device take precedence and, in the event of a discrepancy, the work procedures in the PIWIS Tester are the ones that must be followed.

© Porsche Cars North America, Inc.

Dealership	Service Manager	Shop Foreman	Service Technician
Distribution			
Routing	Asst. Manager	Warranty Admin.	Service Technician

Dr. Ing. h.c. F. Porsche AG is the owner of numerous trademarks, both registered and unregistered, including without limitation the Porsche Crest®, Porsche®, Boxster®, Carrera®, Cayenne®, Cayman®, Macan®, Panamera®, Speedster®, Spyder®, 918 Spyder®, Tiptronic®, VarioCam®, PCM®, PDK®, 911®, RS®, 4S®, FOUR, UNCOMPROMISED®, and the model numbers and the distinctive shapes of the Porsche automobiles such as, the federally registered 911 and Boxster automobiles. The third party trademarks contained herein are the properties of their respective owners. Porsche Cars North America, Inc. believes the specifications to be correct at the time of printing. Specifications, performance standards, standard equipment, options, and other elements shown are subject to change without notice. Some options may be unavailable when a car is built. Some vehicles may be shown with non-U.S. equipment. The information contained herein is for internal authorized Porsche dealer use only and cannot be copied or distributed. Porsche recommends seat belt usage and observance of traffic laws at all times.

Printed in the USA