

WE38 - Affixing Protective Film on Front Trim Panel (Workshop Campaign)

Vehicle Type: **918 Spyder**

Model Year: **2015**

Concerns: **Protective film for release handle**

Information: This is to inform you of a voluntary Workshop Campaign on the above-mentioned vehicles. **There is a possibility that the release handle for the front lid will hit against the front trim panel when actuated on the affected vehicles.**

This can result in superficial damage, e.g. scratches, and will be regarded by the customer as a visual defect.

Action Required: Affix protective film

Affected Vehicles: The VIN(s) can be checked by using PIWIS Vehicle Information link to verify if the campaign affects the vehicle. This campaign is scope specific to the VIN! Failure to verify in PIWIS may result in an improper repair. This campaign affects 5 vehicles in North America.

Parts Info: **NOTE: PARTS WILL NOT BE AUTOMATICALLY ALLOCATED TO YOUR DEALERSHIP. ALL PARTS MUST BE ORDERED VIA A PTEC/PAV.**

Part No.	Designation	Qty.
918.511.761.00	⇒ Protective film for release handle	1 ea.
Additional materials required:		
...	Cleaning rag	1 ea.*
	Isopropanol	
	Dish washing soap liquid	

* * The WWS Warranty system will automatically add into the "Miscellaneous item" section (sublet) of the claim after the claim has been submitted.

- Tools:
- Plastic spatula
 - Spray bottle
 - Slotted screwdriver

Work Procedure: See Attachment "A".

Claim Submission: See Attachment "B".



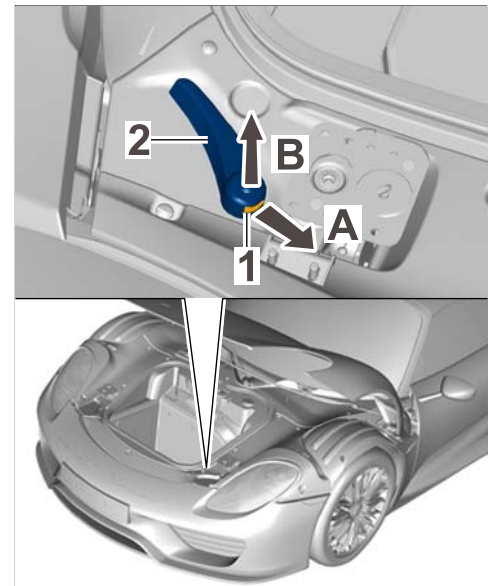
Information

General information on affixing the protective film

- Affix the protective film at an ambient temperature of at least 64° F/18° C (max. 77° F/25° C).
- The self-adhesive film will not stick at temperatures below 64° F (18° C). The minimum temperature limit of 64° F (18° C) must be observed.
- Park the vehicle in the workshop beforehand as required so that the vehicle is at the ambient temperature.
- If the ambient temperature is at the minimum temperature limit, the affixed protective film must be heated well using a hot-air gun immediately after sticking it on.
- Tests have shown that protective films are best applied "wet".
- A film of water prevents uncontrolled adhesion.
- The following fluid mixture makes an ideal soapy solution: 3 drops of commercially available dish washing liquid mixed in 1 quart of tap water.
- The protective film must be affixed immediately after pulling off the backing sheet.
- Do not touch the adhesive side of the protective film with your fingers after pulling off the backing sheet. There must not be any visible finger prints on the protective film.

Attachment "A": **Work Procedure**

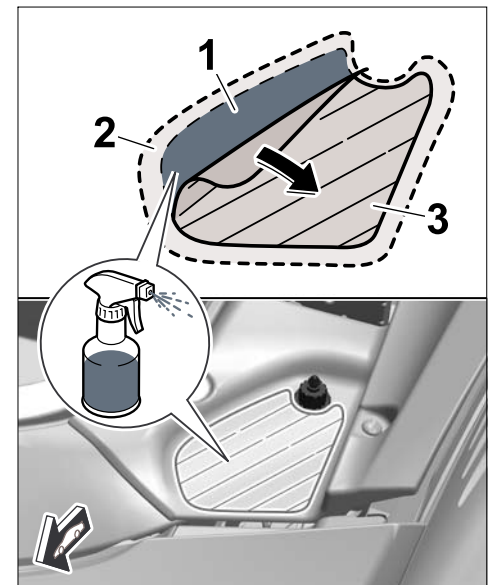
- 1 Remove release lever for front lid.
 - 1.1 Release locking clip ⇒ *Removing release lever for front lid -1-* using a slotted screwdriver and remove it ⇒ *Removing release lever for front lid -arrow A-*.
 - 1.2 Pull release lever ⇒ *Removing release lever for front lid -2-* up and off ⇒ *Removing release lever for front lid -arrow B-*.



Removing release lever for front lid

- 2 Clean the area of the cover on which you intend to stick the film using isopropanol to ensure that all traces of silicone, grease and oil are completely removed.

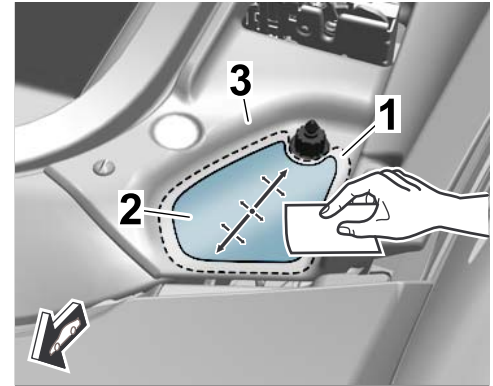
- 3 Place protective film ⇒ *Preparing protective film for adhesion -1-* with application film ⇒ *Preparing protective film for adhesion -2-* down on a level surface.
Pull backing sheet ⇒ *Preparing protective film for adhesion -3-* straight off at an angle of 180° ⇒ *Preparing protective film for adhesion -arrow-*.



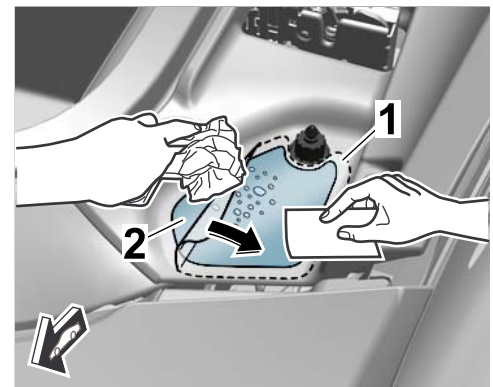
Preparing protective film for adhesion

- 4 Generously coat adhesive side of the protective film with the soapy solution.
- 5 Coat the entire surface of the trim panel to which you want to affix the film with the soapy solution.
- 6 Place protective film on the trim panel and align it on the cushion of water so that it is parallel to the shaft of the release handle.

- 7 Press the application film ⇒ *Installing protective film using wet adhesion procedure -1-* on in overlapping strokes using a plastic spatula (see illustration) so that there is no water left between the protective film ⇒ *Installing protective film using wet adhesion procedure -2-* and trim panel ⇒ *Installing protective film using wet adhesion procedure -3-*.
- 8 Dry off the entire surface using absorbent cloths.
- 9 Press on the application film again using strong, overlapping strokes. (The edge of the plastic spatula must bend slightly while doing this.)
- 10 Carefully pull the application film ⇒ *Pulling off application film -1-* straight off at an angle of 180° ⇒ *Pulling off application film -arrow-* and dry off the protective film ⇒ *Pulling off application film -2-* using an absorbent cloth.
- 11 Check the affixed protective film ⇒ *Pulling off application film -1-* for bubbles and creases. Press the air or water out of any bubbles you find using the plastic spatula.
- 12 Position release lever for front lid and press in the locking clip.
- 13 Enter the workshop campaign in the Warranty and Maintenance booklet.



Installing protective film using wet adhesion procedure



Pulling off application film

Attachment "B": **Claim Submission** - Workshop Campaign WE38
 Warranty claims should be submitted via WWS/POIS.
 Open campaigns may be checked by using either the PIWIS Vehicle Information system or through POIS Job Creation.
 Labor, parts, and sublet will be automatically inserted when Technician is selected in WWS/POIS. If necessary, the required part numbers will need to be manually entered into warranty system by the dealer administrator.

Working time:

Affixing protective film on front trim panel
 Includes: Removing and installing release handle

Labor time: **15 TU**

Parts required:

918.511.761.00 Protective film for release handle 1 ea.

WE380000001	Expendable items	1 ea.* (for warranty invoicing only)
* The WWS Warranty system will automatically add into the "Miscellaneous item" section (sublet) of the claim after the claim has been submitted.		
⇒ Damage code WE38 066 000 1		

Important Notice: Technical Bulletins issued by Porsche Cars North America, Inc. are intended only for use by professional automotive technicians who have attended Porsche service training courses. They are written to inform those technicians of conditions that may occur on some Porsche vehicles, or to provide information that could assist in the proper servicing of a vehicle. Porsche special tools may be necessary in order to perform certain operations identified in these bulletins. Use of tools and procedures other than those Porsche recommends in these bulletins may be detrimental to the safe operation of your vehicle, and may endanger the people working on it. Properly trained Porsche technicians have the equipment, tools, safety instructions, and know-how to do the job properly and safely. If a particular condition is described, do not assume that the bulletin applies to your vehicle, or that your vehicle will have that condition. See your authorized Porsche Dealer for the latest information about whether a particular technical bulletin applies to your vehicle. Part numbers listed in these bulletins are for reference only. Always check with your authorized Porsche dealer to verify the current and correct part numbers. The work procedures updated electronically in the Porsche PIWIS diagnostic and testing device take precedence and, in the event of a discrepancy, the work procedures in the PIWIS Tester are the ones that must be followed.

© Porsche Cars North America, Inc.

Dealership	Service Manager _____	Shop Foreman _____	Service Technician _____
Distribution	Asst. Manager _____	Warranty Admin. _____	Service Technician _____
Routing			

Dr. Ing. h.c. F. Porsche AG is the owner of numerous trademarks, both registered and unregistered, including without limitation the Porsche Crest®, Porsche®, Boxster®, Carrera®, Cayenne®, Cayman®, Macan®, Panamera®, Speedster®, Spyder®, 918 Spyder®, Tiptronic®, VarioCam®, PCM®, PDK®, 911®, RS®, 4S®, FOUR, UNCOMPROMISED®, and the model numbers and the distinctive shapes of the Porsche automobiles such as, the federally registered 911 and Boxster automobiles. The third party trademarks contained herein are the properties of their respective owners. Porsche Cars North America, Inc. believes the specifications to be correct at the time of printing. Specifications, performance standards, standard equipment, options, and other elements shown are subject to change without notice. Some options may be unavailable when a car is built. Some vehicles may be shown with non-U.S. equipment. The information contained herein is for internal authorized Porsche dealer use only and cannot be copied or distributed. Porsche recommends seat belt usage and observance of traffic laws at all times.

Printed in the USA