

WE46 - Checking Roof Console and Replacing it if Necessary (Workshop Campaign)

Important: **CRITICAL WARNING** - THIS CAMPAIGN INCLUDES STEPS WHERE SEVERAL CONTROL UNITS IN THE VEHICLE WILL BE PROGRAMMED WITH THE PIWIS TESTER. IT IS CRITICAL THAT THE VEHICLE VOLTAGE BE BETWEEN 13.5 VOLTS AND 14.5 VOLTS DURING THIS PROGRAMMING. OTHERWISE, THE PROGRAMMING COULD FAIL RESULTING IN DAMAGED CONTROL UNITS. CONTROL UNITS DAMAGED BY INADEQUATE VOLTAGE WILL NOT BE COVERED UNDER WARRANTY. THE TECHNICIAN MUST VERIFY THE ACTUAL VEHICLE VOLTAGE IN THE INSTRUMENT CLUSTER OR IN THE PIWIS TESTER BEFORE STARTING THE CAMPAIGN AND ALSO DOCUMENT THE ACTUAL VOLTAGE ON THE REPAIR ORDER. IT IS ALSO ADVISABLE TO MONITOR THE VEHICLE VOLTAGE DURING THE PROGRAMMING VIA THE INSTRUMENT CLUSTER. PLEASE REFER TO EQUIPMENT INFORMATION EQ-1105 FOR A LIST OF SUITABLE BATTERY CHARGERS/POWER SUPPLIES WHICH SHOULD BE USED TO MAINTAIN VEHICLE VOLTAGE.

Model Year: **As of 2014 up to 2015**

Model Line: **Panamera**

Equipment: Alarm system with interior surveillance (I-no. **534**)

Concerns: **Sensor for interior surveillance in the roof console**

Information: This is to inform you of a voluntary Workshop Campaign on the above-mentioned vehicles. **A sensor for the interior surveillance system in the roof console that does not meet the required specifications may have been installed on the affected vehicles.**

This can cause increased triggering sensitivity under certain conditions, resulting in the triggering of implausible alarms.

Action Required: Check hardware version of the roof console and replace roof console if necessary.

Affected Vehicles: The VIN(s) can be checked by using PIWIS Vehicle Information link to verify if the campaign affects the vehicle. This campaign is scope specific to the VIN! Failure to verify in PIWIS may result in an improper repair. This campaign affects 3,237 vehicles in North America.

Checking hardware version of roof console

- Tools:
- **9818 - PIWIS Tester II** with PIWIS Tester software version **14.300** (or higher) installed.
 - **Battery Charger/Power Supply** - Suitable for AGM Type batteries, recommended current rating of 70A fixed voltage 13.5V to 14.5V. Refer to Equipment Information EQ-1105.

Work Procedure: See Attachment "A".

Claim Submission: See Attachment "B".

Attachment "A": **Work Procedure**

NOTE: VEHICLE VOLTAGE MUST REMAIN BETWEEN 13.5 AND 14.5 VOLTS DURING THE ENTIRE WORK PROCEDURE.



Information

The procedure described here is based on the PIWIS Tester II test software version **14.300**.

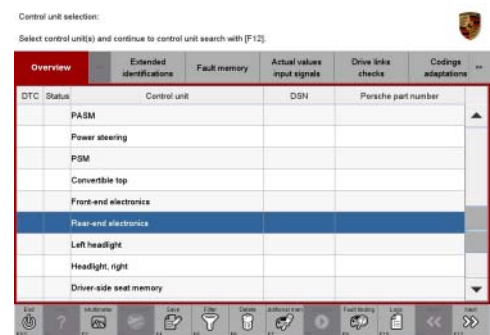
The PIWIS Tester instructions take precedence and in the event of a discrepancy, these are the instructions that must be followed.

A discrepancy may arise with later software versions for example.

- 1 Connect a battery charger or power supply, suitable for AGM type batteries, recommended current rating of 70A fixed voltage 13.5V to 14.5V to the jump-start terminals in the engine compartment.
- 2 Switch on the ignition using the **original driver's key**.
To do this, replace the control panel in the ignition lock with the original driver's key if necessary.
- 3 **9818 - PIWIS Tester II** with software version **14.300** (or higher) installed must be connected to the vehicle communication module (VCI) via the **USB cable**. Then, connect the communication module to the vehicle and switch on the PIWIS Tester.
- 4 On the PIWIS Tester start screen, call up the ⇒ **'Diagnostics'** menu and select the relevant vehicle type.

The diagnostic application is then started and the control unit selection screen is populated.

- 5 In the control unit selection screen (⇒ **'Overview'** menu), select the ⇒ **'Rear-end electronics'** control unit and press •>>" to confirm your selection ⇒ *Control unit selection - Rear-end electronics*.
- 6 When the question "Create Vehicle Analysis Log (VAL)?" appears, either press •F12" to create a VAL or press •F11" if you do not want to create a VAL.
- 7 Press •>>" to acknowledge the message informing you that campaigns for the vehicle are stored in the PIWIS information system.



Control unit selection - Rear-end electronics

8 Once the 'Rear-end electronics' control unit has been found and is displayed in the overview, select the ⇒ **'Extended identifications'** menu.

9 Read out the value entered for "**Roof console hardware version**" ⇒ *Roof console hardware version -arrow-*:

- The **hardware version** of the roof console is **046** (or higher): ⇒ **End of action required, continue with Step 10.**
- If a roof console with the **hardware versions 044 or 045** is installed, the **roof console must be replaced.** To do this, first **complete Steps 10 to 12** and **then replace the roof console** ⇒ *Technical Information 'WE4600 Replacing roof console'.*

Control unit	Identification	Value	Unit	Changed
Roof console	Roof console software version	1900		
	Roof console hardware version	046		
	Roof console serial number	X0001MG1000 HQ		
Automatically dimming interior mirror	Roof console, Porsche part number	7FP96951GS		
	Interior mirror software version	1010		
	Interior mirror hardware version	C10		
	Interior mirror serial number	0000000020426		

Roof console hardware version

10 Select the ⇒ **'Overview'** menu on the PIWIS Tester and press •<<" to return to the control unit selection screen.

11 Switch off ignition.

12 Disconnect the PIWIS Tester from the vehicle.

13 Switch off and disconnect the battery charger.

14 On vehicles with Porsche Entry & Drive, replace the original driver's key in the ignition lock with the control panel again.

15 Enter the workshop campaign in the Warranty and Maintenance booklet.

Attachment "B": **Claim Submission** - Workshop Campaign WE46
 Warranty claims should be submitted via WWS/PQIS.
 Open campaigns may be checked by using either the PIWIS Vehicle Information system or through PQIS Job Creation.
 Labor, parts, and sublet will be automatically inserted when Technician is selected in WWS/PQIS. If necessary, the required part numbers will need to be manually entered into warranty system by the dealer administrator.

Scope 1: Checking hardware version of roof console - **roof console does not need to be replaced.**

Working time:

Checking hardware version of roof console

Labor time: **30 TU**Includes: Connecting and disconnecting battery charger
Connecting and disconnecting PIWIS Tester⇒ **Damage code WE46 066 000 1****Replacing roof console**

Parts Info: **NOTE:** PARTS FOR THIS CAMPAIGN WILL BE AUTOMATICALLY ALLOCATED FOR UP TO 35% OF THE VEHICLES THAT ARE SERVICED AT YOUR DEALERSHIP. ONCE YOUR DEALERSHIP IS OUT OF STOCK AND REQUIRES ADDITIONAL PARTS, YOU SHOULD SUBMIT A PTEC/PAV.

**Information**

The roof console to be used for the respective vehicle depends on the following equipment variants:

- Garage door opener
- Navigation system/hands-free equipment
- Parking assistant
- Courtesy lights
- Roof insert
- Deactivation option for passenger's airbag

Given the wide range of equipment-dependent variants of the roof console, equipment-specific scopes have been defined for replacing the roof console. Scope 1 – "Checking roof console" and **exactly one scope for "Replacing roof console" are assigned uniquely to each vehicle.**

⇒ To find out which scope is assigned to the vehicle for **replacing the roof console**, see PIWIS Vehicle Information.

The **part number** of the **roof console required** for the respective vehicle is specified in the **assigned scope for "Replacing roof console"**.

A **list of the scopes for "Replacing roof console"** with a **link** to the respective scope can be found under ⇒ *Technical Information 'WE4600 List of campaign scopes for replacing roof console'*.

- Tools:
- **9818 - PIWIS Tester II** with PIWIS Tester software version **14.300** (or higher) installed.
 - **Battery Charger/Power Supply** - Suitable for AGM Type batteries, recommended current rating of 70A fixed voltage 13.5V to 14.5V. Refer to Equipment Information EQ-1105.
 - A suitable plastic assembly wedge

Procedure: **NOTE:** VEHICLE VOLTAGE MUST REMAIN BETWEEN 13.5 AND 14.5 VOLTS DURING THE ENTIRE WORK PROCEDURE.

NOTICE**Voltage peaks**

- Risk of damage to load or to the control unit
- ⇒ Switch off ignition and remove remote control before disconnecting or removing load.

- 1 Remove front roof trim panel (roof console) and install **new roof console**. ⇒ *Workshop Manual '708319 Removing and installing front roof trim panel'*.

NOTICE**Coding will be aborted in the event of low voltage.**

- Increased current draw during diagnosis can cause a drop in voltage, which can result in one or more fault entries and the abnormal termination of the coding process.
- ⇒ Before commencing work, connect a suitable battery charger or power supply, suitable for AGM type batteries, recommended current rating of 70A fixed voltage 13.5V to 14.5V to the jump-start terminals in the engine compartment.

NOTICE**Coding will be aborted if the WLAN connection is unstable.**

- An unstable WLAN connection can interrupt communication between PIWIS Tester II and the vehicle communication module (VCI). As a result, coding may be aborted.
- ⇒ During control unit coding, always connect PIWIS Tester II to the vehicle communication module (VCI) via the USB cable.

NOTICE**Control unit coding will be aborted if the driver's key is not recognized**

- If the driver's key is not recognised in vehicles with Porsche Entry & Drive, coding cannot be started or will be interrupted.
- ⇒ Switch on the ignition using the original driver's key. To do this, replace the control panel in the ignition lock with the original driver's key if necessary.

**Information**

To prevent malfunctions in the vehicle system due to the wide range of equipment variants, the **new roof console** must be **taught** following installation in the vehicle.

To do this, first **re-code** the **rear-end electronics** control unit automatically and then **teach** the **roof console** using the PIWIS Tester.

- 2 Switch on the ignition using the **original driver's key**.
- 3 **9818 - PIWIS Tester II** with software version **14.300** (or higher) installed must be connected to the vehicle communication module (VCI) via the **USB cable**. Then, re-connect the communication module to the vehicle.
- 4 Re-code rear-end electronics control unit automatically.

4.1 In the control unit selection screen (⇒ **'Overview'** menu), select the ⇒ **'Rear-end electronics'** control unit and press **•>>“** to confirm your selection ⇒ *Control unit selection - Rear-end electronics*.

4.2 Once the 'Rear-end electronics' control unit has been found and is displayed in the overview, select the ⇒ **'Codings/adaptations'** menu.

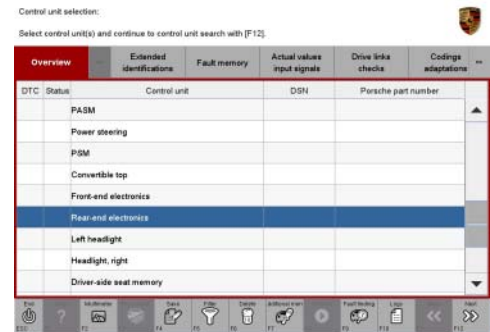
4.3 Select the ⇒ **'Automatic coding'** function and press **•>>“** to start coding ⇒ *Automatic coding*.

4.4 When coding is complete, the message “Coding has been completed successfully” is displayed and a tick appears in the 'Status' box ⇒ *Coding successful*.

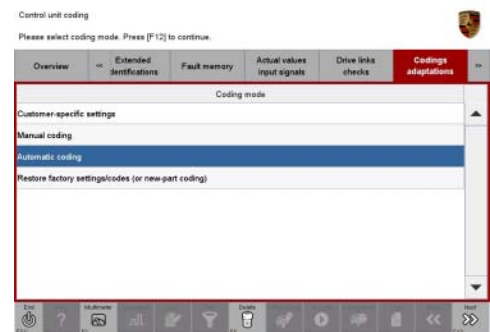
If coding is not completed successfully (error message “Coding was not completed successfully”), coding must be **repeated**.

4.5 Once coding has been completed successfully, press **•>>“** to return to the start page of the ⇒ **'Codings/adaptations'** menu.

- 5 Teach the roof console to suit the vehicle.
 - 5.1 Select the ⇒ **'Drive links/checks'** menu.



Control unit selection - Rear-end electronics

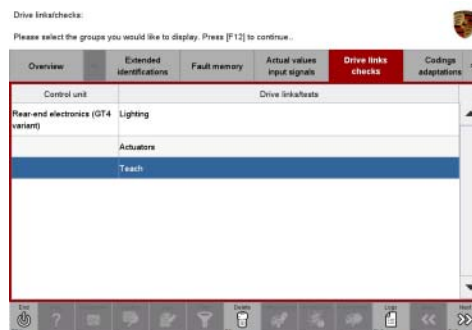


Automatic coding



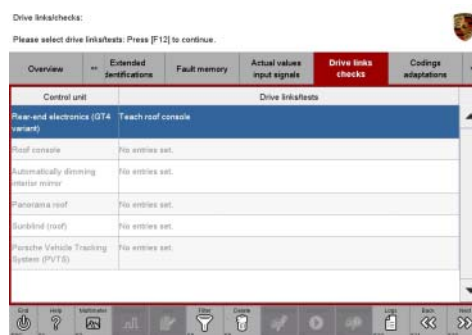
Coding successful

5.2 Select the ⇒ **'Teach'** function and press •>>" to confirm your selection ⇒ *'Teach' function.*



'Teach' function

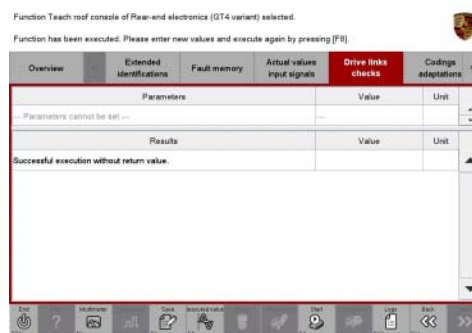
5.3 Select the ⇒ **'Teach roof console'** function and press •>>" to confirm your selection ⇒ *Teaching roof console.*



Teaching roof console

5.4 Start the ⇒ **'Teach roof console'** function by pressing •F8" .

Once the roof console has been taught, the message **"Successful execution without return value"** appears in the PIWIS Tester display ⇒ *Roof console taught successfully.*



Roof console taught successfully

If the roof console **cannot** be taught successfully, the process must be **repeated**.

5.5 Once the roof console has been taught successfully, press •<<" to return to the start page of the ⇒ **"Drive links/checks"** menu.

5.6 Select the ⇒ **'Overview'** menu and press •<<" to return to the control unit selection screen.

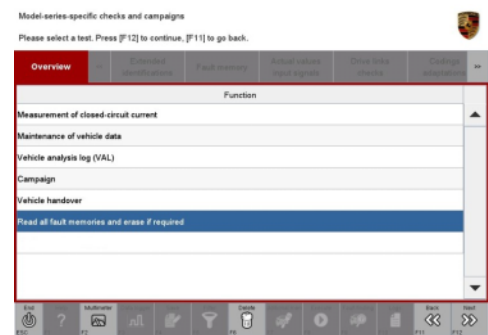
6 Read out and erase fault memories.

- 6.1 In the control unit selection screen (⇒ **'Overview'** menu), press **•F7** to call up the ⇒ **'Additional menu'** (⇒ *Control unit selection*).
- 6.2 Select the function ⇒ **'Read all fault memories and erase if required'** and press **•>>** to confirm ⇒ *Erasing fault memories*.



Control unit selection

- The fault memories of the control units are read out.
- 6.3 Once you have read out the fault memories, delete the fault memory entries by pressing **•F8**.
- 6.4 Confirm the query as to whether you really want to delete all fault memory entries and press **•>>** ("Yes") to confirm. The faults stored in the fault memories of the various control units are deleted.



Erasing fault memories



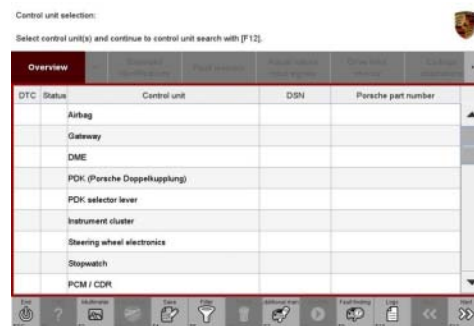
Information

If the fault memories of individual control units (e.g. fault memories of the control units for front-end electronics, rear-end electronics, etc.) cannot be erased, proceed as follows:

- Switch off ignition.
- Disconnect the PIWIS Tester diagnostic connector from the diagnostic socket.
- Lock the vehicle using the driver's key.
- Wait approx. 1 minute before unlocking the vehicle again.
- Plug the PIWIS Tester diagnostic connector into the diagnostic socket again and restore communication with the vehicle.
- Read out the fault memories of these control units again and erase the fault memories separately.

If control units are found to have faults, which cannot be erased and are not caused by replacing the roof console, these faults must be found and corrected. This work **cannot** be invoiced under the workshop campaign number.

- 6.5 Once you have erased the fault memories, select the ⇒ **'Overview'** menu to return to the control unit selection screen ⇒ *Control unit selection*.
- 7 Switch off ignition.
- 8 Disconnect the PIWIS Tester from the vehicle.
- 9 Switch off and disconnect the battery charger.
- 10 On vehicles with Porsche Entry & Drive, replace the original driver's key in the ignition lock with the control panel again.
- 11 Enter the workshop campaign in the Warranty and Maintenance booklet.



Control unit selection

Attachment "B": **Claim Submission** - WE46

Labor will be inserted automatically when the technician is selected in WWS. If necessary, the required part numbers will need to be manually entered into WWS by the dealer administrator.

List of campaign scope for replacing roof console

Scopes: Click on the relevant **link** for the scope assigned to the vehicle (see PIWIS Vehicle Information) to go directly to the corresponding **campaign scope** for **replacing the roof console**.

- Scope 2:** ⇒ *Technical Information 'WE4600 Scope 2 - Replacing roof console'*
- Scope 3:** ⇒ *Technical Information 'WE4600 Scope 3 - Replacing roof console'*
- Scope 4:** ⇒ *Technical Information 'WE4600 Scope 4 - Replacing roof console'*
- Scope 5:** ⇒ *Technical Information 'WE4600 Scope 5 - Replacing roof console'*
- Scope 6:** ⇒ *Technical Information 'WE4600 Scope 6 - Replacing roof console'*
- Scope 7:** ⇒ *Technical Information 'WE4600 Scope 7 - Replacing roof console'*
- Scope 8:** ⇒ *Technical Information 'WE4600 Scope 8 - Replacing roof console'*
- Scope 9:** ⇒ *Technical Information 'WE4600 Scope 9 - Replacing roof console'*
- Scope 10:** ⇒ *Technical Information 'WE4600 Scope 10 - Replacing roof console'*
- Scope 11 - 54:** **not valid** for this **vehicle type**.
- Scope 55:** ⇒ *Technical Information 'WE4600 Scope 55 - Replacing roof console'*
- Scope 56:** ⇒ *Technical Information 'WE4600 Scope 56 - Replacing roof console'*
- Scope 57:** ⇒ *Technical Information 'WE4600 Scope 57 - Replacing roof console'*

Scope 2 - Replacing roof console

Invoicing: Checking hardware version of roof console and **replacing** roof console.

Vehicles with the following I-nos.: *

- Garage door opener: **not installed**
- Navigation: **Standard** (without I-no.)

- Parking assistant: **633** or **636** or **638**
- Courtesy lights: **Standard** (without I-no.)
- Roof insert: **650**
- Passenger's airbag: **560** or **899**

Working time:

Checking hardware version of roof console and replacing roof console

Labor time: **74 TU**

Includes:

- Connecting and disconnecting battery charger
- Connecting and disconnecting PIWIS Tester (2x)
- Removing and installing roof console
- Re-coding rear-end electronics control unit automatically
- Teaching roof console
- Reading out and erasing fault memories

Parts required:

000.043.989.13	Roof console	1 ea.
----------------	--------------	-------

⇒ **Damage code WE46 066 000 2*** For I-no. designations, see ⇒ *Technical Information 'WE4600 Designations of the I-nos.'***Scope 3 - Replacing roof console**Invoicing: Checking hardware version of roof console and **replacing** roof console.

Vehicles with the following I-nos.: *

- Garage door opener: **607** or **608**
- Navigation: **Standard** (without I-no.)
- Parking assistant: **633** or **636** or **638**
- Courtesy lights: **Standard** (without I-no.)
- Roof insert: **650**
- Passenger's airbag: **560** or **899**

Working time:

Checking hardware version of roof console and replacing roof console

Labor time: **74 TU**

Includes:

- Connecting and disconnecting battery charger
- Connecting and disconnecting PIWIS Tester (2x)
- Removing and installing roof console
- Re-coding rear-end electronics control unit automatically
- Teaching roof console
- Reading out and erasing fault memories

Parts required:		
000.043.989.16	Roof console	1 ea.
⇒ Damage code WE46 066 000 2		

* For I-no. designations, see ⇒ *Technical Information 'WE4600 Designations of the I-nos.'*

Scope 4 - Replacing roof console

Invoicing: Checking hardware version of roof console and **replacing** roof console.

Vehicles with the following I-nos.: *

- Garage door opener: **not installed**
- Navigation: **193**
- Parking assistant: **633** or **636** or **638**
- Courtesy lights: **Standard** (without I-no.)
- Roof insert: **652**
- Passenger's airbag: **560** or **899**

Working time:		
Checking hardware version of roof console and replacing roof console		Labor time: 74 TU
Includes:	Connecting and disconnecting battery charger Connecting and disconnecting PIWIS Tester (2x) Removing and installing roof console Re-coding rear-end electronics control unit automatically Teaching roof console Reading out and erasing fault memories	
Parts required:		
000.043.989.19	Roof console	1 ea.
⇒ Damage code WE46 066 000 2		

* For I-no. designations, see ⇒ *Technical Information 'WE4600 Designations of the I-nos.'*

Scope 5 - Replacing roof console

Invoicing: Checking hardware version of roof console and **replacing** roof console.

Vehicles with the following I-nos.: *

- Garage door opener: **not installed**
- Navigation: **193**

- Parking assistant: **633** or **636** or **638**
- Courtesy lights: **Standard** (without I-no.)
- Roof insert: **650**
- Passenger's airbag: **560** or **899**

Working time:

Checking hardware version of roof console and replacing roof console

Labor time: **74 TU**

Includes:

- Connecting and disconnecting battery charger
- Connecting and disconnecting PIWIS Tester (2x)
- Removing and installing roof console
- Re-coding rear-end electronics control unit automatically
- Teaching roof console
- Reading out and erasing fault memories

Parts required:

000.043.989.20	Roof console	1 ea.
----------------	--------------	-------

⇒ **Damage code WE46 066 000 2*** For I-no. designations, see ⇒ *Technical Information 'WE4600 Designations of the I-nos.'***Scope 6 - Replacing roof console**Invoicing: Checking hardware version of roof console and **replacing** roof console.

Vehicles with the following I-nos.: *

- Garage door opener: **not installed**
- Navigation: **Standard** (without I-no.)
- Parking assistant: **not installed**
- Courtesy lights: **630**
- Roof insert: **650**
- Passenger's airbag: **560** or **899**

Working time:

Checking hardware version of roof console and replacing roof console

Labor time: **74 TU**

Includes:

- Connecting and disconnecting battery charger
- Connecting and disconnecting PIWIS Tester (2x)
- Removing and installing roof console
- Re-coding rear-end electronics control unit automatically
- Teaching roof console
- Reading out and erasing fault memories

Parts required:		
000.043.989.21	Roof console	1 ea.
⇒ Damage code WE46 066 000 2		

* For I-no. designations, see ⇒ *Technical Information 'WE4600 Designations of the I-nos.'*

Scope 7 - Replacing roof console

Invoicing: Checking hardware version of roof console and **replacing** roof console.

Vehicles with the following I-nos.: *

- Garage door opener: **not installed**
- Navigation: **Standard** (without I-no.)
- Parking assistant: **633** or **636** or **638**
- Courtesy lights: **630**
- Roof insert: **652**
- Passenger's airbag: **560** or **899**

Working time:		
Checking hardware version of roof console and replacing roof console		Labor time: 74 TU
Includes:	Connecting and disconnecting battery charger Connecting and disconnecting PIWIS Tester (2x) Removing and installing roof console Re-coding rear-end electronics control unit automatically Teaching roof console Reading out and erasing fault memories	
Parts required:		
000.043.989.22	Roof console	1 ea.
Invoicing: ⇒ Damage code WE46 066 000 2		

* For I-no. designations, see ⇒ *Technical Information 'WE4600 Designations of the I-nos.'*

Scope 8 - Replacing roof console

Invoicing: Checking hardware version of roof console and **replacing** roof console.

Vehicles with the following I-nos.: *

- Garage door opener: **not installed**
- Navigation: **Standard** (without I-no.)

- Parking assistant: **633** or **636** or **638**
- Courtesy lights: **630**
- Roof insert: **650**
- Passenger's airbag: **560** or **899**

Working time:

Checking hardware version of roof console and replacing roof console

Labor time: **74 TU**

Includes: Connecting and disconnecting battery charger
 Connecting and disconnecting PIWIS Tester (2x)
 Removing and installing roof console
 Re-coding rear-end electronics control unit automatically
 Teaching roof console
 Reading out and erasing fault memories

Parts required:

000.043.989.24 Roof console 1 ea.

⇒ **Damage code WE46 066 000 2*** For I-no. designations, see ⇒ *Technical Information 'WE4600 Designations of the I-nos.'***Scope 9 - Replacing roof console**Invoicing: Checking hardware version of roof console and **replacing** roof console.

Vehicles with the following I-nos.: *

- Garage door opener: **607** or **608**
- Navigation: **Standard** (without I-no.)
- Parking assistant: **633** or **636** or **638**
- Courtesy lights: **630**
- Roof insert: **652**
- Passenger's airbag: **560** or **899**

Working time:

Checking hardware version of roof console and replacing roof console

Labor time: **74 TU**

Includes: Connecting and disconnecting battery charger
 Connecting and disconnecting PIWIS Tester (2x)
 Removing and installing roof console
 Re-coding rear-end electronics control unit automatically
 Teaching roof console
 Reading out and erasing fault memories

Parts required:

000.043.989.25 Roof console 1 ea.

⇒ **Damage code WE46 066 000 2**

* For I-no. designations, see ⇒ *Technical Information 'WE4600 Designations of the I-nos.'*

Scope 10 - Replacing roof console

Invoicing: Checking hardware version of roof console and **replacing** roof console.

Vehicles with the following I-nos.: *

- Garage door opener: **607** or **608**
- Navigation: **Standard** (without I-no.)
- Parking assistant: **633** or **636** or **638**
- Courtesy lights: **630**
- Roof insert: **650**
- Passenger's airbag: **560** or **899**

Working time:

Checking hardware version of roof console and replacing roof console

Labor time: **74 TU**

Includes: Connecting and disconnecting battery charger
 Connecting and disconnecting PIWIS Tester (2x)
 Removing and installing roof console
 Re-coding rear-end electronics control unit automatically
 Teaching roof console
 Reading out and erasing fault memories

Parts required:

000.043.989.27 Roof console 1 ea.

⇒ **Damage code WE46 066 000 2**

* For I-no. designations, see ⇒ *Technical Information 'WE4600 Designations of the I-nos.'*

Scope 11 to 54 - Replacing roof console

Information: These scopes are **not valid** for this **vehicle type**.

Scope 55 - Replacing roof console

Invoicing: Checking hardware version of roof console and **replacing** roof console.

Vehicles with the following I-nos.: *

- Garage door opener: **not installed**
- Navigation: **Standard** (without I-no.)
- Parking assistant: **633** or **636** or **638**
- Courtesy lights: **Standard** (without I-no.)
- Roof insert: **652**
- Passenger's airbag: **560** or **899**

Working time:

Checking hardware version of roof console and replacing roof console

Labor time: **74 TU**

Includes: Connecting and disconnecting battery charger
 Connecting and disconnecting PIWIS Tester (2x)
 Removing and installing roof console
 Re-coding rear-end electronics control unit automatically
 Teaching roof console
 Reading out and erasing fault memories

Parts required:

000.043.989.11 Roof console 1 ea.

⇒ **Damage code WE46 066 000 2**

* For I-no. designations, see ⇒ *Technical Information 'WE4600 Designations of the I-nos.'*

Scope 56 - Replacing roof console

Invoicing: Checking hardware version of roof console and **replacing** roof console.

Vehicles with the following I-nos.: *

- Garage door opener: **not installed**
- Navigation: **193**
- Parking assistant: **633** or **636** or **638**
- Courtesy lights: **630**
- Roof insert: **650**
- Passenger's airbag: **560** or **899**

Working time:

Checking hardware version of roof console and replacing roof console

Labor time: **74 TU**

Includes: Connecting and disconnecting battery charger
 Connecting and disconnecting PIWIS Tester (2x)
 Removing and installing roof console
 Re-coding rear-end electronics control unit automatically
 Teaching roof console
 Reading out and erasing fault memories

Parts required:

7PP.868.404.NB Roof console 1 ea.

⇒ **Damage code WE46 066 000 2**

* For I-no. designations, see ⇒ *Technical Information 'WE4600 Designations of the I-nos.'*

Scope 57 - Replacing roof console

Invoicing: Checking hardware version of roof console and **replacing** roof console.

Vehicles with the following I-nos.: *

- Garage door opener: **607** or **608**
- Navigation: **Standard** (without I-no.)
- Parking assistant: **633** or **636** or **638**
- Courtesy lights: **Standard** (without I-no.)
- Roof insert: **652**
- Passenger's airbag: **560** or **899**

Working time:

Checking hardware version of roof console and replacing roof console

Labor time: **74 TU**

Includes: Connecting and disconnecting battery charger
 Connecting and disconnecting PIWIS Tester (2x)
 Removing and installing roof console
 Re-coding rear-end electronics control unit automatically
 Teaching roof console
 Reading out and erasing fault memories

Parts required:

000.043.989.14 Roof console 1 ea.

⇒ Damage code WE46 066 000

* For I-no. designations, see ⇒ *Technical Information 'WE4600 Designations of the I-nos.'*

Designations of the I-nos.

Legend:

Garage door opener:

- **607:** Garage door opener, 315 MHz
- **608:** Garage door opener, 433 MHz

Navigation:

- **193:** Navigation system preparation, Japan

Parking assistant:

- **633:** ParkAssist (front and rear) with Real Topview
- **636:** ParkAssist (front and rear)
- **638:** Reversing camera

Courtesy lights:

- **630:** Comfort courtesy lights

Roof insert:

- **652:** without roof insert
- **650:** Electric slide/tilt roof

Passenger's airbag:

- **560:** Advanced airbag (automatic deactivation of passenger's airbag if necessary)
- **899:** ISOFIX child-seat mounting for passenger seat (passenger's airbag can be deactivated)

Important Notice: Technical Bulletins issued by Porsche Cars North America, Inc. are intended only for use by professional automotive technicians who have attended Porsche service training courses. They are written to inform those technicians of conditions that may occur on some Porsche vehicles, or to provide information that could assist in the proper servicing of a vehicle. Porsche special tools may be necessary in order to perform certain operations identified in these bulletins. Use of tools and procedures other than those Porsche recommends in these bulletins may be detrimental to the safe operation of your vehicle, and may endanger the people working on it. Properly trained Porsche technicians have the equipment, tools, safety instructions, and know-how to do the job properly and safely. If a particular condition is described, do not assume that the bulletin applies to your vehicle, or that your vehicle will have that condition. See your authorized Porsche Dealer for the latest information about whether a particular technical bulletin applies to your vehicle. Part numbers listed in these bulletins are for reference only. Always check with your authorized Porsche dealer to verify the current and correct part numbers. The work procedures updated electronically in the Porsche PIWIS diagnostic and testing device take precedence and, in the event of a discrepancy, the work procedures in the PIWIS Tester are the ones that must be followed.

© Porsche Cars North America, Inc.

Dealership	Service Manager	Shop Foreman	Service Technician
Distribution			
Routing	Asst. Manager	Warranty Admin.	Service Technician

Dr. Ing. h.c. F. Porsche AG is the owner of numerous trademarks, both registered and unregistered, including without limitation the Porsche Crest®, Porsche®, Boxster®, Carrera®, Cayenne®, Cayman®, Macan®, Panamera®, Speedster®, Spyder®, 918 Spyder®, Tiptronic®, VarioCam®, PCM®, PDK®, 911®, RS®, 4S®, FOUR, UNCOMPROMISED®, and the model numbers and the distinctive shapes of the Porsche automobiles such as, the federally registered 911 and Boxster automobiles. The third party trademarks contained herein are the properties of their respective owners. Porsche Cars North America, Inc. believes the specifications to be correct at the time of printing. Specifications, performance standards, standard equipment, options, and other elements shown are subject to change without notice. Some options may be unavailable when a car is built. Some vehicles may be shown with non-U.S. equipment. The information contained herein is for internal authorized Porsche dealer use only and cannot be copied or distributed. Porsche recommends seat belt usage and observance of traffic laws at all times.

Printed in the USA