

WE46 - Checking Roof Console and Replacing it if Necessary (Workshop Campaign)

Revisions: REVISION 1: October 7, 2014
 This revision amends WE46 (Cayenne version) to include p/n 00004398916 on the list of parts to be auto allocated to dealerships servicing the affected vehicles.
NOTE: THESE PARTS WILL NOT BE AVAILABLE UNTIL APPROX. OCTOBER 21, 2014. DO NOT EXPECT AN ALLOCATION PRIOR TO THAT DATE.

Model Year: **As of 2014 up to 2016**

Important: **CRITICAL WARNING** - THIS CAMPAIGN INCLUDES STEPS WHERE SEVERAL CONTROL UNITS IN THE VEHICLE WILL BE PROGRAMMED WITH THE PIWIS TESTER. IT IS CRITICAL THAT THE VEHICLE VOLTAGE BE BETWEEN 13.5 VOLTS AND 14.5 VOLTS DURING THIS PROGRAMMING. OTHERWISE, THE PROGRAMMING COULD FAIL RESULTING IN DAMAGED CONTROL UNITS. CONTROL UNITS DAMAGED BY INADEQUATE VOLTAGE WILL NOT BE COVERED UNDER WARRANTY. THE TECHNICIAN MUST VERIFY THE ACTUAL VEHICLE VOLTAGE IN THE INSTRUMENT CLUSTER OR IN THE PIWIS TESTER BEFORE STARTING THE CAMPAIGN AND ALSO DOCUMENT THE ACTUAL VOLTAGE ON THE REPAIR ORDER. IT IS ALSO ADVISABLE TO MONITOR THE VEHICLE VOLTAGE DURING THE PROGRAMMING VIA THE INSTRUMENT CLUSTER. PLEASE REFER TO EQUIPMENT INFORMATION EQ-1105 FOR A LIST OF SUITABLE BATTERY CHARGERS/POWER SUPPLIES WHICH SHOULD BE USED TO MAINTAIN VEHICLE VOLTAGE.

Model Line: **Cayenne (92A)**

Equipment: Alarm system with interior surveillance (I-no. **7AC, 7AH, 7AK** or **7AL**)

Concerns: **Sensor for interior surveillance in the roof console**

Information: This is to inform you of a voluntary Workshop Campaign on the above-mentioned vehicles. **A sensor for the interior surveillance system in the roof console that does not meet the required specifications may have been installed on the affected vehicles.**

This can cause increased triggering sensitivity under certain conditions, resulting in the triggering of implausible alarms.

Action Required: Check hardware version of the roof console and replace roof console if necessary.

Affected Vehicles: The VIN(s) can be checked by using PIWIS Vehicle Information link to verify if the campaign affects the vehicle. This campaign is scope specific to the VIN! Failure to verify in PIWIS may result in an improper repair. This campaign affects 6,303 Cayennes in North America.

Checking hardware version of roof console

- Tools:
- **9818 - PIWIS Tester II** with PIWIS Tester software version **14.300** (or higher) installed.
 - **Battery Charger/Power Supply** - Suitable for AGM Type batteries, recommended current rating of 70A fixed voltage 13.5V to 14.5V. Refer to Equipment Information EQ-1105.

Work Procedure: See Attachment "A".

Claim Submission: See Attachment "B".

Attachment "A": **Work Procedure**

NOTE: VEHICLE VOLTAGE MUST REMAIN BETWEEN 13.5 AND 14.5 VOLTS DURING THE ENTIRE WORK PROCEDURE.



Information

The procedure described here is based on the PIWIS Tester II software version **14.300**.

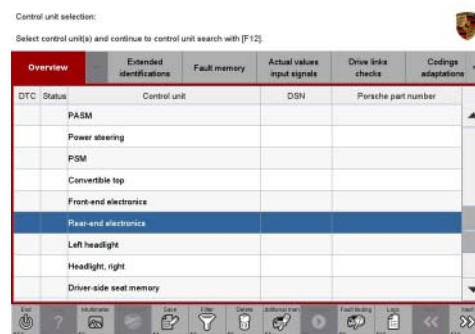
The PIWIS Tester instructions take precedence and in the event of a discrepancy, these are the instructions that must be followed.

A discrepancy may arise with later software versions for example.

- 1 Connect a battery charger or power supply, suitable for AGM type batteries, recommended current rating of 70A fixed voltage 13.5V to 14.5V to the jump-start terminals in the engine compartment.
- 2 Switch on the ignition using the **original driver's key**.
To do this, replace the control panel in the ignition lock with the original driver's key if necessary.
- 3 **9818 - PIWIS Tester II** with software version **14.300** (or higher) installed must be connected to the vehicle communication module (VCI) via the **USB cable**. Then, connect the communication module to the vehicle and switch on the PIWIS Tester.
- 4 On the PIWIS Tester start screen, call up the ⇒ **'Diagnostics'** menu and select the relevant vehicle type.

The diagnostic application is then started and the control unit selection screen is populated.

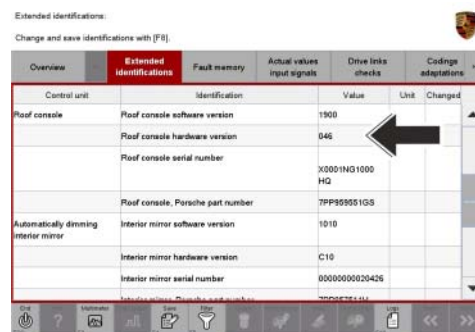
- 5 In the control unit selection screen (⇒ 'Overview' menu), select the ⇒ 'Rear-end electronics' control unit and press •>>" to confirm your selection ⇒ *Control unit selection - Rear-end electronics*.
- 6 When the question "Create Vehicle Analysis Log (VAL)?" appears, either press •F12" to create a VAL or press •F11" if you do not want to create a VAL.
- 7 Press •>>" to acknowledge the message informing you that campaigns for the vehicle are stored in the PIWIS information system.



Control unit selection - Rear-end electronics

- 8 Once the 'Rear-end electronics' control unit has been found and is displayed in the overview, select the ⇒ 'Extended identifications' menu.
- 9 Read out the value entered for "Roof console hardware version" ⇒ *Roof console hardware version - arrow-*:

- The **hardware version** of the roof console is **046** (or higher): ⇒ **End of action required, continue with Step 10.**
- If a roof console with the **hardware versions 044 or 045** is installed, the **roof console must be replaced**. To do this, first **complete Steps 10 to 12** and **then replace the roof console** ⇒ *Technical Information 'WE4600 Replacing roof console'.*



Roof console hardware version

- 10 Select the ⇒ 'Overview' menu on the PIWIS Tester and press •<<" to return to the control unit selection screen.
- 11 Switch off ignition.
- 12 Disconnect the PIWIS Tester from the vehicle.
- 13 Switch off and disconnect the battery charger.
- 14 On vehicles with Porsche Entry & Drive, replace the original driver's key in the ignition lock with the control panel again.
- 15 Enter the workshop campaign in the Warranty and Maintenance booklet.

Attachment "B": **Claim Submission** - Workshop Campaign WE46
Warranty claims should be submitted via WWS/PQIS.

Open campaigns may be checked by using either the PIWIS Vehicle Information system or through PQIS Job Creation.

Labor, parts, and sublet will be automatically inserted when Technician is selected in WWS/PQIS. If necessary, the required part numbers will need to be manually entered into warranty system by the dealer administrator.

Invoicing: **Scope 1:** Checking hardware version of roof console - **roof console does not need to be replaced.**

Working time:

Checking hardware version of roof console

Labor time: **30 TU**

Includes: Connecting and disconnecting battery charger
Connecting and disconnecting PIWIS Tester

⇒ **Damage code WE46 066 000 1**

Replacing roof console

Parts Info: **NOTE: PARTS ACQUISITION INFO**

1. The following part numbers will be auto allocated to your dealership:
 - a. 00004398931
 - b. 00004398935
 - c. 00004398916 (to be allocated when qtys. are available approx. 10.21.14)
2. The following part numbers may be obtained by filling a PTEC/PAV:
 - a. 00004398914
 - b. 00004398925
 - c. 00004398912



Information

The roof console to be used for the respective vehicle depends on the following equipment variants:

- Garage door opener
- Navigation system/hands-free equipment
- Parking assistant
- Courtesy lights
- Roof insert
- Deactivation option for passenger's airbag

Given the wide range of equipment-dependent variants of the roof console, equipment-specific scopes have been defined for replacing the roof console. Scope 1 – “Checking roof console” and **exactly one scope for “Replacing roof console” are assigned uniquely to each vehicle.**

⇒ To find out which scope is assigned to the vehicle for **replacing the roof console**, see PIWIS Vehicle Information.

The **part number** of the **roof console required** for the respective vehicle is specified in the **assigned scope for "Replacing roof console"**.

A **list of the scopes for "Replacing roof console"** with a **link** to the respective scope can be found under ⇒ *Technical Information 'WE4600 List of campaign scopes for replacing roof console'*.

- Tools:
- **9818 - PIWIS Tester II** with PIWIS Tester test software version **14.300** (or higher) installed.
 - **Battery Charger/Power Supply** - Suitable for AGM Type batteries, recommended current rating of 70A fixed voltage 13.5V to 14.5V. Refer to Equipment Information EQ-1105.
 - A suitable plastic assembly wedge

Procedure: NOTE: VEHICLE VOLTAGE MUST REMAIN BETWEEN 13.5 AND 14.5 VOLTS DURING THE ENTIRE WORK PROCEDURE.

NOTICE**Voltage peaks**

- **Risk of damage to load or to the control unit**
- ⇒ **Switch off ignition and remove remote control before disconnecting or removing load.**

- 1 Remove front roof trim panel (roof console) and install **new roof console**. ⇒ *Workshop Manual '708319 Removing and installing front roof trim panel'*.

NOTICE

Coding will be aborted in the event of low voltage.

- **Increased current draw during diagnosis can cause a drop in voltage, which can result in one or more fault entries and the abnormal termination of the coding process.**
- ⇒ **Before commencing work, connect a suitable battery charger or power supply, suitable for AGM type batteries, recommended current rating of 70A fixed voltage 13.5V to 14.5V to the jump-start terminals in the engine compartment.**

NOTICE

Coding will be aborted if the WLAN connection is unstable.

- **An unstable WLAN connection can interrupt communication between PIWIS Tester II and the vehicle communication module (VCI). As a result, coding may be aborted.**
- ⇒ **During control unit coding, always connect PIWIS Tester II to the vehicle communication module (VCI) via the USB cable.**

NOTICE

Control unit coding will be aborted if the driver's key is not recognized

- If the driver's key is not recognised in vehicles with Porsche Entry & Drive, coding cannot be started or will be interrupted.
- ⇒ Switch on the ignition using the original driver's key. To do this, replace the control panel in the ignition lock with the original driver's key if necessary.

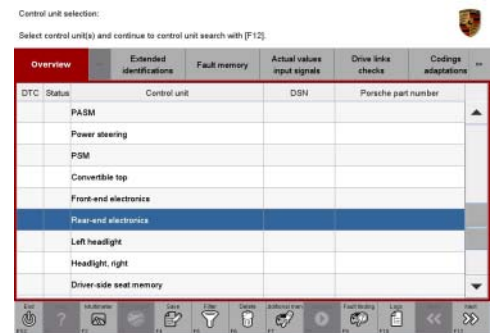


Information

To prevent malfunctions in the vehicle system due to the wide range of equipment variants, the **new roof console** must be **taught** following installation in the vehicle.

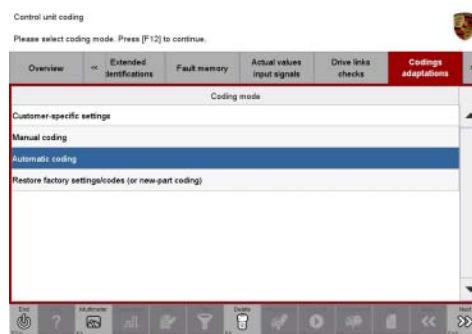
To do this, first **re-code** the **rear-end electronics** control unit automatically and then **teach** the **roof console** using the PIWIS Tester.

- 2 Switch on the ignition using the **original driver's key**.
- 3 **9818 - PIWIS Tester II** with software version **14.300** (or higher) installed must be connected to the vehicle communication module (VCI) via the **USB cable**. Then, re-connect the communication module to the vehicle.
- 4 Re-code rear-end electronics control unit automatically.
 - 4.1 In the control unit selection screen (⇒ **'Overview'** menu), select the ⇒ **'Rear-end electronics'** control unit and press **•>>** to confirm your selection ⇒ *Control unit selection - Rear-end electronics*.
 - 4.2 Once the 'Rear-end electronics' control unit has been found and is displayed in the overview, select the ⇒ **'Codings/adaptations'** menu.



Control unit selection - Rear-end electronics

- 4.3 Select the ⇒ **'Automatic coding'** function and press •>>" to start coding ⇒ *Automatic coding*.
- 4.4 When coding is complete, the message "Coding has been completed successfully" is displayed and a tick appears in the 'Status' box ⇒ *Coding successful*.



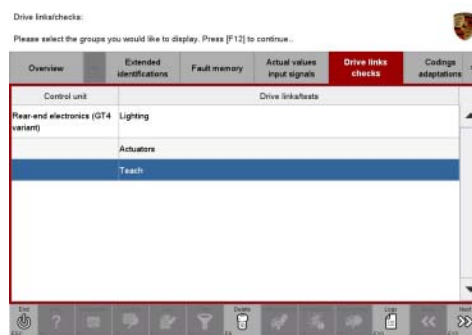
Automatic coding

If coding is not completed successfully (error message "Coding was not completed successfully"), coding must be **repeated**.

- 4.5 Once coding has been completed successfully, press •>>" to return to the start page of the ⇒ **'Codings/adaptations'** menu.
- 5 Teach the roof console to suit the vehicle.
 - 5.1 Select the ⇒ **'Drive links/checks'** menu.
 - 5.2 Select the ⇒ **'Teach'** function and press •>>" to confirm your selection ⇒ *'Teach' function*.



Coding successful



'Teach' function

5.3 Select the ⇒ **'Teach roof console'** function and press •>>" to confirm your selection ⇒ *Teaching roof console.*

5.4 Start the ⇒ **'Teach roof console'** function by pressing •F8" .

Once the roof console has been taught, the message **"Successful execution without return value"** appears in the PIWIS Tester display ⇒ *Roof console taught successfully.*

If the roof console **cannot** be taught successfully, the process must be **repeated.**

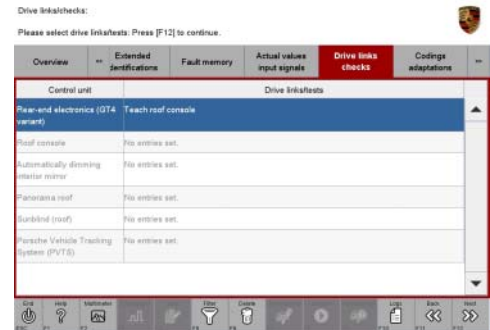
5.5 Once the roof console has been taught successfully, press •<<" to return to the start page of the ⇒ **"Drive links/checks"** menu.

5.6 Select the ⇒ **'Overview'** menu and press •<<" to return to the control unit selection screen.

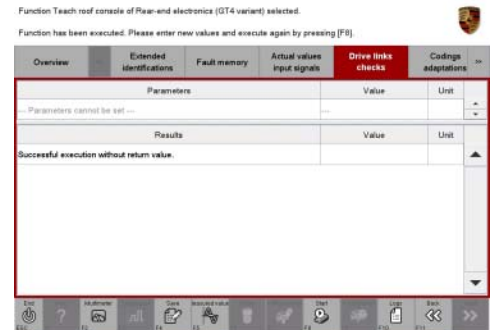
6 Read out and erase fault memories.

6.1 In the control unit selection screen (⇒ **'Overview'** menu), press •F7" to call up the ⇒ **'Additional menu'** (⇒ *Control unit selection*).

6.2 Select the function ⇒ **'Read all fault memories and erase if required'** and press •>>" to confirm ⇒ *Erasing fault memories.*



Teaching roof console



Roof console taught successfully

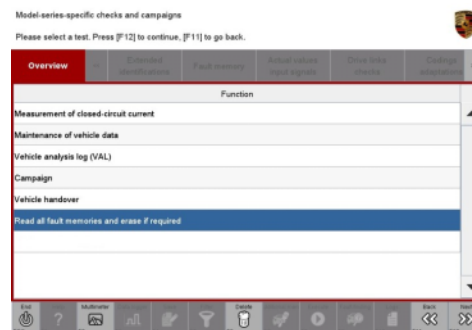


Control unit selection

The fault memories of the control units are read out.

6.3 Once you have read out the fault memories, delete the fault memory entries by pressing **•F8** .

6.4 Confirm the query as to whether you really want to delete all fault memory entries and press **•>>** ("Yes") to confirm. The faults stored in the fault memories of the various control units are deleted.



Erasing fault memories



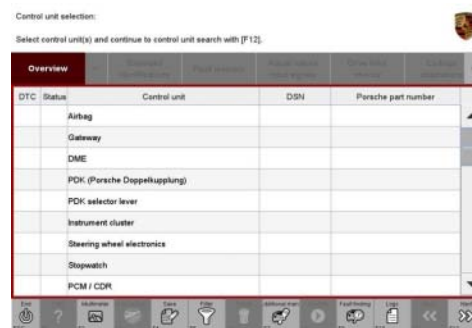
Information

If the fault memories of individual control units (e.g. fault memories of the control units for front-end electronics, rear-end electronics, etc.) cannot be erased, proceed as follows:

- Switch off ignition.
- Disconnect the PIWIS Tester diagnostic connector from the diagnostic socket.
- Lock the vehicle using the driver's key.
- Wait approx. 1 minute before unlocking the vehicle again.
- Plug the PIWIS Tester diagnostic connector into the diagnostic socket again and restore communication with the vehicle.
- Read out the fault memories of these control units again and erase the fault memories separately.

If control units are found to have faults, which cannot be erased and are not caused by replacing the roof console, these faults must be found and corrected. This work **cannot** be invoiced under the workshop campaign number.

6.5 Once you have erased the fault memories, select the **⇒ 'Overview'** menu to return to the control unit selection screen **⇒ Control unit selection**.



Control unit selection

7 Switch off ignition.

8 Disconnect the PIWIS Tester from the vehicle.

9 Switch off and disconnect the battery charger.

10 On vehicles with Porsche Entry & Drive, replace the original driver's key in the ignition lock with the control panel again.

11 Enter the workshop campaign in the Warranty and Maintenance booklet.

Attachment "B": **CLAIM SUBMISSION FOR ALL APPLICABLE SCOPES:**

Labor and parts will be inserted automatically when the technician is selected in WWS. If necessary, the required part numbers will need to be manually entered into WWS by the dealer administrator.

List of campaign scope for replacing roof console

Scopes: Click on the relevant **link** for the scope assigned to the vehicle (see PIWIS Vehicle Information) to go directly to the corresponding **campaign scope** for **replacing the roof console**.

Scope 2 – Scope 19: not valid for your vehicle type.

Scope 20: ⇒ *Technical Information 'WE4600 Scope 20 - Replacing roof console'*

Scope 21: ⇒ *Technical Information 'WE4600 Scope 21 - Replacing roof console'*

Scope 22: ⇒ *Technical Information 'WE4600 Scope 22 - Replacing roof console'*

Scope 23: ⇒ *Technical Information 'WE4600 Scope 23 - Replacing roof console'*

Scope 24: ⇒ *Technical Information 'WE4600 Scope 24 - Replacing roof console'*

Scope 25: ⇒ *Technical Information 'WE4600 Scope 25 - Replacing roof console'*

Scope 26: ⇒ *Technical Information 'WE4600 Scope 26 - Replacing roof console'*

Scope 27: ⇒ *Technical Information 'WE4600 Scope 27 - Replacing roof console'*

Scope 28: ⇒ *Technical Information 'WE4600 Scope 28 - Replacing roof console'*

Scope 29: ⇒ *Technical Information 'WE4600 Scope 29 - Replacing roof console'*

Scope 30: ⇒ *Technical Information 'WE4600 Scope 30 - Replacing roof console'*

Scope 31: ⇒ *Technical Information 'WE4600 Scope 31 - Replacing roof console'*

Scope 32: ⇒ *Technical Information 'WE4600 Scope 32 - Replacing roof console'*

Scope 33: ⇒ *Technical Information 'WE4600 Scope 33 - Replacing roof console'*

Scope 34: ⇒ *Technical Information 'WE4600 Scope 34 - Replacing roof console'*

Scope 35: ⇒ *Technical Information 'WE4600 Scope 35 - Replacing roof console'*

Scope 36: ⇒ *Technical Information 'WE4600 Scope 36 - Replacing roof console'*

Scope 37: ⇒ *Technical Information 'WE4600 Scope 37 - Replacing roof console'*

Scope 38: ⇒ *Technical Information 'WE4600 Scope 38 - Replacing roof console'*

Scope 39: ⇒ *Technical Information 'WE4600 Scope 39 - Replacing roof console'*

Scope 40: ⇒ *Technical Information 'WE4600 Scope 40 - Replacing roof console'*

Scope 41: ⇒ *Technical Information 'WE4600 Scope 41 - Replacing roof console'*

Scope 42: ⇒ *Technical Information 'WE4600 Scope 42 - Replacing roof console'*

Scope 43: ⇒ *Technical Information 'WE4600 Scope 43 - Replacing roof console'*

Scope 44: ⇒ *Technical Information 'WE4600 Scope 44 - Replacing roof console'*

Scope 45: ⇒ *Technical Information 'WE4600 Scope 45 - Replacing roof console'*

Scope 46: ⇒ *Technical Information 'WE4600 Scope 46 - Replacing roof console'*

Scope 47: ⇒ *Technical Information 'WE4600 Scope 47 - Replacing roof console'*

Scope 48: ⇒ *Technical Information 'WE4600 Scope 48 - Replacing roof console'*

Scope 49: ⇒ *Technical Information 'WE4600 Scope 49 - Replacing roof console'*

Scope 50: ⇒ *Technical Information 'WE4600 Scope 50 - Replacing roof console'*

Scope 51: ⇒ *Technical Information 'WE4600 Scope 51 - Replacing roof console'*

Scope 52: ⇒ *Technical Information 'WE4600 Scope 52 - Replacing roof console'*

Scope 20 - Replacing roof console

Invoicing: Checking hardware version of roof console and **replacing** roof console.

Vehicles with the following I-nos.: *

- Garage door opener: **VCO**
- Navigation: **7Q0** or **7Q7** or **7T1** or **7T4**
- Parking assistant: **7X0** or **7X9**
- Courtesy lights: **9MA**
- Roof insert: **3FA**
- Passenger's airbag: **4UE** or **4UP** or **4UQ**

Working time:

Checking hardware version of roof console and replacing roof console Labor time: **74 TU**

Includes: Connecting and disconnecting battery charger
 Connecting and disconnecting PIWIS Tester (2x)
 Removing and installing roof console
 Re-coding rear-end electronics control unit automatically
 Teaching roof console
 Reading out and erasing fault memories

Parts required:

000.043.989.09	Roof console	1 ea.
----------------	--------------	-------

⇒ **Damage code WE46 066 000 2**

* For I-no. designations, see ⇒ *Technical Information 'WE4600 Designations of the I-nos.'*

Scope 21 - Replacing roof console

Invoicing: Checking hardware version of roof console and **replacing** roof console.

Vehicles with the following I-nos.: *

- Garage door opener: **VCO**
- Navigation: **7Q0** or **7Q7** or **7T1** or **7T4**
- Parking assistant: **7X0** or **7X9**
- Courtesy lights: **9MA**
- Roof insert: **3FE**
- Passenger's airbag: **4UE** or **4UP** or **4UQ**

Working time:

Checking hardware version of roof console and replacing roof console

Labor time: **74 TU**

Includes:

- Connecting and disconnecting battery charger
- Connecting and disconnecting PIWIS Tester (2x)
- Removing and installing roof console
- Re-coding rear-end electronics control unit automatically
- Teaching roof console
- Reading out and erasing fault memories

Parts required:

000.043.989.10	Roof console	1 ea.
----------------	--------------	-------

⇒ **Damage code WE46 066 000 2*** For I-no. designations, see ⇒ *Technical Information 'WE4600 Designations of the I-nos.'***Scope 22 - Replacing roof console**Invoicing: Checking hardware version of roof console and **replacing** roof console.

Vehicles with the following I-nos.: *

- Garage door opener: **VCO**
- Navigation: **7Q0** or **7Q7** or **7T1** or **7T4**
- Parking assistant: **7X2** or **7X8**
- Courtesy lights: **9MA**
- Roof insert: **3FA**
- Passenger's airbag: **4UE** or **4UP** or **4UQ**

Working time:

Checking hardware version of roof console and replacing roof console

Labor time: **74 TU**

Includes:

- Connecting and disconnecting battery charger
- Connecting and disconnecting PIWIS Tester (2x)
- Removing and installing roof console
- Re-coding rear-end electronics control unit automatically
- Teaching roof console
- Reading out and erasing fault memories

Parts required:

000.043.989.11	Roof console	1 ea.
----------------	--------------	-------

⇒ Damage code WE46 066 000 2

* For I-no. designations, see ⇒ *Technical Information 'WE4600 Designations of the I-nos.'*

Scope 23 - Replacing roof console

Invoicing: Checking hardware version of roof console and **replacing** roof console.

Vehicles with the following I-nos.: *

- Garage door opener: **VC1** or **VC2**
- Navigation: **7Q0** or **7Q7** or **7T1** or **7T4**
- Parking assistant: **7X0** or **7X9**
- Courtesy lights: **9MA**
- Roof insert: **3FA**
- Passenger's airbag: **4UE** or **4UP** or **4UQ**

Working time:

Checking hardware version of roof console and replacing roof console	Labor time: 74 TU
Includes:	
Connecting and disconnecting battery charger	
Connecting and disconnecting PIWIS Tester (2x)	
Removing and installing roof console	
Re-coding rear-end electronics control unit automatically	
Teaching roof console	
Reading out and erasing fault memories	
Parts required:	
000.043.989.12 Roof console	1 ea.
⇒ Damage code WE46 066 000 2	

* For I-no. designations, see ⇒ *Technical Information 'WE4600 Designations of the I-nos.'*

Scope 24 - Replacing roof console

Invoicing: Checking hardware version of roof console and **replacing** roof console.

Vehicles with the following I-nos.: *

- Garage door opener: **VCO**
- Navigation: **7Q0** or **7Q7** or **7T1** or **7T4**
- Parking assistant: **7X2** or **7X8**
- Courtesy lights: **9MA**

- Roof insert: **3FE**
- Passenger's airbag: **4UE** or **4UP** or **4UQ**

Working time:

Checking hardware version of roof console and replacing roof console

Labor time: **74 TU**

Includes:

- Connecting and disconnecting battery charger
- Connecting and disconnecting PIWIS Tester (2x)
- Removing and installing roof console
- Re-coding rear-end electronics control unit automatically
- Teaching roof console
- Reading out and erasing fault memories

Parts required:

000.043.989.13 Roof console 1 ea.

⇒ **Damage code WE46 066 000 2**

* For I-no. designations, see ⇒ *Technical Information 'WE4600 Designations of the I-nos.'*

Scope 25 - Replacing roof console

Invoicing: Checking hardware version of roof console and **replacing** roof console.

Vehicles with the following I-nos.: *

- Garage door opener: **VC1** or **VC2**
- Navigation: **7Q0** or **7Q7** or **7T1** or **7T4**
- Parking assistant: **7X2** or **7X8**
- Courtesy lights: **9MA**
- Roof insert: **3FA**
- Passenger's airbag: **4UE** or **4UP** or **4UQ**

Working time:

Checking hardware version of roof console and replacing roof console

Labor time: **74 TU**

Includes:

- Connecting and disconnecting battery charger
- Connecting and disconnecting PIWIS Tester (2x)
- Removing and installing roof console
- Re-coding rear-end electronics control unit automatically
- Teaching roof console
- Reading out and erasing fault memories

Parts required:

000.043.989.14	Roof console	1 ea.
⇒ Damage code WE46 066 000 2		

* For I-no. designations, see ⇒ *Technical Information 'WE4600 Designations of the I-nos.'*

Scope 26 - Replacing roof console

Invoicing: Checking hardware version of roof console and **replacing** roof console.

Vehicles with the following I-nos.: *

- Garage door opener: **VC1** or **VC2**
- Navigation: **7Q0** or **7Q7** or **7T1** or **7T4**
- Parking assistant: **7X0** or **7X9**
- Courtesy lights: **9MA**
- Roof insert: **3FE**
- Passenger's airbag: **4UE** or **4UP** or **4UQ**

Working time:		
Checking hardware version of roof console and replacing roof console		Labor time: 74 TU
Includes:	Connecting and disconnecting battery charger	
	Connecting and disconnecting PIWIS Tester (2x)	
	Removing and installing roof console	
	Re-coding rear-end electronics control unit automatically	
	Teaching roof console	
	Reading out and erasing fault memories	
Parts required:		
000.043.989.15	Roof console	1 ea.
⇒ Damage code WE46 066 000 2		

* For I-no. designations, see ⇒ *Technical Information 'WE4600 Designations of the I-nos.'*

Scope 27 - Replacing roof console

Invoicing: Checking hardware version of roof console and **replacing** roof console.

Vehicles with the following I-nos.: *

- Garage door opener: **VC1** or **VC2**
- Navigation: **7Q0** or **7Q7** or **7T1** or **7T4**
- Parking assistant: **7X2** or **7X8**

- Courtesy lights: **9MA**
- Roof insert: **3FE**
- Passenger's airbag: **4UE** or **4UP** or **4UQ**

Working time:

Checking hardware version of roof console and replacing roof console

Labor time: **74 TU**

Includes:

- Connecting and disconnecting battery charger
- Connecting and disconnecting PIWIS Tester (2x)
- Removing and installing roof console
- Re-coding rear-end electronics control unit automatically
- Teaching roof console
- Reading out and erasing fault memories

Parts required:

000.043.989.16	Roof console	1 ea.
----------------	--------------	-------

⇒ **Damage code WE46 066 000 2*** For I-no. designations, see ⇒ *Technical Information 'WE4600 Designations of the I-nos.'***Scope 28 - Replacing roof console**Invoicing: Checking hardware version of roof console and **replacing** roof console.

Vehicles with the following I-nos.: *

- Garage door opener: **VCO**
- Navigation: **7Q4**
- Parking assistant: **7X0** or **7X9**
- Courtesy lights: **9MA**
- Roof insert: **3FA**
- Passenger's airbag: **4UE** or **4UP** or **4UQ**

Working time:

Checking hardware version of roof console and replacing roof console

Labor time: **74 TU**

Includes:

- Connecting and disconnecting battery charger
- Connecting and disconnecting PIWIS Tester (2x)
- Removing and installing roof console
- Re-coding rear-end electronics control unit automatically
- Teaching roof console
- Reading out and erasing fault memories

Parts required:		
000.043.989.17	Roof console	1 ea.
⇒ Damage code WE46 066 000 2		

* For I-no. designations, see ⇒ *Technical Information 'WE4600 Designations of the I-nos.'*

Scope 29 - Replacing roof console

Invoicing: Checking hardware version of roof console and **replacing** roof console.

Vehicles with the following I-nos.: *

- Garage door opener: **VCO**
- Navigation: **7Q4**
- Parking assistant: **7X0** or **7X9**
- Courtesy lights: **9MA**
- Roof insert: **3FE**
- Passenger's airbag: **4UE** or **4UP** or **4UQ**

Working time:		
Checking hardware version of roof console and replacing roof console		Labor time: 74 TU
Includes:	Connecting and disconnecting battery charger Connecting and disconnecting PIWIS Tester (2x) Removing and installing roof console Re-coding rear-end electronics control unit automatically Teaching roof console Reading out and erasing fault memories	
Parts required:		
000.043.989.18	Roof console	1 ea.
⇒ Damage code WE46 066 000 2		

* For I-no. designations, see ⇒ *Technical Information 'WE4600 Designations of the I-nos.'*

Scope 30 - Replacing roof console

Invoicing: Checking hardware version of roof console and **replacing** roof console.

Vehicles with the following I-nos.: *

- Garage door opener: **VCO**
- Navigation: **7Q4**

- Parking assistant: **7X2** or **7X8**
- Courtesy lights: **9MA**
- Roof insert: **3FA**
- Passenger's airbag: **4UE** or **4UP** or **4UQ**

Working time:

Checking hardware version of roof console and replacing roof console

Labor time: **74 TU**

Includes: Connecting and disconnecting battery charger
 Connecting and disconnecting PIWIS Tester (2x)
 Removing and installing roof console
 Re-coding rear-end electronics control unit automatically
 Teaching roof console
 Reading out and erasing fault memories

Parts required:

000.043.989.19	Roof console	1 ea.
----------------	--------------	-------

⇒ **Damage code WE46 066 000 2*** For I-no. designations, see ⇒ *Technical Information 'WE4600 Designations of the I-nos.'***Scope 31 - Replacing roof console**Invoicing: Checking hardware version of roof console and **replacing** roof console.

Vehicles with the following I-nos.: *

- Garage door opener: **VCO**
- Navigation: **7Q4**
- Parking assistant: **7X2** or **7X8**
- Courtesy lights: **9MA**
- Roof insert: **3FE**
- Passenger's airbag: **4UE** or **4UP** or **4UQ**

Working time:

Checking hardware version of roof console and replacing roof console

Labor time: **74 TU**

Includes: Connecting and disconnecting battery charger
 Connecting and disconnecting PIWIS Tester (2x)
 Removing and installing roof console
 Re-coding rear-end electronics control unit automatically
 Teaching roof console
 Reading out and erasing fault memories

Parts required:

000.043.989.20 Roof console 1 ea.

⇒ **Damage code WE46 066 000 2**

* For I-no. designations, see ⇒ *Technical Information 'WE4600 Designations of the I-nos.'*

Scope 32 - Replacing roof console

Invoicing: Checking hardware version of roof console and **replacing** roof console.

Vehicles with the following I-nos.: *

- Garage door opener: **VCO**
- Navigation: **7Q0** or **7Q7** or **7T1** or **7T4**
- Parking assistant: **7X0** or **7X9**
- Courtesy lights: **9MB**
- Roof insert: **3FA**
- Passenger's airbag: **4UE** or **4UP** or **4UQ**

Working time:

Checking hardware version of roof console and replacing roof console

Labor time: **74 TU**

Includes: Connecting and disconnecting battery charger
 Connecting and disconnecting PIWIS Tester (2x)
 Removing and installing roof console
 Re-coding rear-end electronics control unit automatically
 Teaching roof console
 Reading out and erasing fault memories

Parts required:

7PP.868.404.MH Roof console 1 ea.

⇒ **Damage code WE46 066 000 2**

* For I-no. designations, see ⇒ *Technical Information 'WE4600 Designations of the I-nos.'*

Scope 33 - Replacing roof console

Invoicing: Checking hardware version of roof console and **replacing** roof console.

Vehicles with the following I-nos.: *

- Garage door opener: **VCO**
- Navigation: **7Q0** or **7Q7** or **7T1** or **7T4**

- Parking assistant: **7X2** or **7X8**
- Courtesy lights: **9MB**
- Roof insert: **3FA**
- Passenger's airbag: **4UE** or **4UP** or **4UQ**

Working time:

Checking hardware version of roof console and replacing roof console

Labor time: **74 TU**

Includes: Connecting and disconnecting battery charger
 Connecting and disconnecting PIWIS Tester (2x)
 Removing and installing roof console
 Re-coding rear-end electronics control unit automatically
 Teaching roof console
 Reading out and erasing fault memories

Parts required:

000.043.989.22	Roof console	1 ea.
----------------	--------------	-------

⇒ **Damage code WE46 066 000 2*** For I-no. designations, see ⇒ *Technical Information 'WE4600 Designations of the I-nos.'***Scope 34 - Replacing roof console**Invoicing: Checking hardware version of roof console and **replacing** roof console.

Vehicles with the following I-nos.: *

- Garage door opener: **VC1** or **VC2**
- Navigation: **7Q0** or **7Q7** or **7T1** or **7T4**
- Parking assistant: **7X0** or **7X9**
- Courtesy lights: **9MB**
- Roof insert: **3FA**
- Passenger's airbag: **4UE** or **4UP** or **4UQ**

Working time:

Checking hardware version of roof console and replacing roof console

Labor time: **74 TU**

Includes: Connecting and disconnecting battery charger
 Connecting and disconnecting PIWIS Tester (2x)
 Removing and installing roof console
 Re-coding rear-end electronics control unit automatically
 Teaching roof console
 Reading out and erasing fault memories

Parts required:		
000.043.989.23	Roof console	1 ea.
⇒ Damage code WE46 066 000 2		

* For I-no. designations, see ⇒ *Technical Information 'WE4600 Designations of the I-nos.'*

Scope 35 - Replacing roof console

Invoicing: Checking hardware version of roof console and **replacing** roof console.

Vehicles with the following I-nos.: *

- Garage door opener: **VC0**
- Navigation: **7Q0** or **7Q7** or **7T1** or **7T4**
- Parking assistant: **7X2** or **7X8**
- Courtesy lights: **9MB**
- Roof insert: **3FE**
- Passenger's airbag: **4UE** or **4UP** or **4UQ**

Working time:		
Checking hardware version of roof console and replacing roof console		Labor time: 74 TU
Includes:	Connecting and disconnecting battery charger Connecting and disconnecting PIWIS Tester (2x) Removing and installing roof console Re-coding rear-end electronics control unit automatically Teaching roof console Reading out and erasing fault memories	
Parts required:		
000.043.989.24	Roof console	1 ea.
⇒ Damage code WE46 066 000 2		

* For I-no. designations, see ⇒ *Technical Information 'WE4600 Designations of the I-nos.'*

Scope 36 - Replacing roof console

Invoicing: Checking hardware version of roof console and **replacing** roof console.

Vehicles with the following I-nos.: *

- Garage door opener: **VC1** or **VC2**
- Navigation: **7Q0** or **7Q7** or **7T1** or **7T4**

- Parking assistant: **7X2** or **7X8**
- Courtesy lights: **9MB**
- Roof insert: **3FA**
- Passenger's airbag: **4UE** or **4UP** or **4UQ**

Working time:

Checking hardware version of roof console and replacing roof console

Labor time: **74 TU**

Includes:

- Connecting and disconnecting battery charger
- Connecting and disconnecting PIWIS Tester (2x)
- Removing and installing roof console
- Re-coding rear-end electronics control unit automatically
- Teaching roof console
- Reading out and erasing fault memories

Parts required:

000.043.989.25	Roof console	1 ea.
----------------	--------------	-------

⇒ **Damage code WE46 066 000 2*** For I-no. designations, see ⇒ *Technical Information 'WE4600 Designations of the I-nos.'***Scope 37 - Replacing roof console**Invoicing: Checking hardware version of roof console and **replacing** roof console.

Vehicles with the following I-nos.: *

- Garage door opener: **VC1** or **VC2**
- Navigation: **7Q0** or **7Q7** or **7T1** or **7T4**
- Parking assistant: **7X0** or **7X9**
- Courtesy lights: **9MB**
- Roof insert: **3FE**
- Passenger's airbag: **4UE** or **4UP** or **4UQ**

Working time:

Checking hardware version of roof console and replacing roof console

Labor time: **74 TU**

Includes:

- Connecting and disconnecting battery charger
- Connecting and disconnecting PIWIS Tester (2x)
- Removing and installing roof console
- Re-coding rear-end electronics control unit automatically
- Teaching roof console
- Reading out and erasing fault memories

Parts required:		
000.043.989.26	Roof console	1 ea.
⇒ Damage code WE46 066 000 2		

* For I-no. designations, see ⇒ *Technical Information 'WE4600 Designations of the I-nos.'*

Scope 38 - Replacing roof console

Invoicing: Checking hardware version of roof console and **replacing** roof console.

Vehicles with the following I-nos.: *

- Garage door opener: **VC1** or **VC2**
- Navigation: **7Q0** or **7Q7** or **7T1** or **7T4**
- Parking assistant: **7X2** or **7X8**
- Courtesy lights: **9MB**
- Roof insert: **3FE**
- Passenger's airbag: **4UE** or **4UP** or **4UQ**

Working time:		
Checking hardware version of roof console and replacing roof console		Labor time: 74 TU
Includes:	Connecting and disconnecting battery charger Connecting and disconnecting PIWIS Tester (2x) Removing and installing roof console Re-coding rear-end electronics control unit automatically Teaching roof console Reading out and erasing fault memories	
Parts required:		
000.043.989.27	Roof console	1 ea.
⇒ Damage code WE46 066 000 2		

* For I-no. designations, see ⇒ *Technical Information 'WE4600 Designations of the I-nos.'*

Scope 39 - Replacing roof console

Invoicing: Checking hardware version of roof console and **replacing** roof console.

Vehicles with the following I-nos.: *

- Garage door opener: **VCO**
- Navigation: **7Q4**

- Parking assistant: **7X0** or **7X9**
- Courtesy lights: **9MB**
- Roof insert: **3FA**
- Passenger's airbag: **4UE** or **4UP** or **4UQ**

Working time:

Checking hardware version of roof console and replacing roof console

Labor time: **74 TU**

Includes: Connecting and disconnecting battery charger
 Connecting and disconnecting PIWIS Tester (2x)
 Removing and installing roof console
 Re-coding rear-end electronics control unit automatically
 Teaching roof console
 Reading out and erasing fault memories

Parts required:

7PP.868.404.MR	Roof console	1 ea.
----------------	--------------	-------

⇒ **Damage code WE46 066 000 2*** For I-no. designations, see ⇒ *Technical Information 'WE4600 Designations of the I-nos.'***Scope 40 - Replacing roof console**Invoicing: Checking hardware version of roof console and **replacing** roof console.

Vehicles with the following I-nos.: *

- Garage door opener: **VCO**
- Navigation: **7Q4**
- Parking assistant: **7X2** or **7X8**
- Courtesy lights: **9MB**
- Roof insert: **3FA**
- Passenger's airbag: **4UE** or **4UP** or **4UQ**

Working time:

Checking hardware version of roof console and replacing roof console

Labor time: **74 TU**

Includes: Connecting and disconnecting battery charger
 Connecting and disconnecting PIWIS Tester (2x)
 Removing and installing roof console
 Re-coding rear-end electronics control unit automatically
 Teaching roof console
 Reading out and erasing fault memories

Parts required:

000.043.989.28 Roof console 1 ea.

⇒ **Damage code WE46 066 000 2**

* For I-no. designations, see ⇒ *Technical Information 'WE4600 Designations of the I-nos.'*

Scope 41 - Replacing roof console

Invoicing: Checking hardware version of roof console and **replacing** roof console.

Vehicles with the following I-nos.: *

- Garage door opener: **VCO**
- Navigation: **7Q4**
- Parking assistant: **7X2** or **7X8**
- Courtesy lights: **9MB**
- Roof insert: **3FE**
- Passenger's airbag: **4UE** or **4UP** or **4UQ**

Working time:

Checking hardware version of roof console and replacing roof console Labor time: **74 TU**

Includes: Connecting and disconnecting battery charger
 Connecting and disconnecting PIWIS Tester (2x)
 Removing and installing roof console
 Re-coding rear-end electronics control unit automatically
 Teaching roof console
 Reading out and erasing fault memories

Parts required:

7PP.868.404.NB Roof console 1 ea.

⇒ **Damage code WE46 066 000 2**

* For I-no. designations, see ⇒ *Technical Information 'WE4600 Designations of the I-nos.'*

Scope 42 - Replacing roof console

Invoicing: Checking hardware version of roof console and **replacing** roof console.

Vehicles with the following I-nos.: *

- Garage door opener: **VCO**
- Navigation: **7Q0** or **7Q7** or **7T1** or **7T4**

- Parking assistant: **7X0** or **7X9**
- Courtesy lights: **9MA**
- Roof insert: **3FU**
- Passenger's airbag: **4UE** or **4UP** or **4UQ**

Working time:

Checking hardware version of roof console and replacing roof console

Labor time: **74 TU**

Includes: Connecting and disconnecting battery charger
 Connecting and disconnecting PIWIS Tester (2x)
 Removing and installing roof console
 Re-coding rear-end electronics control unit automatically
 Teaching roof console
 Reading out and erasing fault memories

Parts required:

000.043.989.29	Roof console	1 ea.
----------------	--------------	-------

⇒ **Damage code WE46 066 000 2*** For I-no. designations, see ⇒ *Technical Information 'WE4600 Designations of the I-nos.'***Scope 43 - Replacing roof console**Invoicing: Checking hardware version of roof console and **replacing** roof console.

Vehicles with the following I-nos.: *

- Garage door opener: **VCO**
- Navigation: **7Q0** or **7Q7** or **7T1** or **7T4**
- Parking assistant: **7X2** or **7X8**
- Courtesy lights: **9MA**
- Roof insert: **3FU**
- Passenger's airbag: **4UE** or **4UP** or **4UQ**

Working time:

Checking hardware version of roof console and replacing roof console

Labor time: **74 TU**

Includes: Connecting and disconnecting battery charger
 Connecting and disconnecting PIWIS Tester (2x)
 Removing and installing roof console
 Re-coding rear-end electronics control unit automatically
 Teaching roof console
 Reading out and erasing fault memories

Parts required:		
000.043.989.30	Roof console	1 ea.
⇒ Damage code WE46 066 000 2		

* For I-no. designations, see ⇒ *Technical Information 'WE4600 Designations of the I-nos.'*

Scope 44 - Replacing roof console

Invoicing: Checking hardware version of roof console and **replacing** roof console.

Vehicles with the following I-nos.: *

- Garage door opener: **VC1** or **VC2**
- Navigation: **7Q0** or **7Q7** or **7T1** or **7T4**
- Parking assistant: **7X0** or **7X9**
- Courtesy lights: **9MA**
- Roof insert: **3FU**
- Passenger's airbag: **4UE** or **4UP** or **4UQ**

Working time:		
Checking hardware version of roof console and replacing roof console		Labor time: 74 TU
Includes:	Connecting and disconnecting battery charger Connecting and disconnecting PIWIS Tester (2x) Removing and installing roof console Re-coding rear-end electronics control unit automatically Teaching roof console Reading out and erasing fault memories	
Parts required:		
000.043.989.37	Roof console	1 ea.
⇒ Damage code WE46 066 000 2		

* For I-no. designations, see ⇒ *Technical Information 'WE4600 Designations of the I-nos.'*

Scope 45 - Replacing roof console

Invoicing: Checking hardware version of roof console and **replacing** roof console.

Vehicles with the following I-nos.: *

- Garage door opener: **VC1** or **VC2**
- Navigation: **7Q0** or **7Q7** or **7T1** or **7T4**

- Parking assistant: **7X2** or **7X8**
- Courtesy lights: **9MA**
- Roof insert: **3FU**
- Passenger's airbag: **4UE** or **4UP** or **4UQ**

Working time:

Checking hardware version of roof console and replacing roof console

Labor time: **74 TU**

Includes: Connecting and disconnecting battery charger
 Connecting and disconnecting PIWIS Tester (2x)
 Removing and installing roof console
 Re-coding rear-end electronics control unit automatically
 Teaching roof console
 Reading out and erasing fault memories

Parts required:

000.043.989.31	Roof console	1 ea.
----------------	--------------	-------

⇒ **Damage code WE46 066 000 2*** For I-no. designations, see ⇒ *Technical Information 'WE4600 Designations of the I-nos.'***Scope 46 - Replacing roof console**Invoicing: Checking hardware version of roof console and **replacing** roof console.

Vehicles with the following I-nos.: *

- Garage door opener: **VCO**
- Navigation: **7Q4**
- Parking assistant: **7X0** or **7X9**
- Courtesy lights: **9MA**
- Roof insert: **3FU**
- Passenger's airbag: **4UE** or **4UP** or **4UQ**

Working time:

Checking hardware version of roof console and replacing roof console

Labor time: **74 TU**

Includes: Connecting and disconnecting battery charger
 Connecting and disconnecting PIWIS Tester (2x)
 Removing and installing roof console
 Re-coding rear-end electronics control unit automatically
 Teaching roof console
 Reading out and erasing fault memories

Parts required:

958.613.946.04 Roof console 1 ea.

⇒ **Damage code WE46 066 000 2**

* For I-no. designations, see ⇒ *Technical Information 'WE4600 Designations of the I-nos.'*

Scope 47 - Replacing roof console

Invoicing: Checking hardware version of roof console and **replacing** roof console.

Vehicles with the following I-nos.: *

- Garage door opener: **VCO**
- Navigation: **7Q4**
- Parking assistant: **7X2** or **7X8**
- Courtesy lights: **9MA**
- Roof insert: **3FU**
- Passenger's airbag: **4UE** or **4UP** or **4UQ**

Working time:

Checking hardware version of roof console and replacing roof console Labor time: **74 TU**

Includes: Connecting and disconnecting battery charger
 Connecting and disconnecting PIWIS Tester (2x)
 Removing and installing roof console
 Re-coding rear-end electronics control unit automatically
 Teaching roof console
 Reading out and erasing fault memories

Parts required:

000.043.989.32 Roof console 1 ea.

⇒ **Damage code WE46 066 000 2**

* For I-no. designations, see ⇒ *Technical Information 'WE4600 Designations of the I-nos.'*

Scope 48 - Replacing roof console

Invoicing: Checking hardware version of roof console and **replacing** roof console.

Vehicles with the following I-nos.: *

- Garage door opener: **VCO**
- Navigation: **7Q0** or **7Q7** or **7T1** or **7T4**

- Parking assistant: **7X0** or **7X9**
- Courtesy lights: **9MB**
- Roof insert: **3FU**
- Passenger's airbag: **4UE** or **4UP** or **4UQ**

Working time:

Checking hardware version of roof console and replacing roof console

Labor time: **74 TU**

Includes:

- Connecting and disconnecting battery charger
- Connecting and disconnecting PIWIS Tester (2x)
- Removing and installing roof console
- Re-coding rear-end electronics control unit automatically
- Teaching roof console
- Reading out and erasing fault memories

Parts required:

7PP.868.404.NP	Roof console	1 ea.
----------------	--------------	-------

⇒ **Damage code WE46 066 000 2*** For I-no. designations, see ⇒ *Technical Information 'WE4600 Designations of the I-nos.'***Scope 49 - Replacing roof console**Invoicing: Checking hardware version of roof console and **replacing** roof console.

Vehicles with the following I-nos.: *

- Garage door opener: **VCO**
- Navigation: **7Q0** or **7Q7** or **7T1** or **7T4**
- Parking assistant: **7X2** or **7X8**
- Courtesy lights: **9MB**
- Roof insert: **3FU**
- Passenger's airbag: **4UE** or **4UP** or **4UQ**

Working time:

Checking hardware version of roof console and replacing roof console

Labor time: **74 TU**

Includes:

- Connecting and disconnecting battery charger
- Connecting and disconnecting PIWIS Tester (2x)
- Removing and installing roof console
- Re-coding rear-end electronics control unit automatically
- Teaching roof console
- Reading out and erasing fault memories

Parts required:

000.043.989.33 Roof console 1 ea.

⇒ **Damage code WE46 066 000 2**

* For I-no. designations, see ⇒ *Technical Information 'WE4600 Designations of the I-nos.'*

Scope 50 - Replacing roof console

Invoicing: Checking hardware version of roof console and **replacing** roof console.

Vehicles with the following I-nos.: *

- Garage door opener: **VC1** or **VC2**
- Navigation: **7Q0** or **7Q7** or **7T1** or **7T4**
- Parking assistant: **7X0** or **7X9**
- Courtesy lights: **9MB**
- Roof insert: **3FU**
- Passenger's airbag: **4UE** or **4UP** or **4UQ**

Working time:

Checking hardware version of roof console and replacing roof console

Labor time: **74 TU**

Includes: Connecting and disconnecting battery charger
 Connecting and disconnecting PIWIS Tester (2x)
 Removing and installing roof console
 Re-coding rear-end electronics control unit automatically
 Teaching roof console
 Reading out and erasing fault memories

Parts required:

000.043.989.34 Roof console 1 ea.

⇒ **Damage code WE46 066 000 2**

* For I-no. designations, see ⇒ *Technical Information 'WE4600 Designations of the I-nos.'*

Scope 51 - Replacing roof console

Invoicing: Checking hardware version of roof console and **replacing** roof console.

Vehicles with the following I-nos.: *

- Garage door opener: **VC1** or **VC2**
- Navigation: **7Q0** or **7Q7** or **7T1** or **7T4**

- Parking assistant: **7X2** or **7X8**
- Courtesy lights: **9MB**
- Roof insert: **3FU**
- Passenger's airbag: **4UE** or **4UP** or **4UQ**

Working time:

Checking hardware version of roof console and replacing roof console

Labor time: **74 TU**

Includes: Connecting and disconnecting battery charger
 Connecting and disconnecting PIWIS Tester (2x)
 Removing and installing roof console
 Re-coding rear-end electronics control unit automatically
 Teaching roof console
 Reading out and erasing fault memories

Parts required:

000.043.989.35 Roof console 1 ea.

⇒ **Damage code WE46 066 000 2*** For I-no. designations, see ⇒ *Technical Information 'WE4600 Designations of the I-nos.'***Scope 52 - Replacing roof console**Invoicing: Checking hardware version of roof console and **replacing** roof console.

Vehicles with the following I-nos.: *

- Garage door opener: **VCO**
- Navigation: **7Q4**
- Parking assistant: **7X2** or **7X8**
- Courtesy lights: **9MB**
- Roof insert: **3FU**
- Passenger's airbag: **4UE** or **4UP** or **4UQ**

Working time:

Checking hardware version of roof console and replacing roof console

Labor time: **74 TU**

Includes: Connecting and disconnecting battery charger
 Connecting and disconnecting PIWIS Tester (2x)
 Removing and installing roof console
 Re-coding rear-end electronics control unit automatically
 Teaching roof console
 Reading out and erasing fault memories

Parts required:

000.043.989.36 Roof console 1 ea.

⇒ **Damage code WE46 066 000 2**

* For I-no. designations, see ⇒ *Technical Information 'WE4600 Designations of the I-nos.'*

Designations of the I-nos.

Legend:

Garage door opener:

- **VC0:** without garage door opener
- **VC1:** Garage door opener, 433 MHz
- **VC2:** Garage door opener, 315 MHz

Navigation:

- **7Q0:** without navigation system
- **7Q4:** Navigation system preparation, Japan
- **7Q7:** Navigation module, Arabic
- **7T1:** Navigation (off-road)
- **7T4:** Navigation module, China

Parking assistant:

- **7X0:** without parking assistant
- **7X2:** ParkAssist (front and rear)
- **7X8:** ParkAssist and reversing camera
- **7X9:** Reversing camera only

Courtesy lights:

- **9MA:** Standard courtesy lights
- **9MB:** Comfort courtesy lights

Roof insert:

- **3FA:** without roof insert
- **3FE:** Glass slide/tilt roof
- **3FU:** Porsche large roof system (Panorama roof)

Passenger's airbag:

- **4UD:** Passenger's airbag cannot be deactivated
- **4UE:** Passenger's airbag can be deactivated

- **4UQ:** Advanced airbag (automatic deactivation of passenger's airbag if necessary)

Important Notice: Technical Bulletins issued by Porsche Cars North America, Inc. are intended only for use by professional automotive technicians who have attended Porsche service training courses. They are written to inform those technicians of conditions that may occur on some Porsche vehicles, or to provide information that could assist in the proper servicing of a vehicle. Porsche special tools may be necessary in order to perform certain operations identified in these bulletins. Use of tools and procedures other than those Porsche recommends in these bulletins may be detrimental to the safe operation of your vehicle, and may endanger the people working on it. Properly trained Porsche technicians have the equipment, tools, safety instructions, and know-how to do the job properly and safely. If a particular condition is described, do not assume that the bulletin applies to your vehicle, or that your vehicle will have that condition. See your authorized Porsche Dealer for the latest information about whether a particular technical bulletin applies to your vehicle. Part numbers listed in these bulletins are for reference only. Always check with your authorized Porsche dealer to verify the current and correct part numbers. The work procedures updated electronically in the Porsche PIWIS diagnostic and testing device take precedence and, in the event of a discrepancy, the work procedures in the PIWIS Tester are the ones that must be followed.

© Porsche Cars North America, Inc.

Dealership	Service Manager	Shop Foreman	Service Technician
Distribution	Asst. Manager	Warranty Admin.	Service Technician
Routing			

Dr. Ing. h.c. F. Porsche AG is the owner of numerous trademarks, both registered and unregistered, including without limitation the Porsche Crest®, Porsche®, Boxster®, Carrera®, Cayenne®, Cayman®, Macan®, Panamera®, Speedster®, Spyder®, 918 Spyder®, Tiptronic®, VarioCam®, PCM®, PDK®, 911®, RS®, 4S®, FOUR, UNCOMPROMISED®, and the model numbers and the distinctive shapes of the Porsche automobiles such as, the federally registered 911 and Boxster automobiles. The third party trademarks contained herein are the properties of their respective owners. Porsche Cars North America, Inc. believes the specifications to be correct at the time of printing. Specifications, performance standards, standard equipment, options, and other elements shown are subject to change without notice. Some options may be unavailable when a car is built. Some vehicles may be shown with non-U.S. equipment. The information contained herein is for internal authorized Porsche dealer use only and cannot be copied or distributed. Porsche recommends seat belt usage and observance of traffic laws at all times.

Printed in the USA