

WE48 - Re-programming DME Control Unit (Workshop Campaign)

Important: **CRITICAL WARNING** - THIS CAMPAIGN INCLUDES STEPS WHERE SEVERAL CONTROL UNITS IN THE VEHICLE WILL BE PROGRAMMED WITH THE PIWIS TESTER. IT IS CRITICAL THAT THE VEHICLE VOLTAGE BE BETWEEN 13.5 VOLTS AND 14.5 VOLTS DURING THIS PROGRAMMING. OTHERWISE, THE PROGRAMMING COULD FAIL RESULTING IN DAMAGED CONTROL UNITS. CONTROL UNITS DAMAGED BY INADEQUATE VOLTAGE WILL NOT BE COVERED UNDER WARRANTY. THE TECHNICIAN MUST VERIFY THE ACTUAL VEHICLE VOLTAGE IN THE INSTRUMENT CLUSTER OR IN THE PIWIS TESTER BEFORE STARTING THE CAMPAIGN AND ALSO DOCUMENT THE ACTUAL VOLTAGE ON THE REPAIR ORDER. IT IS ALSO ADVISABLE TO MONITOR THE VEHICLE VOLTAGE DURING THE PROGRAMMING VIA THE INSTRUMENT CLUSTER. PLEASE REFER TO EQUIPMENT INFORMATION EQ-1105 FOR A LIST OF SUITABLE BATTERY CHARGERS/POWER SUPPLIES WHICH SHOULD BE USED TO MAINTAIN VEHICLE VOLTAGE.

Model Year: **2015**

Vehicle Type: **Boxster (981)/Cayman (981)**

- Country/Market:
- USA (C02)
 - Canada (C36)

Equipment: 6-speed manual transmission (I-no. 480)

Concerns: **DME control unit**

Information: This is to inform you of a voluntary Workshop Campaign on the above-mentioned vehicles. **The DME control unit on the affected vehicles was programmed using a data record that does not comply with current standards.**

Action Required: Re-program DME control unit.

Affected Vehicles: The VIN(s) can be checked by using PIWIS Vehicle Information link to verify if the campaign affects the vehicle. This campaign is scope specific to the VIN! Failure to verify in PIWIS may result in an improper repair.

This campaign affects only 6 vehicles in North America:

- WPOCA2A87FK110034
- WPOAA2A89FK160005
- WPOAA2A87FK160018
- WPOAA2A87FK160035
- WPOAA2A81FK160080
- WPOAA2A81FK160211

- Tools:
- **9818 - PIWIS Tester II** with PIWIS Tester test software version **14.300** (or higher) installed.
 - **Battery Charger/Power Supply** - Suitable for AGM Type batteries, recommended current rating of 70A fixed voltage 13.5V to 14.5V. Refer to Equipment Information EQ-1105.

Work Procedure: See Attachment "A".

Claim Submission: See Attachment "B".

Attachment "A"

NOTICE

Fault entry in the fault memory and control unit programming aborted due to low voltage.

- Increased current draw during diagnosis or control unit programming can cause a drop in voltage, which can result in one or more fault entries and the abnormal termination of the programming process.
- ⇒ Before starting control unit programming, connect a battery charger or power supply, suitable for AGM type batteries, recommended current rating of 70A fixed voltage 13.5V to 14.5V.

NOTICE

Control unit programming will be aborted if the Internet connection is unstable.

- An unstable Internet connection can interrupt communication between PIWIS Tester II and the vehicle communication module (VCI). As a result, control unit programming may be aborted.
- ⇒ During control unit programming, always connect PIWIS Tester II to the vehicle communication module (VCI) via the USB cable.

NOTICE

Control unit programming will be aborted if the vehicle key is not recognized

- If the vehicle key is not recognized in vehicles with Porsche Entry & Drive, programming cannot be started or will be interrupted.
- ⇒ Switch on the ignition using the original vehicle key. To do this, replace the original vehicle key in the ignition lock with the plastic key fob if it was previously removed at the start of this procedure.

Work Procedure **NOTE:** VEHICLE VOLTAGE MUST REMAIN BETWEEN 13.5 AND 14.5 VOLTS DURING THE ENTIRE WORK PROCEDURE.

- 1 Carry out general preliminary work for control unit programming as described in ⇒ *Workshop Manual '9X00IN Basic instructions and procedure for control unit programming using the PIWIS Tester - section on "Preliminary work"*.

Carrying out control unit programming

Work Procedure: **NOTE:** VEHICLE VOLTAGE MUST REMAIN BETWEEN 13.5 AND 14.5 VOLTS DURING THE ENTIRE WORK PROCEDURE.

1 **Re-program DME control unit.**

The basic procedure for programming a control unit is described in the Workshop Manual - ⇒ *Workshop Manual '9X00IN Basic instructions and procedure for control unit programming using the PIWIS Tester - section on "Programming"*.

Specific information on control unit programming during this campaign:

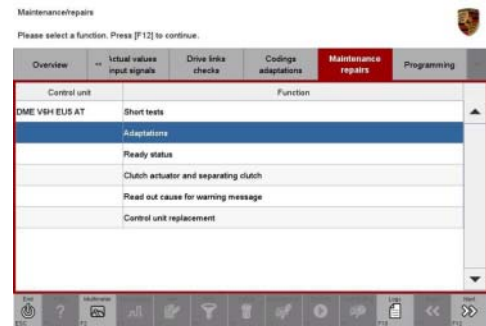
Required PIWIS Tester software version:	14.300 (or higher)
Type of control unit programming:	Control unit programming using the 'Automatic programming' function for the DME control unit. DME control unit > ⇒ 'Programming' menu >> 'Automatic programming' function.
Programming sequence:	Read and follow the information and instructions on the PIWIS Tester during the guided programming sequence. During the programming sequence, the DME control unit is re-programmed and then re-coded automatically . Do not interrupt programming and coding.
Programming time (approx.):	6 minutes
Procedure in the event of error messages appearing during the programming sequence:	⇒ <i>Workshop Manual '9X00IN Basic instructions and procedure for control unit programming using the PIWIS Tester - section on "Troubleshooting"</i> .
Procedure in the event of abnormal termination of control unit programming:	Repeat control unit programming by restarting programming .
Porsche part number 981 618 619 20 (or higher)	

Performing throttle valve adaptation

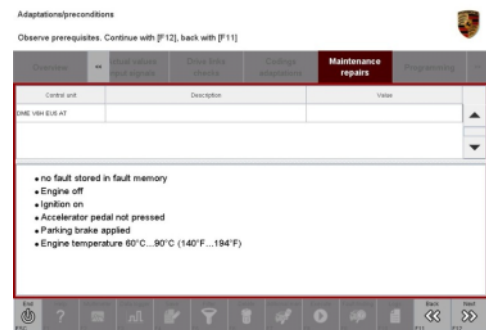
Work Procedure: **NOTE:** VEHICLE VOLTAGE MUST REMAIN BETWEEN 13.5 AND 14.5 VOLTS DURING THE ENTIRE WORK PROCEDURE.

- 1 Select the **'DME'** control unit in the control unit selection screen ('Overview' menu) and press **•>>"** to confirm your selection.
- 2 Once the DME control unit has been found and is displayed in the overview, select the ⇒ **'Maintenance/repairs'** menu.

- Select menu item ⇒ **'Adaptations'** and press •>>" to confirm your selection ⇒ *DME - Adaptations*.

*DME - Adaptations*

- Comply with the displayed preconditions and press •>>" to confirm ⇒ *Adaptation preconditions*.

*Adaptation preconditions*

- Select the ⇒ **'Throttle valve adaptation'** function so that the corresponding text line turns blue and press •F8" to start the throttle valve adaptation ⇒ *Throttle valve adaptation*.

*Throttle valve adaptation*

- Follow the instructions on the PIWIS Tester while throttle valve adaptation is being performed. Once throttle valve adaptation is complete, a tick will appear in the "Value" field on the PIWIS Tester display. If throttle valve adaptation is **not** completed successfully, adaptation must be **repeated**.
- Press •F8" ("Stop") to end throttle valve adaptation.
- Press •<<" to return to the start page of the ⇒ **'Maintenance/repairs'** menu.
- Select the ⇒ **'Overview'** menu and press •<<" to return to the control unit selection screen.

Subsequent work

Work Procedure: **NOTE:** VEHICLE VOLTAGE MUST REMAIN BETWEEN 13.5 AND 14.5 VOLTS DURING THE ENTIRE WORK PROCEDURE.

- 1 Carry out general subsequent work for control unit programming as described in ⇒ *Workshop Manual '9X00IN Basic instructions and procedure for control unit programming using the PIWIS Tester - section on "Subsequent work"*.
- 2 Enter the workshop campaign in the Warranty and Maintenance booklet.

Attachment "B"



Information

The specified working time was determined specifically for carrying out this campaign and includes all required preliminary and subsequent work.

The working time may differ from the working times published in the Labor Operation List in PIWIS.

Claim Submission - Workshop Campaign WE48

Warranty claims should be submitted via WWS/PQIS.

Open campaigns may be checked by using either the PIWIS Vehicle Information system or through PQIS Job Creation.

Labor, parts, and sublet will be automatically inserted when Technician is selected in WWS/PQIS. If necessary, the required part numbers will need to be manually entered into warranty system by the dealer administrator.

Scope:

Working time:		
Re-programming DME control unit		Labor time: 34 TU
Includes:	<ul style="list-style-type: none"> Connecting and disconnecting battery charger Connecting and disconnecting PIWIS Tester Performing throttle valve adaptation 	

Reading out and erasing fault memories

⇒ Damage code WE48 066 000 1

Important Notice: Technical Bulletins issued by Porsche Cars North America, Inc. are intended only for use by professional automotive technicians who have attended Porsche service training courses. They are written to inform those technicians of conditions that may occur on some Porsche vehicles, or to provide information that could assist in the proper servicing of a vehicle. Porsche special tools may be necessary in order to perform certain operations identified in these bulletins. Use of tools and procedures other than those Porsche recommends in these bulletins may be detrimental to the safe operation of your vehicle, and may endanger the people working on it. Properly trained Porsche technicians have the equipment, tools, safety instructions, and know-how to do the job properly and safely. If a particular condition is described, do not assume that the bulletin applies to your vehicle, or that your vehicle will have that condition. See your authorized Porsche Dealer for the latest information about whether a particular technical bulletin applies to your vehicle. Part numbers listed in these bulletins are for reference only. Always check with your authorized Porsche dealer to verify the current and correct part numbers. The work procedures updated electronically in the Porsche PIWIS diagnostic and testing device take precedence and, in the event of a discrepancy, the work procedures in the PIWIS Tester are the ones that must be followed.

© Porsche Cars North America, Inc.

Dealership	Service Manager	Shop Foreman	Service Technician
Distribution	Asst. Manager	Warranty Admin.	Service Technician
Routing			

Dr. Ing. h.c. F. Porsche AG is the owner of numerous trademarks, both registered and unregistered, including without limitation the Porsche Crest®, Porsche®, Boxster®, Carrera®, Cayenne®, Cayman®, Macan®, Panamera®, Speedster®, Spyder®, 918 Spyder®, Tiptronic®, VarioCam®, PCM®, PDK®, 911®, RS®, 4S®, FOUR, UNCOMPROMISED®, and the model numbers and the distinctive shapes of the Porsche automobiles such as, the federally registered 911 and Boxster automobiles. The third party trademarks contained herein are the properties of their respective owners. Porsche Cars North America, Inc. believes the specifications to be correct at the time of printing. Specifications, performance standards, standard equipment, options, and other elements shown are subject to change without notice. Some options may be unavailable when a car is built. Some vehicles may be shown with non-U.S. equipment. The information contained herein is for internal authorized Porsche dealer use only and cannot be copied or distributed. Porsche recommends seat belt usage and observance of traffic laws at all times.

Printed in the USA