

WE26 - Replacing Switching Element for Filler Flap (Workshop Campaign)

Vehicle Type: **Boxster (981)/Boxster S (981)
Cayman (981)/Cayman S (981)
911 Carrera (991)/911 Carrera S (991)
911 Carrera 4 (991)/911 Carrera 4S (991)**

Model Year: **As of 2012 up to 2014**

Concerns: **Switching element for filler flap**

Information: This is to inform you of a voluntary Workshop Campaign on the above-mentioned vehicles. **Defective switching elements for the filler flap may have been installed on the affected vehicles due to a supplier error.**

This can cause the switching element to become mechanically blocked. If this happens, there is no guarantee that the filler flap will open correctly.

Action Required: Replace switching element for filler flap.

Affected Vehicles: The VIN(s) can be checked by using PIWIS Vehicle Information link to verify if the campaign affects the vehicle. This campaign is scope specific to the VIN! Failure to verify in PIWIS may result in an improper repair. This campaign affects 12,426 vehicles in North America.

Work Procedure: See Attachment "A".

Claim Submission: See Attachment "B".

Parts Info: **NOTE: DO NOT ORDER PARTS. THEY WILL BE AUTOMATICALLY ALLOCATED FOR UP TO 50% OF THE VEHICLES THAT ARE SERVICED AT YOUR DEALERSHIP. ONCE YOUR DEALERSHIP IS OUT OF STOCK AND REQUIRES ADDITIONAL PARTS, YOU SHOULD SUBMIT A PTEC/PAV.**

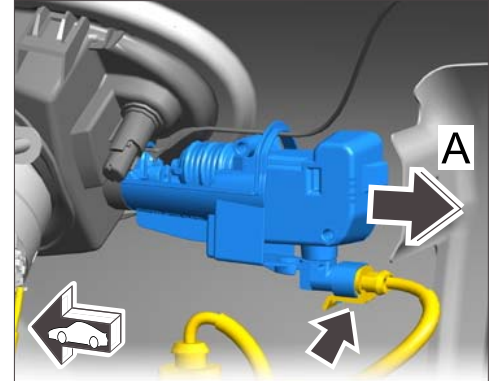
Part No.	Designation	Qty.
000.043.303.46	⇒ Filler flap actuator	1 ea.

Attachment "A": **Work Procedure**

- Preliminary work**

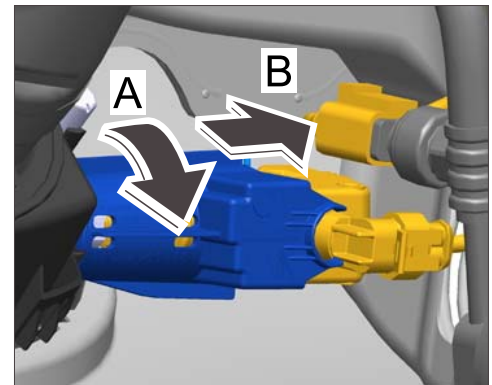
- 1.1 Remove right front wheel ⇒ *Workshop Manual '440519 Removing and installing wheel - section on "Removing"*.
 - 1.2 Remove rear part of front wheel housing liner at the right ⇒ *Workshop Manual '505619 Removing and installing front wheel housing liner - section on "Removing"*.
- 2 **Remove switching element for filler flap.**

- 2.1 Release electric plug connection on switching element for filler flap ⇒ *Disconnecting electric plug connection -arrow-* and disconnect it ⇒ *Disconnecting electric plug connection -arrow A-*.



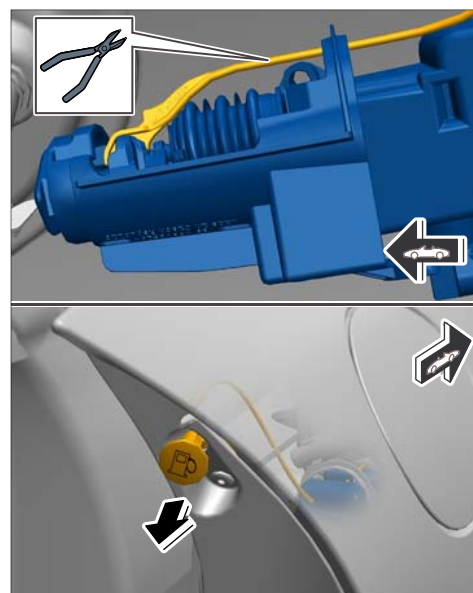
Disconnecting electric plug connection

- 2.2 Turn switching element for filler flap 90° counter-clockwise ⇒ *Removing switching element for filler flap -arrow A-* until the switching element is released.
- 2.3 Pull out switching element for filler flap ⇒ *Removing switching element for filler flap -arrow B-*.



Removing switching element for filler flap

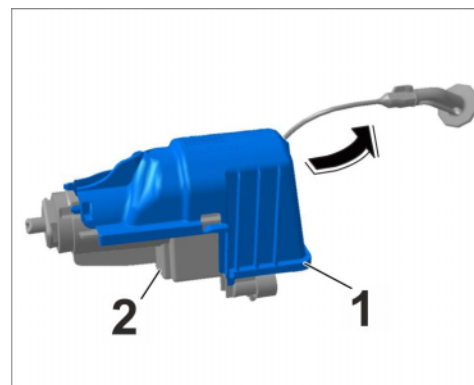
- 2.4 Cut emergency release cable using side cutters ⇒ *Cutting emergency release cable.*
- 2.5 Open the doors on the right-hand side of the vehicle.
- 2.6 Pull emergency release cable out of the side-section trim ⇒ *Cutting emergency release cable -arrow-* and dispose of it.



Cutting emergency release cable

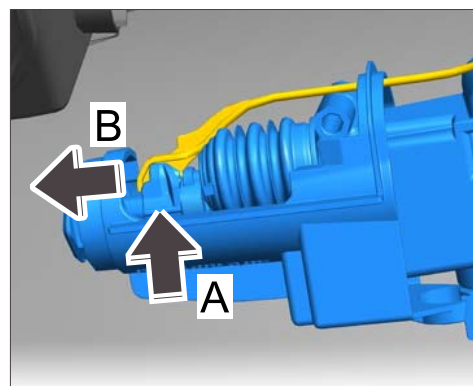
3 Install new filler flap switching element, Porsche Part No. 000.043.303.46.

- 3.1 Unclip protective cover ⇒ *Unclipping protective cover -1-* on the new filler flap switching element ⇒ *Unclipping protective cover -2-* (⇒ *Unclipping protective cover -arrow-*).



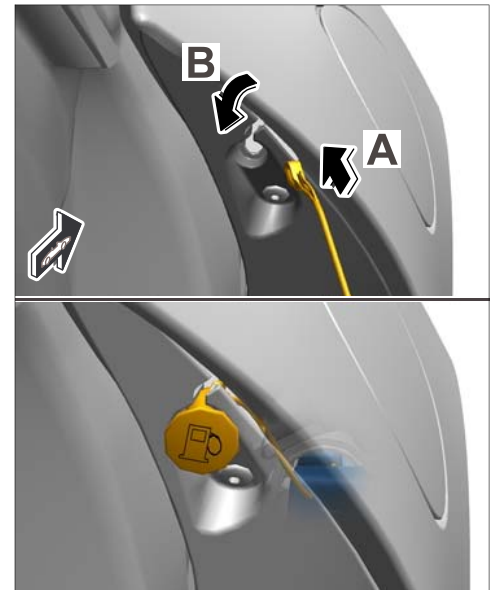
Unclipping protective cover

- 3.2 Block the servo motor axle with your hand ⇒ *Disengaging emergency release cable -arrow A-* and press the new emergency release cable forward out of the guide using a screwdriver ⇒ *Disengaging emergency release cable -arrow B-*.



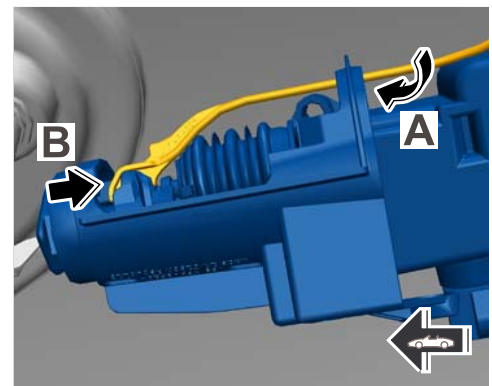
Disengaging emergency release cable

- 3.3 Guide the end of the emergency release cable that you removed earlier in between the fender and side-section trim ⇒ *Installing emergency release cable -arrow A-* and push it in through the cut-out towards the wheel housing ⇒ *Installing emergency release cable -arrow B-*.



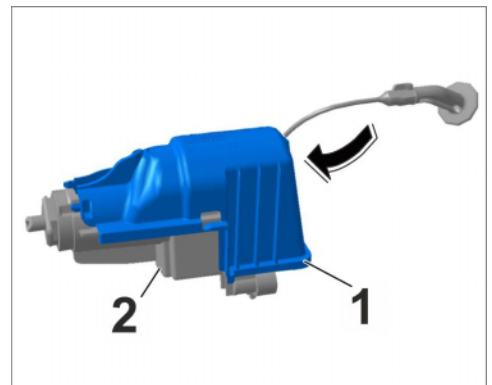
Installing emergency release cable

- 3.4 Guide emergency release cable in the wheel housing in through the switching element ⇒ *Engaging emergency release cable -arrow A-* and engage it in the servo motor axle ⇒ *Engaging emergency release cable -arrow B-*.



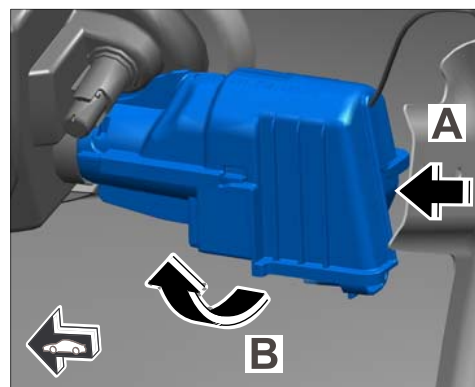
Engaging emergency release cable

- 3.5 Position protective cover ⇒ *Fitting protective cover -1-* on the switching element ⇒ *Fitting protective cover -2-* (⇒ *Fitting protective cover -arrow-*) and then engage it at the sides.



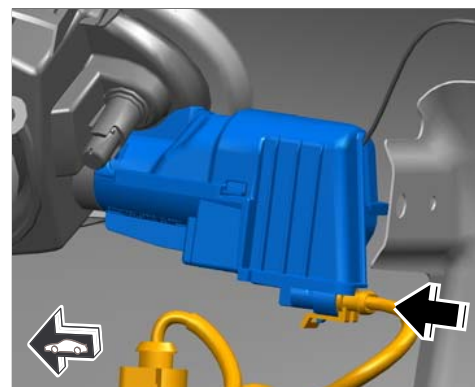
Fitting protective cover

- 3.6 Insert switching element for filler flap into the inner part of the filler flap ⇒ *Inserting switching element -arrow A-* and turn it 90° clockwise ⇒ *Inserting switching element -arrow B-* until the switching element engages securely.



Inserting switching element

- 3.7 Plug in electric plug connection on the filler flap switching element ⇒ *Locking plug connection -arrow-* until the plug connection engages securely.



Locking plug connection



Information

Before installing the wheel housing liner, carry out a function test on the filler flap:

- Lock the vehicle.
- Check whether the filler flap switching element locks when the vehicle is locked.
- Unlock the vehicle.
- Check whether the filler flap can be opened when the vehicle is unlocked.

4 Subsequent work

- 4.1 Install rear part of front wheel housing liner at the right ⇒ *Workshop Manual '505619 Removing and installing front wheel housing liner - section on "Installing"*.
- 4.2 Fit right front wheel ⇒ *Workshop Manual '440519 Removing and installing wheel - section on "Installing"*.

- 5 Enter the workshop campaign in the Warranty and Maintenance booklet.

Attachment "B": **Claim Submission** - Workshop Campaign WE26
 Warranty claims should be submitted via WWS/PQIS.
 Open campaigns may be checked by using either the PIWIS Vehicle Information system or through PQIS Job Creation.

Labor, parts, and sublet will be automatically inserted when Technician is selected in WWS/PQIS. If necessary, the required part numbers will need to be manually entered into warranty system by the dealer administrator.



Information

The specified working time was determined specifically for carrying out this campaign and may differ from the working time published in the Labor Operation List in PIWIS.

Working time:

Replacing switching element for filler flap

Labor time: **44 TU**

- Includes:
- Removing and installing right front wheel
 - Removing and installing rear part of front wheel housing liner at the right
 - Removing and installing switching element for filler flap

Parts required:

000.043.303.46 Filler flap actuator 1 ea.

⇒ **Damage code WE26 066 000 2**

- References:
- ⇒ *Workshop Manual '440519 Removing and installing wheel'*
 - ⇒ *Workshop Manual '505619 Removing and installing front wheel housing liner'*

Important Notice: Technical Bulletins issued by Porsche Cars North America, Inc. are intended only for use by professional automotive technicians who have attended Porsche service training courses. They are written to inform those technicians of conditions that may occur on some Porsche vehicles, or to provide information that could assist in the proper servicing of a vehicle. Porsche special tools may be necessary in order to perform certain operations identified in these bulletins. Use of tools and procedures other than those Porsche recommends in these bulletins may be detrimental to the safe operation of your vehicle, and may endanger the people working on it. Properly trained Porsche technicians have the equipment, tools, safety instructions, and know-how to do the job properly and safely. If a particular condition is described, do not assume that the bulletin applies to your vehicle, or that your vehicle will have that condition. See your authorized Porsche Dealer for the latest information about whether a particular technical bulletin applies to your vehicle. Part numbers listed in these bulletins are for reference only. Always check with your authorized Porsche dealer to verify the current and correct part numbers. The work procedures updated electronically in the Porsche PIWIS diagnostic and testing device take precedence and, in the event of a discrepancy, the work procedures in the PIWIS Tester are the ones that must be followed.

© Porsche Cars North America, Inc.

Dealership	Service Manager	Shop Foreman	Service Technician
Distribution			
Routing	Asst. Manager	Warranty Admin.	Service Technician

Dr. Ing. h.c. F. Porsche AG is the owner of numerous trademarks, both registered and unregistered, including without limitation the Porsche Crest®, Porsche®, Boxster®, Carrera®, Cayenne®, Cayman®, Macan®, Panamera®, Speedster®, Spyder®, 918 Spyder®, Tiptronic®, VarioCam®, PCM®, PDK®, 911®, RS®, 4S®, FOUR, UNCOMPROMISED®, and the model numbers and the distinctive shapes of the Porsche automobiles such as, the federally registered 911 and Boxster automobiles. The third party trademarks contained herein are the properties of their respective owners. Porsche Cars North America, Inc. believes the specifications to be correct at the time of printing. Specifications, performance standards, standard equipment, options, and other elements shown are subject to change without notice. Some options may be unavailable when a car is built. Some vehicles may be shown with non-U.S. equipment. The information contained herein is for internal authorized Porsche dealer use only and cannot be copied or distributed. Porsche recommends seat belt usage and observance of traffic laws at all times.

Printed in the USA