

**Crankcase/Pistons/Piston Rings Need To Be Replaced - Mixed Installation Is Not Approved (25/13)**

Revision: This bulletin replaces bulletin Group 1, #25/13, dated June 11, 2013.  
Section "Information — Spare Parts Requirements" for pistons and piston rings:  
Text changed to "**now available again**".

Model Year: **As of 2008**

Vehicle Type: **Cayenne S (9PA)/Cayenne Turbo (9PA)/Cayenne Turbo S (9PA)**  
**Cayenne S (92A)/Cayenne Turbo (92A)**  
**Panamera/Panamera S/Panamera Turbo/Panamera Turbo S**

Concerns: **Cylinder liner in crankcase**

Information: **If piston rings/pistons or the crankcase need to be replaced, a mixed installation can damage the cylinder liner.**

**NOTICE**

**Combination of piston rings and crankcase.**

- Risk of damage to cylinder liner.
- ⇒ **Observe specifications for permissible combinations.**

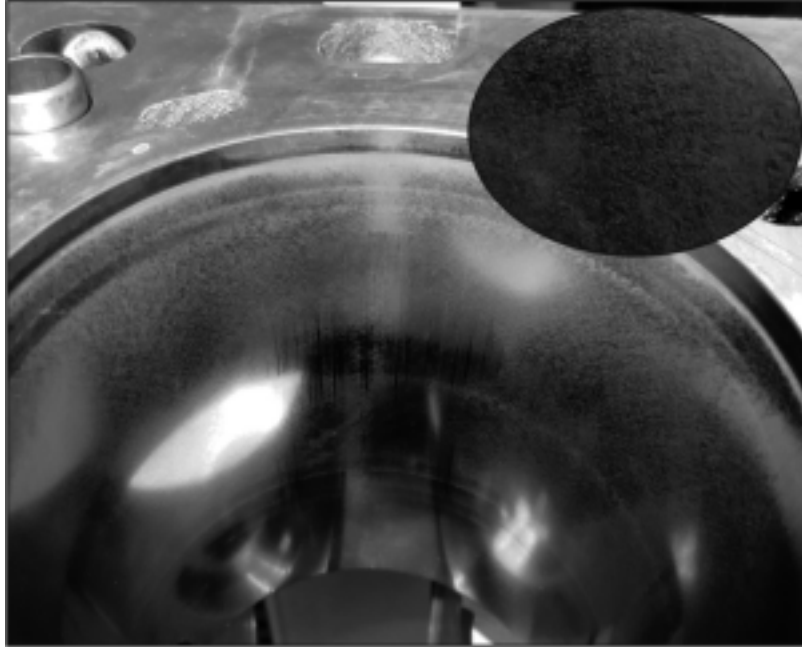
Due to

- **modified production methods** during the manufacture of the crankcase ⇒ from **smooth honing to structural honing**
- and the use of a **different coating on the piston rings** (now DLC-coated)

only the **combinations specified below are permitted.**

⇒ Before carrying out any other work, check whether the cylinder liners are smooth-honed or structurally honed:

A) Cylinder liners are smooth-honed ( $\Rightarrow$  *Figure 1*, old - crankcase no longer available)



*Figure 1*

• **Spare parts requirements:** One or more pistons and piston rings (old type without DLC coating - **now available again**)

$\Rightarrow$  All pistons with piston rings can be replaced as needed.

• **Spare parts requirements:** Crankcase (old type, smooth-honed - no longer available)

$\Rightarrow$  All pistons with piston rings and the crankcase must be replaced with new components.

B) Cylinder liners are structurally honed ( $\Rightarrow$  *Figure 2*, new type)

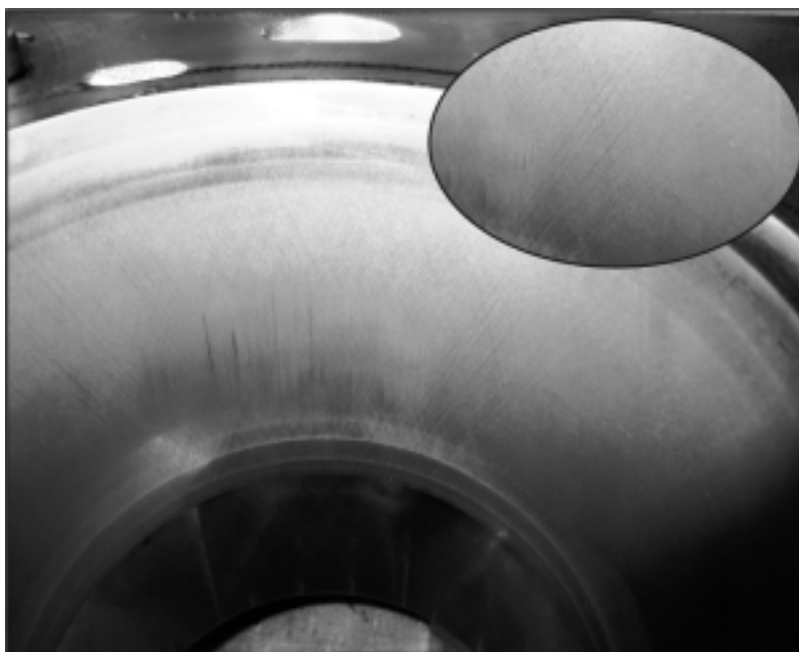


Figure 2

• **Spare parts requirements:** One or more pistons and piston rings  
⇒ **Only replace the required piston(s).**

• **Spare parts requirements:** Crankcase  
⇒ **Only replace the crankcase.**

Date of Introduction:

Only engines with structurally honed cylinder liners are used in vehicles as of the following engine numbers:

Vehicle type:	Engine type:	Engine number
Panamera	M4620	VC08746
Panamera 4	M4640	VC08729
Panamera S	M4820	C02097
Panamera 4S	M4840	C03992
Panamera Turbo Panamera Turbo S	M4870	C03303
Panamera GTS	M4840G	D01925
Cayenne S	M4802	C12137
Cayenne Turbo	M4852	C05372

- References:
- ⇒ *Workshop Manual '101055 Replacing crankcase'*
  - ⇒ *Workshop Manual '131020 Removing and installing pistons'*
  - ⇒ *Workshop Manual '131037 Disassembling and assembling pistons'*

**Important Notice:** Technical Bulletins issued by Porsche Cars North America, Inc. are intended only for use by professional automotive technicians who have attended Porsche service training courses. They are written to inform those technicians of conditions that may occur on some Porsche vehicles, or to provide information that could assist in the proper servicing of a vehicle. Porsche special tools may be necessary in order to perform certain operations identified in these bulletins. Use of tools and procedures other than those Porsche recommends in these bulletins may be detrimental to the safe operation of your vehicle, and may endanger the people working on it. Properly trained Porsche technicians have the equipment, tools, safety instructions, and know-how to do the job properly and safely. If a particular condition is described, do not assume that the bulletin applies to your vehicle, or that your vehicle will have that condition. See your authorized Porsche Dealer for the latest information about whether a particular technical bulletin applies to your vehicle. Part numbers listed in these bulletins are for reference only. Always check with your authorized Porsche dealer to verify the current and correct part numbers. The work procedures updated electronically in the Porsche PIWIS diagnostic and testing device take precedence and, in the event of a discrepancy, the work procedures in the PIWIS Tester are the ones that must be followed.

© Porsche Cars North America, Inc.

Dealership	Service Manager	Shop Foreman	Service Technician
Distribution			
Routing	Asst. Manager	Warranty Admin.	Service Technician

Dr. Ing. h.c. F. Porsche AG is the owner of numerous trademarks, both registered and unregistered, including without limitation the Porsche Crest®, Porsche®, Boxster®, Carrera®, Cayenne®, Cayman®, Macan®, Panamera®, Speedster®, Spyder®, 918 Spyder®, Tiptronic®, VarioCam®, PCM®, PDK®, 911®, RS®, 4S®, FOUR, UNCOMPROMISED®, and the model numbers and the distinctive shapes of the Porsche automobiles such as, the federally registered 911 and Boxster automobiles. The third party trademarks contained herein are the properties of their respective owners. Porsche Cars North America, Inc. believes the specifications to be correct at the time of printing. Specifications, performance standards, standard equipment, options, and other elements shown are subject to change without notice. Some options may be unavailable when a car is built. Some vehicles may be shown with non-U.S. equipment. The information contained herein is for internal authorized Porsche dealer use only and cannot be copied or distributed. Porsche recommends seat belt usage and observance of traffic laws at all times.

Printed in the USA