

|               |                |
|---------------|----------------|
| Group:        | 22-Fuel System |
| Bulletin No.: | SB-14-010      |
| Issue Date:   | 07-10-2014     |

# TECHNICAL SERVICE BULLETIN

## 2012MY-14MY COE FUEL TANK BREATHER CLOGGED

### OVERVIEW

Vehicles equipped with a factory installed, side mounted round fuel tank may exhibit a clogged fuel tank breather from dirt and road debris. A clogged button style breather may cause serious engine damage. In the event that a clogged button style breather is found, a newly designed fuel tank breather has been released to prevent recurrence of this condition.

**NOTE:** This procedure is provided as technical information and is not an authorization for a warranty repair.

### SUBJECT VEHICLES

2012MY – 2014MY Hino COE 195 trucks that were assembled at the Hamura, Japan assembly plant

### BEFORE YOU BEGIN:

- Read and understand all instructions and procedures before you begin the work.
- Read and follow all WARNINGS and NOTICES set forth in this publication. These alerts help to avoid damage to components, serious personal injury, or both.
- Park the vehicle on a flat, level and solid surface.
- Place the gear shift lever in "Neutral" or "Park".
- Apply the parking brake firmly and confirm parking brake activation.
- Turn off the engine and remove the key from the ignition switch.
- Always wear safety glasses or goggles to protect your eyes.

Place wheel chocks in front of and behind all the wheels to prevent the vehicle from moving.

### PARTS

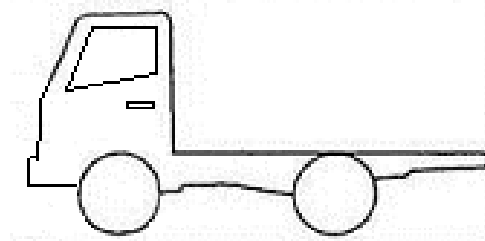
| PART NUMBER | DESCRIPTION        | QUANTITY |
|-------------|--------------------|----------|
| 77018-37190 | Fuel Tank Breather | 1        |
| 95333-06060 | Vent Hose          | 1        |
| S8271-11550 | Hose Clip          | 1        |
| 447A0-37010 | Hose Clip          | 1        |

|               |                |
|---------------|----------------|
| Group:        | 22-Fuel System |
| Bulletin No.: | SB-14-010      |
| Issue Date:   | 07-10-2014     |

# TECHNICAL SERVICE BULLETIN

## VEHICLE PREPERATION:

1. Park the vehicle on level ground.



2. Confirm the engine is stopped, the ignition switch in the off (LOCK) position and the key is removed.



3. Apply the parking brake.



|               |                |
|---------------|----------------|
| Group:        | 22-Fuel System |
| Bulletin No.: | SB-14-010      |
| Issue Date:   | 07-10-2014     |

# TECHNICAL SERVICE BULLETIN

4. Chock the front wheels.



## REPAIR PROCEDURE

1. If the vehicle has a side mounted fuel tank, inspect for a clogged button style breather. If the breather, as shown in the bottom photograph, is clogged with road debris, proceed to step 2, below.



Clogged With Debris

|               |                |
|---------------|----------------|
| Group:        | 22-Fuel System |
| Bulletin No.: | SB-14-010      |
| Issue Date:   | 07-10-2014     |

## TECHNICAL SERVICE BULLETIN

2. Remove and discard the original button style fuel tank breather.

**NOTICE:** Clean the area around the fuel tank breather prior to removing the breather to prevent debris from entering the fuel tank.



3. Wrap the threads of the new fuel tank breather (77018-37190) with Teflon tape. Wrap the tape around the threads up to 5 times. Install the new fuel tank breather into the fuel tank. The tip of the hose fitting on the fuel tank breather must be installed to the correct position. Refer to the photograph which shows the tip of the hose fitting facing the frame rail in the installed position. Tighten the breather within the specified torque range while ensuring that the hose fitting faces the correct direction.



**Specified Torque:** 3-11 lb-ft (4-15 Nm)

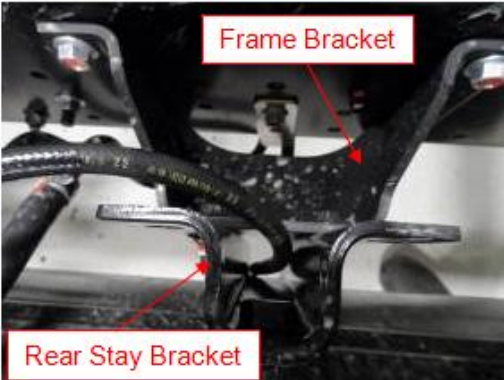
|               |                |
|---------------|----------------|
| Group:        | 22-Fuel System |
| Bulletin No.: | SB-14-010      |
| Issue Date:   | 07-10-2014     |

# TECHNICAL SERVICE BULLETIN

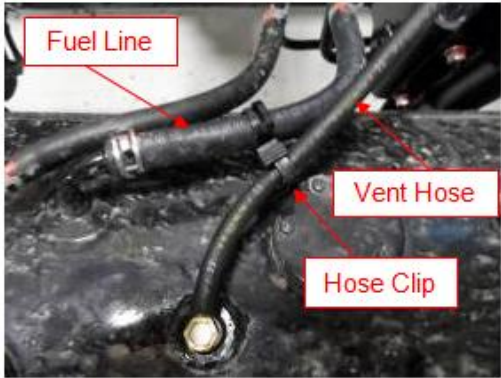
4. Cut the vent hose (95333-06060) to a 20.5 inch (520mm) length. The end of the hose should be cut straight.



5. Connect one end of the vent hose to the hose fitting on the fuel tank breather. Insert the other end of the vent hose behind the rear stay bracket of the fuel tank so it hangs down into the cavity between the stay bracket and the fuel tank frame bracket.



6. Install the larger end of the double hose clip (447A0-37010) onto the fuel line that faces the rear of the vehicle. Secure the vent hose with the small end of the double hose clip as shown in the photograph.



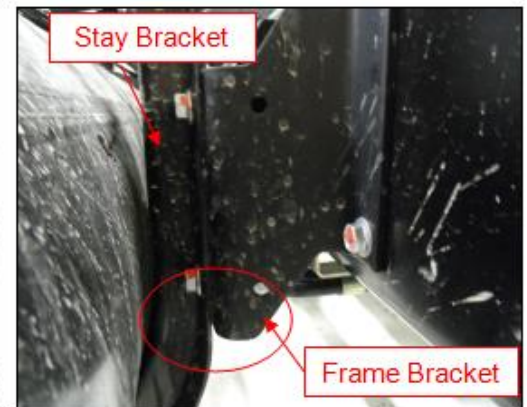
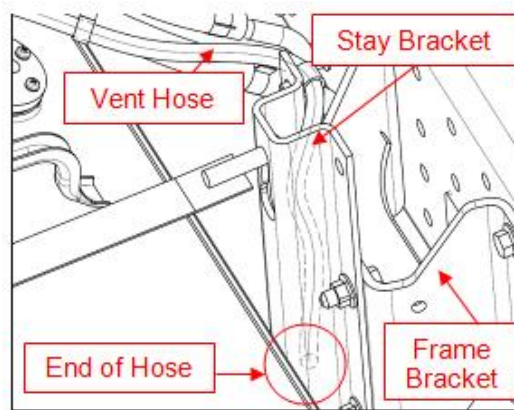
|               |                |
|---------------|----------------|
| Group:        | 22-Fuel System |
| Bulletin No.: | SB-14-010      |
| Issue Date:   | 07-10-2014     |

## TECHNICAL SERVICE BULLETIN

7. Secure the vent hose using the single hose clip (S8271-11550). Insert the hose clip into the back side of the fuel tank stay bracket as shown in the photograph.



8. Verify that the end of the vent hose does not hang down below the bottom edge of the fuel tank frame bracket. The end of the hose should terminate within the stay bracket. Adjust the hose as needed within the clamps if the hose hangs down below the bottom edge of the frame bracket. Proceed to the Final Inspection Procedure, below.



### **FINAL INSPECTION PROCEDURE:**

- To complete this Technical Service Bulletin, review the bulletin and confirm the following:
  - The breather has been installed as outlined within this bulletin.
  - The hose clips are secure and have been installed in the correct position.
  - The vent hose is not interfering with any sharp edges on the frame or body.
  - The end of the vent hose does not hang down below the bottom edge of the fuel tank frame bracket.

|               |                |
|---------------|----------------|
| Group:        | 22-Fuel System |
| Bulletin No.: | SB-14-010      |
| Issue Date:   | 07-10-2014     |

# TECHNICAL SERVICE BULLETIN

---

**CLAIM APPLICATION:**

*\* Reimbursable in accordance within the terms and policies of the Hino Truck limited warranties.*

- a) Labor charge: 0.5 hours
- b) Warranty code: 12119
- c) Trouble code: 74
- d) Operation code: 12150AOT
- e) Original part number: 770183180