



File in Section: -

Bulletin No.: P11338

Date: October, 2014

Service Bulletin

PRELIMINARY INFORMATION

Subject: Front Doors Hard to Open in Cold Temperatures

Models: 2015 Cadillac Escalade Models
2014-2015 Chevrolet Silverado 1500
2015 Chevrolet Suburban, Tahoe
2014-2015 GMC Sierra 1500
2015 GMC Yukon Models

Condition/Concern

Some customers may comment during cold temperatures that the front doors will not open fully and/or are difficult to open.

This may be caused by ice buildup behind the front door hinges.

Recommendation/Instructions

After verifying ice buildup in either the driver's and/or passenger's door jamb area, installation of a closed cell foam should be performed on the right and left side of the body to divert water from entering into this area.



Note: Water enters into this location as shown above.

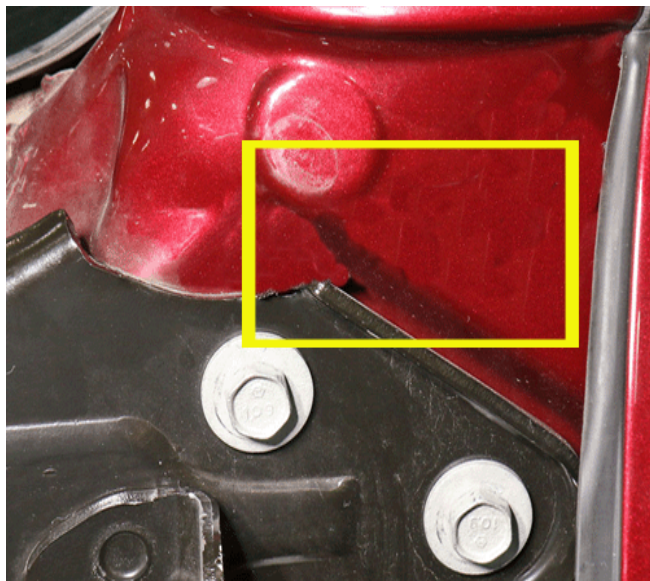
3975698

Follow these instructions below:

1. Open the front doors and remove any ice buildup.

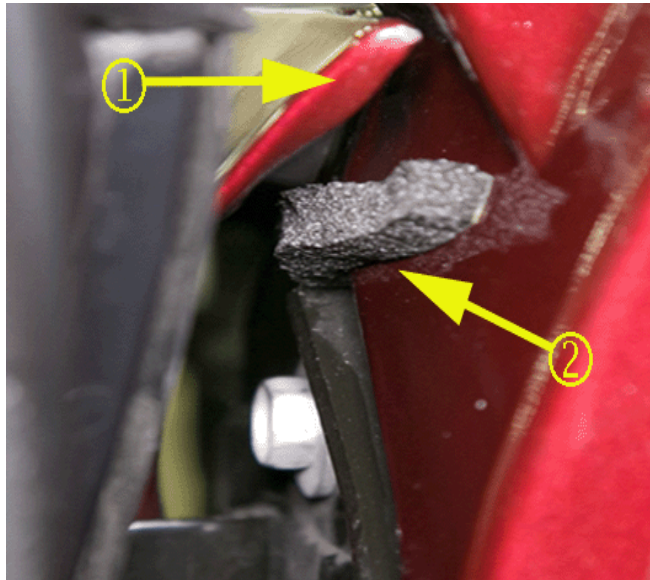


3982073



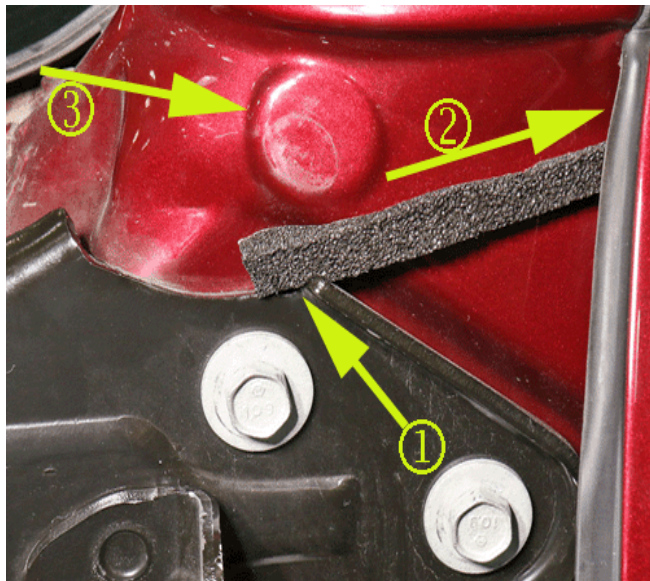
3982074

2. Clean the area with an alcohol prep wipe and allow to dry before installing foam.
3. Cut 75 mm (2.95 in) in length from the 3M™ Vinyl Foam Tape 4504 or equivalent.



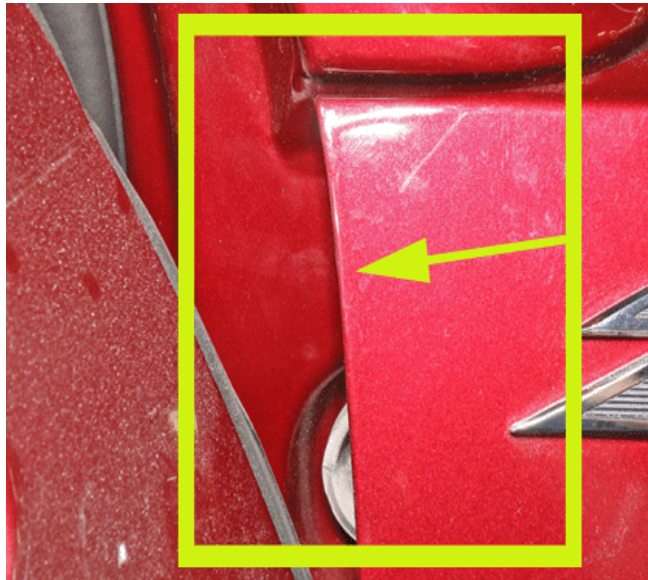
3987527

Note: In this procedure the front fenders (1) do NOT need to be removed to install the foam (2).



3982093

4. Install the 3M™ Vinyl Foam Tape 4504 or equivalent to the left and right side of the body.
 - Ensure the foam contacts the front fender upper bracket (1) as shown above.
 - The foam must be installed in an upward angle (2), front to rear, as shown above.
 - The foam must stay below the form (3) as shown above.



3982096

5. Verify the foam is not visible from the outside of the vehicle.

Parts Information

For product ordering information, call a local automotive equipment supplier or call toll free 1-888-3M HELPS (1-888-364-3577).

| Part Number | Description | Material Allowance |
|---|---------------------------------------|--|
| 3M™ 4504* | Vinyl Foam Tape, 3/8 x 18 yd per roll | \$0.18 per vehicle (\$0.26 per vehicle in Canada) |
| *There is enough material to do approximately 219 vehicles per roll. Store the remaining material for future use. | | |

Warranty Information

For vehicles repaired under warranty, use:

| Labor Operation | Description | Labor Time |
|--|--|------------|
| 1480378* | Install Foam To The Body – Door Openings | 0.3 hr |
| *This is a unique Labor Operation for Bulletin use only. It will not be published in the Labor Time Guide. | | |