



# Service Bulletin

## PRELIMINARY INFORMATION

**Subject:** Wind Whistle Noise At Highway Speed

**Models:** 2015 Chevrolet Tahoe, Suburban  
With Base Grille (without RPO Y91 or BPH)

The following diagnosis might be helpful if the vehicle exhibits the symptom(s) described in this PI.

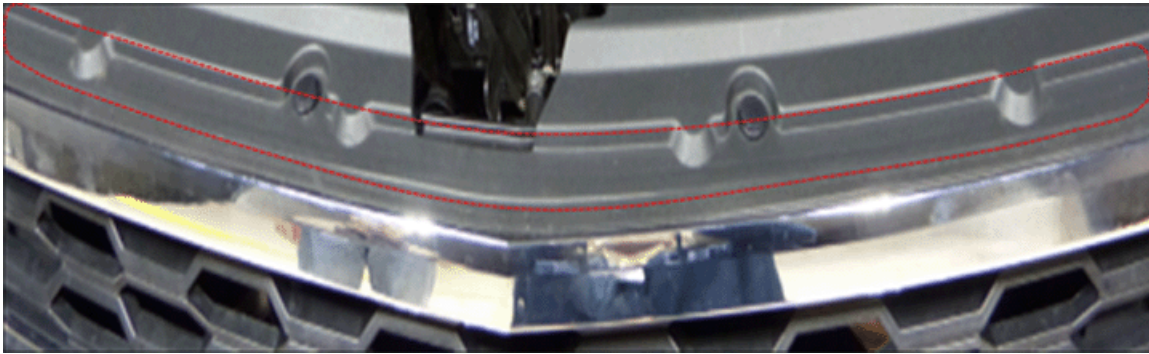
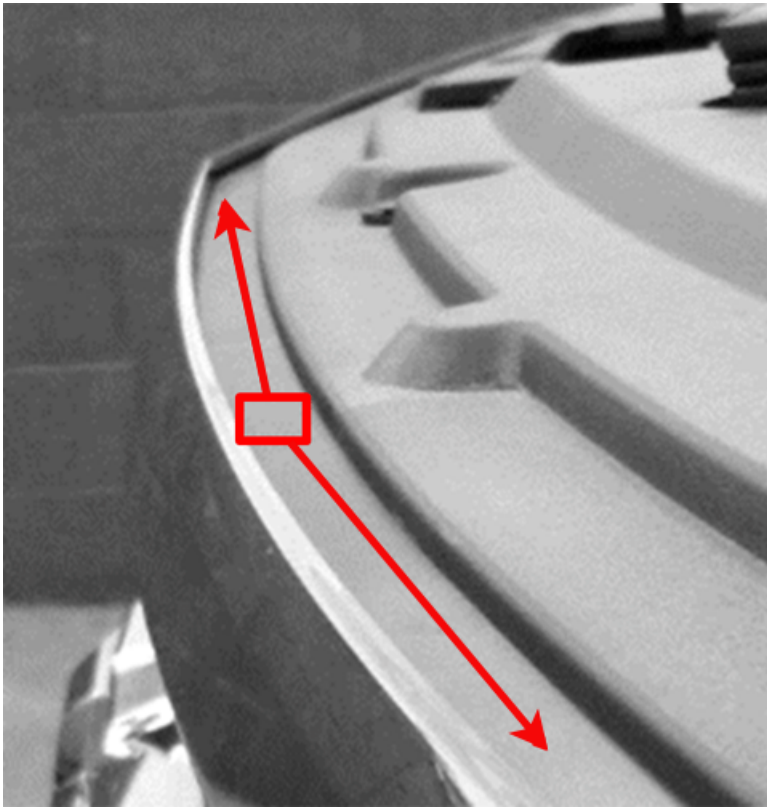
### Condition/Concern

Some owners may comment of a wind whistle noise from the front end while driving at highway speeds. This concern may be more noticeable if there is a head wind or a strong cross wind. This concern could be caused by air whistling through the gap between the front compartment sight shield and the top of the grille, see below.



### Recommendation/Instructions

To root cause, tape the front of the hood to the top of the chrome on the Grille all the way from the left hand side to the right hand side. If the whistle is eliminated, install a foam strip (Kent Part Number P40125) in the recess between the chrome surround of the grille and the sight shield as shown below.



### Parts Information

Part Number	Description	Qty	Material Allowance
**P40125	Kent® Adhesive-Back Shim Stock 1/2" Wide x 5/16" Thick x 30' (This is enough material for five vehicles)	1	\$15.00
<p>**This is a Kent Automotive Part Number. We believe the source and their products to be reliable. There may be additional manufacturers of such products/materials. General Motors does not endorse, indicate any preference for, or assume any responsibility for the products or material from this firm or for any such items that may be available from other sources.</p>			

### Warranty Information

For vehicles repaired under warranty use:

Labor Operation	Description	Labor Time
1480258*	Install Foam Strip and Road Test	1.0 hr
<p>* This is an unique labor operation for bulletin use only. This will not be published in the Labor Time Guide.</p>		

Please follow this diagnostic or repair process thoroughly and complete each step. If the condition exhibited is resolved without completing every step, the remaining steps do not need to be performed.

---

GM bulletins are intended for use by professional technicians, NOT a "do-it-yourselfer". They are written to inform these technicians of conditions that may occur on some vehicles, or to provide information that could assist in the proper service of a vehicle. Properly trained technicians have the equipment, tools, safety instructions, and know-how to do a job properly and safely. If a condition is described, DO NOT assume that the bulletin applies to your vehicle, or that your vehicle will have that condition. See your GM dealer for information on whether your vehicle may benefit from the information.



WE SUPPORT VOLUNTARY TECHNICIAN CERTIFICATION