

# DRAIN PLUG REMOVAL



Prepared by:

**Nic Rucker**  
**Field Service Technical Rep.**  
**256-499-5433**

Approved by:

**Dan Allen – Chief Engineer**

Property name and Top bus number: **DART 304000 39001**  
**304500 39002 – 39155**  
**306000 38001**  
**306500 38002 – 38030**

Issue: Water not being allowed to drain out of the tubes through the water management system

Reason/ cause: frame plugs are in the drain holes

Solution: remove all the bottom facing frame plugs on the understructure of the bus

# DRAIN PLUG REMOVAL



Number of buses affected:      **DART**   **304000**   **39001**  
   **304500**   **39002 – 39155**  
   **306000**   **38001**  
   **306500**   **38002 – 38030**

Estimate repair hours/bus:   30 min

Engineering Documentation:   DEV 13-192

Necessary parts:                N/A

Necessary tools:                needle-nose pliers

# DRAIN PLUG REMOVAL



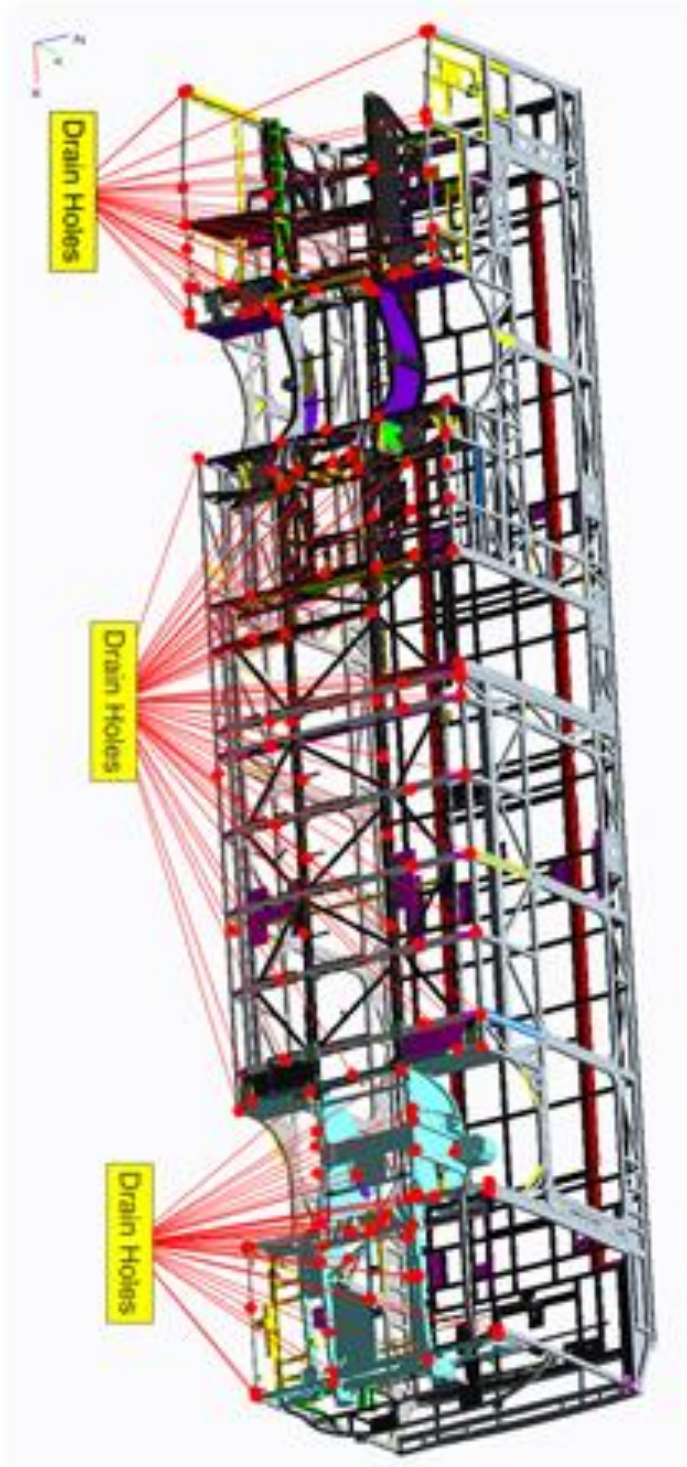
**SAFETY PRECAUTIONS MUST BE FOLLOWED ACCORDING TO ACCEPTED INDUSTRY STANDARDS AND LOCAL/PROPERTY REQUIREMENTS.**

1. Put bus in the air following all shop safety precautions
2. Remove all downward facing frame plugs (see pictures attached for locations)



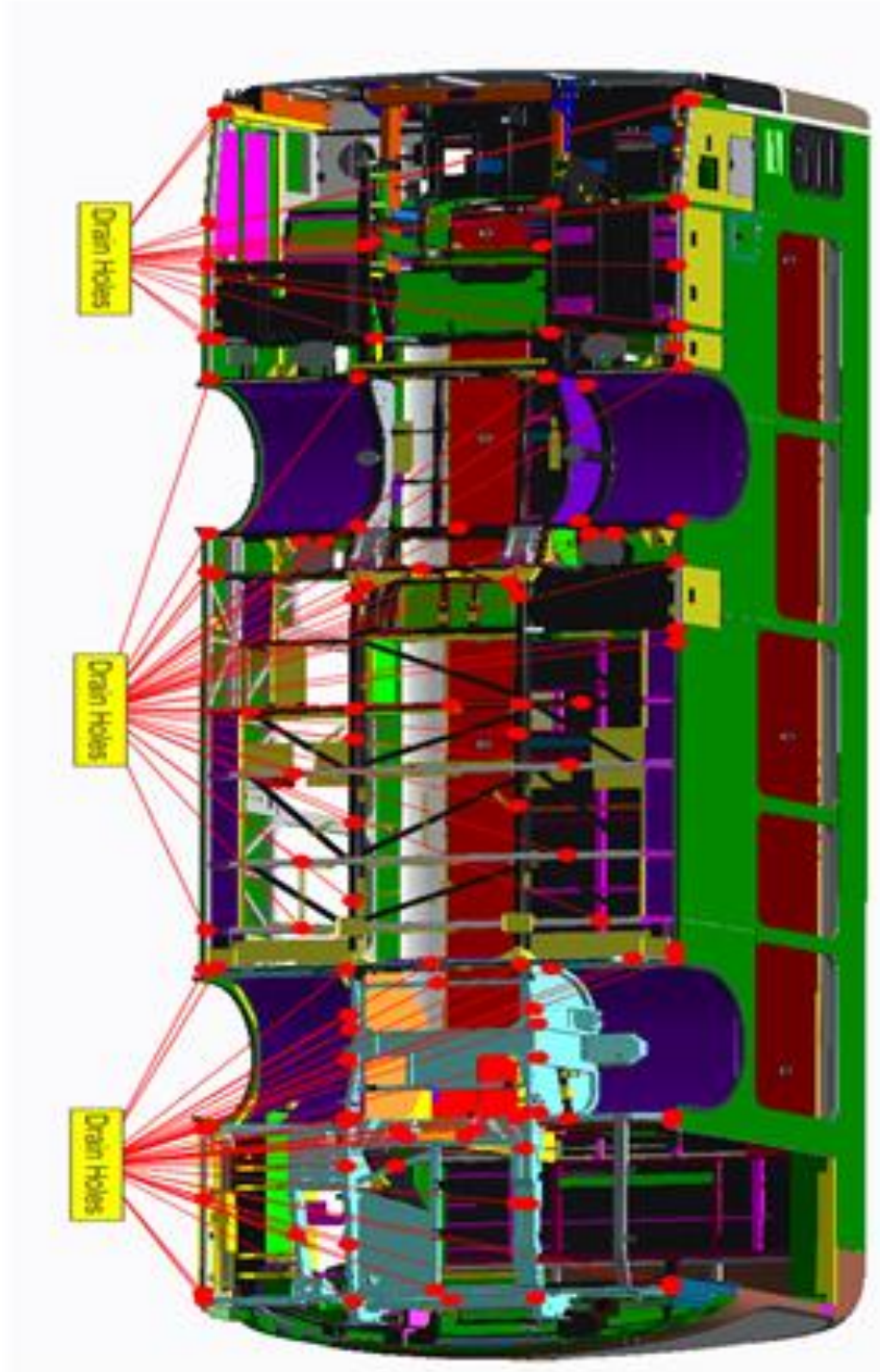
3. Mark the drain holes that have water coming out
4. 140 for 40' and 110 for 31'
5. Check for completeness of work.
6. Lower bus using shop safety precautions
7. Remove all tools from working area.

# DRAIN PLUG REMOVAL



## DART 40' LFW Drain Holes

# DRAIN PLUG REMOVAL



Location of drain plugs to be removed on DART 31' buses.