

NJT: Tube cavity - protection underbody



Prepared by:

Dave Hancock
Senior Field Service Representative
862-241-8959

Approved by:

Dan Allen – Chief Engineer

Property name and Top bus number: NJT 305000



NJT: Tube cavity - protection underbody



Number of buses affected: NJT 305000 – 1601 thru 1639

Estimate repair hours/bus: 3 hrs. per bus

Engineering Documentation: 311-6092-000

Necessary parts: 10A-8607-001 Corrosion inhibitor, LPS Procyon as needed
02128(LPS PN) Moisture displacer, LPS-2 as needed

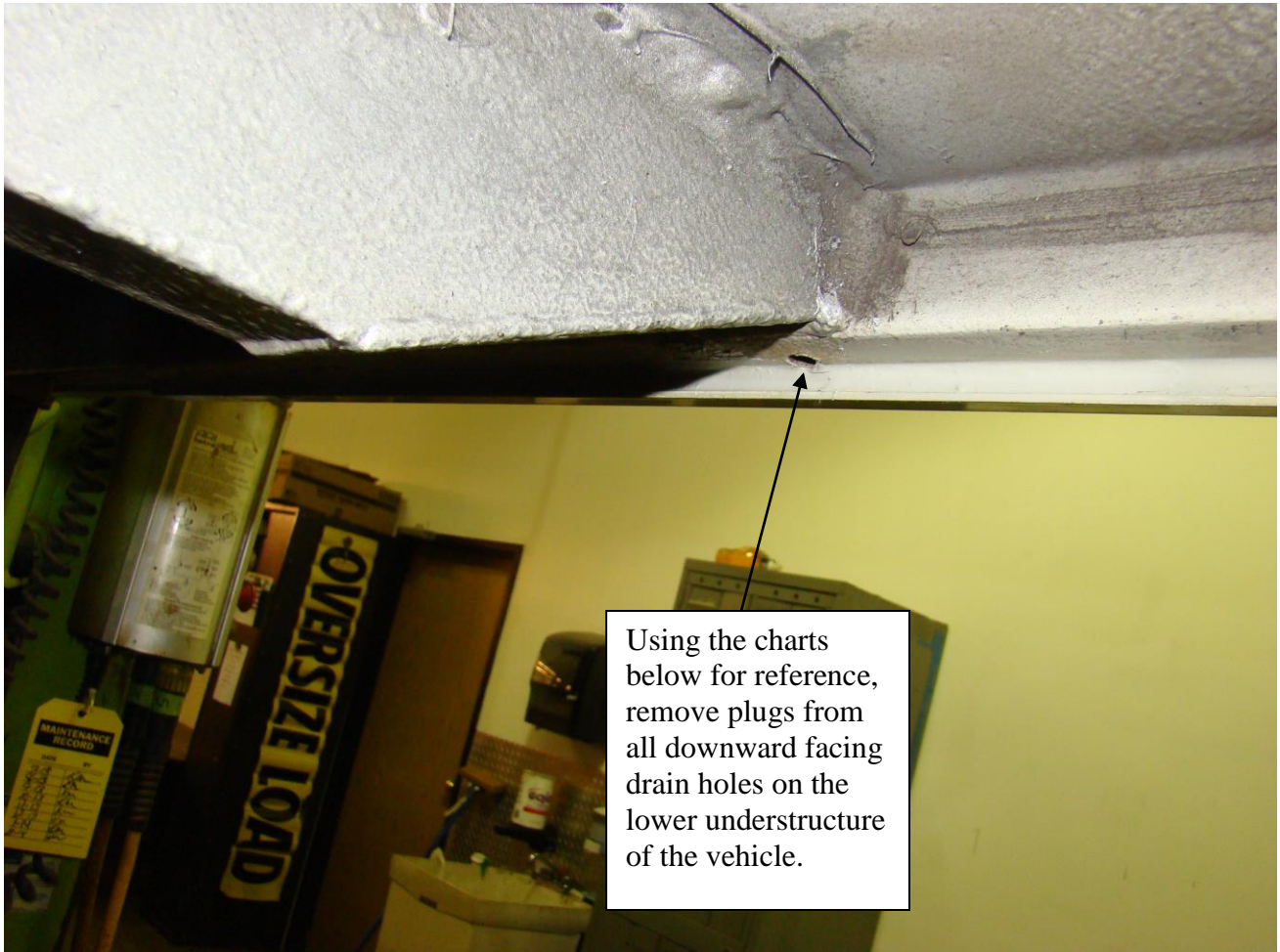
Necessary tools: pliers, cordless drill, 10mm drill bit, pump, airline, Corrosion Inhibitor gun, flex hose attachment w/360 spray nozzle, Corrosion Inhibitor hole plugs, gloves, borescope

NJT: Tube cavity - protection underbody



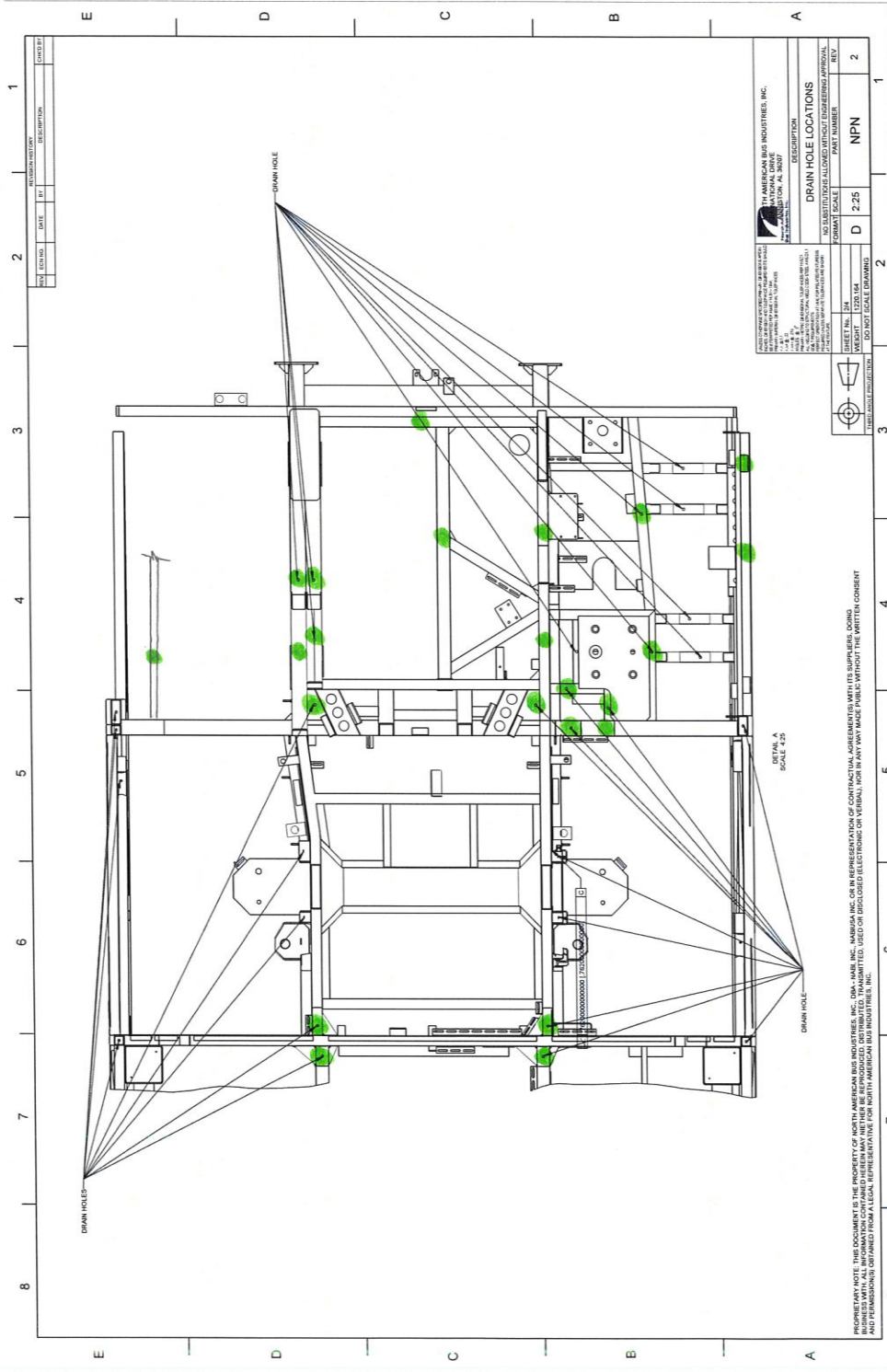
SAFETY PRECAUTIONS MUST BE FOLLOWED ACCORDING TO ACCEPTED INDUSTRY STANDARDS AND LOCAL/PROPERTY REQUIREMENTS.

1. Park the bus and apply the parking brake.
2. Turn off main battery disconnect switch (es).
3. Put bus in the air using all safety precautions for the shop
4. Put plastic and cardboard down on the floor and tape down.
5. Remove plugs from the drain holes using the chart(s) below as a reference.

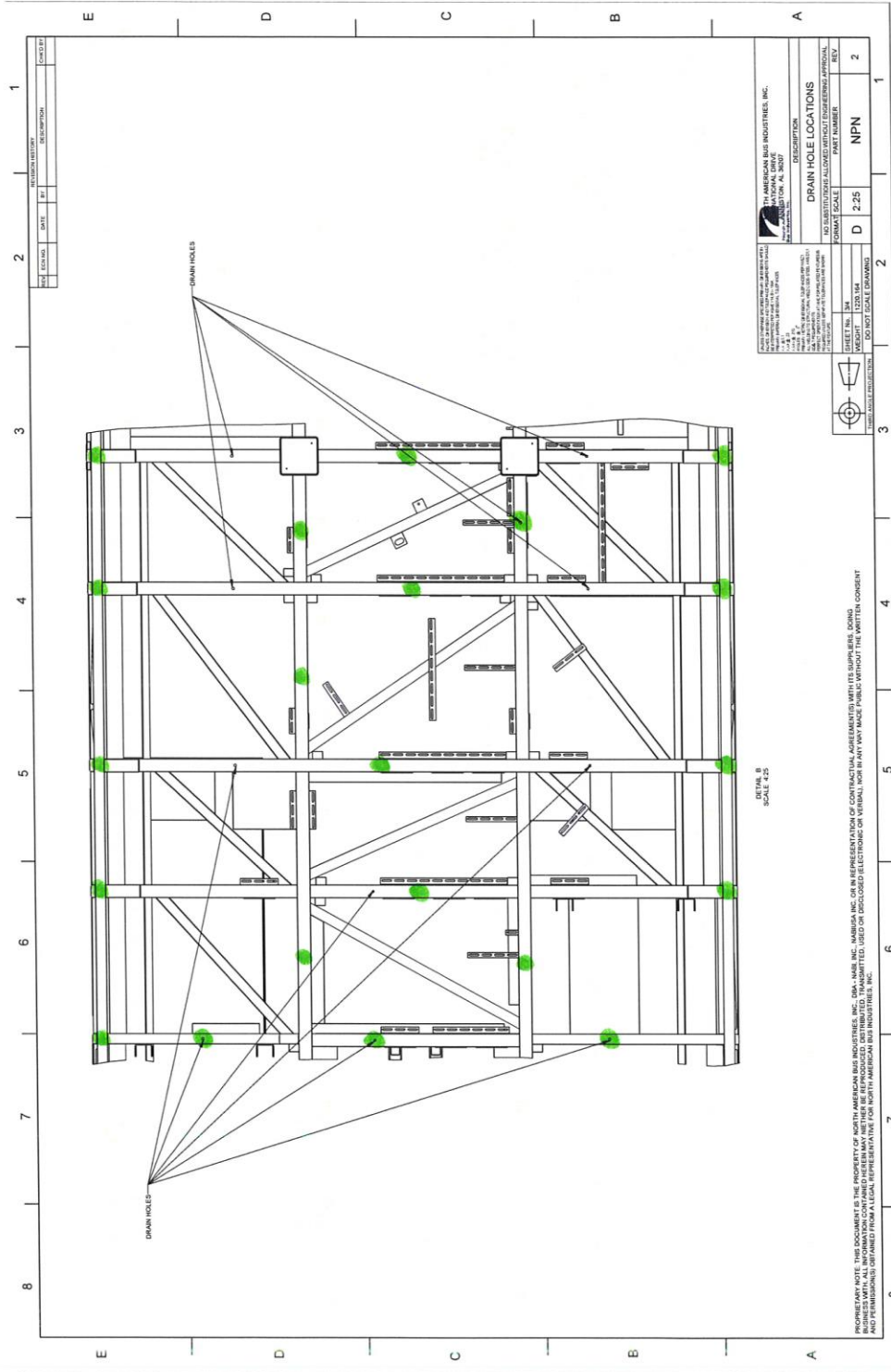


Using the charts below for reference, remove plugs from all downward facing drain holes on the lower understructure of the vehicle.

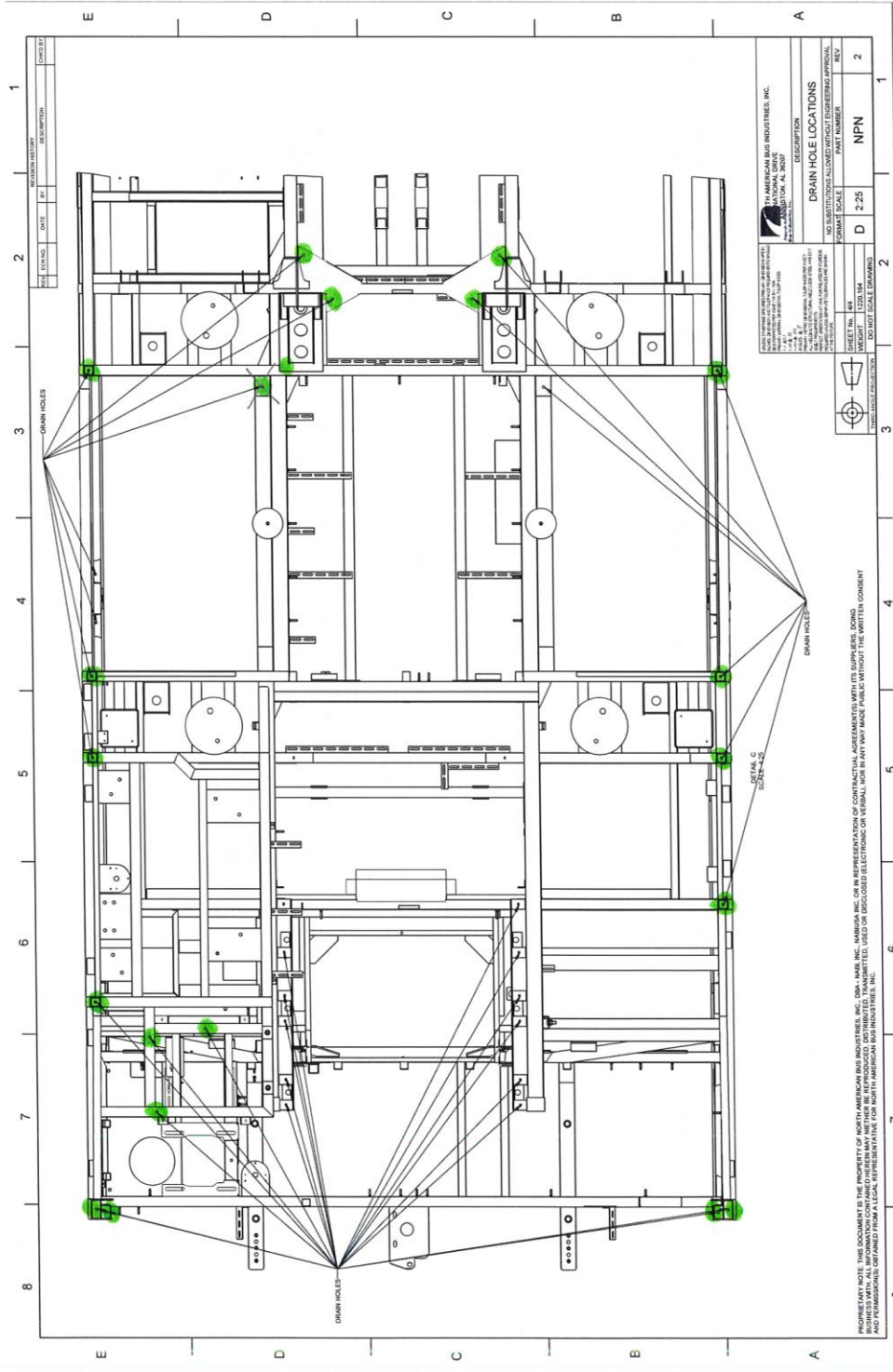
NJT: Tube cavity - protection underbody



NJT: Tube cavity - protection underbody



NJT: Tube cavity - protection underbody



NJT: Tube cavity - protection underbody



6. Take note of any locations where the plug was removed and moisture was present.
7. Put on the correct protective equipment. Check to make sure flex hose and wand attachments are clean and free of debris (see below).



8. Locations that exhibited moisture, LPS2 must be applied. Apply LPS2 by inserting wand into frame plug hole that exhibited moisture. Push wand all the way to the end of the tube and slowly pull back the wand while spraying LPS2. Once back to frame plug hole push wand hose all the way in the other direction. Slowly pull wand hose back while spraying.
9. Allow 1.5 hours for the LPS2 to penetrate the applied surface.
10. Repeat process for all locations that exhibited moisture.
11. After LPS2 is allowed to penetrate for a minimum of 1.5 hours, LPS Procyon must be applied. Follow the instructions below to apply LPS Procyon.
12. Insert wand into the frame plug hole, push wand all the way to one end of the tube. Slowly pull back the wand hose while spraying protective coating. Once back to frame plug hole push wand hose all the way in the other direction. Slowly pull wand hose back while spraying.

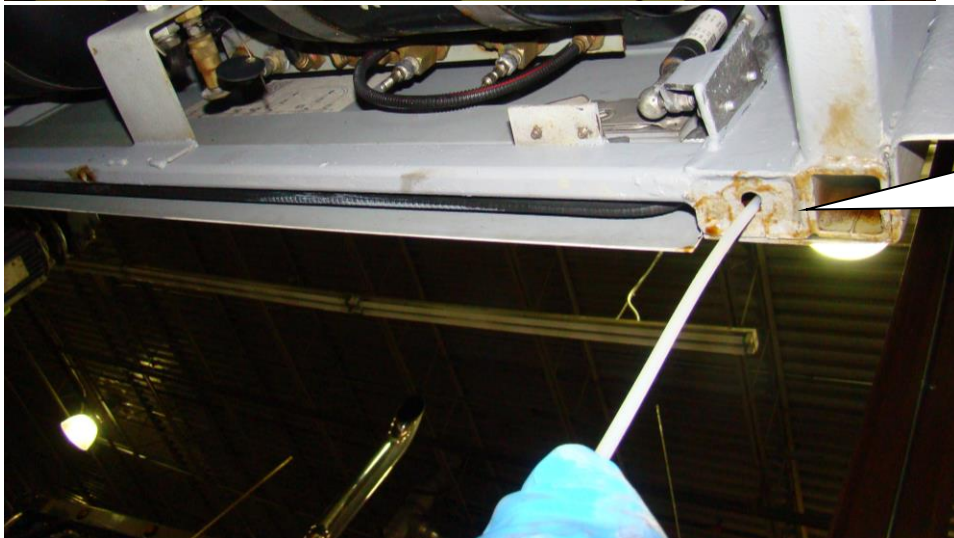
NJT: Tube cavity - protection underbody



13. Repeat process on every frame plug hole throughout the understructure of the bus including 24" up the vertical sidewall locations.



Apply Procyon to every frame hole plug location throughout the understructure of the vehicle.

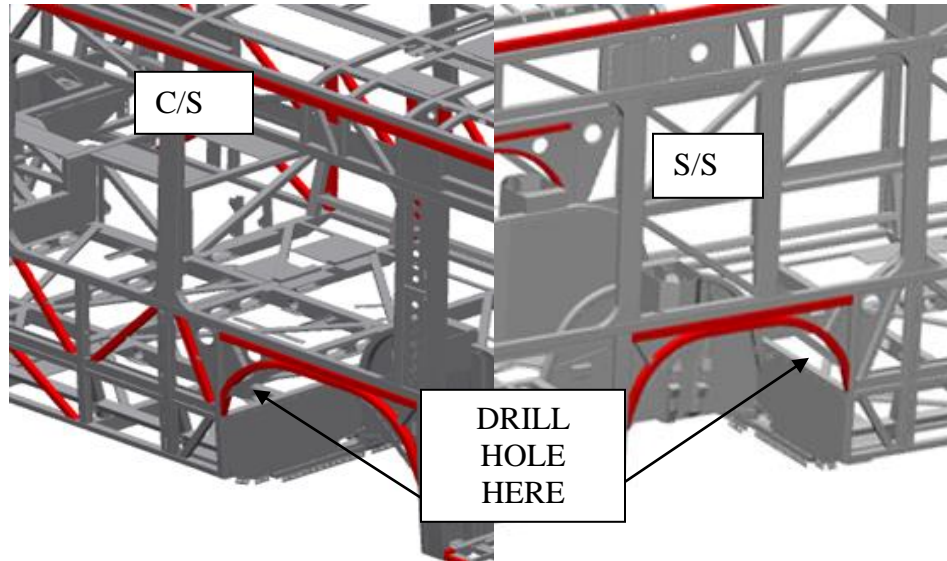


Apply Procyon to every vertical sidewall location throughout the understructure of the vehicle.

NJT: Tube cavity - protection underbody



14. Use borescope to inspect cavities to ensure wax was applied correctly.
15. Drill 10mm hole in the rear of the front c/s and s/s ww as shown. Insert wand into hole drilled and push through tube and slowly pull back while spraying as you go.



16. Clean up any debris caused by performing this retrofit.
17. Check for completeness of work.
18. Remove all tools from working area.
19. Turn the main battery disconnect switch (es) on.